

South Aylesbury Update

Aylesbury Area | July 2022

High Speed Two (HS2) is the new high speed railway for Britain. As we reintroduce face to face engagement, which is in addition to the ongoing virtual engagement, we will continue to follow government guidance on reducing the spread of Covid-19. The health and safety of our workforce and the communities we work within is our priority. We will be keeping our local website www.hs2inbucksandbox.co.uk up to date with information on our works in the local area.

Update on our continuing works

We have put together this update to help inform local residents on the progress being made in the South Aylesbury Area.

This update includes the latest information available on our progress constructing the Princes Risborough to Aylesbury Railway (PRA) bridge, overnight rail deliveries to the PRA site, an aerial view of the PRA site showing the HS2 line of route, details of where in Aylesbury our Mobile Visitor Centre will be visiting next as well as information on the delivery of abnormal loads.

Over the next few months, you can also expect to see the following works taking place in the local area:

- Overnight deliveries of aggregate via rail on the Princes Risborough – Aylesbury (PRA) line continuing into Autumn 2022;
- Access track for work on utilities diversion works;
- Utility diversions along the PRA line continuing into Autumn 2022;
- Concrete works for the PRA bridge ;
- PRA underpass commencing with excavation early July 2022, and concrete works following after;
- Earthworks for the realignment of the PRA line embankment commencing July 2022;
- Abnormal load deliveries of steel for the bridge (via A418) and installation for PRA bridge starting in late August and into Autumn 2022, including some night deliveries and night rail working; and
- Bridge deck works for the PRA bridge following the steel work this Autumn 2022.



Join us ...

Come and find out more about works in your area on our new mobile visitor centre!

We will be visiting the Hawkslade Estate on the **21st of July**, more information can be found on page 5.

Please contact the HS2 Helpdesk or visit hs2.org.uk/events for more information on events in your area.

www.hs2.org.uk/events

Works update

The PRA bridge is part of the realignment of the existing Network Rail line, which is being constructed to allow the new HS2 line to run underneath. The bridge is expected to become operational in 2023.

Our work in this area includes constructing a new railway embankment, the bridge itself, and other related structures including a road underpass which will support future development in the area. These works will involve receiving deliveries of large steel beams and will require some temporary traffic management on the A418.

The PRA realignment is due to be brought into use next year after a 'blockade' period where the line is stopped and a short period of 24hr working takes place which allows the live railway to switch from the existing line onto the new.

We have already been carrying out piling works for the bridge, which are now ready for the next stage of construction. These included some of the largest piles constructed for the HS2 railway. Each of these required approximately 300 cubic metres of concrete and took 2-3 days of continuous working to construct. The bridge will rest on these concrete piles, some as deep as 57.5m. You can see our team installing the first of the four pier piles in the image to the right, Figure 2.

Currently the team are excavating the road underpass, creating an access track and the bridge construction will continue into Autumn 2022.

Coming up in the next few months, utility diversion works will commence on either side of the PRA line. These works will take place during our daytime hours 8am to 6pm. Small chambers alongside the railway line will be created and a pipe will be driven by auger bore under the existing line. This work will continue into Winter 2022.

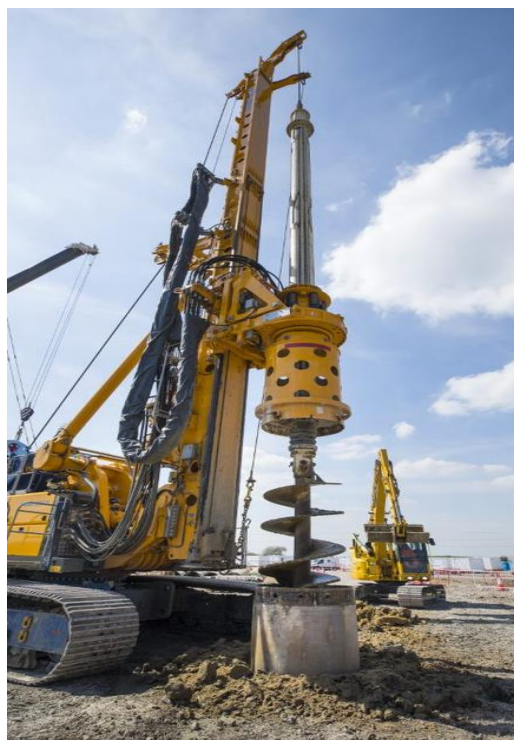


Figure 1: The above image shows our teams carrying out piling works for the Princes to Aylesbury Railway bridge, April 2022.



Figure 2: The above image shows our teams installing the first of four piers for the PRA bridge.

Overnight rail deliveries

Since January 2022, we have been carrying out overnight rail deliveries of material to our PRA site. These deliveries are expected to come to an end in September 2022 so that we can begin work on the railway embankment. The overnight rail deliveries have been providing material for the railway embankment, our internal access roads and other works close by. Delivering material by rail has successfully helped reduce our impact on the local road network.

Across the whole HS2 project, 15,000 freight trains are set to be used to haul 10 million tonnes of aggregate to construction sites – taking the equivalent of 1.5 million HGVs off the UK's roads.

Most evenings, one train pulls into our railhead platform, and aggregate is offloaded by several large machines such as Articulated Dump Trucks (ADTs). This material is stored and then either used locally or transported along our site access road.

The railway line has regular commuter trains in the daytime. Therefore, we have been conducting our deliveries overnight, so that we don't disrupt the daytime services.

Community impacts

We understand the offloading of material can be noisy and we are doing all we can to minimise disturbance overnight. We have several noise monitors close to local residential receptors and data is monitored weekly.

Monitoring noise levels and listening to community feedback have allowed us to put in place the following measures to minimise noise impacts:

- ☒ **Reduced speed limits** on the construction access road
- ☒ **No metal-on-metal** means leaving a layer of gravel in the bottom of wagons to reduce metal banging noises as material is removed
- ☒ **Acoustic barriers** have been installed close to the Hawkslade estate.
- ☒ **Stockpiling of materials** on the northern part of the railhead helps the reduction of noise traveling to residential areas.



Figure 3: The image presented to the left, shows the aggregate that is unloaded at the PRA site. This aggregate will be used in the construction of many aspects of HS2; such as the construction of the new railway embankment as well as our internal road network.

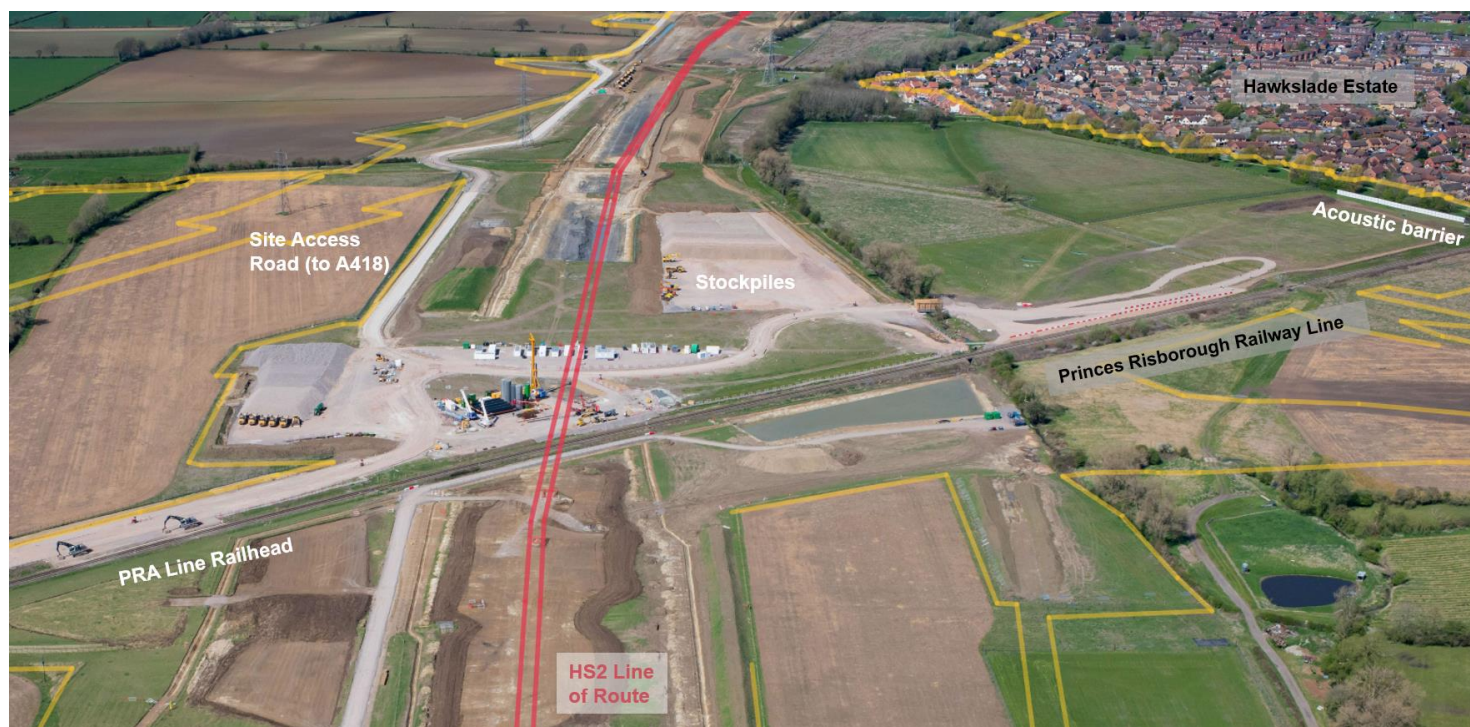


Figure 4: The above aerial image shows our progress along the Princes Risborough to Aylesbury railway line.

The above image is a North point of view and shows many features of our PRA works site.

- The site access road forms part of our internal road network connecting construction sites along EKFB's 80km section of HS2.
- The PRA Line Railhead platform receives overnight deliveries of aggregate. This aggregate is then stored in stockpiles.
- The acoustic barrier was installed to help mitigate noise that occurs during our overnight rail deliveries; helping to further reduce our impact on local residents.
- The yellow lines highlight the HS2 Act Boundary. This is the area that we have permission to conduct our works for the HS2 project.

January – June 2022

**Over 90 trains have delivered
200,000+ tonnes of aggregate to the Aylesbury Railhead**



taking over 20,000 HGVs off the local road network.



Mobile Visitor Centre Drop-In in Hawkslade



Figure 5: The image above is of our mobile visitor centre which was officially launched in March 2022.

Come and talk to us on
Thursday 21 July 2022,
between **10:00am to 15:00pm**

Hawkslade Community
Centre, Orwell Drive,
Hawkslade Farm, Aylesbury,
HP21 9JL



Abnormal loads

Throughout 2022, we have been receiving deliveries of abnormal loads to our sites in Aylesbury. An abnormal load is a load which due to its weight or dimensions requires a special vehicle and arrangements for its transport. These deliveries often include very large construction machinery such as cranes and piling rigs and deliveries of structural elements.

For the safety of road users and our staff, sometimes these abnormal loads require temporary traffic management in the form of a lane closure to provide space for the vehicles to safely turn into our construction sites. We thank you for your co-operation and apologise in advance for any inconvenience.



Figure 6: The above image is an example of an abnormal load of steel girders being delivered to an HS2 site.

Keeping you informed

We are committed to keeping you informed about work on HS2. This includes ensuring you know what to expect and when to expect it, as well as how we can help.

Residents' Charter and Commissioner

The Residents' Charter is our promise to communicate as clearly as we possibly can with people who live along or near the HS2 route.

We also have an independent Residents' Commissioner whose job is to make sure we keep to the promises we make in the Charter and to keep it under constant review. Find reports at:

www.gov.uk/government/collections/hs2-ltd-residents-commissioner

You can contact the Commissioner at:
residentscommissioner@hs2.org.uk

Construction Commissioner

The Construction Commissioner's role is to mediate and monitor the way in which HS2 Ltd manages and responds to construction complaints. You can contact the Construction Commissioner by emailing:
complaints@hs2-cc.org.uk

Property and compensation

You can find out all about HS2 and properties along the line of route by visiting:

www.gov.uk/government/collections/hs2-property

Find out if you're eligible for compensation at:

www.gov.uk/claim-compensation-if-affected-by-hs2

Holding us to account

If you are unhappy for any reason, you can make a complaint by contacting our HS2 Helpdesk team. For more details on our complaints process, please visit our website:

www.hs2.org.uk/how-to-complain

Contact Us

Contact our HS2 Helpdesk team all day, every day of the year on:

 Freephone **08081 434 434**

 Minicom **08081 456 472**

@ Email **HS2enquiries@hs2.org.uk**

Write to:

FREEPOST

HS2 Community Engagement

Website **www.hs2.org.uk**

To keep up to date with what is happening in your local area, visit:
www.HS2inyourarea.co.uk

Please contact us if you'd like a free copy of this document in large print, Braille, audio or easy read. You can also contact us for help and information in a different language.

HS2 Ltd is committed to protecting personal information. If you wish to know more about how we use your personal information please see our Privacy Notice

Reference number: HS2-MW-EK-Ph1-Ar-Ce-C1-Prog-works-10-19/07/2022

High Speed Two (HS2) Limited, registered in England and Wales.

Registered office: Two Snowhill, Snow Hill Queensway, Birmingham B4 6GA.

Company registration number: 06791686. VAT registration number: 888 8512 56