

Notice of Public Rights of Way closures, Aylesbury

October 2022 | www.hs2.org.uk

High Speed Two (HS2) is the new high speed railway for Britain. We are following Government and Public Health England (PHE) advice on working safely during the pandemic. The health and safety of our workforce and the communities we work within is our priority. If you have any questions about this, please contact our Helpdesk to find out more. All sites will remain under constant review. You can sign up for regular updates in your local area at www.hs2inbucksandbox.co.uk.

What are we doing?

As part of our preparatory works and for the safety of the public, we have closed some footpaths in the Aylesbury area. This includes the areas located South and West of Aylesbury, Fleet Marston, Stoke Mandeville and Waddesdon.

Public Right of Way closures are in place to allow us to safely construct our internal haul road alongside our bridge and viaduct structures as well as the HS2 line itself. Footpaths are located close to or that cross the construction sites, must be closed and diverted.

We are committed to keeping the local path known as The Greenway open at all times, between Waddesdon and Aylesbury. In order to maintain access to The Greenway we may be required to undertake works that are in close proximity to the path. For the protection of the public, we may need to narrow the path in order to carry out these works.

When will these works take place?

Many Public Rights of Ways in the areas of Aylesbury, Stoke Mandeville, Fleet Marston and Waddesdon were closed in 2021.

The affected footpaths will have closure notices and, where possible, signposted local diversions in place around the construction works until the permanent realignments are completed in 2024.

Please look at the following pages for the maps indicating which footpaths are affected.

Notification



Duration of works

Closures commenced in October 2021 and will continue until late 2024.

Normal working hours:

Monday to Friday
8.00am – 6.00pm

Weekend working hours:

Saturday and Sunday
8.00am – 6.00pm

Our contractors may be on site for one hour's start-up and shutdown either side of these times.

What to expect

Varied activities with both quiet and busier periods. Localised footpath closures and diversions will be in place.

What we will do

Manage any environmental impacts, such as traffic and noise.

Respond promptly to any complaints and take appropriate action.

Take care to respect the community.

Notice of Public Rights of Way closures, Aylesbury

Notification



Where will the works take place?

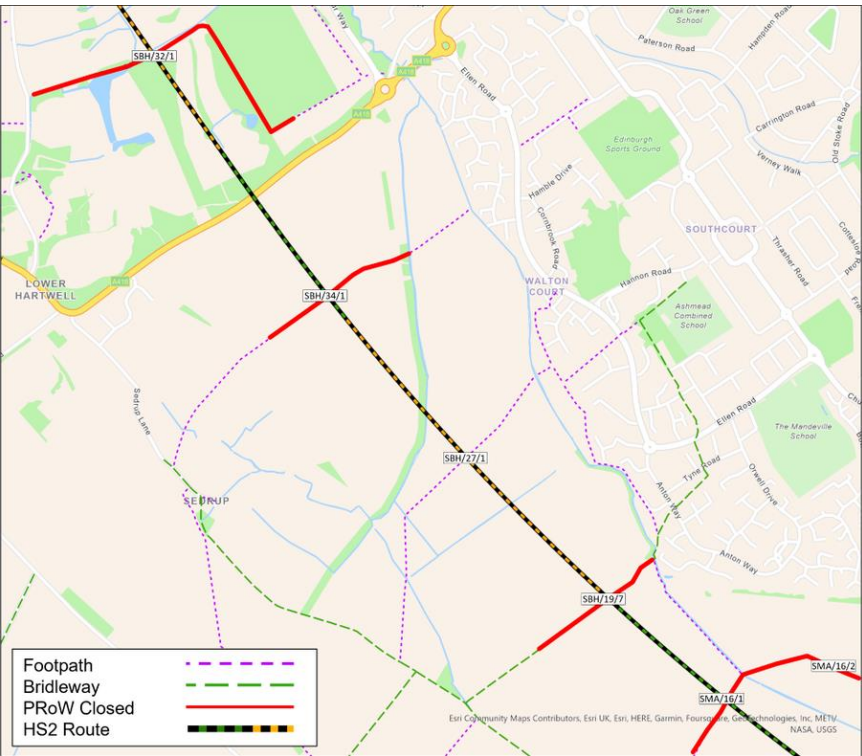
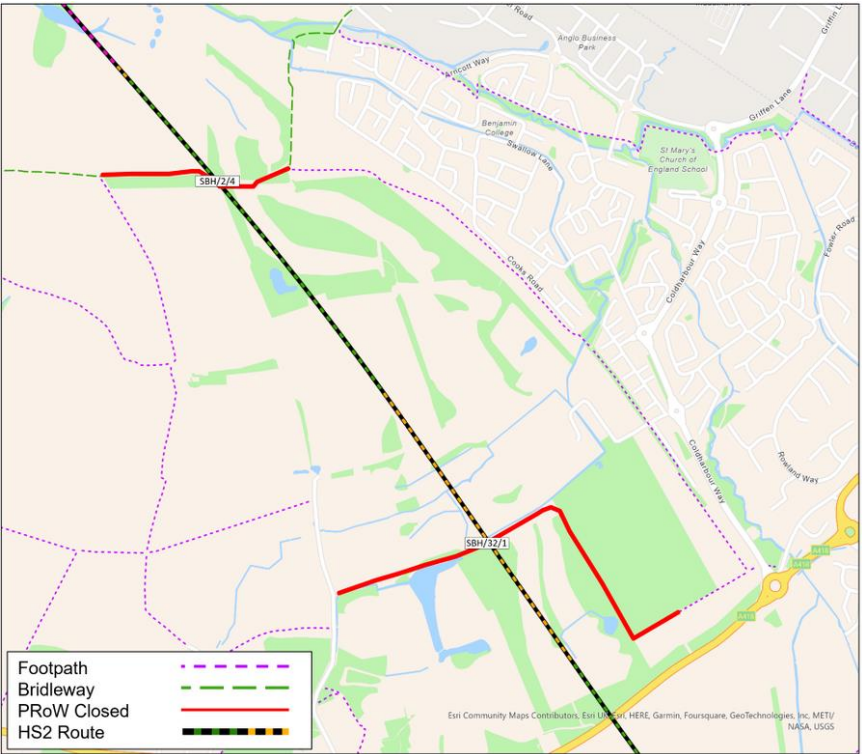
West Aylesbury

The footpaths closed in the area west of Aylesbury near Hartwell are **SBH/32/1** and **SBH/2/4**. Our team have looked at a number of ways in which diversions could be introduced however in this area, due to the programme of works and locations it has not been possible.

South West Aylesbury

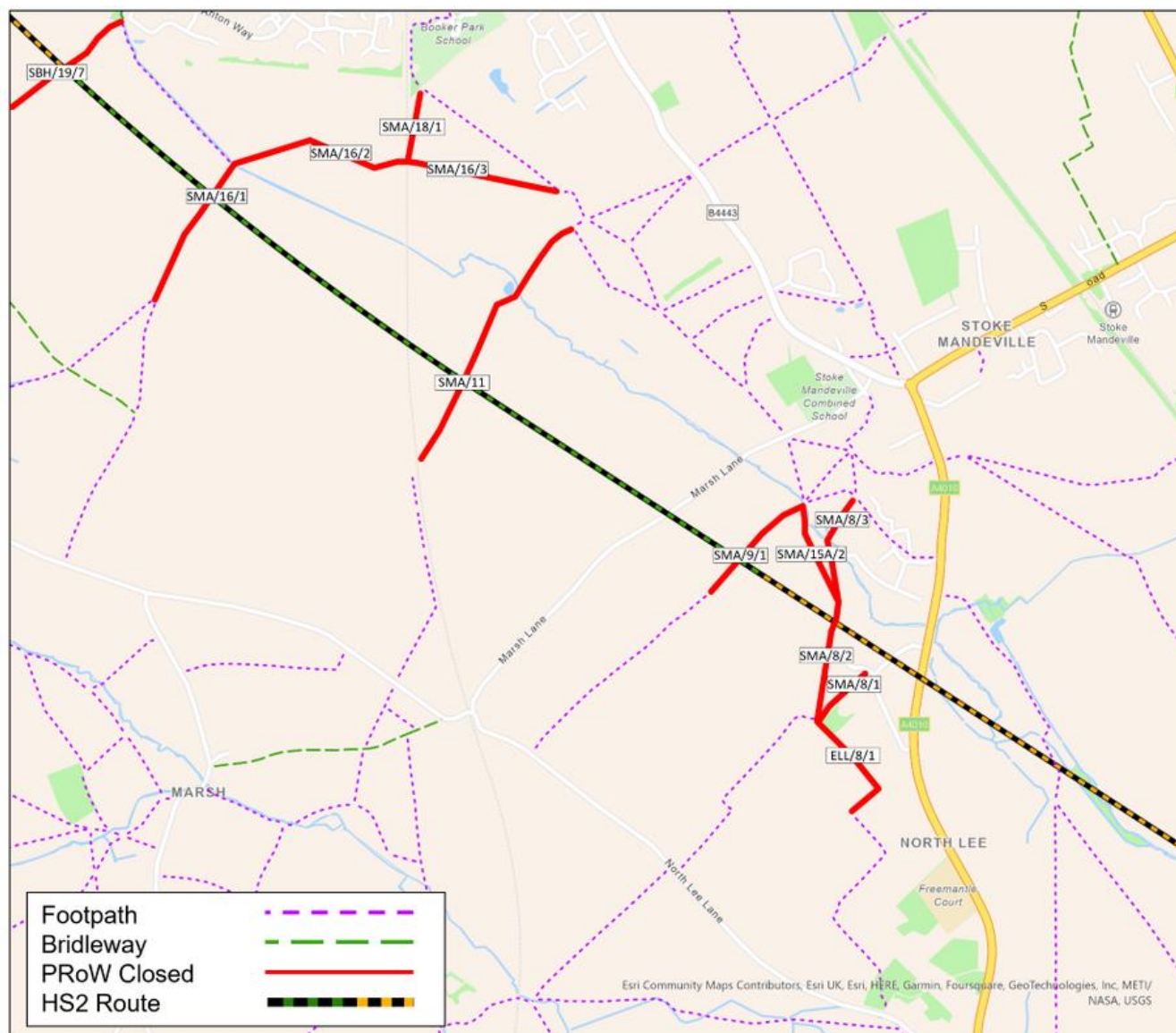
The footpath identified as **SBH/27/1**, will remain open providing connectivity between Sedrup and Walton Court.

The footpaths that are closed in the area south east of the A418 Bicester Road are; **SBH/34/1**, **SBH/19**, **SMA/17A/1**, **SMA/16/2**, **SMA16/1** and **SMA/11**. These footpaths will be closed until late 2024.



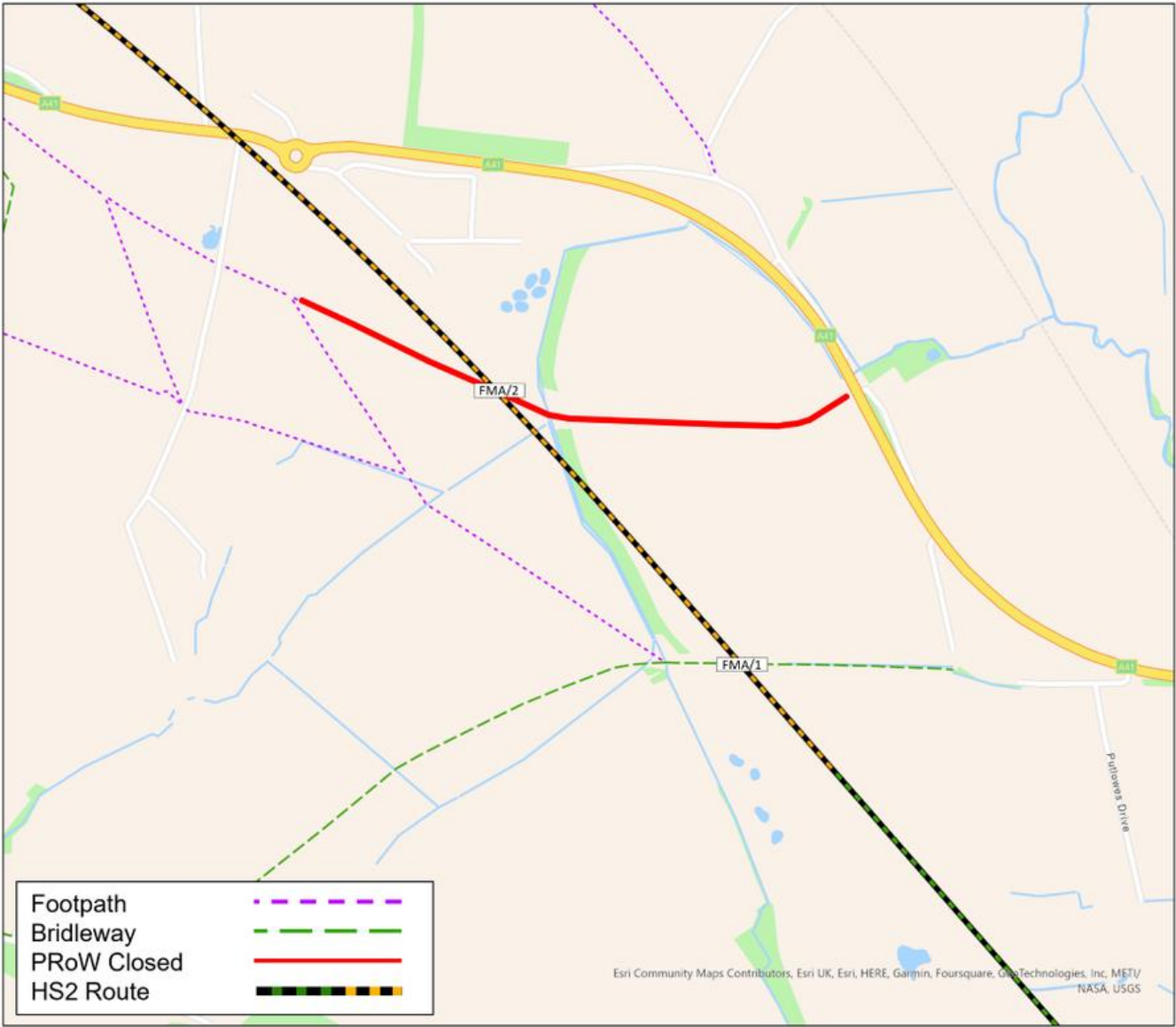
Stoke Mandeville

Footpaths that are closed in the Stoke Mandeville area are; **SMA/16/1, SMA/16/2, SMA/16/3, SMA/18/1, SMA/11, SMA/9/1, SMA/15A/2, SMA/15/2, SMA/8/2, SMA/8/1, SMA/8/3 and ELL/8/1**. These footpaths will remain closed until late 2024.



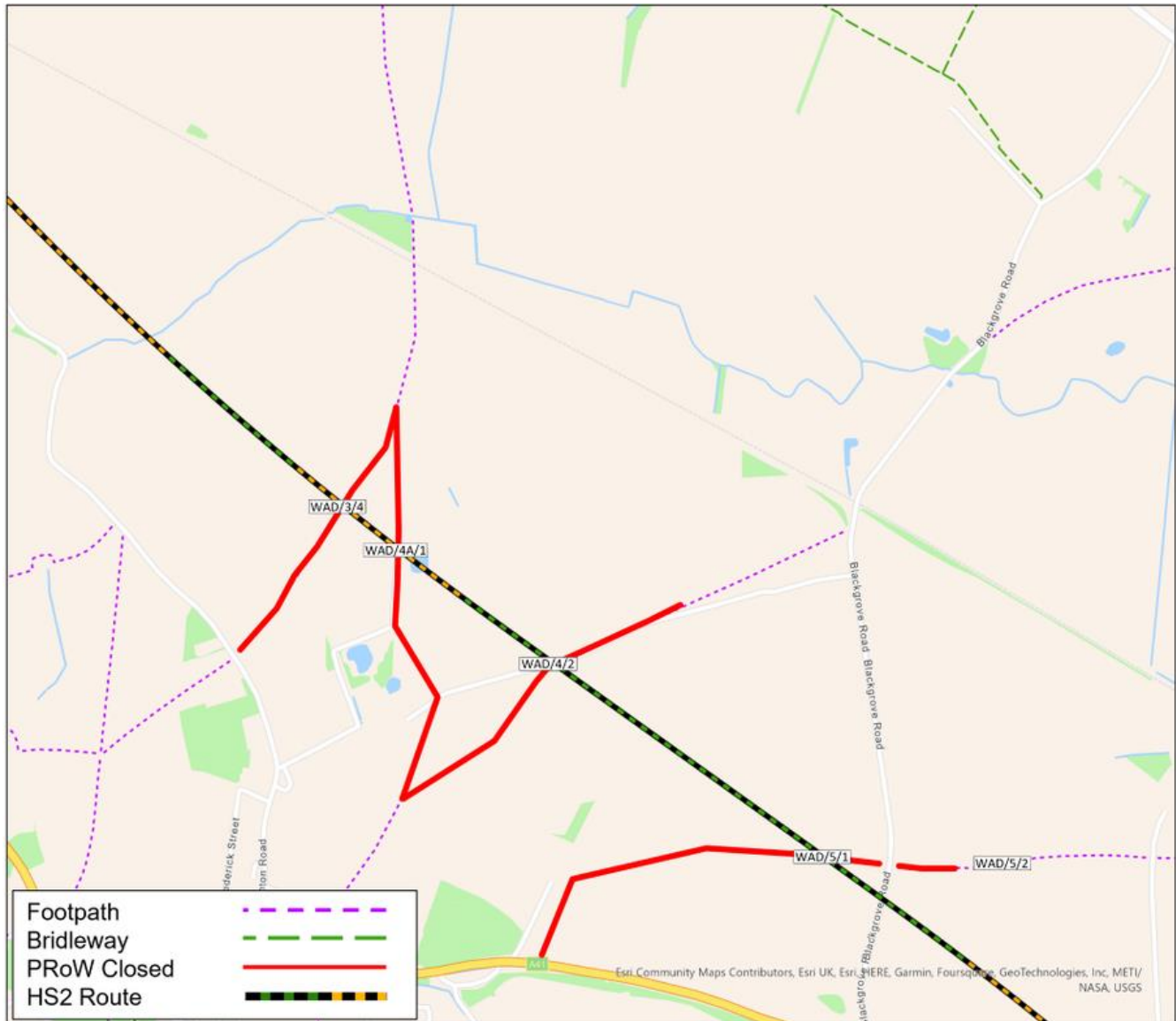
Fleet Marston

In the Fleet Marston area footpath FMA/2 is closed until late 2024. The map below shows the exact location and the extent of the closure. The footpath known as FMA/1 (The Greenway) will remain open at all times and is the diversion route for FMA/2 as shown on the map below.



Waddesdon

The closure of footpath **WAD/3/5** occurred in early July 2022. Footpaths that continue to be closed in the Waddesdon area are **WAD/5/1**, **WAD/4/2**, **WAD/4A/1**, **WAD/3/4**. These footpaths will remain closed until late 2024.



What else is happening in your area?

www.hs2.org.uk

Contact our HS2 Helpdesk team

Our team is here to listen and respond to your enquiry, complaint or feedback to help us be a good neighbour.

You can contact our Helpdesk team all day, every day of the year on:

Freephone: **08081 434 434**

Minicom: **08081 456 472**

Email: hs2enquiries@hs2.org.uk

Keep up-to-date with your local community website

To find out more about what's happening in your area and receive regular email updates, you can sign up to our local community websites at: www.hs2inyourarea.co.uk.

About our Community and Business Funds

We are offering two funds that are available to local communities and businesses between the West Midlands and London, to help with the disruption caused by our construction work. These are the Community and Environment Fund (CEF) and the Business and Local Economy Fund (BLEF).

The CEF is designed to give communities the opportunity to share in the benefits of HS2. It is an allocated fund that communities are able to apply for, to help to support local projects that aim to improve their local area.

The BLEF is designed to support local economies that may be disrupted by the construction of HS2. BLEF grants are for local business support organisations and local authorities to help maintain business activity in local communities.

For more information about each of these funds, including how to apply, please visit: <https://www.groundwork.org.uk/hs2funds>



Keeping you informed

We are committed to keeping you informed about work on HS2. This includes ensuring you know what to expect and when to expect it, as well as how we can help.

Residents' Charter and Commissioner

The Residents' Charter is our promise to communicate as clearly as we possibly can with people who live along or near the HS2 route.
www.gov.uk/government/publications/hs2-residents-charter

We also have an independent Residents' Commissioner whose job is to make sure we keep to the promises we make in the Charter and to keep it under constant review. Find reports at:
www.gov.uk/government/collections/hs2-ltd-residents-commissioner

You can contact the Commissioner at:
residentscommissioner@hs2.org.uk

Construction Commissioner

The Construction Commissioner's role is to mediate and monitor the way in which HS2 Ltd manages and responds to construction complaints. You can contact the Construction Commissioner by emailing:
complaints@hs2-cc.org.uk

Property and compensation

You can find out all about HS2 and properties along the line of route by visiting:
www.gov.uk/government/collections/hs2-property
Find out if you're eligible for compensation at:
www.gov.uk/claim-compensation-if-affected-by-hs2

Holding us to account

If you are unhappy for any reason you can make a complaint by contacting our HS2 Helpdesk team. For more details on our complaints process, please visit our website:
www.hs2.org.uk/how-to-complain

Contact Us

Contact our HS2 Helpdesk team all day, every day of the year on:

 Freephone **08081 434 434**

 Minicom **08081 456 472**

 Email **hs2enquiries@hs2.org.uk**

Write to:

FREEPOST

HS2 Community Engagement

Website **www.hs2.org.uk**

To keep up to date with what is happening in your local area, visit:
www.hs2inyourarea.co.uk

Please contact us if you'd like a free copy of this document in large print, Braille, audio or easy read. You can also contact us for help and information in a different language.

HS2 Ltd is committed to protecting personal information. If you wish to know more about how we use your personal information please see our Privacy Notice
<https://www.gov.uk/government/publications/high-speed-two-ltd-privacy-notice>

Reference number: HS2-EW-EK-Ph1-Ar-Ce-C2-Prog-works-45-19/07/2022

High Speed Two (HS2) Limited, registered in England and Wales.

Registered office: Two Snowhill, Snow Hill Queensway, Birmingham B4 6GA.

Company registration number: 06791686. VAT registration number: 888 8512 56.