



Working on  
behalf of

# HS2

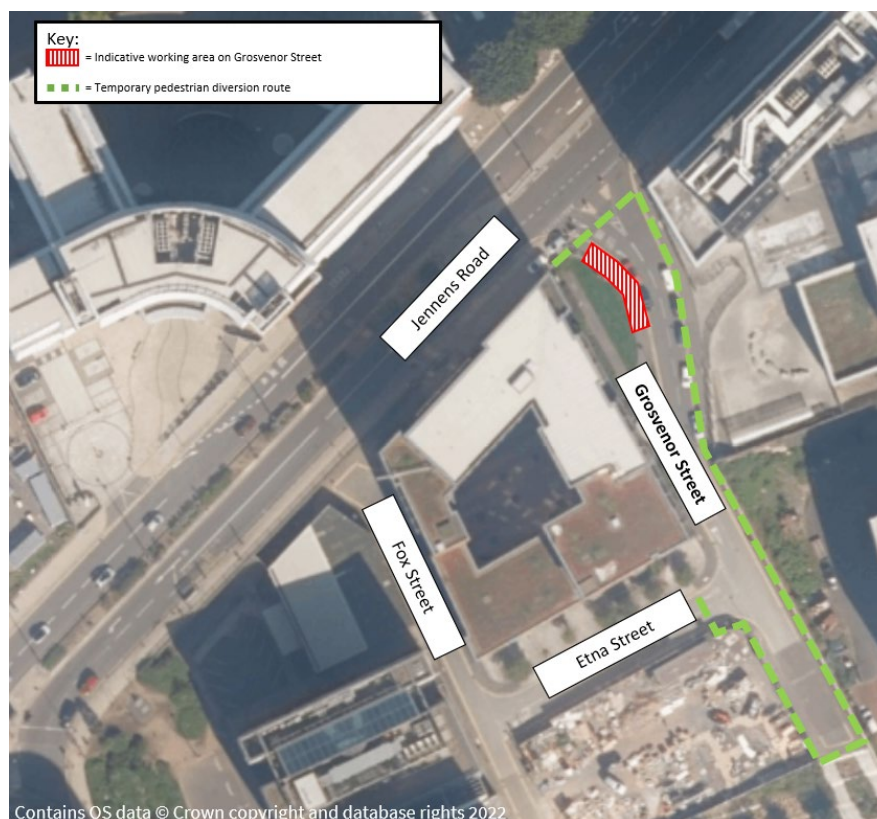
## Notice of utility works on Grosvenor Street

June 2022 | [www.hs2.org.uk](http://www.hs2.org.uk)

High Speed Two (HS2) is the new high speed railway for Britain. Early works for HS2 are carried out by a joint venture between Laing O'Rourke and Murphy & Sons known as LM.

### Utility works on Grosvenor Street

As we continue to carry out utility diversions in preparation for the construction of HS2's Curzon Street Station and the railway, we'll be carrying out works on **Grosvenor Street**. To carry out the utility works safely, we need to manage pedestrians in the local area, this will include temporary closure of a footpath and pedestrian management.



**If you have a question about HS2 or our works, please contact our HS2 Helpdesk team on 08081 434 434 or email [hs2enquiries@hs2.org.uk](mailto:hs2enquiries@hs2.org.uk)**

### Notification



#### Duration of works

Wednesday 6<sup>th</sup> July for approximately 2 weeks

#### What to expect

Temporary closure of footpath on **Grosvenor Street**

Pedestrian management measures will be in place as we carry out the works.

Core working hours are 8am to 6pm, although staff may be on site up to an hour before and an hour after those times.

#### What we will do

Clearly signpost the footpath closure and pedestrian management

Keep disruption to a minimum.

Answer your questions via the 24/7 HS2 helpdesk.

We'll keep you informed of any adjustments via [www.hs2inbirmingham.co.uk](http://www.hs2inbirmingham.co.uk)

Call our HS2 Helpdesk team on **08081 434 434**

# Keeping you informed

We are committed to keeping you informed about work on HS2. This includes ensuring you know what to expect and when to expect it, as well as how we can help.

## Residents' Charter and Commissioner

The Residents' Charter is our promise to communicate as clearly as we possibly can with people who live along or near the HS2 route.  
[www.gov.uk/government/publications/hs2-residents-charter](http://www.gov.uk/government/publications/hs2-residents-charter)

We also have an independent Residents' Commissioner whose job is to make sure we keep to the promises we make in the Charter and to keep it under constant review. Find reports at:  
[www.gov.uk/government/collections/hs2-ltd-residents-commissioner](http://www.gov.uk/government/collections/hs2-ltd-residents-commissioner)

You can contact the Commissioner at:  
[residentscommissioner@hs2.org.uk](mailto:residentscommissioner@hs2.org.uk)

## Construction Commissioner

The Construction Commissioner's role is to mediate and monitor the way in which HS2 Ltd manages and responds to construction complaints. You can contact the Construction Commissioner by emailing:  
[complaints@hs2-cc.org.uk](mailto:complaints@hs2-cc.org.uk)

## Property and compensation

You can find out all about HS2 and properties along the line of route by visiting:  
[www.gov.uk/government/collections/hs2-property](http://www.gov.uk/government/collections/hs2-property)  
Find out if you're eligible for compensation at:  
[www.gov.uk/claim-compensation-if-affected-by-hs2](http://www.gov.uk/claim-compensation-if-affected-by-hs2)

## Holding us to account

If you are unhappy for any reason you can make a complaint by contacting our HS2 Helpdesk team. For more details on our complaints process, please visit our website:  
[www.hs2.org.uk/how-to-complain](http://www.hs2.org.uk/how-to-complain)

## Contact Us

Contact our HS2 Helpdesk team all day, every day of the year on:

 Freephone **08081 434 434**

 Minicom **08081 456 472**

 Email **[hs2enquiries@hs2.org.uk](mailto:hs2enquiries@hs2.org.uk)**

Write to:

**FREEPOST**

**HS2 Community Engagement**

Website **[www.hs2.org.uk](http://www.hs2.org.uk)**

To keep up to date with what is happening in your local area, visit:  
**[www.hs2inyourarea.co.uk](http://www.hs2inyourarea.co.uk)**

**Please contact us if you'd like a free copy of this document in large print, Braille, audio or easy read. You can also contact us for help and information in a different language.**

HS2 Ltd is committed to protecting personal information. If you wish to know more about how we use your personal information please see our Privacy Notice  
<https://www.gov.uk/government/publications/high-speed-two-ltd-privacy-notice>

**Reference number: HS2-EW-LM-Ph1-Bir-Cur-St-N4-UT-50-07/05/2022**

High Speed Two (HS2) Limited, registered in England and Wales.  
Registered office: Two Snowhill, Snow Hill Queensway, Birmingham B4 6GA.  
Company registration number: 06791686. VAT registration number: 181 4312 30.