

## Washwood Heath Depot and Network Integrated Control Centre

Design Update Brochure  
June 2022



## Content

Background	4
Depot History and Context	5
Washwood Heath Depot and Network Integrated Control Centre Plan in Context	8
Design Elements	10
Further Development	18
Sustainability and the Environment	20
Skills, Employment and Education	22
Keeping You Informed	24

# Background

## What is High Speed Two (HS2)?

High Speed Two (HS2) is the new high-speed railway critical for the UK's low carbon transport future. It will provide much needed rail capacity across the country and help to re-balance the UK economy.

It is being built from London to the North-West, with HS2 trains linking the biggest cities in Scotland with Manchester, Birmingham and London. The construction of the new railway is split into three phases:

Phase One linking London and the West Midlands;

Phase 2a linking the West Midlands and the North via Crewe; and

Phase 2b completing the railway to Manchester, the East Midlands and the North.

## About Washwood Heath Depot

To operate HS2 passenger trains (rolling stock) safely and efficiently, it is necessary to provide facilities where the trains can be maintained, serviced, and stored (stabled) when not in use. Key facilities/buildings within the site include:

- Maintenance Building
- Network Integrated Control Centre
- Cleaners & Drivers Building

We have created designs for the depot building and the surrounding landscape and infrastructure.

We have put this brochure together to give you an idea of what the design of the Washwood Heath Depot and Control Centre could look like when it is finished.

All the images used are part of an ongoing design process which will be refined and developed over the coming months, taking account of your feedback wherever possible. Elements of the final building design, such as the cladding, colour and use of materials, may differ from the images used in this brochure.

This brochure focuses on the Depot and Control Centre itself and doesn't include the emerging plans for the area to the south, called the Southern Development Land. We are working closely with Birmingham City Council and other key stakeholders to achieve the aspirations for that area which will be subject to a separate planning application later on.

Later this year we will submit a request for approval for the design and construction of the depot. We will be inviting the local community to information events on our developing design and our plans for the buildings and their surroundings.

# Depot History and Context

## History of the site

Washwood Heath is a ward within the formal district of Hodge Hill; two miles northeast of Birmingham City Centre. The area is entirely urban, with land use comprising of light industrial and commercial infrastructure throughout Washwood Heath, Nechells and Saltley.

Since HS2 received Royal Assent in 2017, we have been working in this location to prepare for the delivery of the railway.

## Work on site to date

Demolition of buildings on the site has been completed and the site is being prepared for the construction of the new Depot and Control Centre.



Materials being delivered at the Washwood Heath Depot site

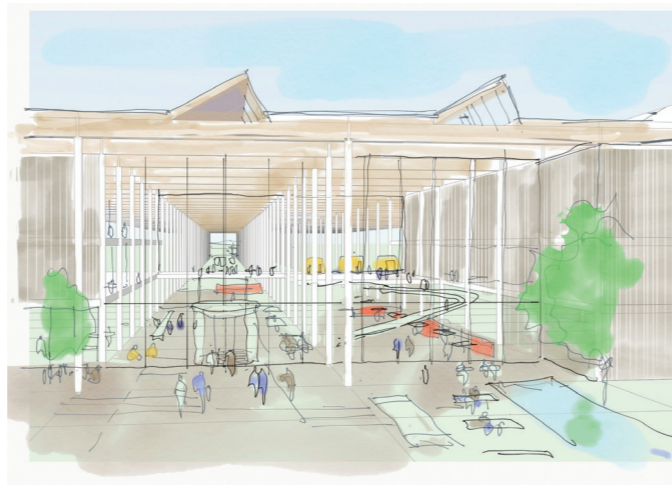
## Architectural Design

The Washwood Heath Depot site and surrounding environment has been designed to celebrate the area's historic background, which has been part of its story for the last 600 years.

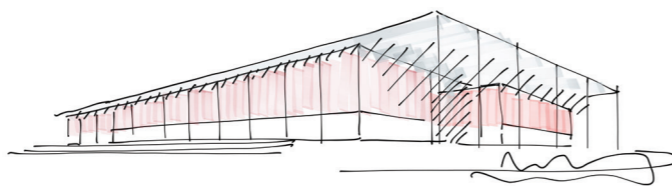
Within the Depot, there are a number of buildings proposed which contain; building services, control systems and specialist equipment required for the operation of the depot.

The buildings inside the depot site have been developed around the core themes of:

- Celebrating engineering- where the depot design is visible for all to see
- A joy to work in- a unique experience in each of the buildings
- Lean- both the depot design and surrounding landscape will be multipurpose



Maintenance Building concept drawing



Maintenance Building concept drawing

The operational buildings will be built using lightweight materials, that are durable and long lasting.

All buildings will ensure the use of sustainable materials for construction and renewable energy.

The concept design has been produced and this is your opportunity to:

- Share your views on the proposed depot vision and future ambition
- Get more information on the next stages in the design process and planning submission
- Get information on how to remain involved.

## Landscape Design

The landscape design focuses on restoring lost habitats through biodiversity and wider habitat connections.

The strategy also includes outdoor social spaces for staff who are working at the depot.

Landscaping plays a key role in the design of the depot site, with each building having a specifically designed landscape style.

## Keeping People Safe

In addition to the landscape design, the site and areas within it will be enclosed by perimeter fencing, supported by additional measures such as video surveillance and a site security team.

These measures help provide a safe environment for those working at the Depot and, because of the heavy machinery in use at the depot, will help keep the public safe.



1. Central landscape concept



2. Depot entrance garden concept



Illustrative Landscape Design

# Washwood Heath Depot and Network Integrated Control Centre Plan in Context



# Design Elements

## Maintenance Building

- The Maintenance Building will be the primary hub of operations within the site
- The building will be used to maintain the HS2 train fleet
- There will also be storage facilities to store materials and equipment
- Office accommodation, workshops and staff welfare facilities will be included within the building
- It is expected that over 250 staff covering a range of roles including facilities management, production personnel, cleaning staff, fleet management team and depot drivers will operate from here.



Maintenance Building office accommodation



Maintenance Building southeast approach



Maintenance Building entrance – eastern approach viewpoint

# Design Elements

## Network Integrated Control Centre

- The Network Integrated Control Centre (NICC) is located centrally within the Washwood Heath depot site
- The control centre will be a stand-alone building, designed to accommodate operational and management functions of the HS2 network
- It is expected that around 100 staff will be employed within the NICC.



NICC southwest viewpoint



NICC entrance- eastern viewpoint



NICC southern viewpoint

# Design Elements

## Cleaners and Drivers Building

- The Cleaners and Drivers Building is located in the depots western area
- This Building will host facilities for the train servicing teams and driver training
- The Cleaners and Drivers building will accommodate staff welfare facilities, storage, office space, training rooms and provision for train simulators
- This building will be linked to the stabling area, where trains will be parked, by a subway to allow cleaning to take place
- There will be approximately 200 staff based from this building covering a range of roles including facilities management, production personnel, cleaning staff, fleet management team, depot drivers.



Cleaners and Drivers Building southern viewpoint



Cleaners and Drivers Building south eastern entrance approach



Cleaners and Drivers Building southern viewpoint



# Design Elements

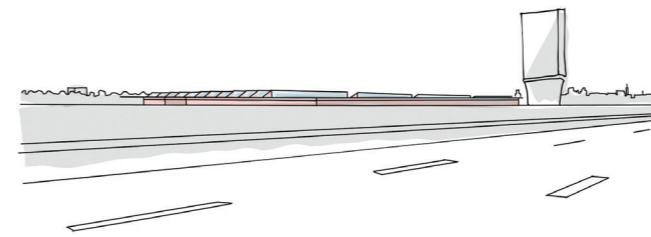
## Stabling Yard

- The stabling yard area is located towards the west side of the depot site and is linked to the Cleaners and Drivers building
- The stabling yard will be where the trains are parked whilst not in operation
- Train cleaning and servicing activities will occur within this area.

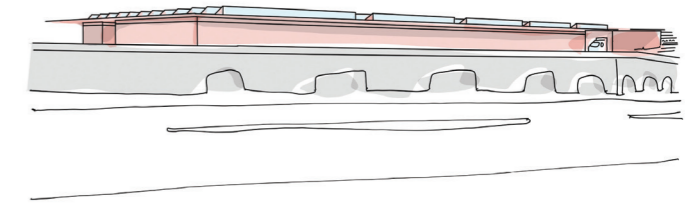


# Design Elements

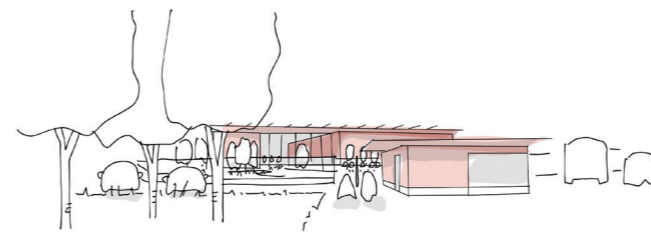
## Viewpoints in Context



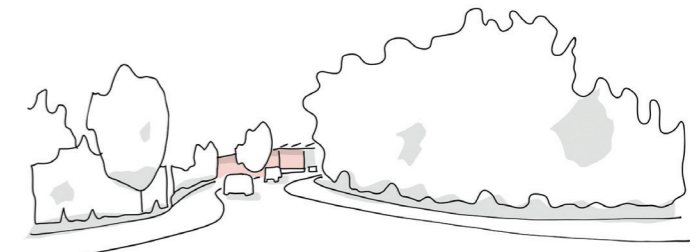
1. Maintenance Building- M6 eastbound viewpoint



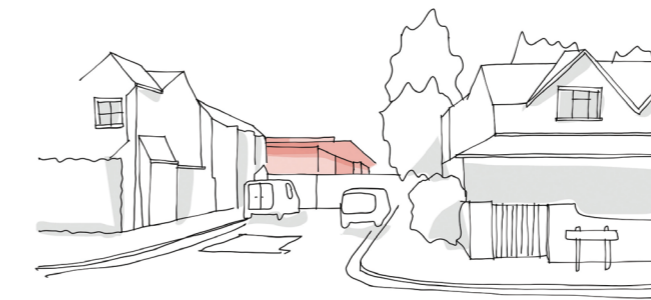
2. Maintenance Building- Heartlands Parkway viewpoint



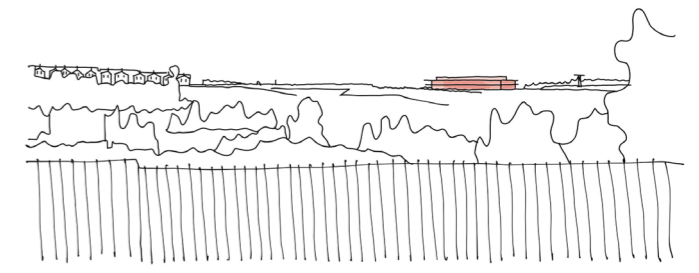
3. Eastern Gatehouse- Wolseley Drive viewpoint



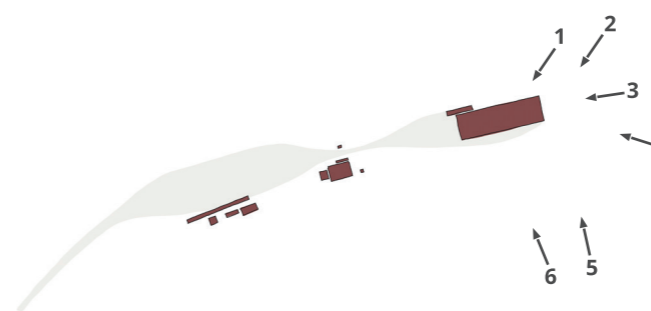
4. Maintenance Building- Bromford Lane viewpoint



5. Maintenance Building- Ingleton Road viewpoint



6. Maintenance Building- Drews Lane viewpoint



Viewpoints in site plan context

The image to the left shows the various viewpoints numbered.

1. M6 Eastbound viewpoint
2. Heartlands Parkway viewpoint
3. Wolseley Drive viewpoint
4. Bromford Lane viewpoint
5. Ingleton Road viewpoint
6. Drews Lane viewpoint

## Further Development

### Connectivity for Staff

Green spaces and accessibility for pedestrians and cyclists has been considered in the design. Pedestrian and cycle journeys have been carefully considered throughout the development of the depot design, with each facility supported by a dedicated safe pedestrian, and where appropriate, cyclist route.

Electric Vehicle (EV) parking, secure cycle parking for staff and visitors and parking for individuals with limited mobility will be provided at all depot facilities - alongside taxi and delivery vehicle drop off.

Cycle and pedestrian pathways will be designed to connect with Birmingham's future transport network.

### Southern Development Land

To the south of the Washwood Heath depot site sits 20 hectares of land (equivalent to approximately 37 football pitches) identified for future employment use, incorporating new green travel routes and a public park.

The southern development land provides the opportunity to improve employment, connectivity, and local environment. HS2 are working closely with Birmingham City Council and other key stakeholders to achieve the aspirations for the area, which will be subject to a separate planning application later on.



# Sustainability and the Environment

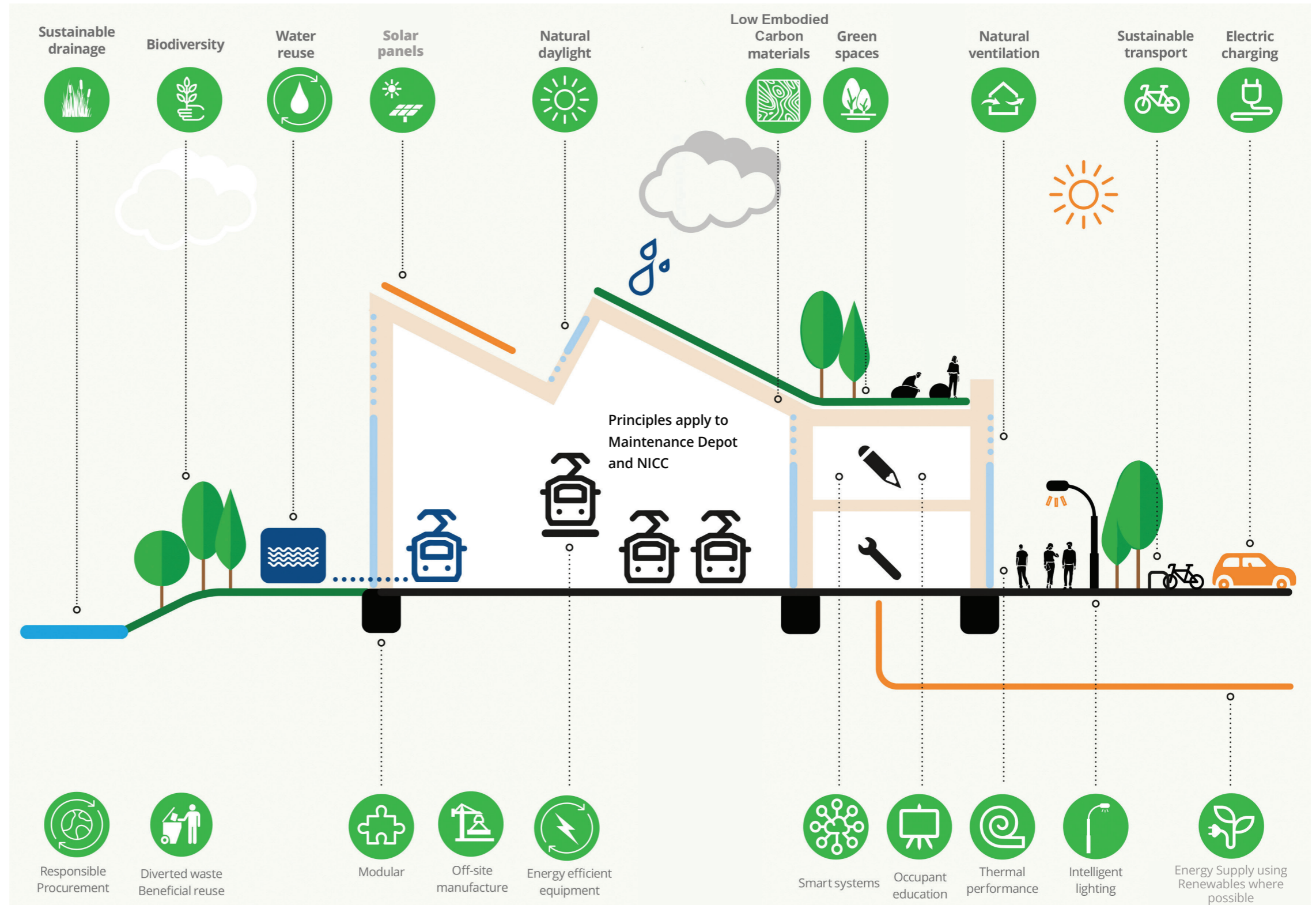
We have a commitment to building a sustainable Depot and Control Centre at Washwood Heath.

## Minimising Environmental Impacts

There are a number of landscaping and environmental requirements to be considered as part of the depot design development.

Environmental mitigation for the site includes:

- The use of new planting and landscaping to create natural noise barriers along the southern boundary
- Noisier activities are located to the north of the site away from residential properties
- The use of low level lighting with shielding wherever possible to minimise the amount of light seen by neighbouring properties
- An amended site layout to maximise the benefits of sunlight and reduce the need for artificial lighting during daylight hours
- The creation of a balancing pond in the design within the Depot boundary to provide sustainable drainage.



Cross-section of the maintenance building showing sustainability design features.

# Skills, Employment and Education

The Washwood Heath Depot and Control Centre provides a unique opportunity for local employment and to enhance skills.

HS2 is committed to leaving a skills legacy. Not only do we need these skills to design and build the railway, but we want the country to be left better skilled than when we started. We want local communities to be able to access the opportunities that the railway brings.

## BBV Skills Academy

HS2 are working to upskill the local community through the dedicated Skills Academy.

Our Main Works Civils Contractor Balfour Beatty Vinci (BBV) has developed a Skills Academy in partnership with South & City College at their Bordesley Green Campus.

The Skills Academy offers hands-on training, accompanied with classroom-based learning. Students gain and develop new skills, while gaining nationally recognised qualifications that prepare them for jobs on HS2.

For more information about the Balfour Beatty Vinci Skills Academy and the training courses available visit [www.sccb.ac.uk/balfour-beatty-vinci](http://www.sccb.ac.uk/balfour-beatty-vinci)

## Apprenticeship Opportunities

As the project develops, HS2 and its supply chain will create at least 2,000 apprenticeship opportunities across a wide range of disciplines and specialisms.

Apprenticeship roles at HS2, provide individuals with the opportunity to learn from the very best in the industry, whilst gaining hands on experience and working towards recognised qualifications.

The construction and operation of the Washwood Heath Depot and Control Centre will provide new

opportunities for apprentices to be part of the programme.

To find out more about apprenticeship opportunities with HS2 Ltd visit [hs2.org.uk/careers](http://hs2.org.uk/careers)

## Jobs Board

In addition to around 550 jobs created by the Washwood Heath Depot and Control Centre when it is operating, HS2 is expected to create 34,000 roles in the years ahead to support the delivery of the railway. Our Supply Chain Jobs Board will showcase these roles as they become available, making it easier for you to search and find the very latest vacancies in your area.

We are committed to supporting those from under-represented and disadvantaged groups to access the job opportunities that the HS2 Programme provides. One way we do that is through a network of Job Brokerage Partners.

Our Job Brokerage Partners offer comprehensive support to jobseekers looking to access HS2 opportunities.

If you would like some support to access our opportunities, please contact your local Job Brokerage Partner to see how they can help.

Information on HS2 Job Brokerage partners can be accessed at <https://www.hs2.org.uk/jobs-and-skills/careers-with-our-supply-chain/>

## Apprentice Spotlight

**Name:** Darren

**Age:** 21

**Location:** Washwood Heath, Birmingham

**Specialism:** Civil Engineering

Find out more about Darren's journey here:



## How to get involved?

### Have your say

The community engagement period will run from **Monday 27 June** and will close on **Monday 25 July**.

We will be holding two local information events where you can find out more about our plans. At the events, you will be able to speak directly to the project team, ask questions and provide feedback.

### The events will be held on:

**Friday 8 July, 16:00-20:00 at St Mark's Church Hall, Washwood Heath, 264 Washwood Heath Rd, Saltley, Birmingham B8 2XS**

**Wednesday 13 July, 16:00-20:00 at Leigh Primary School, Washwood Heath. Birmingham. B8 2YH**

There are several ways that you can provide feedback.

- You can view this brochure online and complete a questionnaire about the scheme on the HS2 website at: [www.hs2.org.uk/in-your-area/local-community-webpages/hs2-in-birmingham/washwood-heath-depot/](http://www.hs2.org.uk/in-your-area/local-community-webpages/hs2-in-birmingham/washwood-heath-depot/)
- You can ask any questions, email your response or send through your questionnaire reponse to [HS2enquiries@hs2.org.uk](mailto:HS2enquiries@hs2.org.uk)
- You can fill in a paper questionnaire and send it to us using the address: FREEPOST HS2 Community Engagement Hub

All responses should be received by **Monday 25 July 2022**. Any responses received after this date, sent to other addresses, or submitted by other means may not be considered as part of the community engagement process.

Enquiries and alternative format:

- If you have any other comments, or if you require this questionnaire in an alternative format, please contact us as follows:
- [HS2enquiries@hs2.org.uk](mailto:HS2enquiries@hs2.org.uk)
- 24/7 freephone helpline: 08081 434 434

### What happens next?

We will carefully consider your views as part of our ongoing design process for the Washwood Heath depot and control centre.

We will be arranging further events to update you on how we have listened to your feedback. We will also share what we've learnt with Birmingham City Council, to help them assess our final designs once we have submitted them for their approval later this year as part of our Schedule 17 submission.

Schedule 17 of the High-Speed Rail (London to West Midlands) 2017 Act is a process for the approval of certain matters relating to the design and construction of the railway from the local council.

# Keeping you informed

We are committed to keeping you informed about work on HS2. This includes ensuring you know what to expect and when to expect it, as well as how we can help.

## Our independent commissioners

We have an independent Residents' Commissioner whose job is it to make sure we keep to the promises we make in our Residents Charter. Our independent Construction Commissioner's role is to mediate and monitor the way in which we manage and respond to construction complaints.

For more information visit  
[www.hs2.org.uk/in-your-area](http://www.hs2.org.uk/in-your-area)

## Holding us to account

If you are unhappy for any reason, you can make a complaint by contacting our HS2 Helpdesk team.

For more information visit  
[www.hs2.org.uk/how-to-complain](http://www.hs2.org.uk/how-to-complain)

Please contact us if you'd like a free copy of this document in large print, Braille, audio or easy read. You can also contact us for help and information in a different language.

HS2 Ltd is committed to protecting personal information. If you wish to know more about how we use your personal information, please see our Privacy Notice ([www.gov.uk/government/publications/highspeed-two-ltdprivacy-notice](http://www.gov.uk/government/publications/highspeed-two-ltdprivacy-notice))

## Contact us

Our HS2 Helpdesk team are available all day, every day. You can contact them via:

**Freephone**  
08081 434 434

**Minicom**  
08081 456 472

**Email**  
[hs2enquiries@hs2.org.uk](mailto:hs2enquiries@hs2.org.uk)

**Write to FREEPOST**  
HS2 Community Engagement Hub

**Website**  
[www.hs2.org.uk](http://www.hs2.org.uk)

To keep up to date with what is happening in your area, visit:  
[www.hs2inyourarea.co.uk](http://www.hs2inyourarea.co.uk)