

HS2

Notice of Utility Works off Attleboro lane, Water Orton

June 2022 | www.hs2.org.uk

High Speed Two (HS2) is the new high speed railway for Britain. To facilitate the delivery of HS2 Western Power Distribution will be installing high voltage cables.

What are we doing

In order to provide electricity supplies for equipment associated with the construction of the HS2 scheme, Western Power Distribution shall be installing high voltage cables and switchgear.

The work will involve:

- Connecting cables within the ground on Attleboro Lane.
- Clearing grassed areas within the site.

How will this affect me?

There may be some disruption within the area due to the scope of excavation and installation work and we have attached a plan that shows the proposed work location, site access and traffic management measures that will be deployed during the work.

Access will be maintained for residents at all times.

Working hours will be 8am until 6pm Monday to Sunday.

Working during Covid-19

WPD is delivering these works as part of the HS2 construction programme. The Government's current COVID-19 strategy makes clear that construction activity can continue as long as it complies with Government and Public Health England (PHE) advice on dealing with COVID-19. Please be assured that those sites that are working, are doing so because they can operate within Public Health England and construction industry guidelines.

If you have a question about HS2 or our works, please contact our helpdesk on 08081 434 434 or email HS2enquiries@hs2.org.uk

Notification



Duration of works

The main works will begin on 4 July and are expected to last until 15 July 2022.

What to expect

The works will consist of excavation and installation of high voltage cables. There will be traffic management over a short length of Attleboro Lane, but access will be maintained for residents at all times.

Working hours

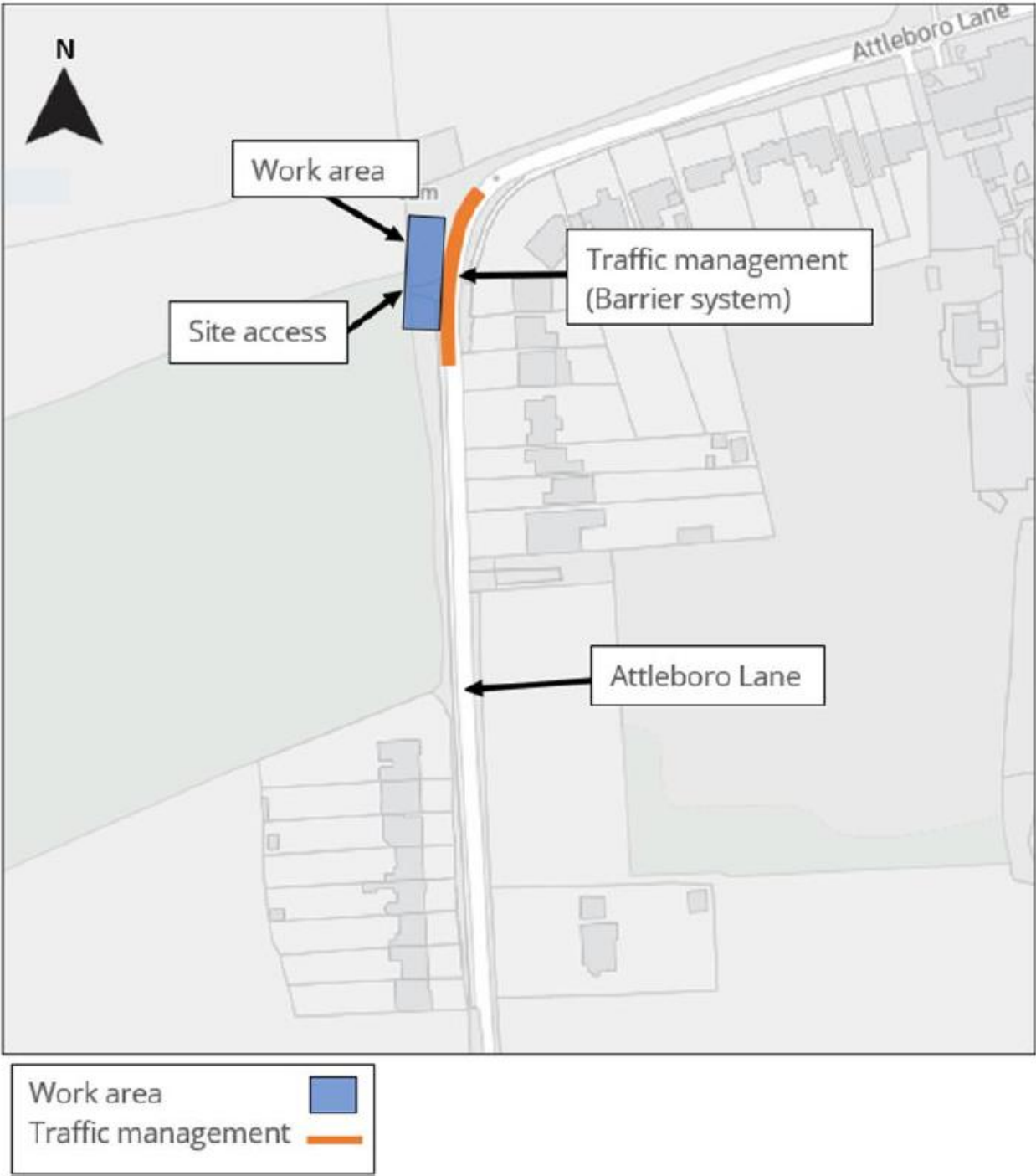
Monday-Sunday
8am-6pm with an hour either side to allow for site set-up and closedown.

What we will do

Implement traffic management as shown on the map
Keep the site clean and tidy.
Issue updates should the working hours or dates change.



Plan showing proposed work and site access details



HS2

What else is happening in your area?

www.hs2.org.uk

About our Community and Business Funds

We are offering two funds that are available to local communities and businesses between Birmingham and the West Midlands, to help with the disruption caused by our construction work. These are the Community and Environment Fund (CEF) and the Business and Local Economy Fund (BLEF).

The CEF is designed to give communities the opportunity to share in the benefits of HS2. It is an allocated fund that communities can apply for, to help to support local projects that aim to improve their local area.

The BLEF is designed to support local economies that may be disrupted by the construction of HS2. BLEF grants are for local business support organisations and local authorities to help maintain business activity in local communities.

For more information about each of these funds, including how to apply, please visit: <https://www.groundwork.org.uk/hs2funds>



About our Commonplace websites

The planning and construction of HS2 is a huge operation – it is currently the largest infrastructure project in Europe.

It's important to us that you are kept up to date about the progress of the Project and any work that may impact you or your community. We have a series of community-focused websites where you can find out what is happening in your local area and sign up for updates about our activities.

Our Commonplace sites currently serve Birmingham, Bucks and Oxfordshire, Cheshire, Euston and Camden, Hertfordshire, Hillingdon, Northamptonshire, Old Oak, Solihull, Staffordshire and Warwickshire. More sites are being prepared to serve other areas.

To find your local Commonplace website, visit:
<https://hs2.commonplace.is/>

For further information about Phase 2a and Phase 2b, visit :
<https://www.gov.uk/government/organisations/high-speed-two-limited>



Keeping you informed

We are committed to keeping you informed about work on HS2. This includes ensuring you know what to expect and when to expect it, as well as how we can help.

Residents' Charter and Commissioner

The Residents' Charter is our promise to communicate as clearly as we possibly can with people who live along or near the HS2 route.
www.gov.uk/government/publications/hs2-residents-charter

We also have an independent Residents' Commissioner whose job is to make sure we keep to the promises we make in the Charter and to keep it under constant review. Find reports at:
www.gov.uk/government/collections/hs2-ltd-residents-commissioner
You can contact the Commissioner at:
residentscommissioner@hs2.org.uk

Construction Commissioner

The Construction Commissioner's role is to mediate and monitor the way in which HS2 Ltd manages and responds to construction complaints. You can contact the Construction Commissioner by emailing:
complaints@hs2-cc.org.uk

Property and compensation

You can find out all about HS2 and properties along the line of route by visiting:
www.gov.uk/government/collections/hs2-property
Find out if you're eligible for compensation at:
www.gov.uk/claim-compensation-if-affected-by-hs2

Holding us to account

If you are unhappy for any reason you can make a complaint via the helpline. For more details on our complaints process, please visit our website:
www.hs2.org.uk/how-to-complain

Contact Us

If you have any questions about this notification of works, please get in touch.



24/7 Freephone **08081 434 434**

Minicom **08081 456 472**

Email **HS2enquiries@hs2.org.uk**

Write to:

FREEPOST

HS2 Community Engagement

Website **www.hs2.org.uk**

To keep up to date with what is happening in your local area, visit:
www.hs2.commonplace.is

Please contact us if you'd like a free copy of this document in large print, Braille, audio or easy read. You can also contact us for help and information in a different language.

HS2 Ltd is committed to protecting personal information. If you wish to know more about how we use your personal information please see our Privacy Notice
<https://www.gov.uk/government/publications/high-speed-two-ltd-privacy-notice>

Reference number HS2-MW-UT-Ph1-Ar-No-N1-UT-40-27/05/2022

High Speed Two (HS2) Limited, registered in England and Wales.
Registered office: Two Snowhill, Snow Hill Queensway, Birmingham B4 6GA.
Company registration number: 06791686. VAT registration number: 181 4312 30.

HS2