

Contact our HS2 Helpdesk team on **08081 434 434**

HS2 Update

North Chilterns Area | Autumn 2022

EKFB
Working in
partnership with **HS2**

High Speed Two (HS2) is the new high speed railway for Britain. Should you have any questions or enquiries regarding our works, please contact the Helpdesk details of which can be found in this newsletter. We will be keeping our local website **www.hs2inbucksandbox.co.uk** up to date with information on our works in the local area.

Update on our continuing works

Over the next few months, you can expect to see the following works in your local area:

- Sheet piling for the Rocky Lane bridge
- A413 London Road utility diversion and preparatory works for the temporary road realignment;
- Continued construction of the Bacombe Lane and Ellesborough Road temporary realignments;
- Construction and operation of our plant and vehicle crossings – Nash Lee Road and Bacome Lane;
- The start of our abnormal load deliveries to Great Missenden for the construction of the structures;
- Drainage surveys as well as topographical surveys involving lane and road closures;
- Ground Investigations, surveys and utility trial hole works;
- Continuation of the piling works for the Wendover Dean and Small Dean Viaducts;
- Ecology investigations and vegetation clearance works;
- A413 lane and road closures for utility diversions and excavation works;
- Chiltern Rail line temporary closures and possessions;
- Completion and operation of our conveyor;
- Excavation, movement, and storage of earthworks including temporary stockpiles;
- Operation of our new Rocky Lane compound.



Join us ...

You can expect to see our mobile visitor centre visiting a local community near you until the end of Autumn, visits will then resume next year.

This specialised vehicle will enable us to increase the reach and visibility of our local engagement team, while giving communities a safe, comfortable space where they can find out more about the HS2 project and the work EKFB do.

Please contact the HS2 Helpdesk or visit hs2.org.uk/events for more information on events in your area.

www.hs2.org.uk/events





A413 Realignment and Small Dean Viaduct Update

Over the coming months the construction of Small Dean Viaduct foundations will be in full swing. This means you will see some changes in and around the viaduct site.

You may see from the A413 that the bentonite plant is now complete and ready for use, this will aid in the commencement of piling for the Viaduct's piers and abutments.

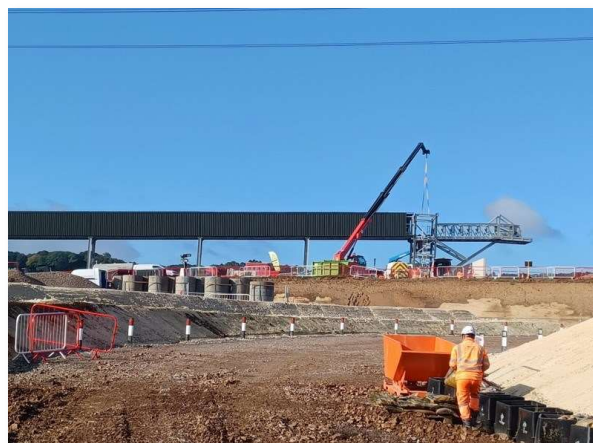
The first realignment of the A413 will take place in early 2023 and will involve moving the whole road width to the east to make the area between the A413 and the railway wider for our construction works. Our utilities contractor has been digging trial holes along the A413 to establish the location of the Thames Water main to allow us to divert the main, ensuring we avoid clashes with the future embankment of the viaduct piers. Later this year we will dig trenches parallel to the road to allow the diverted water main and other utility services to be installed, traffic management will be required.

Ellesborough Road Temporary Diversion

The temporary diversions of these two roads are now underway. The Ellesborough Road diversion is being constructed to the rear of the properties at the north-eastern end of the road, just before the bridge over the Chiltern Rail line and the bypass. The diversion will run from the access track to the former cricket pitch and re-join Ellesborough Road approximately 350m to the east.



The image above shows the Bentonite Plant as it was being set-up in September at Small Dean Viaduct Launch compound.



The image above shows the final stages of the A413 conveyor installation in September 2022.

The new diversion route is likely to open in the first quarter of 2023 at which point the current alignment of Ellesborough Road will be closed. Other than short duration closures from time to time, this road will be fully open for the duration of the project.

At the end of the project the diverted road will be removed and the current alignment of Ellesborough Road will be reinstated.

Nash Lee Road and Nash Lee Lane Diversions



As works in this area continue, there will be a series of lane closures in October and November in the Nash Lee area.

During September, we completed the temporary works to install a plant crossing point on Nash Lee Road which will enable machinery and site vehicles to access our sites safely. This is due to become operational at the end of October when traffic lights will be introduced. This crossing will significantly reduce the interface between site and public vehicles.

There is currently a second lane closure in place until the 21st October so that our site team can begin tying in the western opening of the Nash Lee Road Diversion. This traffic management will involve a three-way traffic light system between Nash Lee Road and Nash Lee Lane.

In November a lane closure will be introduced on Nash Lee Road to install and connect a water main to our Nash Lee compound.

We expect both the Nash Lee Road and Nash Lee Lane diversions to become operational in early 2023. This will enable us to construct the realignment of Nash Lee Road and construct a bridge to take traffic over the HS2 line. These works are planned to be completed by 2025 at which point the temporary diversions will be removed and the area reinstated and landscaped.

Rocky Lane Update

Our Rocky Lane Compound is now operational. The entrance to the compound is shared with our Small Dean Viaduct Compound meaning you may notice an increased amount of traffic utilising our A413 site entrance near the Wendover bypass roundabout.

In November, we are expecting to commence the sheet piling for the bridge to take the HS2 line over the road.

Works should be completed with minimal disruption to Rocky lane but there may be a short period where traffic could be held while plant and materials are moved into position.

Wendover Dean Viaduct

Throughout September we completed 50% of the bored piling works which enables the next stage of the foundation works to begin.

The sheet piling works at the launch platform were completed and the excavation of the north abutment commenced, meaning the Viaduct's base is beginning to take shape.

Work has also started on the Wendover Dean Viaduct Launch compound, this will provide welfare for the Viaduct's construction team.

Looking forward to November, the first abnormal load deliveries will arrive at the viaduct, this will include the structural steelwork, you will find more on this in the 'Logistics Update' section.

Mobile Visitor Centre Update

Our mobile visitor centre has been in operation since March of this year. In that time, we have undertaken over 50 events between Great Missenden and Southam and spoken to over 1,200 people about our works.

Locally we have held events in Great Missenden, The Lee, Wendover and Butlers Cross as well as the Bucks Show. Further events are planned for Great Missenden and Butlers Cross on 3rd and 9th November.



The image above shows our Mobile Visitor Centre in Manor Waste, Wendover, October 2022.

Public Rights of Way, Small Dean

To enable the construction of Small Dean Viaduct we currently have a long-term closure of Small Dean Lane in place.



To enable walkers, cyclists and horse riders to cut through our works safely we have constructed a temporary bridleway from the bottom of Small Dean Lane.

The bridleway was opened in September and will feature a plant crossing which will be manned by traffic marshals to ensure a safe crossing for all who use it.

The bridleway will remain in place until we are able to reinstate and reopen Small Dean Lane in 2024.



The image above shows the new Small Dean bridleway



The image above shows a view of the South Heath Cutting, the green crane to the middle right of the image shows shaft 24 of the South Heath Culvert tunnel boring machine chamber in August 22.

Earthworks and conveyor update

As the dark nights draw in our earthworks activity will start to decrease and therefore the hours of work will also reduce.

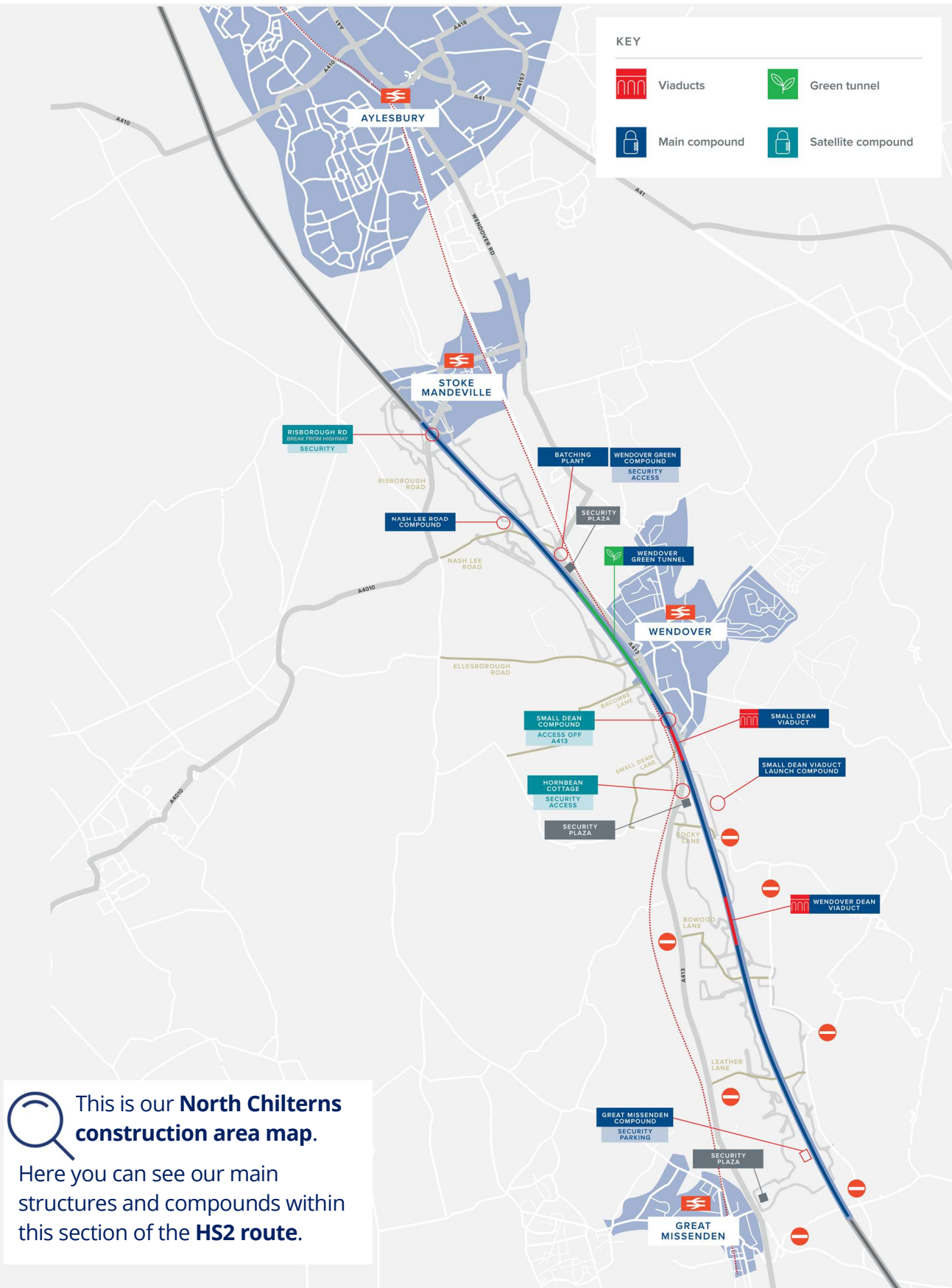
To make the best use of the long days and dry weather conditions during the warmer months, we received consent to work outside our core working hours from 7am to 7pm. However, from the end of October we will be reverting to our core hours of 8am to 6pm.

At the South Heath Cutting, the chalk from the cutting currently being 'stabilised'. The natural chalk in the area we've found to be too infirm, therefore it is being put through a process whereby the chalk is combined with lime to strengthen the material before being reutilised for construction purposes. This stabilisation process ensures we can repurpose chalk from the cutting and results in less material deliveries to our sites.

Slightly further North, the conveyor crossing over the A413 will soon be operational, with the finishing touches being put in place over the course of October.

In preparation for this we have begun moving a number of our stockpiles towards the conveyor site, with a total of circa 45,000metres³ of earth being moved each month. Once the conveyor becomes operational, we will begin transporting the topsoil and subsoil for reuse in other areas of the project.





Frequently Asked Questions

Some of our most commonly asked questions in your area

Q: I'm concerned about mud on my local roads from your construction sites.

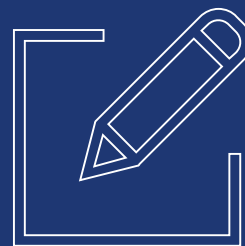
A: We have a suite of road sweepers that are operational throughout our normal working hours, they cover our HGV routes as well as locations near our sites and compounds. Alongside this we have our Traffic Safety Control Officers who are on site daily, monitoring the road conditions, traffic congestion and more.

Q: Why are your worksites lit up at night?

A: We have 24/7 security at our construction sites and therefore we need appropriate lighting for the safety and welfare of our security staff. Where possible we switch off the majority of lights overnight and we ensure all lighting is correctly positioned and monitored in line with HS2's Code of Construction Practice.

Q: How can I get a quick response to a construction related query?

A: The HS2 Helpdesk is open 24 hours a day (08081 434 434 / HS2enquiries@hs2.org.uk) and we thank you for raising your queries, comments and concerns with us – these allow us to improve how we work. In your area EKFB are now responding to your queries and complaints within 3.5



Careers with HS2

The construction of HS2 will show the world the very best of British skills, innovation and ambition.

The first phase of the project will employ construction workers, specialist engineers, architects, designers and project managers drawn from across the UK and beyond, using cutting-edge technology and world-leading construction techniques.

You don't have to be an engineer to work in engineering, so come on board, and let's do something exceptional together.

For further information about the HS2 Educational programme please visit our website, www.hs2.org.uk.





Logistics update

In an effort to reduce our impact on the local road network as well as the amount of work on site, many aspects

of the bridges in the North Chilterns Area are being created offsite. Throughout 2022 we have been receiving deliveries of materials to our sites along the A413.

As work progresses, we will start to receive deliveries that are classed as abnormal loads.

An abnormal load is a load which due to its weight or dimensions cannot be carried on a conventional goods vehicle and requires a special vehicle and arrangements for its transport.

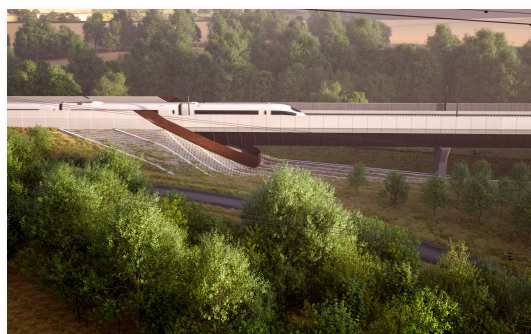
In September, we conducted an abnormal load trial run from the M40 to our Great Missenden compound with a 30m long HGV.

The route taken from Junction 1 of the M40 to Great Missenden was conducted out of hours from 8pm and was a success.

For a week in early November, we will start to receive steel beams for the construction of the Wendover Dean Viaduct. As with the trial run, the length of these steel beams will be up to 30m long. The deliveries will take place outside of peak hours either in the evening or overnight to reduce any inconvenience to road users.

Further deliveries of steel beams and precast concrete segments for our structures will continue to be delivered from early 2023 onwards.

For the safety of road users, we are required to have temporary traffic management to provide enough space for the vehicles to navigate the roads and safely access our construction sites. Escort vehicles will also be in operation to support the delivery



This Computer-Generated Image (CGI) is an artist's impression of what the Wendover Dean Viaduct will look like.



The above image is an example of an abnormal load of steel being delivered to an HS2 site.

Temporary traffic lights will be located at the Amersham roundabout on the A413 and A355, the roundabout on the A413 and A404, the rail bridge by Deep Mill Lane near Little Missenden and between Link Road and Firth Hill roundabout on the A413 at Great Missenden.

The abnormal load delivery route has been decided by and agreed between hauliers and the police.

We thank you for your co-operation and apologise in advance for any inconvenience these deliveries may cause.

What else is happening in your area?

www.hs2.org.uk

Contact our HS2 Helpdesk team

Our team is here to listen and respond to your enquiry, complaint or feedback to help us be a good neighbour.

You can contact our Helpdesk team all day, every day of the year on:

Freephone: **08081 434 434**

Minicom: **08081 456 472**

Email: hs2enquiries@hs2.org.uk

Keep up-to-date with your local community website

To find out more about what's happening in your area and receive regular email updates, you can sign up to our local community websites at: www.hs2inyourarea.co.uk.

About our Community and Business Funds

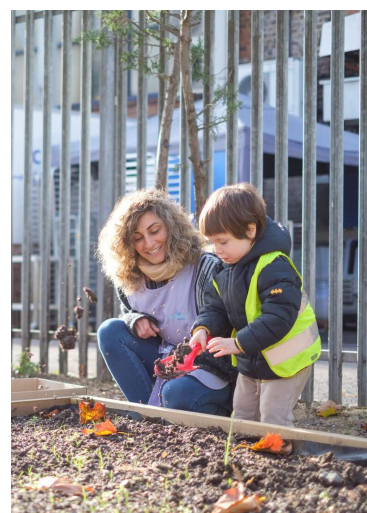
We are offering two funds that are available to local communities and businesses between the West Midlands and London, to help with the disruption caused by our construction work. These are the Community and Environment Fund (CEF) and the Business and Local Economy Fund (BLEF).

The CEF is designed to give communities the opportunity to share in the benefits of HS2. It is an allocated fund that communities are able to apply for, to help to support local projects that aim to improve their local area.

The BLEF is designed to support local economies that may be disrupted by the construction of HS2. BLEF grants are for local business support organisations and local authorities to help maintain business activity in local communities.

For more information about each of these funds, including how to apply, please visit:

<https://www.groundwork.org.uk/hs2funds>



Keeping you informed

We are committed to keeping you informed about work on HS2. This includes ensuring you know what to expect and when to expect it, as well as how we can help.

Residents' Charter and Commissioner

The Residents' Charter is our promise to communicate as clearly as we possibly can with people who live along or near the HS2 route.

www.gov.uk/government/publications/hs2-residents-charter

We also have an independent Residents' Commissioner whose job is to make sure we keep to the promises we make in the Charter and to keep it under constant review. Find reports at:

www.gov.uk/government/collections/hs2-ltd-residents-commissioner

You can contact the Commissioner at:
residentscommissioner@hs2.org.uk

Construction Commissioner

The Construction Commissioner's role is to mediate and monitor the way in which HS2 Ltd manages and responds to construction complaints. You can contact the Construction Commissioner by emailing:
complaints@hs2-cc.org.uk

Property and compensation

You can find out all about HS2 and properties along the line of route by visiting:

www.gov.uk/government/collections/hs2-property

Find out if you're eligible for compensation at:

www.gov.uk/claim-compensation-if-affected-by-hs2

Holding us to account

If you are unhappy for any reason you can make a complaint by contacting our HS2 Helpdesk team. For more details on our complaints process, please visit our website:

www.hs2.org.uk/how-to-complain

Contact Us

Contact our HS2 Helpdesk team all day, every day of the year on:

 Freephone **08081 434 434**

 Minicom **08081 456 472**

 Email **HS2enquiries@hs2.org.uk**

Write to:

FREEPOST

HS2 Community Engagement

Website **www.hs2.org.uk**

To keep up to date with what is happening in your local area, visit:
www.HS2inyourarea.co.uk

Please contact us if you'd like a free copy of this document in large print, Braille, audio or easy read. You can also contact us for help and information in a different language.

HS2 Ltd is committed to protecting personal information. If you wish to know more about how we use your personal information please see our Privacy Notice
<https://www.gov.uk/government/publications/high-speed-two-ltd-privacy-notice>

Reference number: HS2-MW-EK-Ph1-Ar-Ce-C2-CR-41-13/10/2022 | 1MC12-EKF-IN-NTE-CS03-000043

High Speed Two (HS2) Limited, registered in England and Wales.

Registered office: Two Snowhill, Snow Hill Queensway, Birmingham B4 6GA.

Company registration number: 06791686. VAT registration number: 888 8512 56