

HS2

Updated notice of STW Asset Survey Works

June 2022 www.hs2.org.uk

High Speed Two (HS2) is the new high speed railway for Britain.

What are we doing?

We previously contacted you to say that we would be closing Northumberland Street from Monday 30 May to Thursday 30 June. We have now updated this notice and the closure will remain in place until Summer 2025 because HS2 will then use the same closure in order to construct the piers for the viaduct as part of HS2 main works.

How will this impact you?

The road closure should have limited impact on the area ensuring that access is maintained down Northumberland Street, up to the bridge.

All works will be in a secured area and an increase in construction traffic during the full extent of the works is to be expected.

We will do everything to keep noise and dust down to a minimum during the construction of the sewer diversion and further HS2 work on Northumberland Street.

HS2 during the coronavirus pandemic

We are continually reviewing the work on our construction sites in line with Government and Public Health England (PHE) advice on dealing with COVID-19. The Government's current COVID-19 strategy makes clear that construction activity can continue so long as it complies with this guidance. The health and safety of our workforce and the communities we affect is our key priority. Please be assured that those sites that are currently still working are doing so because they can operate within PHE and construction industry guidelines.

If you have a question about HS2 or our works, please contact our helpdesk on 08081 434 434 or email HS2enquiries@hs2.org.uk

Notification



Duration

- Work will now be undertaken between 30 May 2022 and Summer 2025
- Our core working hours will be 8am to 6pm Monday – Friday and 8am to 1pm Saturday
- We may be on-site one hour either side of these times for setup and close-down

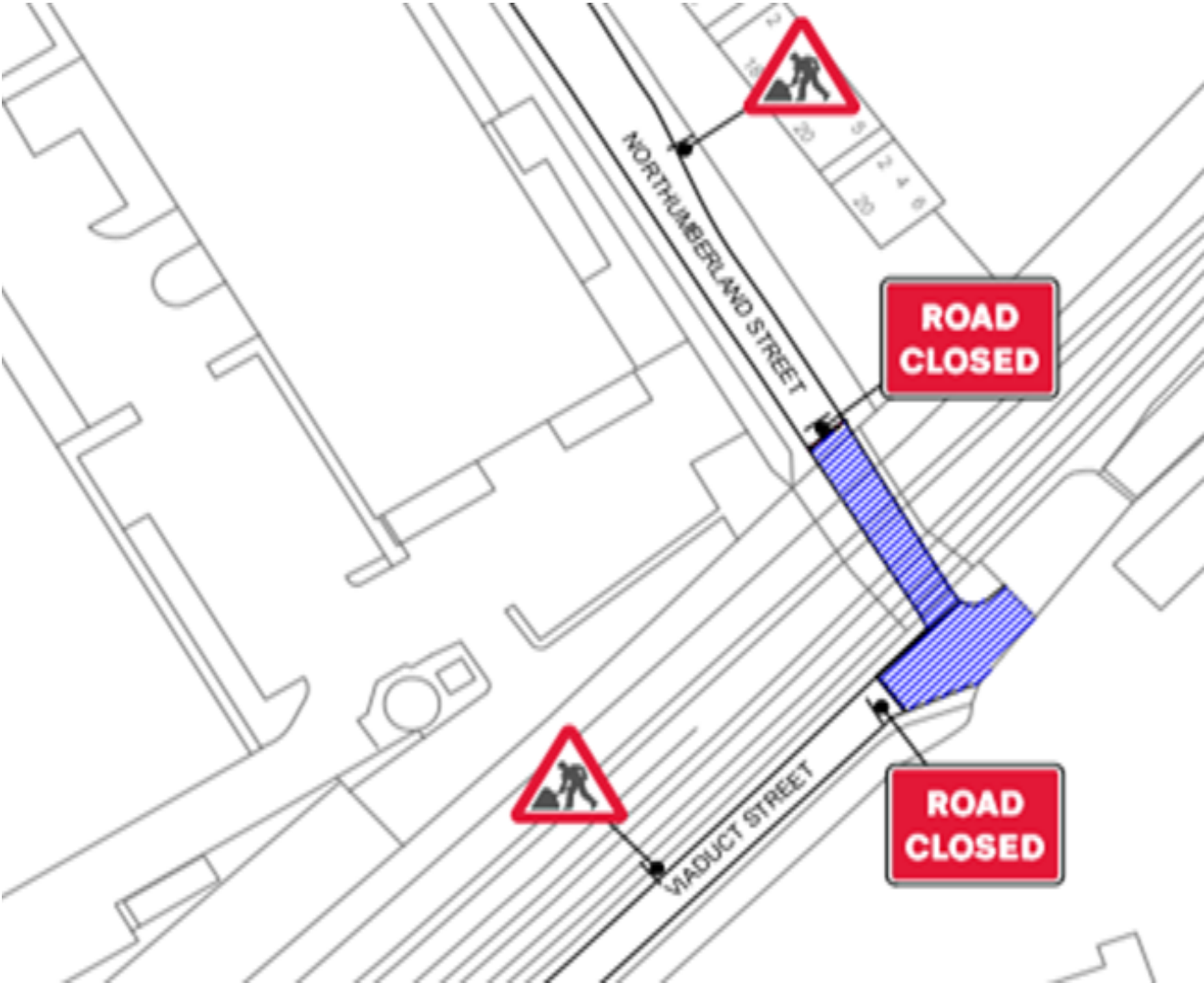
What to expect

- There will be an increase in construction traffic as Severn Trent's contractors, J Murphy and Sons set up site, mobilise equipment and materials and undertake the sewer diversion. Every endeavour will be made to keep disruption to a minimum

What we will do

- If you are directly impacted by the work, Severn Trent will speak with you before it begins to ensure access is not impacted
- At no time will your water or sewer services be interrupted. We will complete the work as quickly as possible to avoid disruption and provide you access throughout.

HS2



HS2

What else is happening in your area?

www.hs2.org.uk

Contact our HS2 Helpdesk team

Our team is here to listen and respond to your enquiry, complaint or feedback to help us be a good neighbour.

You can contact our Helpdesk team all day, every day of the year on:

Freephone: **08081 434 434**

Minicom: **08081 456 472**

Email: hs2enquiries@hs2.org.uk

Keep up-to-date with your local community website

To find out more about what's happening in your area and receive regular email updates, you can sign up to our local community websites at: www.hs2inyourarea.co.uk.

About our Community and Business Funds

We are offering two funds that are available to local communities and businesses between the West Midlands and London, to help with the disruption caused by our construction work. These are the Community and Environment Fund (CEF) and the Business and Local Economy Fund (BLEF).

The CEF is designed to give communities the opportunity to share in the benefits of HS2. It is an allocated fund that communities are able to apply for, to help to support local projects that aim to improve their local area.

The BLEF is designed to support local economies that may be disrupted by the construction of HS2. BLEF grants are for local business support organisations and local authorities to help maintain business activity in local communities.

For more information about each of these funds, including how to apply, please visit: <https://www.groundwork.org.uk/hs2funds>



Keeping you informed

We are committed to keeping you informed about work on HS2. This includes ensuring you know what to expect and when to expect it, as well as how we can help.

Residents' Charter and Commissioner

The Residents' Charter is our promise to communicate as clearly as we possibly can with people who live along or near the HS2 route.

www.gov.uk/government/publications/hs2-residents-charter

We also have an independent Residents' Commissioner whose job is to make sure we keep to the promises we make in the Charter and to keep it under constant review. Find reports at: www.gov.uk/government/collections/hs2-ltd-residents-commissioner

You can contact the Commissioner at: residentscommissioner@hs2.org.uk

Construction Commissioner

The Construction Commissioner's role is to mediate and monitor the way in which HS2 Ltd manages and responds to construction complaints. You can contact the Construction Commissioner by emailing: complaints@hs2-cc.org.uk

Property and compensation

You can find out all about HS2 and properties along the line of route by visiting:

www.gov.uk/government/collections/hs2-property

Find out if you're eligible for compensation at: www.gov.uk/claim-compensation-if-affected-by-hs2


Holding us to account

If you are unhappy for any reason you can make a complaint via the helpline. For more details on our complaints process, please visit our website: www.hs2.org.uk/how-to-complain

Contact Us

If you have any questions about this notification of works, please get in touch.

 24/7 Freephone **08081 434 434**

 Minicom **08081 456 472**

 Email **HS2enquiries@hs2.org.uk**

Write to:

FREEPOST

HS2 Community Engagement

Website **www.hs2.org.uk**

To keep up to date with what is happening in your local area, visit: **www.hs2.commonplace.is**

Please contact us if you'd like a free copy of this document in large print, Braille, audio or easy read. You can also contact us for help and information in a different language.

HS2 Ltd is committed to protecting personal information. If you wish to know more about how we use your personal information please see our Privacy Notice

<https://www.gov.uk/government/publications/high-speed-two-ltd-privacy-notice>

Helpdesk reference: HS2-MW-UT-Ut-Ph1-Ar-No-N1-UT-35-10/05/2022