



# Notice of works on Park Lane, Lichfield

May 2022 | [www.hs2.org.uk](http://www.hs2.org.uk)

High Speed Two (HS2) is the new high speed railway for Britain. Balfour Beatty VINCI (BBV) is working in partnership with HS2 Ltd to build the new high-speed railway in your area.

## The work we will be doing

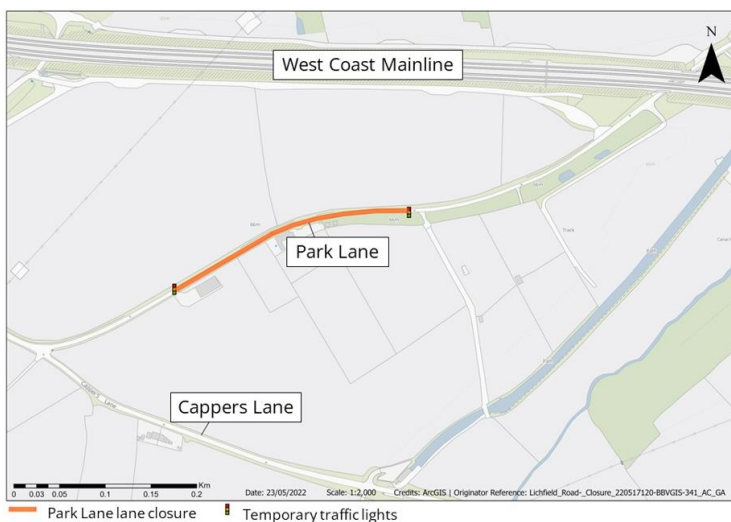
We will be installing a single lane closure and temporary traffic lights on Park Lane. This is to allow us to complete the installation of new boundary fencing and the translocation of hedgerows.

## When the work will take place

These works will take place along Park Lane from Monday 20 June for two weeks. Our working hours will be from 9:30am until 3:30pm on weekdays only. Our workforce can be on-site one hour before and after to set up and secure our equipment.

## Where we will be working

We will be installing temporary traffic lights and a lane closure as detailed on the map below from Monday 20 June for two weeks.



**If you have a question about HS2 or our works, please contact our HS2 Helpdesk team on 08081 434 434 or email [hs2enquiries@hs2.org.uk](mailto:hs2enquiries@hs2.org.uk)**

## Duration of works

Two weeks from Monday 20 June

Our working hours will be 9:30am to 3:30pm Monday to Friday.

Please note these works maybe subject to change.

## What to expect

Temporary traffic lights and lane closure

Low levels of noise from our machinery

## What we will do

Keep all sites safe and secure, while keeping disruption to a minimum

Inform you in advance of any changes to the dates shown.

Keep you informed of updates via:

**[www.hs2.org.uk/staffordshire/](http://www.hs2.org.uk/staffordshire/)**

# Keeping you informed

We are committed to keeping you informed about work on HS2. This includes ensuring you know what to expect and when to expect it, as well as how we can help you.

## The Residents' Commissioner

The independent Residents' Commissioner oversees and monitors our commitments to you.

The commissioner's reports and our responses can be found at [www.gov.uk/government/collections/hs2-ltd-residents-commissioner](http://www.gov.uk/government/collections/hs2-ltd-residents-commissioner)

The Residents' Commissioner makes sure we fulfil the commitments in the HS2 Community Engagement Strategy (<https://bit.ly/3oOA25j>).

The Residents' Commissioner can be contacted on: [residentscommissioner@hs2.org.uk](mailto:residentscommissioner@hs2.org.uk)

## Construction Commissioner

The independent Construction Commissioner regularly meets our Chief Executive Officer to raise any concerns or emerging trends across HS2.

The Construction Commissioner's role has been developed to monitor the way we manage and respond to construction complaints.

The commissioner mediates on disputes about construction, involving individuals and organisations, that we can't resolve. The commissioner advises members of the public about how to make a complaint about construction.

The Construction Commissioner can be contacted on: [complaints@hs2-cc.org.uk](mailto:complaints@hs2-cc.org.uk)

## Property and compensation

You can find out about HS2 and properties along the route by visiting:

[www.gov.uk/government/collections/hs2-property](http://www.gov.uk/government/collections/hs2-property)

Find out if you can claim compensation at:

[www.gov.uk/claim-compensation-if-affected-by-hs2](http://www.gov.uk/claim-compensation-if-affected-by-hs2)

## Holding us to account


If you are unhappy for any reason you can make a complaint by contacting the HS2 Helpdesk. For more details on our complaints process, please visit:

[www.hs2.org.uk/in-your-area/contact-us/how-to-complain/](http://www.hs2.org.uk/in-your-area/contact-us/how-to-complain/)

## Contact us

Contact our HS2 Helpdesk team all day, every day of the year on:

 Freephone **08081 434 434**

 Minicom **08081 456 472**

 Email **[HS2enquiries@hs2.org.uk](mailto:HS2enquiries@hs2.org.uk)**

Write to:

**FREEPOST**

**HS2 Community Engagement**

Website **[www.hs2.org.uk](http://www.hs2.org.uk)**

To keep up to date with what is happening in your local area, visit: **[www.HS2inyourarea.co.uk](http://www.HS2inyourarea.co.uk)**

**Please contact us if you'd like a free copy of this document in large print, Braille, audio or 'easy read' format. You can also contact us for help and information in a different language.**

HS2 Ltd is committed to protecting personal information. If you wish to know more about how we use your personal information please see our Privacy Notice:

<https://www.gov.uk/government/publications/high-speed-two-ltd-privacy-notice>

**Reference number: HS2-MW-BBV-Ph1-Ar-No-N2-Traf-5-10/05/2022**

High Speed Two (HS2) Limited, registered in England and Wales.

Registered office: Two Snowhill, Snow Hill Queensway, Birmingham B4 6GA.

Company registration number: 06791686. VAT registration number: 888 8512 56