



Notice of trial holes and resurfacing on Old Oak Common Lane

May 2022 | www.hs2.org.uk

High Speed Two (HS2) is the new high speed railway for Britain.

We are continually reviewing the works on our construction sites in line with Government and Public Health England (PHE) advice on dealing with COVID-19. The Government's current strategy makes it clear that construction activity can continue as long as it complies with this guidance. Please be assured that only sites that can operate within the guidelines are operational. All sites will remain under constant review.

Excavations on Old Oak Common Lane

As part of the wider site infrastructure works at the Old Oak Common station site, we will be digging 3 deep trial pits (holes) along the southbound footway of Old Oak Common Lane. They will be filled back in after the work has been completed. The purpose of the trial pits is to locate existing services underground.

This work will take place during our working hours of 8am to 6pm Monday 9 May to Friday 13 May.

Activities include digging a hole with an excavator and then hand digging around the live services. The excavated materials will be transported offsite by lorry. Once the work has been completed, the holes will be filled in.

Resurfacing of Old Oak Common Lane

We will be resurfacing a section of Old Oak Common Lane out of normal working hours from Saturday 14 May 9am to 8.30pm and Sunday 9am to 8pm due to lower volume of traffic on these days. A full road closure will be required due to the size of the machinery being used and for continuous working.

The existing road surface will be removed, and a new road surface will be laid with a road sweeper used to clean the road.

There will be some noise associated with both pieces of work, however this will only take place after 9am. Where possible, we will be using acoustic blankets along the fences to minimise noise and works are due to finish before sunset, so additional lighting is not required. We will also be using a dust suppressant in the area to minimise this dust generated during the works.

Duration of works

Trial holes: Monday 9 May – Friday 13 May 2022

Working hours: 8am – 6pm

Resurfacing: Saturday 14 May – Sunday 15 May 2022

Working hours:
Saturday 9am – 8.30pm
Sunday 9am – 8pm

What to expect

Footway and single lane closure on Old Oak Common Lane for trial holes.

Full road closure and road diversions for resurfacing.

What we will do

We will use best practicable means to minimise any noise by using acoustic blankets and dust suppressants.

Noisy work will not start until after 9am.

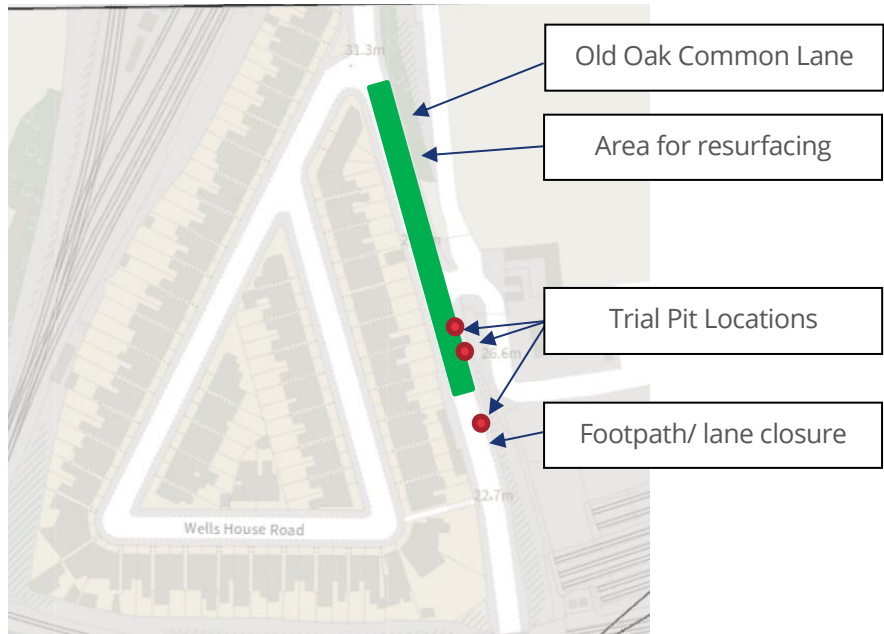
Notice of trial holes and resurfacing on Old Oak Common Lane

www.hs2.org.uk

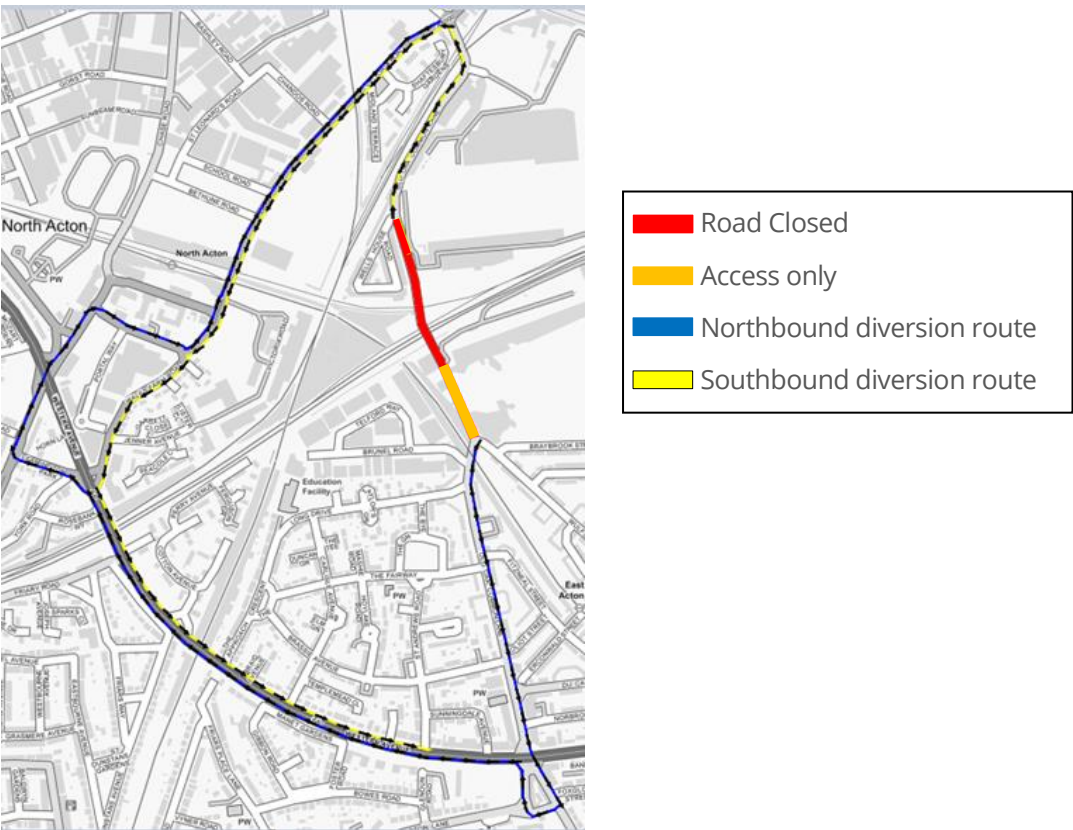
Notification



Location of works



Diversion route



Contact our HS2 Helpdesk team on **08081 434 434**

What else is happening in your area?

www.hs2.org.uk

Contact our HS2 Helpdesk team

Our team is here to listen and respond to your enquiry, complaint or feedback to help us be a good neighbour.

You can contact our Helpdesk team all day, every day of the year on:

Freephone: **08081 434 434**

Minicom: **08081 456 472**

Email: hs2enquiries@hs2.org.uk

Keep up-to-date with your local community website

To find out more about what's happening in your area and receive regular email updates, you can sign up to our local community websites at: www.hs2inyourarea.co.uk.

About our Community and Business Funds

We are offering two funds that are available to local communities and businesses between the West Midlands and London, to help with the disruption caused by our construction work. These are the Community and Environment Fund (CEF) and the Business and Local Economy Fund (BLEF).

The CEF is designed to give communities the opportunity to share in the benefits of HS2. It is an allocated fund that communities are able to apply for, to help to support local projects that aim to improve their local area.

The BLEF is designed to support local economies that may be disrupted by the construction of HS2. BLEF grants are for local business support organisations and local authorities to help maintain business activity in local communities.

For more information about each of these funds, including how to apply, please visit: <https://www.groundwork.org.uk/hs2funds>

If you have a question about HS2 or our works, please contact our HS2 Helpdesk team on 08081 434 434 or email hs2enquiries@hs2.org.uk



Keeping you informed

We are committed to keeping you informed about work on HS2. This includes ensuring you know what to expect and when to expect it, as well as how we can help you.

Residents' Charter and Commissioner

The Residents' Charter is our promise to communicate as clearly as we possibly can with people who live along or near the HS2 route.
www.gov.uk/government/publications/hs2-residents-charter

We also have an independent Residents' Commissioner whose job is to make sure we keep to the promises we make in the Charter and to keep it under constant review. Find reports at:
www.gov.uk/government/collections/hs2-ltd-residents-commissioner

You can contact the Commissioner at:
residentscommissioner@hs2.org.uk

Construction Commissioner

The Construction Commissioner's role is to mediate and monitor the way in which HS2 Ltd manages and responds to construction complaints. You can contact the Construction Commissioner by emailing:
complaints@hs2-cc.org.uk

Property and compensation

You can find out all about HS2 and properties along the line of route by visiting:
www.gov.uk/government/collections/hs2-property
Find out if you're eligible for compensation at:
www.gov.uk/claim-compensation-if-affected-by-hs2

Holding us to account

If you are unhappy for any reason you can make a complaint by contacting our HS2 Helpdesk team. For more details on our complaints process, please visit our website:
www.hs2.org.uk/how-to-complain

Contact us

Contact our HS2 Helpdesk team all day, every day of the year on:

 Freephone **08081 434 434**

 Minicom **08081 456 472**

 Email **HS2enquiries@hs2.org.uk**

Write to:

FREEPOST
HS2 Community Engagement

Website **www.hs2.org.uk**

To keep up to date with what is happening in your local area, visit:
www.HS2inyourarea.co.uk

Please contact us if you'd like a free copy of this document in large print, Braille, audio or 'easy read' format. You can also contact us for help and information in a different language.

HS2 Ltd is committed to protecting personal information. If you wish to know more about how we use your personal information please see our Privacy Notice:
<https://www.gov.uk/government/publications/high-speed-two-ltd-privacy-notice>

Reference number: HS2-MW-BBVS-Ph1-OOC-St-S4-Ex-Mat-21-08/04/2022

High Speed Two (HS2) Limited, registered in England and Wales.
Registered office: Two Snowhill, Snow Hill Queensway, Birmingham B4 6GA.
Company registration number: 06791686. VAT registration number: 888 8512 56