

Contact our HS2 Helpdesk team on **08081 434 434**

# HS2 Update

Aylesbury Area | October 2022

High Speed Two (HS2) is the new high speed railway for Britain. Should you have any questions or enquiries regarding our works, please contact the Helpdesk details of which can be found in this newsletter. We will be keeping our local website **[www.hs2inbucksandbox.co.uk](http://www.hs2inbucksandbox.co.uk)** up to date with information on our works in the local area.



## Update on our works:

Over the next couple of months, you can expect to see the following works in the local area;

- Preparatory works for the Stoke Mandeville Relief road;
- A41 realignment progression;
- Thames Valley Viaduct foundation works commence;
- Excavation, movement and storage of earthworks;
- Enabling works for the A418 overbridge;
- A418 re-alignment preparatory works;
- Underpass for the Princes Risborough to Aylesbury Railway;
- Princes Risborough to Aylesbury Railway overnight deliveries;
- Ground Investigation (GI), topography and Utility works survey works which will require some traffic management;
- UKPN utility connection works around our compound areas which may require some traffic management ;
- Several breaks from highway in the area to allow for our site access – these will include the need for some short duration traffic management;
- Localised vegetation and site clearance which may require traffic management; and
- In 2023 we will be carrying out early works for future water course management activities.

## Join us ...

You can expect to see our mobile visitor centre visiting a local community near you until the end of Autumn visits will resume again next year.

This specialised vehicle will enable us to increase the reach and visibility of our local engagement team, while giving communities a safe, comfortable space where they can find out more about the HS2 project and the work EKFB do.

Please contact the HS2 Helpdesk or visit [hs2.org.uk/events](http://hs2.org.uk/events) for more information on events in your area.

[www.hs2.org.uk/events](http://www.hs2.org.uk/events)



## Update on works

### Abnormal Loads

We are receiving deliveries of abnormal loads to our sites along the HS2 trace.



An abnormal load is a load which due to its weight or dimensions cannot be carried on a conventional goods vehicle and requires a special vehicle and arrangements for its transport. These deliveries often include very large construction machinery such as cranes, piling rigs or beams for a structure.

For the safety of road users and our staff, these abnormal loads require temporary traffic management in the form of a lane closure to provide enough space for the vehicles to safely turn into our construction sites.

Additionally, there may be a requirement to have traffic management on local roads when transporting large abnormal loads such as beams for the overbridges to ensure that there is enough room for safe delivery. We thank you for your co-operation and apologise in advance for any inconvenience.

### Utility works

Last year we removed a section of the Hartwell Wall to facilitate access to the Aylesbury Golf Course. In Spring 2023, we will need to remove a further section of the Wall so we can conduct some utility works and create an access track.

Additionally this winter, Thames Water will be working on the water connection outside of our compound entrance on the A418.

For the safety of road users and our staff, these works may require temporary traffic management in the form of a lane closure.

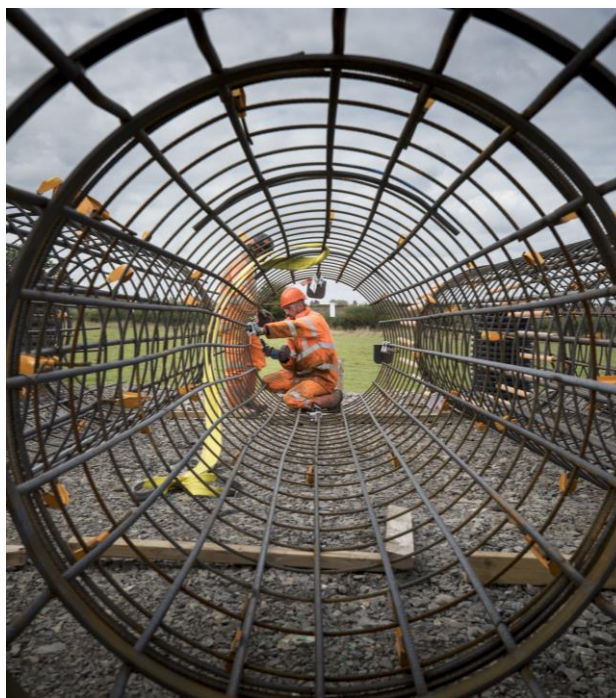
Additionally, in the upcoming months Thames Water will be carrying out further utility works on our behalf on near to the Risborough Road. There may be a temporary interruption to local water supply due to these works.

### Thame Valley Viaduct

Earlier in the Summer, we commenced piling works for the Thames Valley Viaduct, which will be continuing until summer 2023. Piling is the process of creating the foundations for further structural works. We will also be conducting reinforced concrete works for this structure.

In the coming months, we are installing the piers and decking for the viaduct, this work should start in Spring next year and continue until Autumn 2024.

Our final designs for the Thame Valley Viaduct include pioneering pre-fabricated construction methods that will see the 880m-long structure slotted together like a giant Lego set, cutting its carbon footprint by an estimated 66%. Using this pre-casting method, we estimate to improve the construction programme for the Thames Valley Viaduct by 4 months. Some of the pre-fabricated elements may be classed as abnormal loads.



*Piling cages for the Thames Valley Viaduct.*



## Princes Risborough to Aylesbury Railway update

Following on from our South Aylesbury Update issued in late July, we are now carrying out the installation of the steel beams that we have been receiving since the end of August 2022. These works will be followed by the installation of the bridge deck for the PRA Overbridge this Autumn.

Overnight deliveries of aggregate via rail on the Princes Risborough – Aylesbury (PRA) line will continue until October 2022, allowing the railhead to be removed and construction of the embankment to continue in that area.

Work is due to continue on the PRA Underpass later in October, and to start on the PRA Culvert in November. These structures are in the northern part of the site. These works will require nightworks from the end of October 22. Utility diversion works continue along the PRA line.

The PRA realignment is due to be brought into use in Spring 2023 after a 'blockade' period, where the line is stopped and a period of 24hr working takes place which allows the live railway to switch from the existing line onto the new, this will include some earthworks activities, and installation of ballast and rail systems.

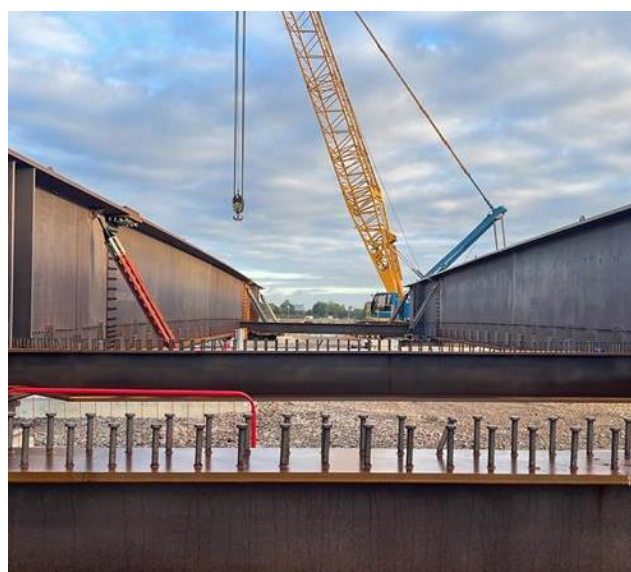
The blockade will be in place for approximately 10 weeks. We have been in communication with the nearby school to reduce our impact on them. As a result, we amended our construction programme so that our works take place outside of school hours. When school is not in session, we will be working 24-hours a day. During this time, Marsh Lane crossing will also be closed and will likely remain as such until Network Rail completes their required upgrade works.



*Aerial view to show the Princes Risborough to Aylesbury site.*



*PRA Line and the works happening in close proximity*



*PRA overbridge steel installation.*



## Waddesdon Community Event

The local EKFB Community teams supported

Haddenham & Waddesdon Community Board event which covers several parishes along the HS2 route.

We recently delivered a key volunteering project at Waddesdon Cricket grounds by creating a hard standing access to disabled toilets supported by HW Martin who helped us clear some overgrown areas for the club.

On the day the teams arrived in the new mobile visitor centre and provided updates to the general public. We had an interactive session with students from local schools about HS2 and the environment, and what a career in engineering could look like.

Flannery's were also on hand with construction equipment to show exactly what EKFB are using to build HS2.

During their demonstrations, children were able to explore and ask questions around these giant machines and we ended the afternoon with a cricket match between EKFB and Waddesdon.



*EKFB and Cllr Irwin at the Community Board event.*



*We were all thrilled with the support we received from EKFB and HS2.*

*It was so valuable for the community and school groups in attendance to have face-to-face conversations. The friendly cricket match at the end of the day was also great fun for all involved. Well done to Waddesdon Cricket Team on its win!*

- **Councillor Paul Irwin**



## Careers with HS2

The construction of HS2 will show the world the very best of British skills, innovation and ambition.

The first phase of the project will employ construction workers, specialist engineers, architects, designers and project managers drawn from across the UK and beyond, using cutting-edge technology and world-leading construction techniques.

Are you ready to be a part of an inclusive and forward-thinking team that welcomes new ideas? You don't have to be an engineer to work in engineering, so come on board, and let's do something exceptional together.

For further information about the HS2 Educational programme please visit our website, [www.hs2.org.uk](http://www.hs2.org.uk).



## A418 Realignment and Aylesbury North Cutting Update

The new A418 realignment is expected to be operational in Autumn 2023 and will carry traffic over the HS2 rail line.

Enabling works to support the main construction of the road realignment are expected to commence in October 2022 include:

- Site access works
- Topsoil stripping
- Localised vegetation clearance
- Utility diversions

The main construction of the realignment is expected to begin in December 2022 and will include works on the A418 Overbridge and earthworks in the form of a cutting, known as the Aylesbury North Cutting. We expect to begin receiving the delivery of abnormal loads for the A418 Overbridge to our new site entrance via the security gatehouse from Autumn 2022.

The Aylesbury North Cutting works will be commencing in October 2022 and our earthworks activities will soon begin moving into the Aylesbury Golf Course, located to the north of the A418.

These activities will include drainage works, the removal of topsoil, and bulk excavation. Earthworks activities will continue for approximately 6 weeks until the end of November before recommencing approximately 6 weeks after Christmas.

As part of the security gatehouse construction for the A418 Compound, we will be installing temporary security lighting at our A418 compound this Autumn. These new lights will help provide safe pedestrian access to our security plaza and compound. The lights will face towards the ground and have variable low brightness settings.

Additionally, we are planning to install further noise mitigation measures in the form of noise barriers that will be near Meadow Way also known as Mayflower Close and there will be a section near the treeline on the A418 to shield lighting for Hartwell Properties.

We will also be installing traffic management to facilitate a right turn out of the new compound entrance. This will be in place from 7am to 7pm on weekdays and from 7am to 2pm on Saturdays while workers are exiting the site.



*The above image shows the piling foundations for the A418 overbridge.*



*A418 overbridge eastern abutments being constructed*



## A41 Realignment Update

In the coming months, there will be some changes to the road layout on the A41. We are conducting the permanent

realignment of the A41 in two phases. The first phase of the A41 realignment will be completed in the Winter of 2022; the second phase will be completed by Summer 2023.

Most of the work will be completed offline to reduce the amount of disruption to local traffic and access via the A41 will be maintained. However, during the first phase, there will be a week closure of Blackgrove Road in Winter 2022 to facilitate utility diversions and new road tie-in.

Prior to this work we will be conducting trial holes for A41 realignment. This will allow us to inspect the utilities underground ahead of the utility diversion works Winter 2022.

## Stoke Mandeville Relief Road

We are currently carrying out early works for the Stoke Mandeville Overbridge. These works include 52 piles at 47m long for the bridge abutments and wing walls. These piling works are currently taking place and will continue into the Winter. The piling work may require 24hr working. In early 2023, we will also be constructing the abutments and pile caps for the bridge.

We currently have a crossing point on Risborough Road to facilitate the movement of site vehicles into our sites, which may continue until early 2023.

However, throughout Autumn we are carrying out early works activities, including the diversion of utilities, that will support the construction of a bailey bridge. This bailey bridge will allow our construction and site traffic to travel over Risborough Road helping reduce our impact on the local area while we construct the relief road.

Earthworks for the relief road will begin in Spring 2023 and will include the creation of embankments, landscape bunds and the movement of material.

Moving into Summer 2023 we will be expecting the delivery of the steel beams to construct the bridge. Once the beams are installed, we will then continue with the installation of the deck, parapets and construction of embankments either side of the bridge. These works will continue into the following year and the bridge is anticipated to be operational in early Autumn 2024.

Once the Stoke Mandeville Relief Road is operational, the A4010 Risborough Road will become a pedestrian underpass. All vehicular access will be via the new relief road.

*Works progressing for the A41 overbridge*



*central piers of the viaduct will look like.*





## Forest School project

Booker Park School is a SEND primary school located in the heart of an impacted community who provides specialist support for students with severe mental and learning disabilities.

The school's facilities are used by its 226 pupils, 315 staff members, and families of pupils. The Director of the school explained that everything they do is based on the use of multi-sensory activities which have been proven to assist in improving concentration and the motivation to learn.

The school approached our Social Value team with ideas about how they could utilise an unused, heavily overgrown space in their school to create an outdoor learning area.

This summer, we were able to transform their vision of creating a forest school, resulting in an alternative learning space where students can develop positive relationships with the natural world. In keeping with the teaching philosophy of the school, sensory play items using natural elements have been incorporated to facilitate learning and communication.

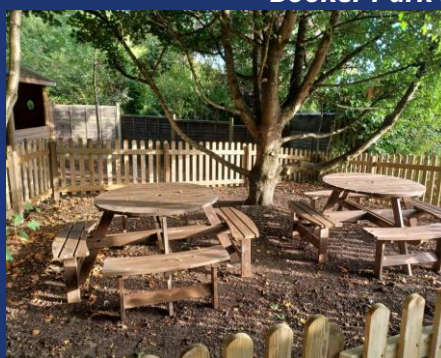
Our collaboration has resulted in the creation of a unique learning environment for students. Several of our contractors helped create the project a big thank you goes to EKFB, ATM Fencing, HW Martins, and Westcoast Haulage Limited.

We are very proud of what we have been able to accomplish together.

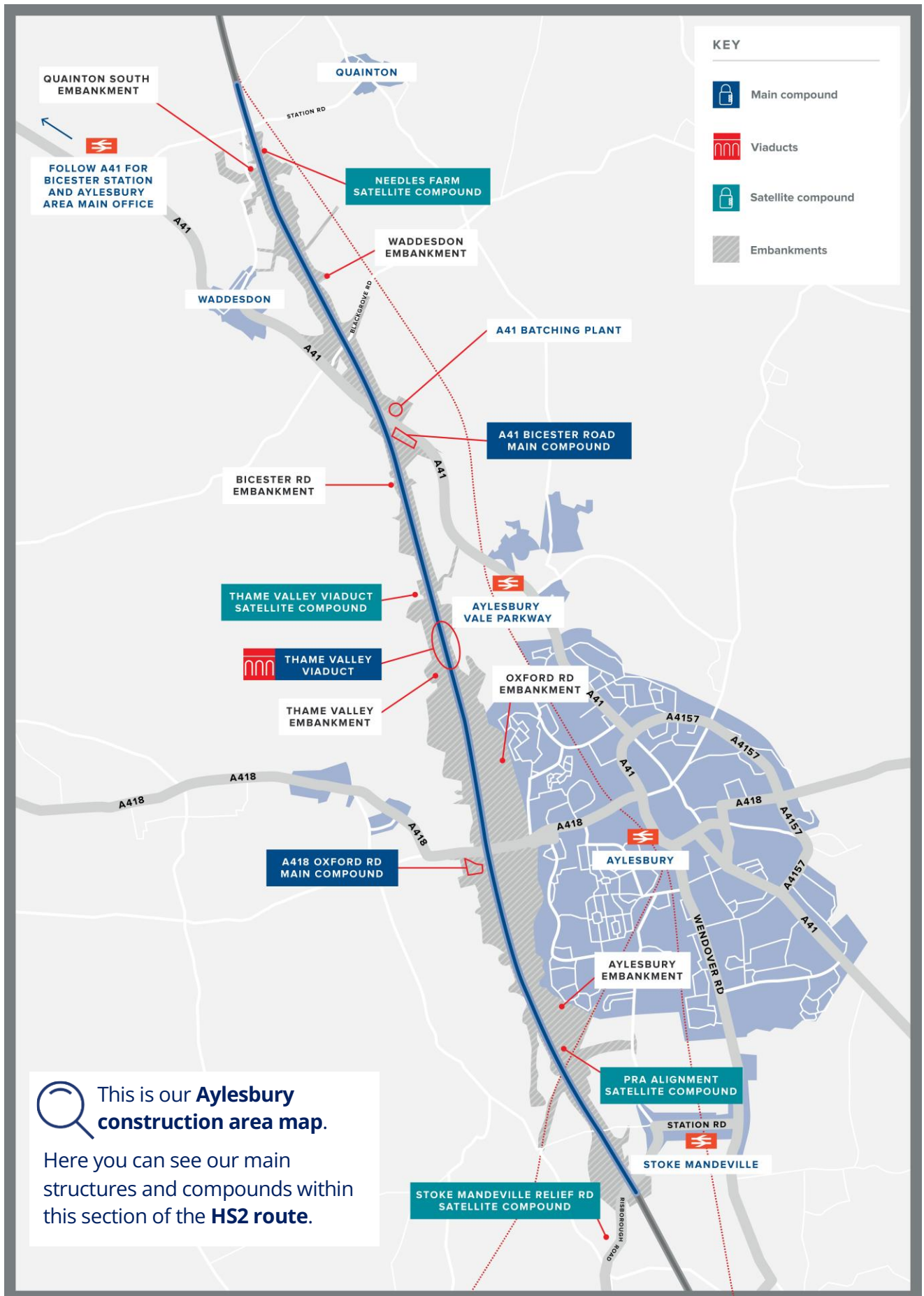


*Thank you for all of your hard work in delivering our forest school. This will have such a hugely positive impact on the lives and learning of hundreds of children with special needs*

- **Booker Park School**



*The above images show just a few elements of the Forest school including the sensory hopscotch path, the willow weave den, the music wall, picnic benches and tic tac toe game.*





## Our Mobile Visitor Centre



Coming to your area soon...

To find out our upcoming locations, please visit our dedicated events page:

[hs2.org.uk/events/mobile-information-centre-dates-and-venues/](https://hs2.org.uk/events/mobile-information-centre-dates-and-venues/)

Or scan me!



In March 2022 we launched our Mobile Visitor Centre, allowing us to bring engagement to your area.

We will visit your local area every few months to enable you to drop-in and ask questions or find out more about the project. We will have a range of experts on hand, from engagement managers to engineers.

## Quainton Primary School



In September, we organised a volunteer day at Quainton Primary School. The team spent two days revitalising Quainton Primary School in Aylesbury by painting 7 classrooms, covering close to 300 square metres!

This volunteering event is the latest in our ongoing commitment to Quainton Primary School. Members of the team previously visited the school to transform their outdoor area into a haven for wildlife and a great space for outdoor learning for students to enjoy for years to come.

Giving back to the community is important to HS2 which is why we offer a volunteering programme to put our team's skills and experience to good use as well as funding opportunities for affected communities, you can find out more information regarding funding on the Hs2 website:

[www.hs2funds.org.uk](https://www.hs2funds.org.uk)



*Representatives from HS2 and EKFB who painted in Quainton Primary school*



*Before and after picture of the fencing at Quainton Primary School.*

# Keeping you informed

We are committed to keeping you informed about work on HS2. This includes ensuring you know what to expect and when to expect it, as well as how we can help.

## Residents' Charter and Commissioner

The Residents' Charter is our promise to communicate as clearly as we possibly can with people who live along or near the HS2 route.

We also have an independent Residents' Commissioner whose job is to make sure we keep to the promises we make in the Charter and to keep it under constant review. Find reports at: [www.gov.uk/government/collections/hs2-ltd-residents-commissioner](http://www.gov.uk/government/collections/hs2-ltd-residents-commissioner)

You can contact the Commissioner at: [residentscommissioner@hs2.org.uk](mailto:residentscommissioner@hs2.org.uk)

## Construction Commissioner

The Construction Commissioner's role is to mediate and monitor the way in which HS2 Ltd manages and responds to construction complaints. You can contact the Construction Commissioner by emailing: [complaints@hs2-cc.org.uk](mailto:complaints@hs2-cc.org.uk)

## Property and compensation

You can find out all about HS2 and properties along the line of route by visiting: [www.gov.uk/government/collections/hs2-property](http://www.gov.uk/government/collections/hs2-property)  
Find out if you're eligible for compensation at: [www.gov.uk/claim-compensation-if-affected-by-hs2](http://www.gov.uk/claim-compensation-if-affected-by-hs2)

## Holding us to account

If you are unhappy for any reason you can make a complaint by contacting our HS2 Helpdesk team. For more details on our complaints process, please visit our website: [www.hs2.org.uk/how-to-complain](http://www.hs2.org.uk/how-to-complain)

## Contact Us

Contact our HS2 Helpdesk team all day, every day of the year on:

 Freephone **08081 434 434**

 Minicom **08081 456 472**

 Email **[HS2enquiries@hs2.org.uk](mailto:HS2enquiries@hs2.org.uk)**

Write to:

**FREEPOST**

**HS2 Community Engagement**

Website **[www.hs2.org.uk](http://www.hs2.org.uk)**

To keep up to date with what is happening in your local area, visit: **[www.HS2inyourarea.co.uk](http://www.HS2inyourarea.co.uk)**

**Please contact us if you'd like a free copy of this document in large print, Braille, audio or easy read. You can also contact us for help and information in a different language.**

HS2 Ltd is committed to protecting personal information. If you wish to know more about how we use your personal information please see our Privacy Notice <https://www.gov.uk/government/publications/high-speed-two-ltd-privacy-notice>

**Reference number:** HS2-MW-EK-Ph1-Ar-Ce-C1-Prog-works-10-19/10/2022  
1MC12-EKF-IN-NTE-CS04-000075

High Speed Two (HS2) Limited, registered in England and Wales.  
Registered office: Two Snowhill, Snow Hill Queensway, Birmingham B4 6GA.  
Company registration number: 06791686. VAT registration number: 888 8512 56