

HS2

ECRG Presentations & Slides

22nd March 2022

Agenda

Time	Topic	Presenter
17:00	1. Welcome and Introductions	Chair
17:10	2. Coordination of works	Mark Burling
17:15	3. Bus stop closures	Mark Burling
17:20	4. Adelaide Road Schedule 17 application	Amy Allen
17:30	5. No net loss of bio-diversity in Camden	David Demolder. James New & Greg Hitchcock
17:45	6. Engagement approach	Maddelyn Sutton/Ross Pearson
17:50	Break	Chair
18:00	7. Action items review	David Demolder
18:05	8. Public Engagement	Nina Radford
18:15	9. HS2 Update	
-	HS2	Maddelyn Sutton/Ross Pearson
-	MaceDragados	David Demolder
-	Network Rail update	Tom Duckmanton/Emily Hanlon
-	SCS	Lee Harman
18:30	10. Community Questions/AOB	Chair
18:45	11. Minutes of the last meeting and Matters Arising	Chair
18:50	12. Meeting format for June	David Demolder
	Chair's Closing Remarks	Chair

HS2

1. Welcome and introductions

Dr Karl Mackie CBE

HS2

2. Coordination of works

Mark Burling

Coordination of works

It has been reported that there have been multiple works in the Delancey Street/Parkway area. These included ones by UKPN which were not known about by the community.

To NOTE the previously circulated slides on:

- Coordination of works
- Role of Camden Traffic Liaison Group, Camden Coordination Group and Utilities Coordination Meeting and prioritisation of works.

To receive additional information.

Questions.

Coordination of works

- HS2 works are co-ordinated through the Traffic Liaison Group meetings and Camden Co-ordination Group meetings. The output of these meetings are discussed at the Camden Community Traffic Working Group.
- HS2 works are uploaded to the DFT StreetManager system in advance of works commencing on site. All works are co-ordinated with other contractors' works through this system. This allows Highway Authorities to coordinate all works on the network.
- Through this process and discussion opportunities for co-working and collaborative planning are discussed to reduce impacts to the network and where possible prioritise works. This does rely on all contractors in the area notifying their works on the system in good time.

The UKPN works referred to are non-contestable works by UKPN on behalf of SCS. UKPN has just started to provide detail of its works at Traffic Liaison Group and Camden Coordination meetings. This will aid coordination of works on the ground with all HS2 works joint ventures, third parties (i.e. UKPN), HS2 and stakeholders.

HS2

3. Bus stop closures

Mark Burling

Bus stop closures

To NOTE the previously circulated slide covering:

- Bus stops currently closed
- Considerations when seeking to relocate bus stops on a temporary basis.

Questions.

Bus stop closures

- There is currently one suspended bus stop which is on Hampstead Road. This will reopen in mid-April.
- Bus stops are only closed when absolutely necessary and we seek to minimise the need and duration.
- TfL have to agree closures and will consider providing an alternative using its Accessible Bus Stop Design Guidance (see extract to the right)
<https://content.tfl.gov.uk/bus-stop-design-guidance.pdf>

Temporary bus stops

Temporary bus stops are provided when permanent stops are out of use, for example because of roadworks or diversions. They should be located as close as possible to the permanent stops, in positions that are safe and do not cause undue disruption and are accessible. Signage at the closed bus stop should indicate the location of the nearest open bus stop.

HS2

4. Adelaide Road Schedule 17 application

Amy Allen

Adelaide Road Schedule 17 application

To NOTE the previously circulated slides covering:

- The consultation information for the head house relevant to materials and the context of the area.
- The current status of the Adelaide Road application.

Questions.

Adelaide Road headhouse design

Overview of public engagement in September 2021

HS2 public engagement period 1 - 30 September; HS2 held public engagement on the design of the Adelaide Road Vent Shaft throughout September 2021. Two virtual webinars were held, where a presentation was talked through by the Design team and questions were encouraged. A face-to-face event was held at Swiss Cottage Library with 15 A0-sized information boards detailing the proposed design, and SCS & HS2 Engagement colleagues were accompanied by Design, Environment and Traffic & Highways colleagues to engage with the public and answer questions. This information was also made available online 1 - 30 September, with an accompanying survey asking the public for feedback on four key questions.

Revised design characteristics; Since the previous design, shared in public engagement in Summer 2018, the architectural design of the headhouse was developed to better integrate into its setting on the Adelaide Road embankment.

Revised design characteristics include: a reduced area of hard standing to have a courtyard feel; breaking up the mass of the ventilation stack into two slender chimneys; set into the embankment to minimise visual impact and further development of plans for green roofs.

Headhouse materials; The materials palette considers the requirements of the Land Design Approach to ensure the *"finishes and materials will suit local character"* and attention to detail is considered to *"help fit these components in well with particular rural or urban locations"*.

A photographic survey was carried out to help understand the existing local context and provide examples of materiality and colours.

The following slides have been extracted from the Design engagement presentation shared in the webinar events on 9 and 13 September 2021.

SKANSKA HSB STRABAG Working in partnership with HS2

We would like to invite you to our events about the design of the Adelaide Road headhouse and compound

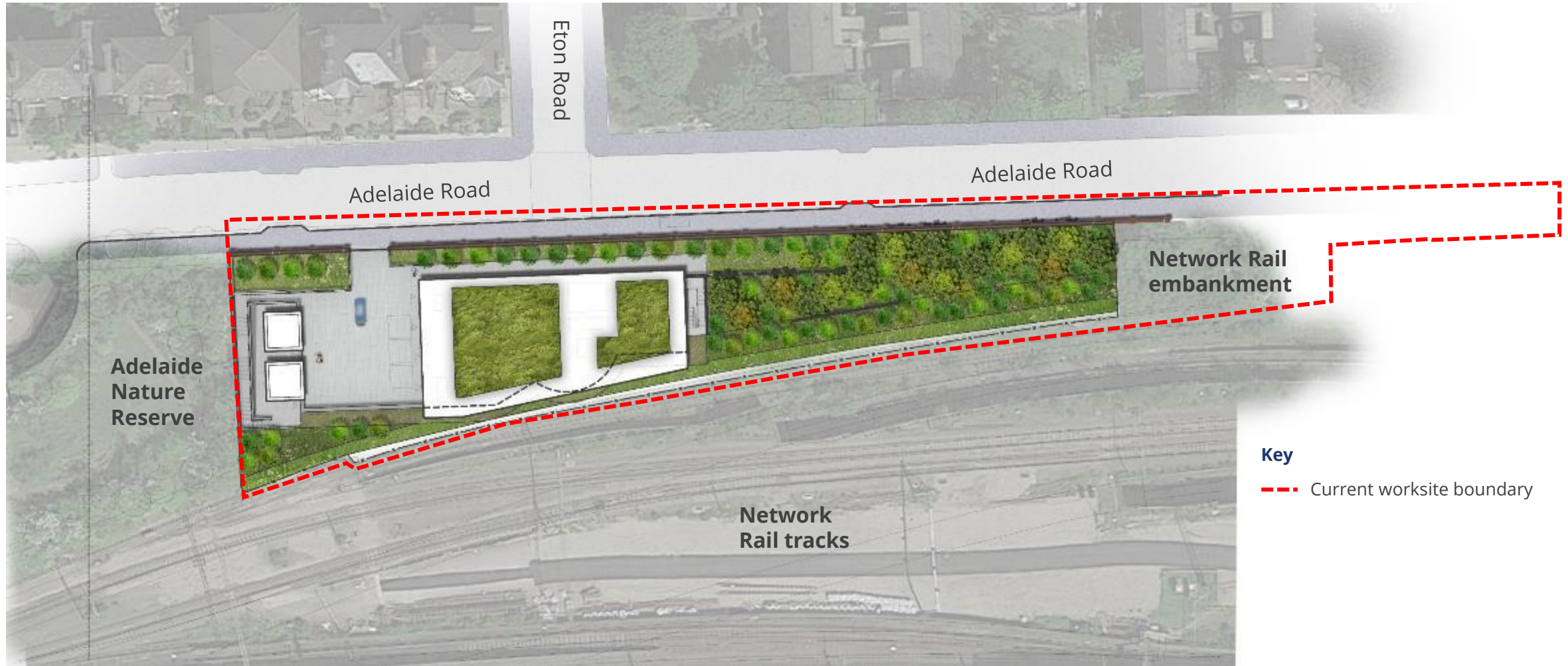
High Speed Two (HS2) is the new high speed railway for Britain. We will be holding online information events on 9 and 13 September and a face-to-face engagement event on 15 September about the Adelaide Road headhouse and compound in Camden. We are seeking your views about the design. At these events you will find out more about:

- the design of the headhouse and compound
- our future landscaping plans

There will be an opportunity to ask the team questions and to give us your feedback.

Location

The Adelaide Road site is located in the London Borough of Camden, between Chalk Farm Road and Primrose Hill Road. The site sits in the Network Rail embankment area. Our site does not include the Adelaide Nature Reserve.



*Slide extracted from Design engagement presentation shared in webinar events on 9 and 13 September 2021

Overview of a vent shaft and headhouse

The vent shaft and headhouse are key components in any rail infrastructure. We will build a vent shaft and headhouse at the Adelaide Road site.

What is a vent shaft?

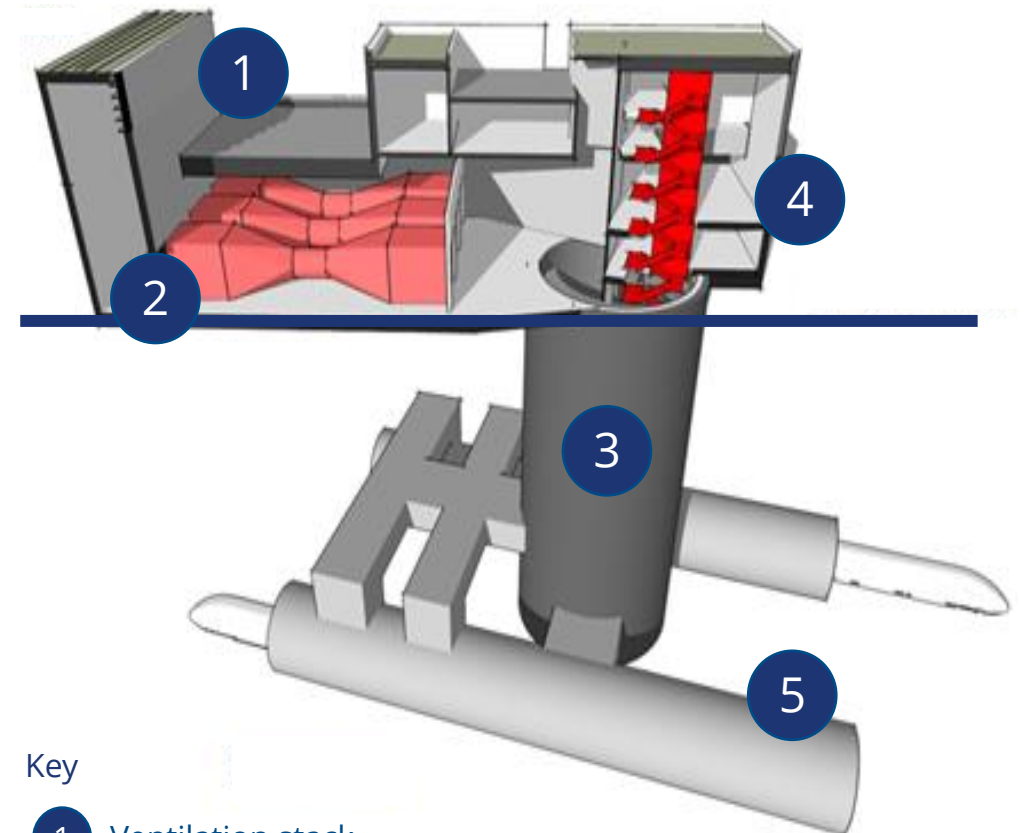
A vent shaft, or ventilation shaft is a vertical opening that connects the tunnels to the surface and open air.

What is a headhouse?

The headhouse is the building on top of the vent shaft which contains the fire control and ventilation systems for the railway tunnels below. The headhouse will include a fan room.



This is a visualisation of the headhouse from the Network Rail tracks and King Henry's Road



Key

- | | |
|---------------------|--------------------------|
| 1 Ventilation stack | |
| 2 Fan room | 4 Emergency intervention |
| 3 Shaft | 5 Running tunnels |

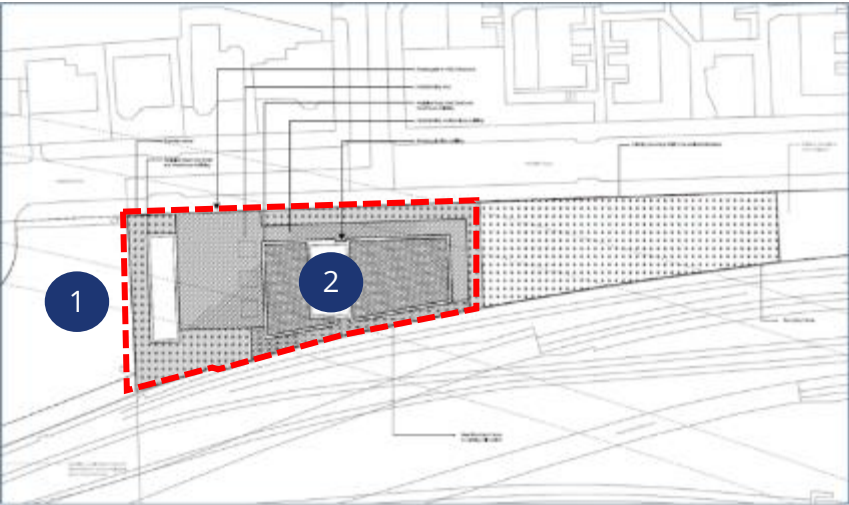
*Slide extracted from Design engagement presentation shared in webinar events on 9 and 13 September 2021

Previous design

Here you can see our previous design of the Adelaide Road headhouse and compound. We engaged with the community about the design in summer 2018.

Key

- Adelaide Road compound
- 1 Adelaide Nature Reserve
- 2 Headhouse



Previous materials



Previous headhouse design



*Slide extracted from Design engagement presentation shared in webinar events on 9 and 13 September 2021

Current design

Revised design characteristics from previous design

- Set back to minimise industrial street frontage
- Set into the embankment to minimise visual impact
- Single storey building from Adelaide Road side
- Double storey building from railway side
- Headhouse embedded into landscape
- Further development of plans for green roofs
- Boundary treatments to be confirmed



Key

- | | | |
|---|-----------------------|----------------------------|
| 1 Site entrance | 5 Green roof | 9 Adelaide Road |
| 2 Stairs | 6 Headhouse | 10 Adelaide Nature Reserve |
| 3 Ventilation stacks | 7 Green buffer | |
| 4 Courtyard /
hardstanding as small
as possible | 8 Network Rail tracks | |

*Slide extracted from Design engagement presentation shared in webinar events on 9 and 13 September 2021

Local materials and colours

We have carried out photographic surveys of materials and colours in the local area



Principle building materials

Brick / Painted render

Principle paving materials

Concrete slab paving / Asphalt / Granite kerbs

Principle boundary treatments

Brick walls / Timber fencing

Principle vegetation types

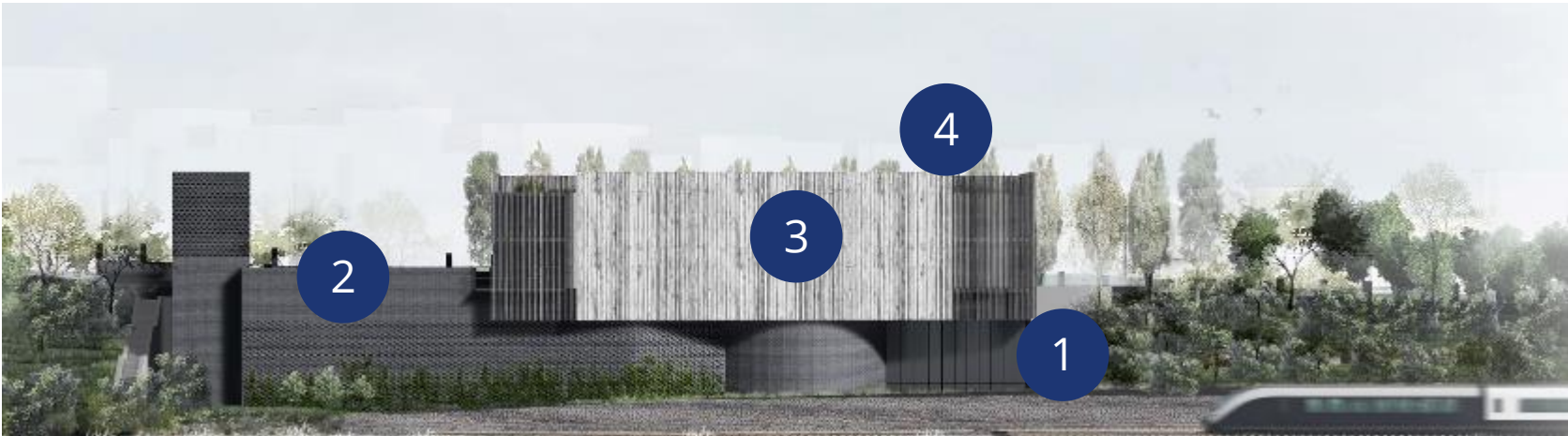
Mature street trees / Ornamental / amenity planting / Woodland / scrub along rail corridor

*Slide extracted from Design engagement presentation shared in webinar events on 9 and 13 September 2021

Headhouse appearance

Here you can see the materials proposed in our design for the Adelaide Road headhouse.

The materials proposed in our design for the Adelaide Road headhouse are timber, metal, concrete and brickwork. We are also planning to install a green roof.



This is a visualisation of the headhouse from the Network Rail tracks and King Henry's Road

1



Metal

Dark grey metal panels and louvers

3



Timber

Accoya or similar modified softwood naturally weathered to silver grey colour

2



Brick

Engineering brick for walls, retaining walls and pavements in dark grey or similar

4



Green Roof

Intensive Green Roof with deep growing substrate and biodiverse planting of grasses, herbaceous and shrub planting

*Slide extracted from Design engagement presentation shared in webinar events on 9 and 13 September 2021

*The landscape elements are indicative only – please refer to the following slides showing our landscape plans.

Headhouse design

Here you can see a visualisation of the headhouse showing a view from the eastern end of Adelaide Road and the Network Rail embankment.

1



*Slide extracted from Design engagement presentation shared in webinar events on 9 and 13 September 2021

*The landscape elements are indicative only – please refer to the following slides showing our landscape plans.

Headhouse design

Here you can see a visualisation of the headhouse showing a view from the western end of Adelaide Road and the Adelaide Nature Reserve.

2



*Slide extracted from Design engagement presentation shared in webinar events on 9 and 13 September 2021

*The landscape elements are indicative only – please refer to the following slides showing our landscape plans.

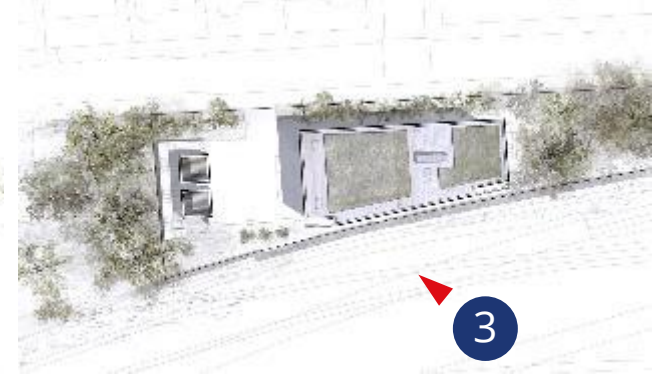
Headhouse design

Here you can see visualisations of the headhouse showing a view from the south of Adelaide Road (from the railway tracks and King Henry's Road properties)

3



3



3



*Slide extracted from Design engagement presentation shared in webinar events on 9 and 13 September 2021

*The landscape elements are indicative only – please refer to the following slides showing our landscape plans.

Headhouse design

Here you can see a visualisation of the headhouse showing the view of the view from Adelaide Road with a grey or red boundary wall



Option 1: Grey brick wall

4



Option 2: Red brick wall

4



*Slide extracted from Design engagement presentation shared in webinar events on 9 and 13 September 2021

*The landscape elements are indicative only – please refer to the following slides showing our landscape plans.

Lighting plans

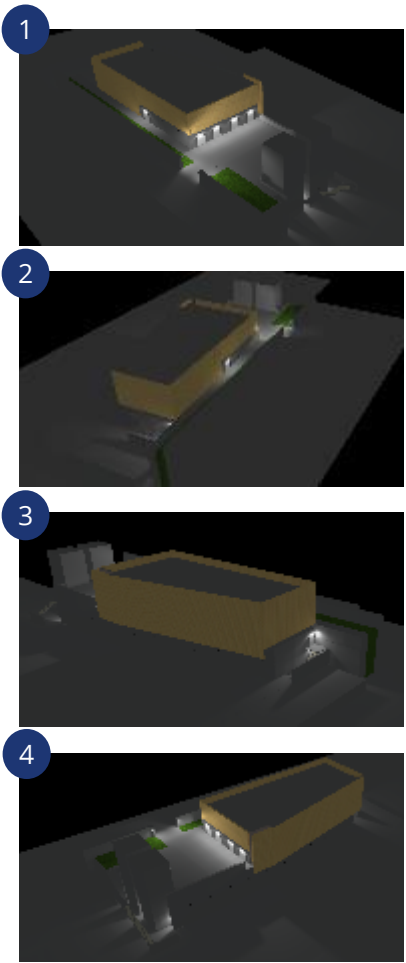
Here you can see our future lighting plans



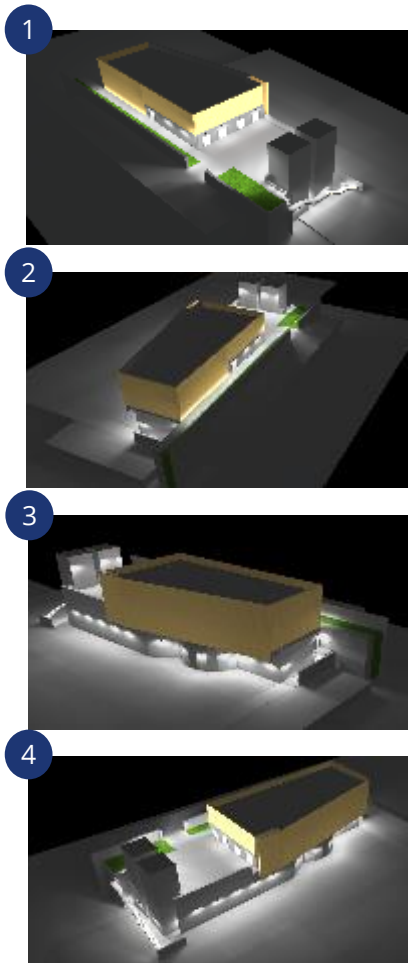
Key

- ▼ Headhouse Access Point
- Orange, Green, Pink, Yellow Lighting zones

Unoccupied compound



Occupied compound



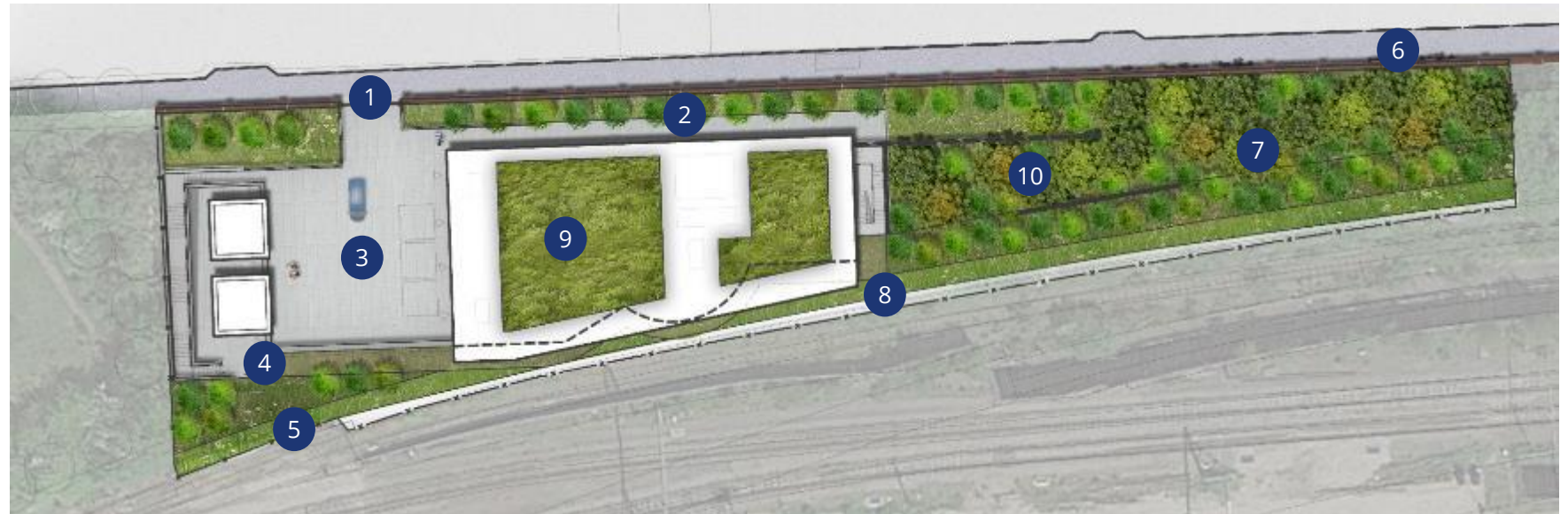
*Slide extracted from Design engagement presentation shared in webinar events on 9 and 13 September 2021

Landscape design

Here you can see our landscape plans

Key

- 1 Compound entrance
- 2 Linear tree planting
- 3 Concrete block paving
- 4 Reinforced grass
- 5 Trees and scrub habitat planting
- 6 Boundary wall surrounding the site
- 7 Woodland planting
- 8 Grassland planting
- 9 Green roof
- 10 Vegetated retaining wall or Bio-Active self-healing concrete wall



Green Roof



Linear tree planting



Broadleaved woodland

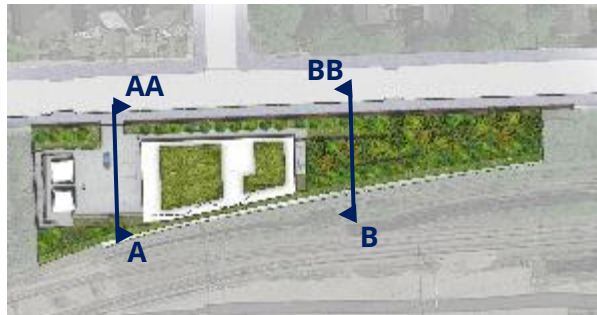


Species rich grassland

*Slide extracted from Design engagement presentation shared in webinar events on 9 and 13 September 2021

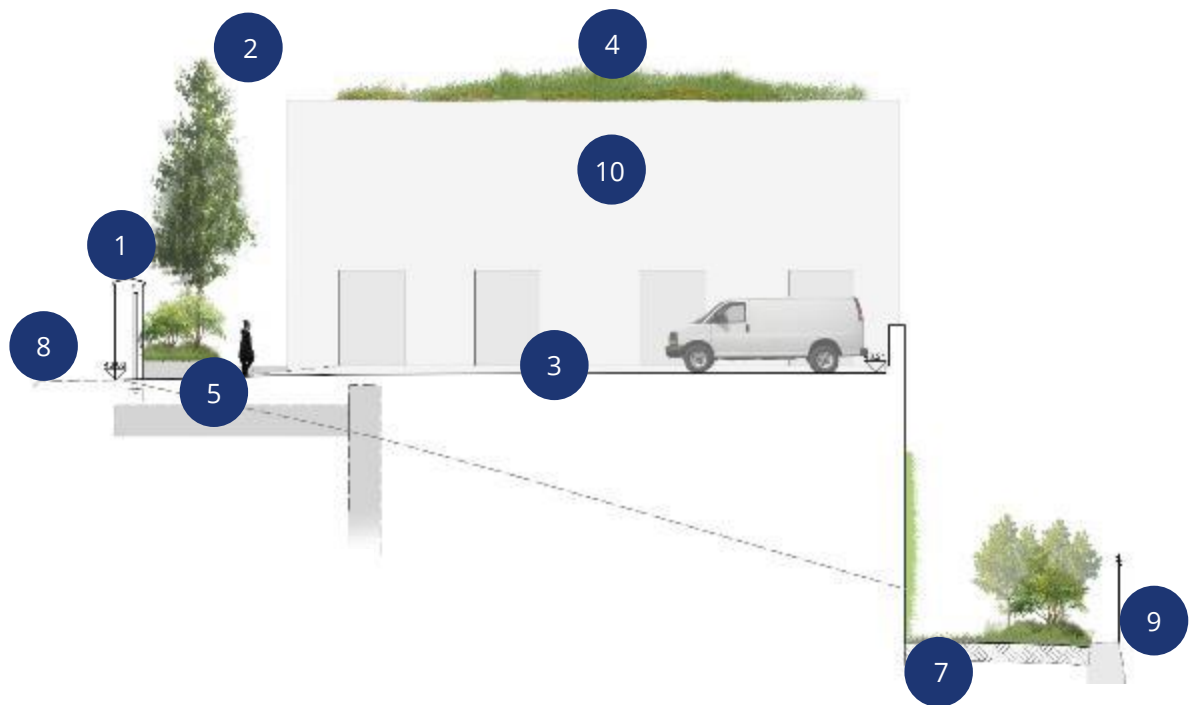
Landscape design

Here you can see our future landscape plans from different viewpoints

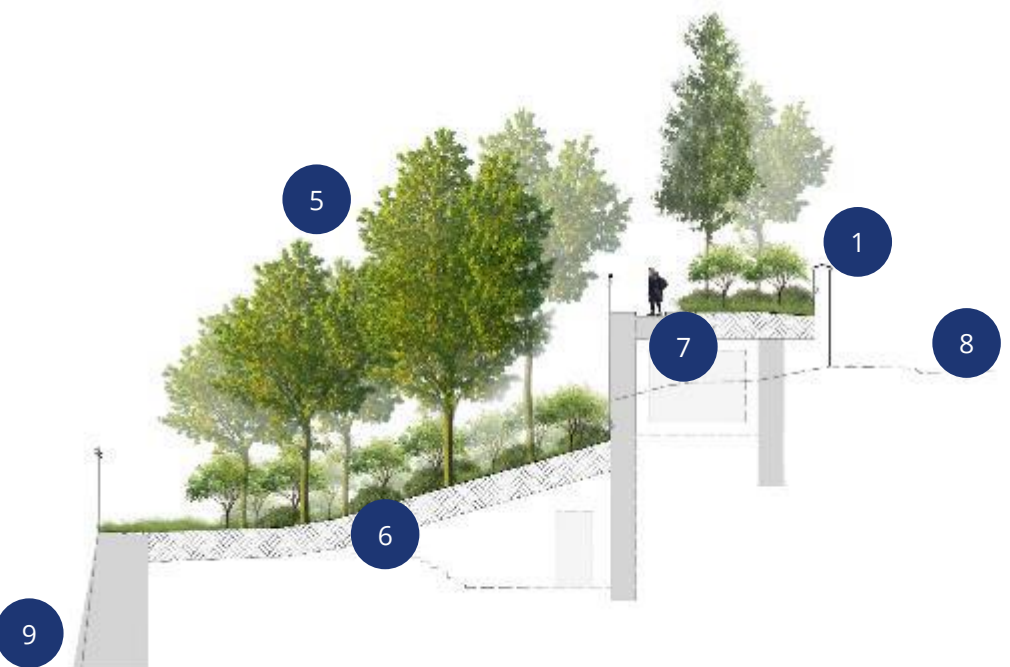


- Key**
- 1 2.8m high boundary wall
 - 2 Linear tree planting
 - 3 Manoeuvring area
 - 4 Green roof on headhouse
 - 5 Tree and scrub planting
 - 6 Woodland planting
 - 7 Access corridor
 - 8 Adelaide Road
 - 9 Network Rail tracks
 - 10 Headhouse

Section A-AA is a section viewpoint from the Adelaide Nature Reserve



Section B-BB is a section viewpoint from the Network Rail embankment



*Slide extracted from Design engagement presentation shared in webinar events on 9 and 13 September 2021

Landscape design

Here you can see our plans for green roofs on the headhouse

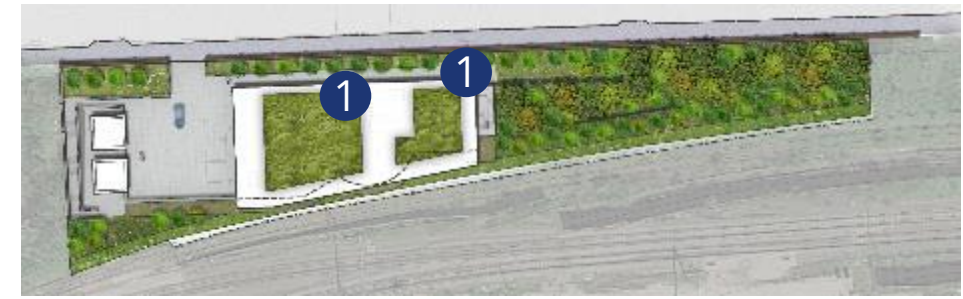
Type A: Deep substrate

With more depth of growing substrate, it can support a greater diversity of plants.



Type B: Rocky substrate

With shorter flowering plants will be beneficial to a range of invertebrate species and birds. Sand pockets/gravel beds, log piles, and bug hotels will also help creating more habitats for insects.



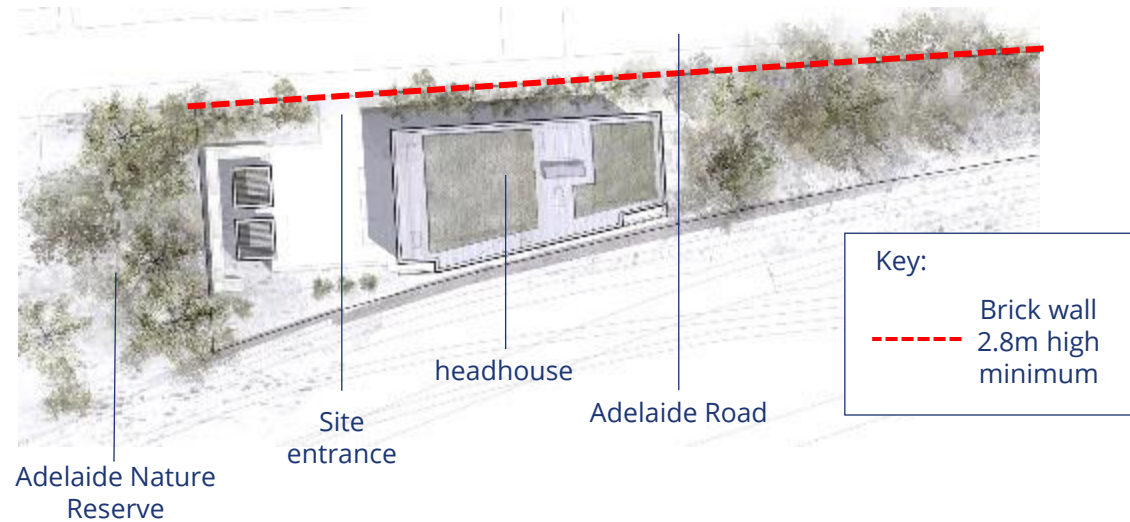
Key

- 1 Green roof location

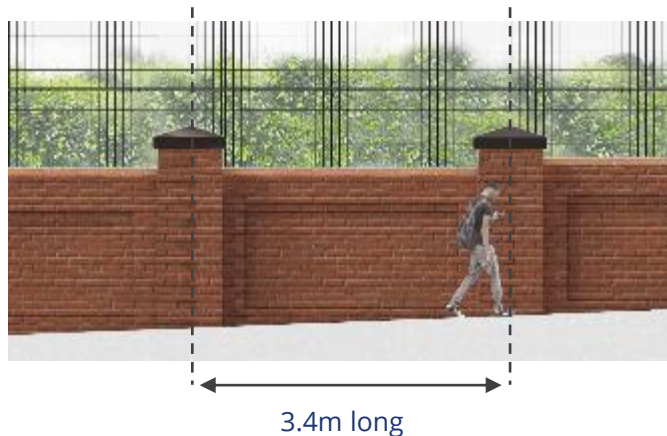
*Slide extracted from Design engagement presentation shared in webinar events on 9 and 13 September 2021

Adelaide Road boundary wall

Here you can see our plans to rebuild the boundary wall on Adelaide Road.

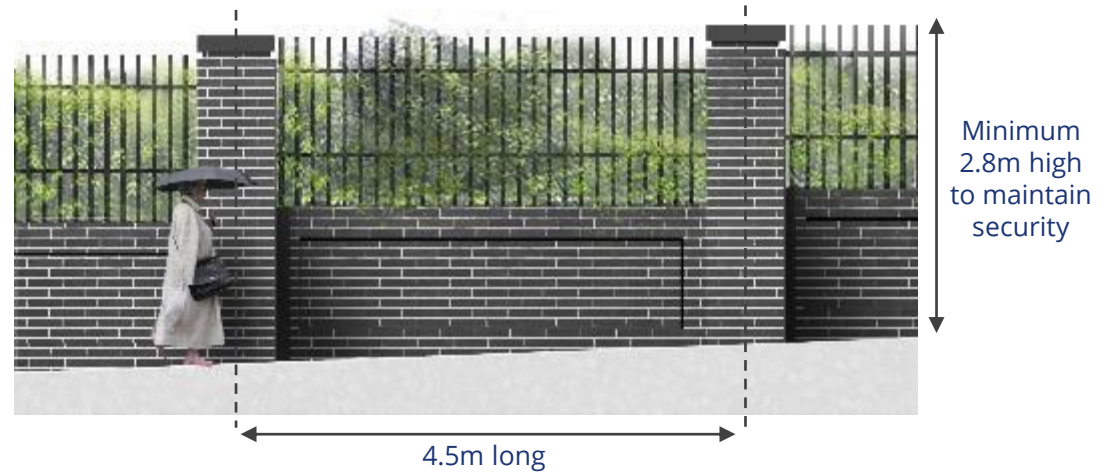


Previous Adelaide Brick boundary wall

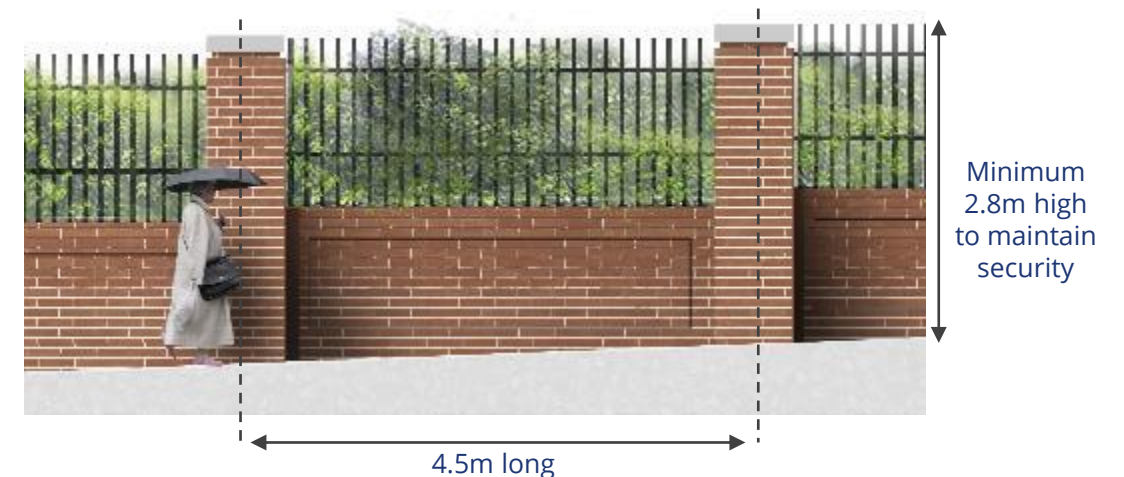


Options for new Adelaide Road boundary wall

Option 1 – low wall with piers and railings (grey brick) on Adelaide Road



Option 2 – low wall with piers and railings (red brick) on Adelaide Road



*Slide extracted from Design engagement presentation shared in webinar events on 9 and 13 September 2021

We would like to hear from you

Do you think the materials used for the future headhouse will help integrate the building with the local context?

Do you think tree and shrub planting to partially screen the headhouse building from Adelaide Road is a good idea?

The proposal is to incorporate railings into the boundary wall to increase visibility of the greenery behind. Do you agree with this approach?

We are proposing a red or grey brick wall. Which colour of brick do you think is most appropriate for the boundary wall?

Have your say

Please provide us with your feedback by 30 September 2021

You can do this by:

- Completing our survey at **[HS2incamden.co.uk](https://hs2incamden.co.uk)**
- Emailing **hs2enquiries@hs2.org.uk**
- Phoning the HS2 Helpdesk on 08081 434 434
- Using our minicom service on 08081 456 472
- Freepost SCS RAILWAYS

*Slide extracted from Design engagement presentation shared in webinar events on 9 and 13 September 2021

Next steps



*Slide extracted from Design engagement presentation shared in webinar events on 9 and 13 September 2021

Adelaide Road Key Design Engagement

Overview of You said, We did update on feedback received engagement in November 2021

You said, We did; following the public engagement throughout September 2021, local residents were invited to attend virtual engagement events in late-November 2021 to see how community feedback had been considered and changes to the final design ahead of submission to Camden Council. Two virtual webinars were held, where a presentation outlined the 'You said' - key feedback from the public and 'We did' – how the Design had been influenced as a result.

How the feedback was reviewed; responses to each question raised during September's public engagement was collated. Respondents were also given the opportunity to explain the reasons behind each question response through an option to provide elaboration if necessary. Working closely with HS2, SCS reviewed the overall list of responses to identify common themes of what residents liked or disliked about the design and, importantly, what changes are being suggested.

The process of review relied principally on relevance of the comment towards the grounds for determination under Schedule 17 of the HS2 Act, and to the questions being asked. But even so, valuable feedback was provided, such as the desire amongst the community for green walling, which will inform future development of the landscaping proposals.

The functionality of the scheme as a vent shaft remains a priority for HS2 and this has influenced the ability to incorporate some suggestions received. Similarly, the need to maintain site security, surveillance and avoid vandalism are important considerations which have influenced the design response, together with cost.

The following slides have been extracted from the Design engagement presentation shared in the webinar events on 25 and 29 November 2021.

SKANSKA CESTUM STRABAG Working in partnership with HS2

We would like to invite you to our online events about the design of the Adelaide Road headhouse and compound

High Speed Two (HS2) is the new high speed railway for Britain. We will be holding online information events on 25 and 29 November about the Adelaide Road headhouse and compound in Camden. At these events you can find out more about:

- our final design before we seek approval from Camden Council and
- how we have considered community feedback

Our team of experts will provide a presentation at the start of each event, which will be followed by a question and answer session.



Public feedback

In September 2021, we held public engagement events and you gave us feedback on four questions about our future design of the Adelaide Road headhouse and compound. These questions are show below:

1

Do you think the materials used for the future headhouse will help integrate the building with the local context?

2

Do you think tree and shrub planting to partially screen the headhouse building from Adelaide Road is a good idea?

3

The proposal is to incorporate railings into the boundary wall to increase visibility of the greenery behind. Do you agree with this approach?

4

We are proposing a red or grey brick wall. Which colour of brick do you think is most appropriate for the boundary wall?

*Slide extracted from You Said, We Did presentation shared in webinar events on 25 and 29 November 2021

Headhouse appearance

1

Do you think the materials used for the future headhouse will help integrate the building with the local context?

You said: The materials should be hidden behind a green wall and do not keep in line with the local area

We did:

We have considered incorporating green walling to maximise natural screening as far as practicable. Green walling is incorporated into brick walling found on the southern elevation where it would not conflict with CCTV and lighting requirements.

This feedback has been noted by the design team and will be considered during the final submission to Camden Council.

2

Do you think tree and shrub planting to partially screen the headhouse building from Adelaide Road is a good idea?

You said: We would like screening on all sides and replanting of the trees and vegetation which have been removed.

We did:

Tree and shrub planting has been developed further to enhance screening of the headhouse building from Adelaide Road. This includes the use of new planting species to create more natural looking screening.

We plan to enhance the amount of green walling and natural screening as far as practicable.

The visualisations on the next slide show the proposals at a series of future years with the development of the natural screening evident over time.

*Slide extracted from You Said, We Did presentation shared in webinar events on 25 and 29 November 2021

Headhouse appearance



This is a visualisation of the previous design for the headhouse and compound from Adelaide Road.



This is a visualisation of the updated design featuring additional vegetation of the headhouse and compound from Adelaide Road

*Slide extracted from You Said, We Did presentation shared in webinar events on 25 and 29 November 2021

Adelaide Road boundary wall

3

The proposal is to incorporate railings into the boundary wall to increase visibility of the greenery behind. Do you agree with this approach?

We appreciate the community views about the appearance of the brick wall and this is being considered by our design team as we further develop the final design of the wall. We believe the inclusion of railings will help to expose more of the green planting/screening and soften the visual impact along Adelaide Road. The design of the wall will be the subject to ongoing discussions and we will carry out further engagement about this.

Previous boundary wall and fence on Adelaide Road



Proposed new boundary wall and fence which could be on Adelaide Road



*Slide extracted from You Said, We Did presentation shared in webinar events on 25 and 29 November 2021

Adelaide Road boundary wall

4

We are proposing a red or grey brick wall. Which colour of brick do you think is most appropriate for the boundary wall?

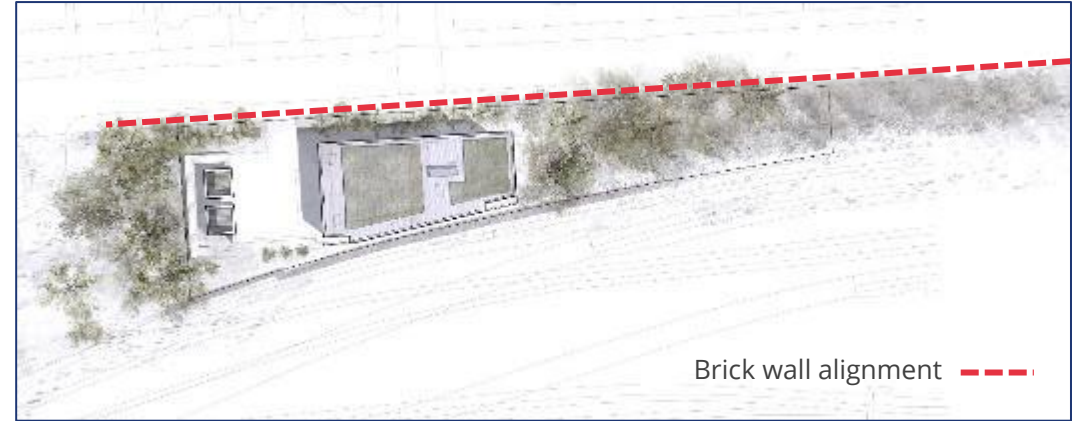
You said: Rebuild the brick wall to its original colour and reuse the bricks from the previous Victorian wall.

We did:

Feedback from the community and also London Borough of Camden has been clear in stating a preference for red brick.

We have listened to this feedback and the design has been modified accordingly to include for a red brick wall along the Adelaide Road frontage.

The final design of the brick wall will be progressed at a later stage. We will engage further with you about this in the future.



This is a visualisation of the proposed brick wall on Adelaide Road

Adelaide Road Schedule 17 application

Current status of the Adelaide Road application

The Schedule 17 Plans & Specifications submission will seek approval of the following components of above ground development:

Buildings - headhouse and fan rooms;

Fences and walls - security fences and Adelaide Road wall;

Earthworks - hard standing area, embankment, and auto-transformer station compound (location only);

Road vehicle parking – maintenance vehicle;

& Artificial lighting – lighting columns.

The Schedule 17 application is planned for submission in mid-April 2022. Camden will undertake their own engagement as part of the determination process.

Matters relating to landscaping, including tree planting, green roofs and green walling, will be approved in a future Schedule 17 submission. Feedback on the landscaping proposals were requested to inform that future submission and allows additional time for design development.

HS2

5. No net loss of bio-diversity in Camden

Current Camden position

David Demolder

Update from LB Camden Green Space Team

James New/Greg Hitchcock

No net loss of bio-diversity in Camden

To NOTE the previously circulated slides covering:

- Current Camden area position
- Update on provision of temporary open spaces by LB Camden.

Questions.

No net loss of bio-diversity in Camden

High Speed Two Limited (HS2 Ltd) is seeking to achieve the goal of Phase One (London-West Midlands route) of the proposed High Speed Two (HS2) railway ('the scheme') resulting in no net loss in biodiversity at a route-wide level.

The HS2 Euston Station Integrated Project Team is currently considering if it can achieve this at a local level along with how it will achieve its undertaking and assurance commitments (1125, 1127).

A detailed update on this will be provided at the next Air Quality, Trees and Open Spaces Working Group.

HS2

Update from LB Camden Green Space Team
James New and Greg Hitchcock

Background

HS2 has resulted in the loss of 2 hectares of public open space during the construction phase, including public parks and neighbourhood play space

Camden secured assurances to mitigate for this temporary loss, to ensure adequate open space provision for local communities during construction.

This included:

- **Improvements to six of the main remaining public open spaces in the area**
- **£2 million for improvements to other open space (including nature conservation enhancements)**
- **£3 million for the creation of green infrastructure on Phoenix Road and North Gower Street**

This assurance is being implemented by the Green Space team, informed by extensive engagement with the local community.

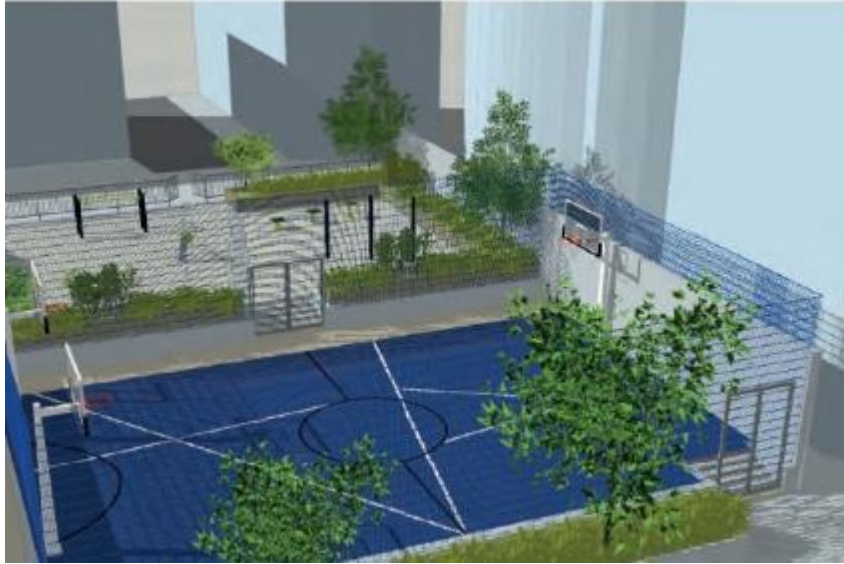
Phase I – Augustus House



Residents asked us to:

- Address the slope
- Retain space for games and play
- Make it feel lighter and brighter
- Increase opportunities for exercise

Phase I – Augustus House



How we addressed residents' priorities:

- Created two areas on two levels, Providing a range of opportunities for sport, fitness and play.
- The surface and walls are brightly painted.
- Increased planting to further brighten up the space and to add more greenery.

Phase I – Regents Park Estate

Additional local green space improvements include:
Harrington House Garden, Kirkstone and Hawkshead,
Langdale and Augustus House Garden.

Improvements include:

- New opportunities for play
- New planting throughout
- Additional seating
- New parklet area on the corner of Varndell and Harrington Street.



Tolmer's Square



Residents asked us to:

- Improve sight lines through the space
- Improve and create new paths
- Help reduce ASB issues through design (specifically in the 'sunken garden')
- Increase the amount of recreational space
- Make the planting more attractive
- Increase the amount of greenery in the space

Tolmer's Square



How we addressed residents' priorities:

- Created new paths through the space to improve accessibility
- Resurfaced all existing paths
- Remove and reduce brick walls and replace tall planting to improve site lines
- Replace existing planting with attractive, biodiverse plants.
- De-pave the sunken garden and plant as a rain garden with walkways to improve access through the space.
- Improve lighting throughout the site

Tolmer's Square

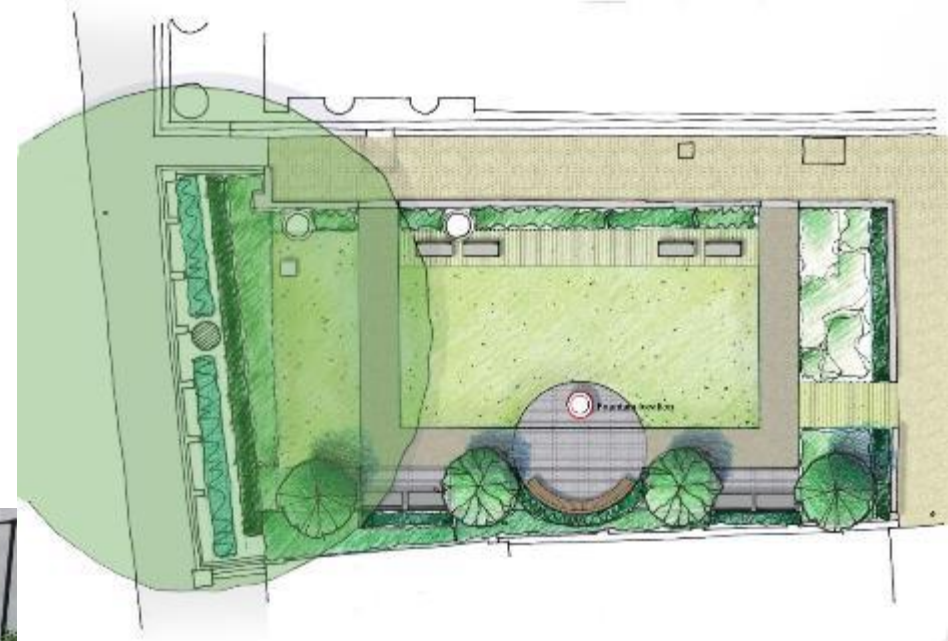


Tolmer's Square



St Pancras Church

St Pancras Parish Church, South Garden (Euston Road) –Completed March 2020. This project was part funded by a successful bid to the GLA and through the green spaces assurances received from HS2.



Improvements included:

- To make the gardens more accessible to the public
- Add new colourful planting and trees
- Offer new seating areas to provide a peaceful place to sit and enjoy
- Provide a new home to the restored fountain from St James's Gardens
- Provide a space for the church to hold outdoor events and ceremonies

St Pancras Church



Green Space Improvements - Site / Project Name	Status
• St Pancras Church Gardens	Complete 2020
• Tolmer's Square	Complete 2021
• Augustus House MUGA and Gardens (complete 2021)	Complete 2021
• Harrington House/Kirkstone Gardens (complete 2021)	Complete 2021
• Clarence Gardens (Spring 2022)	Start spring 2022
• Ampthill Square Estate	Start spring 2022
• Munster Square	Start summer 2022
• Cumberland Market, inc Third Age Project.	Start summer 2022
• Lacing Street/Churchway Estate	Start autumn 2022
• 85 -99 Stanhope Street • Ambleside, Buttermere, Kendal • Ennerdale and Grisedale Gardens	Start autumn 2022
• Everton Mews	Start autumn 2022
• Compton Close	Start summer 2022
• George Mews	Start autumn 2022
• Starcross Yard Temporary Open Space	Start spring 2022
• Regents Park Estate – Signage renewal	Start summer 2022

Greening Phoenix Road



Project milestones

Year	Project phase
2018-19	Feasibility Study
2019-20	Public Engagement
2021	Community engagement & emerging plan
2022	Install parklets & develop and implement ETO
2023	ETO finalised and detailed technical design for public realm
2024	Final scheme approved and implementation
2025	Community activation & ongoing use

Greening Phoenix Road



Next steps

Continue trials and community engagement including:

Parklets: Chalton Street and Phoenix Road

- co-designed with Somers Town Space and Public Studio
- Road Safety Audit completed
- public consultation December 2021 with Decision Report to follow
- Installation in Spring 2022

Picnic benches – trial locations along Phoenix Road - Spring 2022

Planters & tree-pit gardens – Summer 2022

Explore Play Streets and opportunities for activation of the street – Summer 2022

Workshop – embedding Somers Town heritage & character in the streetscape

HS2

6.Engagement approach

Ross Pearson/Maddelyn Sutton

Engagement approach

To NOTE the previously circulated slides covering:

- Move to engagement in person for working groups
- Move to engagement in person generally and lookahead

To NOTE that Working Group Chairs have been reminded of the importance of circulating all papers in advance following concerns about the Camden Traffic Working Group (UKPN omitted) and Noise Insulation Working Group.

To NOTE that from June 2022 ECRG meetings will return to an in-person format (see also agenda item 14).

Questions.

Return to in person meeting

We are keen to return to face-to-face engagement and we know that members of the community are too. We have started a move to in-person and hybrid events.

Routine engagement

In person drop-in events are now back as the routine assumption across the route. Online events will continue to be offered if hybrid meetings aren't viable for specific activities, depending on demand.

Station engagement

The public engagement in May/June on the design of the new station and public open space will include at least three in person events attended by the project team and online events too.

Main ECRG

From June 2022, ECRG will return to being held in person (with an option to join online). The June meeting of ECRG will be held at The Wesley Hotel, on Tuesday 14 June.

Working Groups

The format of each working group is different. The chairs of each have been briefed to start working towards holding them in person again, and this will be a subject of discussion at each working group.

Review of ECRG and working groups

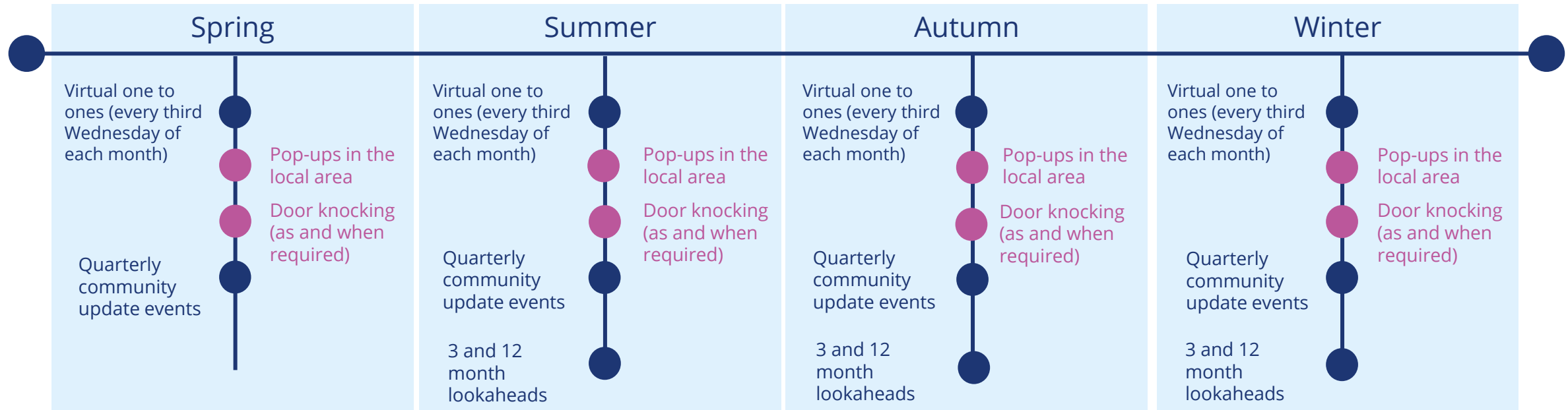
In discussion with the contact group, the following was agreed:

- ECRG should primarily remain an **escalation point** for the community where issues have not been satisfactorily resolved in other forums (working groups or other engagement);
- In order to facilitate a more effective ECRG, **improvements to working groups** should be considered. Each group has a different format and regularity. The move back to in person events represents an opportunity to make these improvements;
- So more time is reserved to **focus on key issues**, it will be assumed that general updates be treated as read before the meeting and not presented. Time will still be reserved for questions; and
- Work is needed from all participants to reduce the number of **repeat issues** at ECRG.

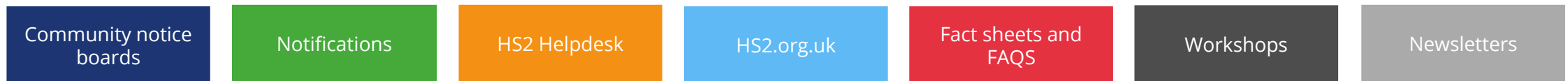
HS2 will meet with the contact group again in April/May to discuss further improvements to ECRG and the working groups.

We would welcome any further suggestions or thoughts on how to improve ECRG and the working groups.

SCS Adelaide Road engagement programme 2022



Other ways in which we stay in touch with our stakeholders and communities



Programme dates change during major construction. We may update our engagement programme to reflect changes.

Break

Please note that the meeting will recommence at 17.55 promptly



HS2

7.Action items review

David Demolder

Action items review

The review and receive comments in the remaining open actions.
To AGREE the closure of items since the last meeting.

HS2

8.Public Engagement

Nina Radford

Public Engagement

To NOTE the update on public engagement on the station and public realm:

Stage One

- Stakeholder workshops and feedback so far
- Media launch

Stage Two

- Public Engagement

Stage Three -setting in Camden

- Pre-application update

To NOTE that the ECRG Design Working Group met to consider aspects of the design on 14 March 2022.

Questions



**Station exterior
from Euston Road**

Station concourse
looking south
towards Euston
Road



HS2

9. HS2 Update

HS2

To NOTE the previously circulated presentations.

Slides will not be presented but questions will be welcomed.

HS2

Mace Dragados

David Demolder

Mace Dragados

To NOTE the works lookahead.

Questions.

Construction overview

Zone 5

Removal of the retaining walls and hoarding relocation, utilities diversion, footpath alterations

Former Maria Fidelis school playground

commencement of slab for site accommodation and construction skills centre

Utilities (Trial holes, diversions, upgrades, utilities corridor - various)

Traction Sub Station
piling completed, tunnelling continuing

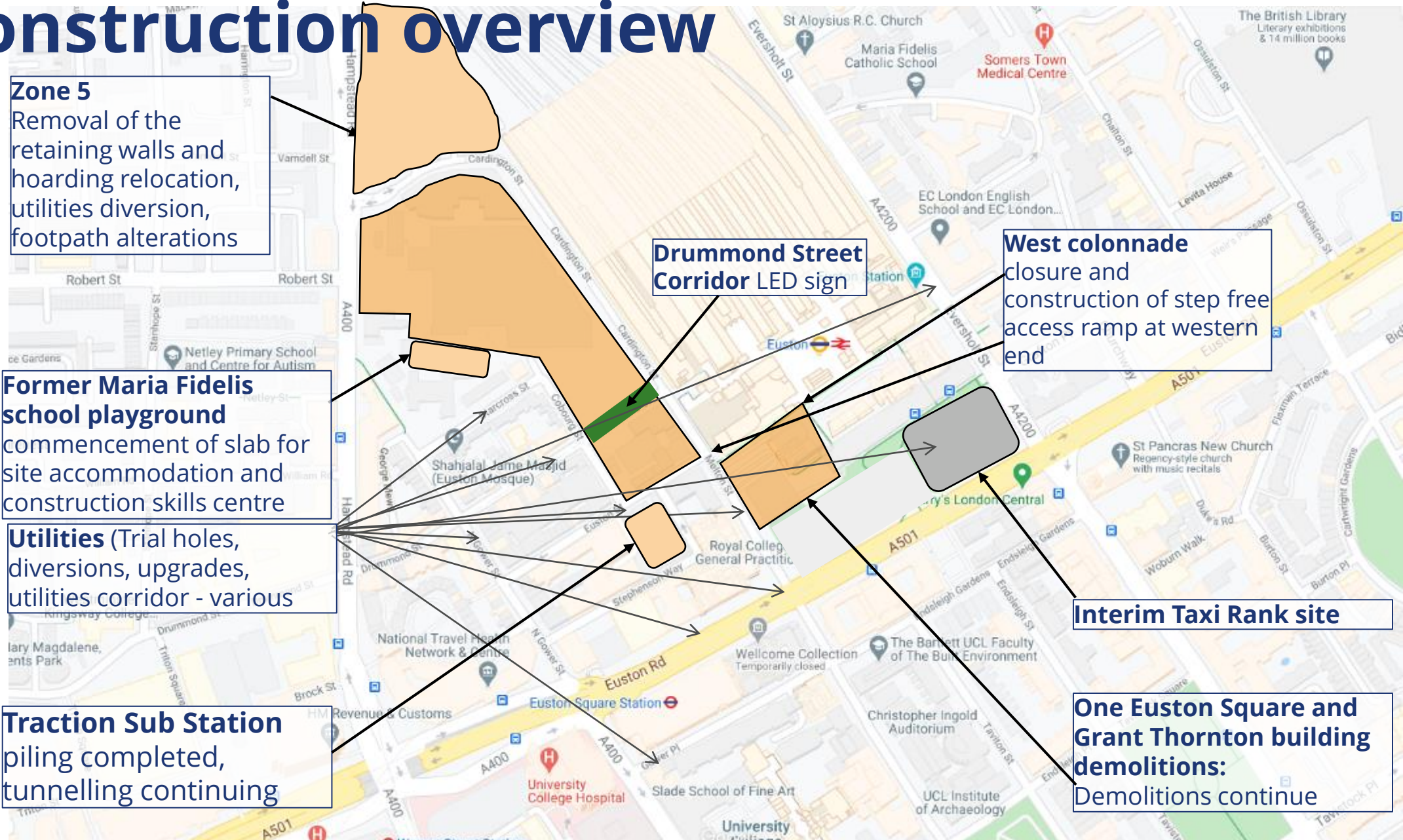
Drummond Street Corridor LED sign

West colonnade

closure and construction of step free access ramp at western end

Interim Taxi Rank site

One Euston Square and Grant Thornton building demolitions:
Demolitions continue



HS2

Network Rail

Tom Duckmanton/Emily Hanlon

Network Rail Update

Network Rail Update

To NOTE the works lookahead and update on Town & Country Planning applications for Clarkson Row and the north end of Mornington.

Questions.

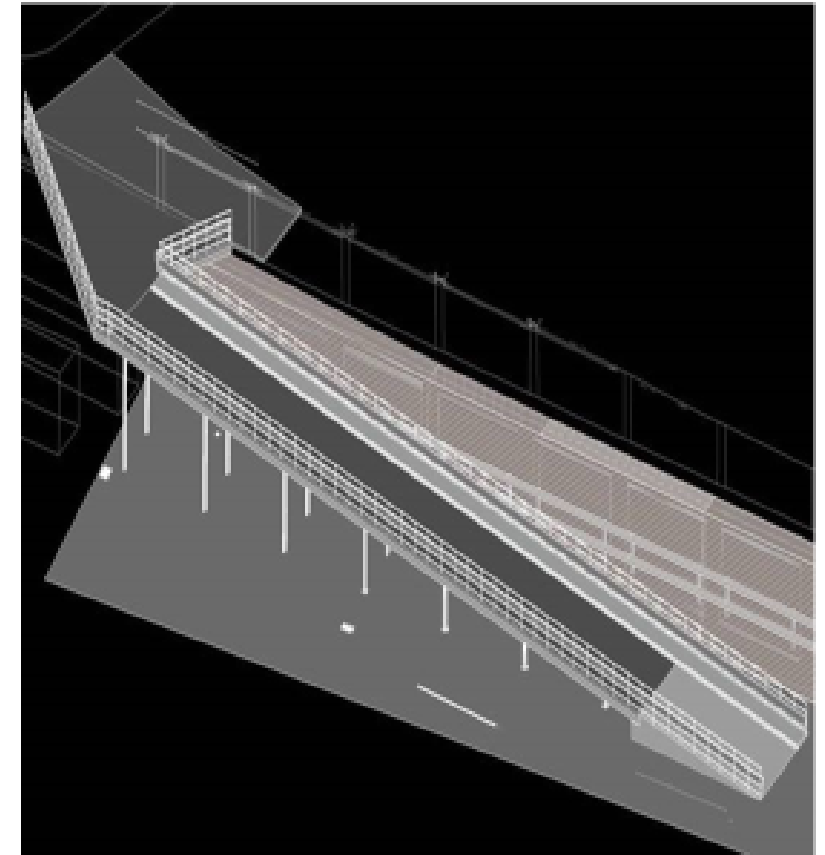
Euston HS2 Enabling work update:

Clarkson Row - Planning application progress update

- Planning application has been submitted to Camden Council.
- All enabling work at track level have been completed.
- The gate height is being reviewed and amended to improve the visual appearance, based on feedback received.
- Modified plans will be submitted to Camden Council within four weeks.

Mornington Terrace update

- Schedule 17 planning application under consideration



Look ahead – March to May

Work between Euston Station and Primrose Hill tunnels 1 March 2022 to 31 May 2022

- Track deliveries and rail replacement work
- Work will take place over several weekends:
 - Weekend 16 April 2022
 - Weekend 30 April 2022
- Survey of Euston platforms 15, 16 and 17 and detailed track surveys on the weekend 19 March 2022

HS2

SCS

Lee Harman

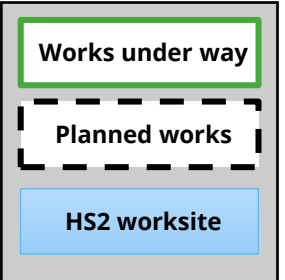
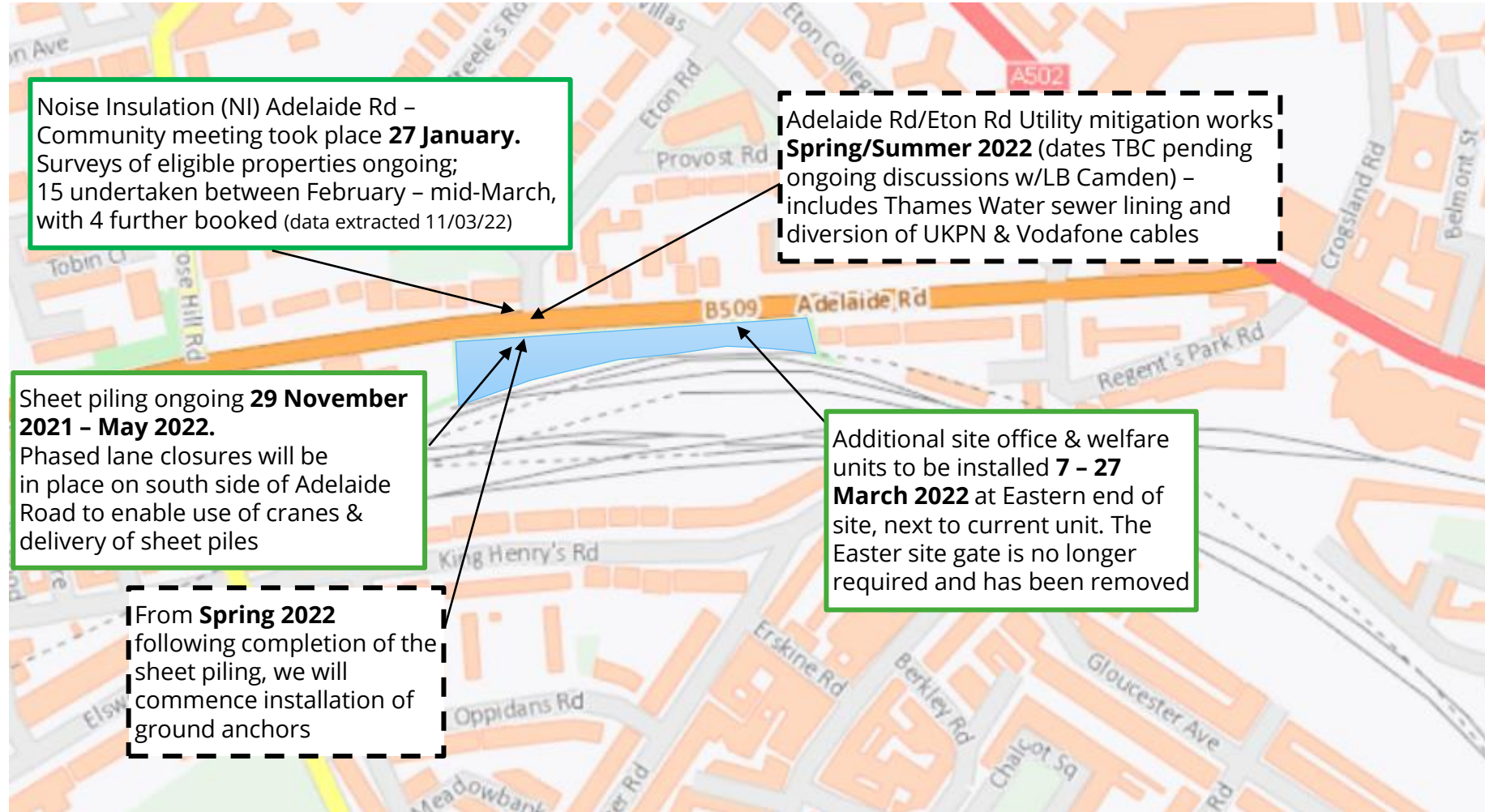
SCS

To NOTE the works lookahead.

Questions.

Adelaide Road Vent Shaft

Works update



*the dates for these phases might change. We'll provide updates at hs2.org.uk/in-your-area/

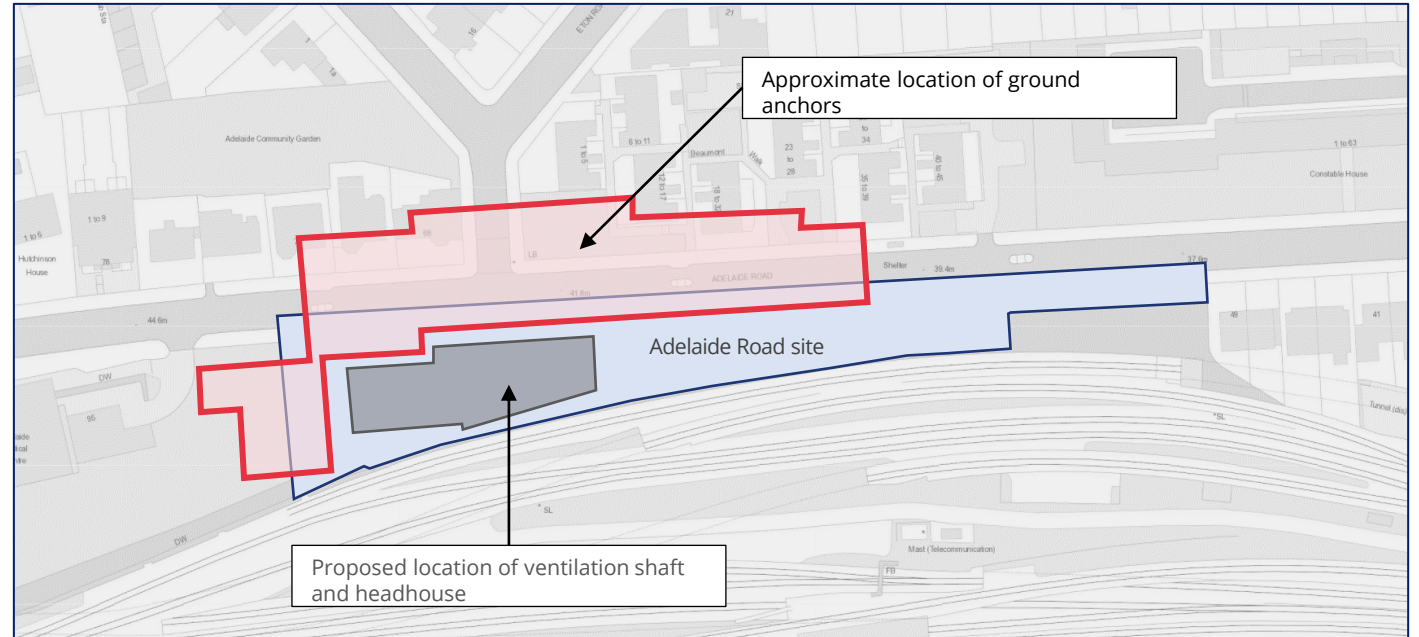
Adelaide Road ground anchors

From Spring 2022* we will start installing ground anchors at the Adelaide Road site.

What are ground anchors?

Ground anchors are lightweight, corrosive resistant rods or cables installed into the ground to hold, restrain and support building, civil engineering works and other structures, either permanently or temporarily.

Anchors will be carefully designed to avoid underground structures and services



How will they be installed?

The ground anchors at our Adelaide Road will pass beneath the footway, road and properties from Network Rail embankment area to the northern side of Adelaide Road and eastern side of the Nature Reserve. We will drill a hole from track-side to pass through the retaining wall and beneath the street and properties. Then we will install a liner and steel reinforcement, followed by grout.

We will install 235 anchors which will be up to 35 metres long and one to three metres apart.

*the dates for these works might change.
We'll provide updates at hs2.org.uk/in-your-area/

Current and upcoming works at Adelaide Road Vent Shaft in 2022*

Adelaide Road Vent Shaft programme	2022			
	Q1	Q2	Q3	Q4
Site Mobilisation				
Hoarding				
Traffic management				
Haul road & protection slab				
Vegetation clearance				
Site office & welfare: phase 3				
Adelaide Road Retaining Wall				
Piling platform				
Sheet piling				
Excavation & ground anchors: phase 1				
Continue bulk excavation & ground anchors to headhouse				
Headhouse				
Headhouse piling				
Noise Insulation				
Surveys				
Installation				
Utility Diversion Works				
Phase 1 utility diversion works				
Phase 2 diversion works to release shaft excavation				

*the dates for these phases might change. We'll provide updates at hs2.org.uk/in-your-area/

Adelaide Road Vent Shaft

Engagement - January 2022 onwards

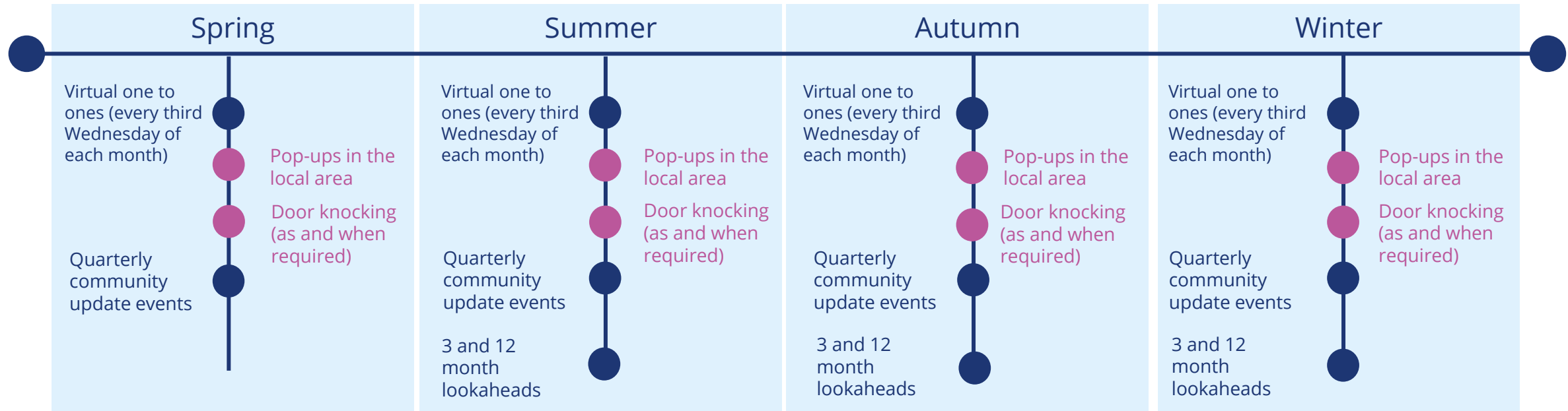
Ongoing engagement

- **17 January, 14 February & 14 March** Camden Community Traffic Working group meeting took place. Next meeting scheduled **11 April**
- **19 January, 16 February & 16 March** virtual 1:1 sessions held for residents local to Adelaide Road
- **27 January** Noise Insulation (NI); Community meeting took place to outline NI scheme and engage with eligible residents. 5 residents registered
- **8 February** Euston Community Representatives Group quarterly Air Quality, Trees & Open Spaces Working Group
- **11 & 17 February** Adelaide Road Noise Insulation surveys and Town Planning Mechanical Ventilation surveys undertaken
- **17 February** Camden Heritage update meeting, attended by LB Camden and Historic England
- **24 February** Adelaide Road Community update event; an overview of ongoing and upcoming works at the Adelaide Road Vent Shaft site and surrounds was provided. Key upcoming works presented included the new site office & welfare installation in March and the future ground anchor installation
- SCS JV Community Engagement hold fortnightly catch ups with Camden Community Liaison team
- SCS JV Engagement team are in regular contact with the HS2 Helpdesk to respond to community enquiries about our works

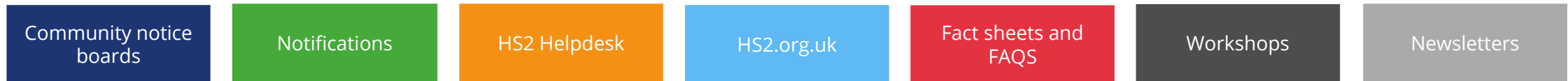
Upcoming engagement

- **23 March** – Camden Tree Panel
- Virtual 1:1s for residents local to Adelaide Road take place monthly. Residents can book a 20-minute slot between 3pm and 6pm on the following dates throughout 2022; **20 April, 18 May, 15 June, 20 July, 17 August, 21 September, 19 October, 16 November, 21 December**
- SCS JV Community Engagement pop-ups commencing **Spring 2022** onwards; dates and locations in the Adelaide Road area are under review, details to follow
- Adelaide Road Community update event planned for **May (date TBC)**; to provide an update on the site layout, works progress and summer Utility works

Adelaide Road engagement programme 2022



Other ways in which we stay in touch with our stakeholders and communities



*Programme dates change during major construction. We may update our engagement programme to reflect changes

Ground investigations on Parkway | Easter

Surveys on Parkway to access the structure of the bridge above Park Street tunnels

For safety, because we are drilling above the tunnels, these works can only be carried out when the tunnels are not in use

Date	Works	Hours
7 to 14 Apr	Trial holes to check for services and prepare working areas for surveys	Monday to Friday 8am to 6pm
15 to 18 Apr (Easter rail closure)	Drill boreholes	7.30am to 11.30pm

We plan to carry out further ground investigation trial holes on Parkway in spring/summer 2022

We are still confirming the details of these works and will provide more information closer to the time



SCS works during easter rail closure | 15 to 19 April

What	Start	Finish	Works
Parkway (street-level)			
Boreholes	7.30am Friday 15 Apr	11.30pm Monday 19 Apr	<ul style="list-style-type: none"> As per previous slide
Camden Cutting & Euston Throat worksites (within railway cutting)			
I&M	8.30am Friday 15 Apr	11.30pm Monday 18 Apr	<ul style="list-style-type: none"> 24/7 Installing I&M equipment within cutting & monitoring
GI	3am Friday 15 Apr	2am Tuesday 19 Apr	<ul style="list-style-type: none"> 24/7 Coring & hand-dug trial pits beneath Hampstead Road bridge (abutments and central piers) Coring & PTSI survey of Upper Park Street tunnel
Piling	7.30am Friday 15 Apr	11.30pm Monday 18 Apr	<ul style="list-style-type: none"> Piling 7.30am to 5pm, concrete pour until 11.30pm Install 4 piles at site level beside railway, in Granby Terrace bridge worksite

Parkway utility mitigation works | summer 2022

Parkway utility works now planned to begin summer 2022, with tunnelling works now due to start early 2023

- We continue to carry out surveys and investigations to determine the scope of mitigation works required
- We continue to look at options to reduce the impact of these works as we work our way through the planning process

We will continue to provide updates on the works with further details available in May / spring 2022



Euston Approaches engagement programme 2022

<p>Spring</p> <ul style="list-style-type: none"> •Euston Approaches newsletter (mid-Mar) •Community events – virtual / in person (end Mar) •Parkway utilities community sessions •121s as required •Pop-ups in person (weekly) •Pop-ups virtual (monthly) •Surma Community Centre drop-in (monthly) 	<p>Summer</p> <ul style="list-style-type: none"> •Construction Update (content refresh) •Parkway utilities community sessions •121s as required •Pop-ups in person (weekly) •Pop-ups virtual (monthly) •Surma Community Centre drop-in (monthly) 	<p>Autumn</p> <ul style="list-style-type: none"> •Euston Approaches newsletter •Construction Updates (virtual) •Euston Portal Headhouse initial design ‘involve’ engagement (TBC) •121s and property-specific meetings •Pop-ups in person (weekly) •Pop-ups virtual (monthly) •Surma Community Centre drop-in (monthly) 	<p>Winter</p> <ul style="list-style-type: none"> •Euston Portal Headhouse ‘inform’ engagement (TBC) •Construction Updates (content refresh) •121s as required •Pop-ups in person (weekly) •Pop-ups virtual (monthly) •Surma Community Centre drop-in (monthly)
--	--	--	--

Ways in which we stay in touch with our stakeholders and residents

Workshops on key works or topics	Pop-ups	Community notices	121s as required	Property / issue-specific meetings	Community events	Newsletters	HS2 Helpdesk and website	Fact sheets and FAQs
----------------------------------	---------	-------------------	------------------	------------------------------------	------------------	-------------	--------------------------	----------------------

Programme dates change during major construction. We may update our engagement programme to reflect changes.

Euston Approaches engagement - 3-month lookahead

Mar 2022	Apr 2022	May 2022
<ul style="list-style-type: none"> • 121s as required (inc Parkway utilities, lorry movements, ground movement etc) • Euston Approaches online pop-up (weekly) - advertised in ANLs and Helpdesk • Fitzrovia Youth in Action Community Champions and Regent's Park estate residents association meeting (monthly) • Surma Community Centre drop-in (monthly) • Surma Community Centre women's group (monthly) • Surma Community Centre over 50s group (monthly) • Local support – Surma Community Centre lunch • North Bridge House Prep school update (monthly) • Community traffic working group (monthly) • ECRG agenda setting meeting & ECRG (quarterly) • Construction update events (29, 30 & 31 Mar) 	<ul style="list-style-type: none"> • 121s as required (inc Parkway utilities, lorry movements, ground movement etc) • Euston Approaches in person pop-up (weekly) - advertised in ANLs and Helpdesk • Fitzrovia Youth in Action Community Champions and Regent's Park estate residents association (monthly) • Surma Community Centre drop-in (monthly) • Surma Community Centre women's group (monthly) • Surma Community Centre over 50s group (monthly) • North Bridge House Prep school update (monthly) • Netley school event at VHA (TBC) • Community traffic working group (monthly) • Regent's Park estate lorry route meet-up with MET police 	<ul style="list-style-type: none"> • 121s as required (inc Parkway utilities, lorry movements, ground movement etc) • Regent's Park estate pop-up (weekly) - advertised in ANLs and Helpdesk • Fitzrovia Youth in Action Community Champions and Regent's Park estate residents association (monthly) • Surma Community Centre drop-in (monthly) • Surma Community Centre women's group (monthly) • Surma Community Centre over 50s group (monthly) • North Bridge House Prep school update (monthly) • Community traffic working group (monthly) • London Zoo, The Royal Parks and North Bridge House Prep school creative arts workshop (TBC)

10.Community Questions/AOB

- Questions not related to agenda items raised in person or via the Chat function.
- Questions relating to agenda items not dealt with in the time allocated.
- Agreement on how unanswered questions will be responded to.

HS2

11.Minutes of the last meeting and Matters Arising

Dr Karl Mackie CBE

12.Meeting format for June

To NOTE the meeting location for the June and remaining meetings for 2022.

- Wesley Hotel
- Catering will be provided so please let us know if you are unable to attend
- Printed copies of papers will be made available
- A “Teams” link will be provided for members not wishing to join in person.

HS2

Closing remarks

Dr Karl Mackie

HS2

12 month lookahead

22nd March 2022

12 month lookahead – Indicative*

March 2022

- Adelaide Road sheet piling and earthworks ongoing, phased lane closures on South side of Adelaide Road
- Adelaide Road Noise Insulation surveys of eligible properties ongoing
- Adelaide Road installation of additional site welfare & office building, following removal of Eastern access gate
- Vegetation and scrap rail/timber clearance in area between existing Network Rail retaining wall – to facilitate installation of new Ground Level Troughing for protection and management of trackside cables
- Adelaide Road test ground anchor installation
- Piling in Camden Cutting and Euston Throat
- Ground anchor install works
- Strengthening works to retaining wall
- Tower crane B, C & D install in Camden Cutting and Euston Throat
- Hampstead Road phase 1 utility diversion
- Traction Sub Station main works
- Mari Fidelis cabin install
- Secondary utilities diversions
- Maria Fidelis slab
- Towers demolitions

April 2022

- Adelaide Road sheet piling and earthworks ongoing, phased lane closures on South side of Adelaide Road
- Adelaide Road Noise Insulation manufacturing and first installations commence
- Lorry lay-by install on Park Village East (north)
- Ground anchor install works
- Piling in Camden Cutting and Euston Throat
- Strengthening works to retaining wall
- Hampstead Road phase 1 utility diversion
- Tower crane B, C & D install in Camden Cutting and Euston Throat
- Traction Sub Station main works
- Maria Fidelis cabin install
- Secondary utilities diversions
- Maria Fidelis slab, steelwork, blockwork
- Towers demolitions

May 2022

- Adelaide Road sheet piling completion, phased lane closures on South side of Adelaide Road
- Adelaide Road bulk excavation and installation of working platforms
- Adelaide Road Noise Insulation manufacturing and installations ongoing
- Piling in Camden Cutting and Euston Throat
- Strengthening works to retaining wall
- Ground anchor install works
- Cavern shaft piling
- New cable route from Lidlington Place to Varndell Street
- Hampstead Road phase 1 utility diversion
- Traction Sub Station main works
- Maria Fidelis cabin install
- Secondary utilities diversions
- Maria Fidelis modules assembly and fit out
- Towers demolitions

* These dates are subject to change; they are presented here to give a sense of the project timeline. We will notify and update the community as the works progress.

12 month lookahead – Indicative*

June 2022

- Adelaide Road site setup works, including footpath and Utility protection slab works, manhole installation and UKPN substation
- Adelaide Road earthworks ongoing & Ground Anchor installation commences
- Adelaide Road and surrounds utility mitigation & diversion works commence mid-June
- Parkway utility works
- Piling in Camden Cutting and Euston Throat
- Strengthening works to retaining wall
- Cavern shaft piling
- Park Village East utilities mitigation works
- New cable route from Lidlington Place to Varndell Street
- Hampstead Road phase 1 utility diversion
- Secondary utilities diversions
- Maria Fidelis accommodation modules assembly and fit out
- Traction Sub Station main works
- Towers demolitions

July 2022

- Adelaide Road Ground Anchor installation and earthworks ongoing
- Adelaide Road and surrounds utility mitigation & diversion works ongoing
- Parkway utility works
- Piling in Camden Cutting and Euston Throat
- Strengthening works to retaining wall
- Cavern shaft piling
- Park Village East utilities mitigation works
- New cable route from Lidlington Place to Varndell Street
- Hampstead Road phase 1 utility diversion
- Traction Sub Station main works
- Maria Fidelis fit out
- Towers demolitions

August 2022

- Adelaide Road Ground Anchor installation and earthworks ongoing
- Adelaide Road and surrounds utility mitigation & diversion works ongoing
- Parkway utility works
- Piling in Camden Cutting and Euston Throat
- Cavern shaft piling
- Tower crane F install
- Strengthening works to retaining wall
- Park Village East utilities mitigation works
- New cable route from Lidlington Place to Varndell Street
- Hampstead Road phase 1 utility diversion
- Traction Sub Station main works
- Sewer works Cobourg Street
- Maria Fidelis fit out
- Towers demolitions

* These dates are subject to change; they are presented here to give a sense of the project timeline. We will notify and update the community as the works progress.

12 month lookahead – Indicative*

September 2022

- Adelaide Road earthworks ongoing – bulk excavation to formation level
- Parkway utility works
- Piling in Camden Cutting and Euston Throat
- Strengthening works to retaining wall
- Park Village East utilities mitigation works
- New cable route from Lidlington Place to Varndell Street
- Secondary utilities diversions Euston Road
- Maria Fidelis fit out
- Towers demolitions complete

October 2022

- Adelaide Road earthworks ongoing – bulk excavation to formation level
- Adelaide Road access road and ramp installation, to access the lower level of site following excavation
- Parkway utility works
- Piling in Camden Cutting and Euston Throat
- Strengthening works to retaining wall
- Park Village East substation install
- New cable route from Lidlington Place to Varndell Street
- Site set up for piling works in zone 5 (old petrol station site)
- Maria Fidelis fit out
- Euston Road traffic management

November 2022

- Adelaide Road earthworks ongoing – installation of working platforms for future works to build the vent shaft & headhouse
- Parkway utility works
- Piling in Camden Cutting and Euston Throat
- Strengthening works to retaining wall
- Park Village East substation install
- New cable route from Lidlington Place to Varndell Street
- Site set up for piling works in zone 5 (old petrol station site)
- Euston Road traffic management

December 2022

- Piling in Camden Cutting and Euston Throat
- Strengthening works to retaining wall
- Park Village East substation install
- Mornington Street bridge east abutment works
- New cable route from Lidlington Place to Varndell Street
- Site set up for piling works in zone 5 (old petrol station site)
- Site set up for Hampstead Road piling works

January 2023

- Piling in Camden Cutting and Euston Throat
- Park Village East substation install
- New cable route from Lidlington Place to Varndell Street
- Site set up for piling works in zone 5 (old petrol station site)
- Site set up for Hampstead Road piling works

February 2023

- Piling in Camden Cutting and Euston Throat
- New cable route from Lidlington Place to Varndell Street
- Site set up for piling works in zone 5 (old petrol station site)

* These dates are subject to change; they are presented here to give a sense of the project timeline. We will notify and update the community as the works progress.