

Update: Notice of launch pit excavations, reinforced concrete works and micro-tunnelling on Wormwood Scrubs

High Speed Two (HS2) is the new high speed railway for Britain

We are following Government and Public Health England (PHE) advice on working safely during the pandemic. As we increase face to face engagement, in addition to virtual engagement, we will ensure all events and meetings adhere to the guidelines. The health and safety of our workforce and the communities we work within is our priority. If you have any questions about this, please contact our Helpdesk to find out more.

We are continuing our work to divert utilities along Old Oak Common Lane by installing eight micro tunnels from the Wormwood Scrubs site up to the main compound. You can find out more about our works, including our latest works updates here: <https://www.hs2.org.uk/in-your-area/local-community-webpages/hs2-in-old-oak-and-north-acton/wormwood-scrubs/>

We previously notified you about the micro tunnelling taking place on Wormwood Scrubs to divert utilities and we are writing to provide an update on this work. This micro-tunnelling is now due to start in early June.

Excavation and Reinforced Concrete Works in Wormwood Scrubs

We will be excavating a launch shaft to prepare the area to launch the micro-tunnelling machines. As part of this work, we will also be installing concrete structures in the ground to enable the micro-tunnelling to be carried out.

To complete this work an excavator will dig to the pit. All material will be removed from site using tipper lorries. Once the excavation is complete, we will install a concrete base slab with front and back walls.

Micro-tunnelling works in Wormwood Scrubs

Once the shaft is complete, we will be installing eight micro-tunnels, which will run from the launch chamber in Wormwood Scrubs site underneath the railway tracks to the reception chamber in the main site. These micro-tunnels will be used to divert the services along Old Oak Common Lane. This diversion is needed to allow us to lower Old Oak Common Lane that is planned in the future.

Notification



Duration of works

Construction will commence from early June 2022 until mid-September 2022, between 8am and 6pm Monday to Friday and 8am and 1pm on Saturdays if required.

What to expect

Digger movement, concrete lorries, muck away lorries, excavation, pipe deliveries and micro-tunnelling works.

For safety reasons, the micro-tunnelling works will take place 24/7.

What we will do

We will use best practicable means to minimise any impact on our site neighbours.

Traffic management will also be in place to support this work.

Update: Notice of launch pit excavations, reinforced concrete works and micro-tunnelling on Wormwood Scrubs

www.hs2.org.uk

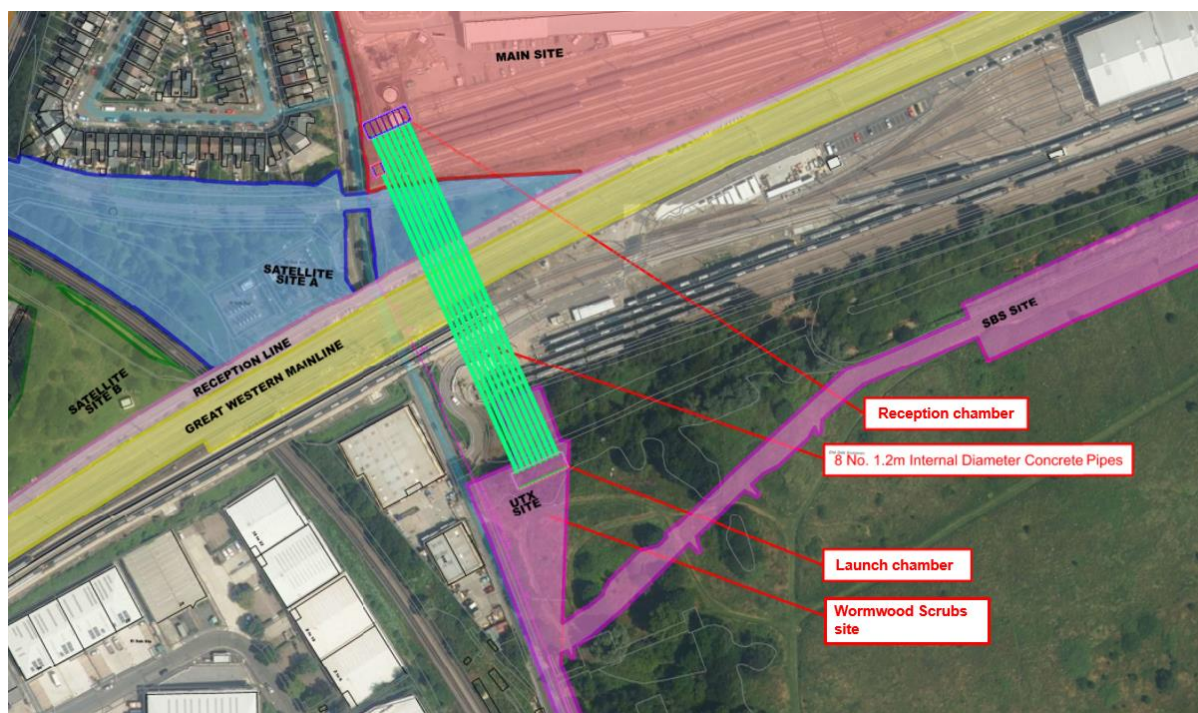
Notification



The works will be carried out within the secure compound built in Wormwood Scrubs and no additional vegetation clearance will take place as part of this work. The location of works is shown on the image below.

We will use best practicable means to minimise any impact on our site neighbours. The noise and vibration impact from the operation will be negligible and will be no more than the passing traffic. The works will be completed within the site hoarding, which will act as a barrier to reduce the noise. The excavation and reinforced concrete works will be carried out between 8am – 6pm Monday to Friday and 8am – 1pm on Saturdays.

For safety reasons, the micro-tunnelling will be 24/7. Weekend working will only apply if there is a tunnel already under construction, for example a new tunnel will not be started on a weekend.



The above image shows the site working area with the eight green lines showing the micro-tunnels running from Wormwood Scrubs to the main site

Contact our HS2 Helpdesk team on [08081 434 434](tel:08081434434)

What else is happening in your area?

www.hs2.org.uk

Contact our HS2 Helpdesk team

Our team is here to listen and respond to your enquiry, complaint or feedback to help us be a good neighbour.

You can contact our Helpdesk team all day, every day of the year on:

Freephone: 08081 434 434

Minicom: 08081 456 472

Email: hs2enquiries@hs2.org.uk

Keep up-to-date with your local community website

To find out more about what's happening in your area and receive regular email updates, you can sign up to our local community websites at: www.hs2inyourarea.co.uk.

About our Community and Business Funds

We are offering two funds that are available to local communities and businesses between the West Midlands and London, to help with the disruption caused by our construction work. These are the Community and Environment Fund (CEF) and the Business and Local Economy Fund (BLEF).

The CEF is designed to give communities the opportunity to share in the benefits of HS2. It is an allocated fund that communities are able to apply for, to help to support local projects that aim to improve their local area.

The BLEF is designed to support local economies that may be disrupted by the construction of HS2. BLEF grants are for local business support organisations and local authorities to help maintain business activity in local communities.

For more information about each of these funds, including how to apply, please visit: <https://www.groundwork.org.uk/hs2funds>



Keeping you informed

We are committed to keeping you informed about work on HS2. This includes ensuring you know what to expect and when to expect it, as well as how we can help.

Residents' Charter and Commissioner

The Residents' Charter is our promise to communicate as clearly as we possibly can with people who live along or near the HS2 route.
www.gov.uk/government/publications/hs2-residents-charter

We also have an independent Residents' Commissioner whose job is to make sure we keep to the promises we make in the Charter and to keep it under constant review. Find reports at:
www.gov.uk/government/collections/hs2-ltd-residents-commissioner
You can contact the Commissioner at:
residentscommissioner@hs2.org.uk

Construction Commissioner

The Construction Commissioner's role is to mediate and monitor the way in which HS2 Ltd manages and responds to construction complaints. You can contact the Construction Commissioner by emailing:
complaints@hs2-cc.org.uk

Property and compensation

You can find out all about HS2 and properties along the line of route by visiting:
www.gov.uk/government/collections/hs2-property
Find out if you're eligible for compensation at:
www.gov.uk/claim-compensation-if-affected-by-hs2


Holding us to account

If you are unhappy for any reason you can make a complaint by contacting our HS2 Helpdesk team. For more details on our complaints process, please visit our website:
www.hs2.org.uk/how-to-complain

Contact Us

Contact our HS2 Helpdesk team all day, every day of the year on:

 Freephone 08081 434 434

 Minicom 08081 456 472

 Email hs2enquiries@hs2.org.uk

Write to:
FREEPOST
HS2 Community Engagement

Website www.hs2.org.uk

To keep up to date with what is happening in your local area, visit:
www.hs2inyourarea.co.uk

Please contact us if you'd like a free copy of this document in large print, Braille, audio or easy read. You can also contact us for help and information in a different language.

HS2 Ltd is committed to protecting personal information. If you wish to know more about how we use your personal information please see our Privacy Notice
<https://www.gov.uk/government/publications/high-speed-two-ltd-privacy-notice>

Reference number: HS2-MW-BBVS-Ph1-OOC-St-S4-prog-works-20-12/04/2022

High Speed Two (HS2) Limited, registered in England and Wales.
Registered office: Two Snowhill, Snow Hill Queensway, Birmingham B4 6GA.
Company registration number: 06791686. VAT registration number: 888 8512 56.