

Road closure on Chase Road for utility works

April 2022 | www.hs2.org.uk

High Speed Two (HS2) is the new high speed railway for Britain.

We are following Government and Public Health England (PHE) advice on working safely during the pandemic. As we increase face to face engagement, in addition to virtual engagement, we will ensure all events and meetings adhere to the guidelines.

Road closure on Chase Road

Throughout 2021 and early 2022, we carried out a series of ground investigations on Chase Road. These investigations helped us to understand the locations of utilities services below the ground and how to best protect them while we build the new railway. We now need to carry out works to protect the utility services below Chase Road ahead of future tunnelling works. These works will consist of upgrades to existing utility services, diversion of utilities and installation of new ducts and connections.

Due to the location of the utility services below the road, Chase Road will be closed to vehicles in both directions from 29 April to early October 2022 between Sunbeam Road and the junction with Victoria Road. A diversion route will be in place. Pedestrian access on Chase Road will be maintained during the works. The works will be completed in various phases. A map showing the location of the closure, phases and diversion route is included on the following pages.

To carry out the works as quickly and safely as possible, we have agreed with Ealing Council that works can take place up to 24 hours a day on Mondays to Fridays and between 8am to 9pm on Saturdays and Sundays. We may not be working at all times during the above.

We will be digging temporary trenches along Chase Road to access the utilities services below ground. We will then backfill and relay the tarmac once works have been completed. Noisy works and activities that may cause more disruption will not be permitted between 6pm and 8am.

Your utilities will not be affected during these works. The dates for these works may change.

If you have a question about HS2 or our works, please contact our HS2 Helpdesk team on 08081 434 434 or email hs2enquiries@hs2.org.uk

Notification



Duration of works

29 April 2022 to early October 2022

Working Hours

In agreement with Ealing Council, we are permitted to work 24 hours a day Monday to Friday and from 8am to 9pm on Saturdays and Sunday

We may be on site for an hour before the start and/or end of the shift

What to expect

Full road closure on Chase Road between Sunbeam Road and the Victoria Road junction

Pedestrian access will remain along Chase Road

Suspension of parking bays and bus stops W, PJ and PD

Excavations

Road resurfacing works

What we will do

Continue to monitor our working methods to ensure they are safe and reduce disruption to the local community

Call our HS2 Helpdesk team on **08081 434 434**

Road closure on Chase Road for utility works

Notification



www.hs2.org.uk

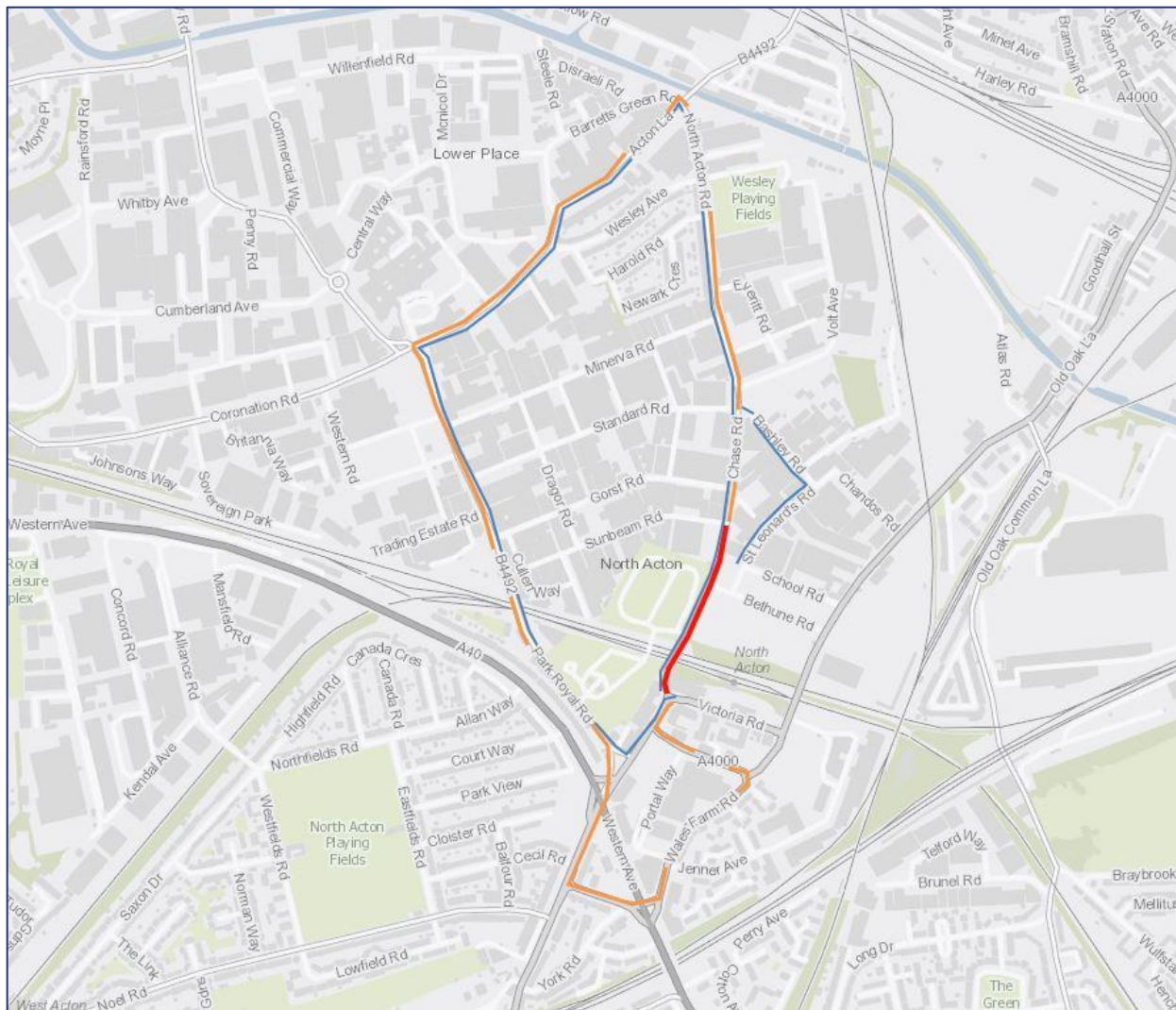
Phases of work on Chase Road

These works will be carried out in three phases which can be viewed on the maps below and on the following pages. Phase one will take place from 29 April 2022 to mid-July 2022 and phases two and three will take place from mid-July to early October 2022. These dates may change.

During these works we will need to suspend parking bays on Chase Road between Sunbeam Road and the junction with Victoria Road. The parking bay suspensions will be clearly signed.

We are speaking with local businesses in relation to these works.

Chase Road works closure location and diversion routes



Key

Road closure



Pedestrian route



Vehicle diversion route



Contact our HS2 Helpdesk team on **08081 434 434**

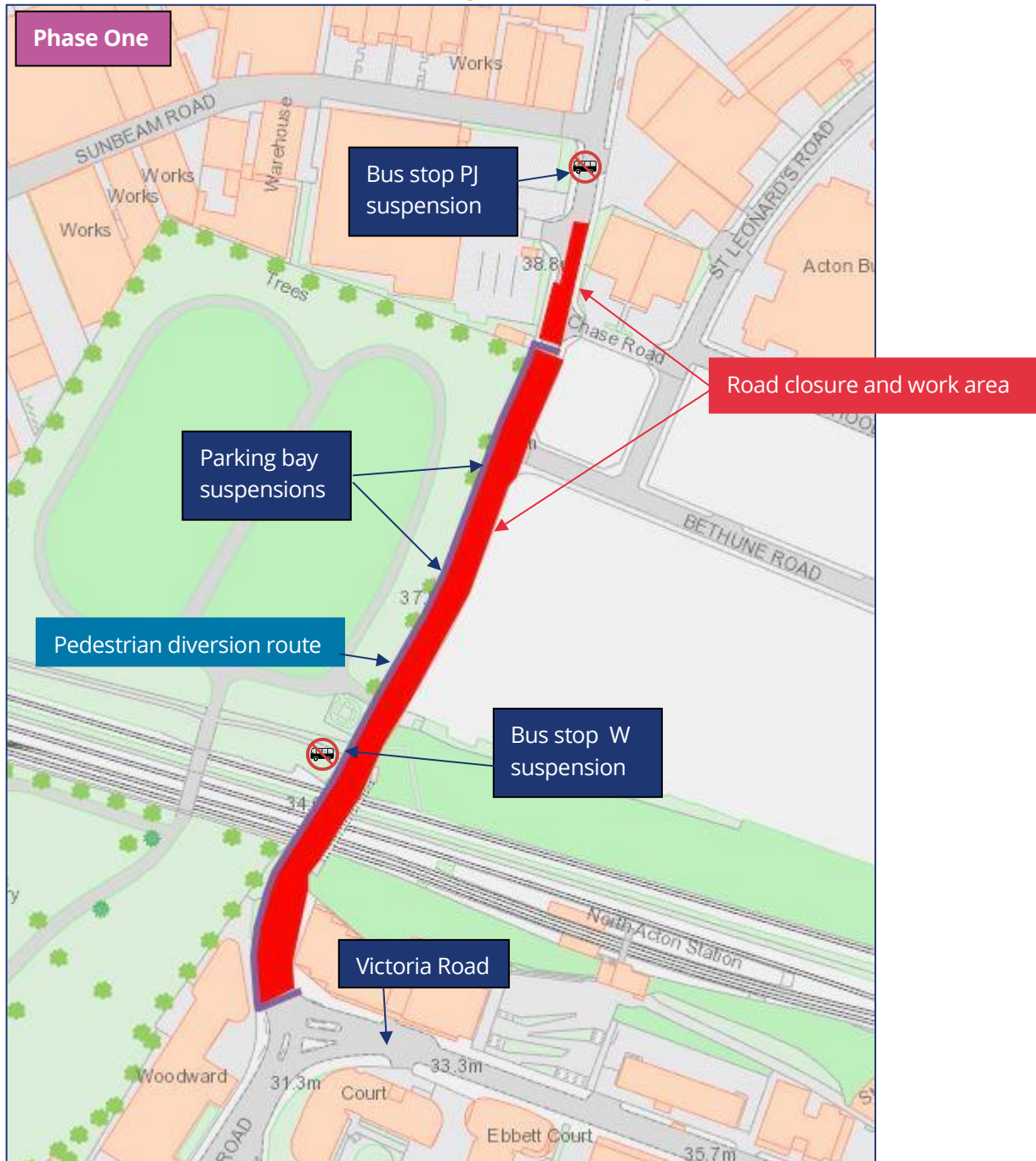
Road closure on Chase Road for utility works

Notification



www.hs2.org.uk

Chase Road works Phase one – 29 April to mid-July 2022



The dates for these works may change.

Contact our HS2 Helpdesk team on **08081 434 434**

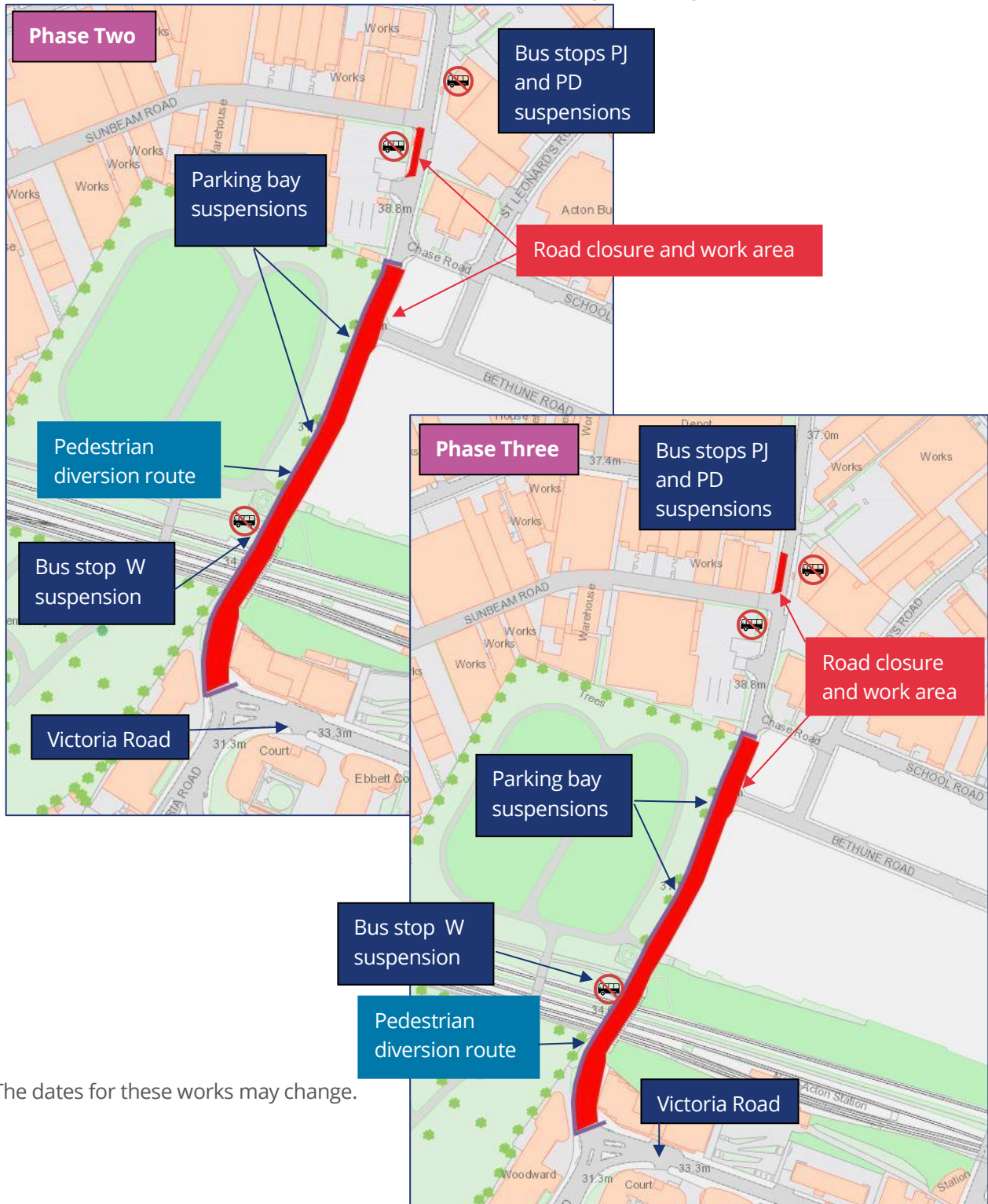
Road closure on Chase Road for utility works

Notification



www.hs2.org.uk

Chase Road works Phase two and three – mid-July to early-October 2022



The dates for these works may change.

Contact our HS2 Helpdesk team on **08081 434 434**

Road closure on Chase Road for utility works

Notification



www.hs2.org.uk

Bus stop suspensions on Chase Road

During these works the 440 bus route will be on diversion and bus stops W, PJ and PD which support this route will be temporarily suspended on Chase Road. Please allow more time for journeys during this period. You can also check your journey using the journey planner on the TFL Website at <https://tfl.gov.uk/plan-a-journey/>

What to expect

During these works you may notice the following:

- Road closure on Chase Road between Sunbeam Road and the Victoria Road junction including parking bay suspensions
- A signed pedestrian diversion route along Chase Road
- Staff will be on site throughout these works
- Excavators and digging equipment
- Road surface relaying machinery
- Traffic management and signage in the local area
- Suspension of bus stops W, PJ and PD (see above details regarding bus stop suspensions)
- Pedestrian route to be maintained along Channel Gate Road

Minimising disruption to the local community

We apologise in advance for any disruption you experience during these works. Throughout these works we will continue to monitor our working methods to ensure that they are safe and reduce disruption to the local community. Some of the practices we will put in place to minimise disruption are:

- The use of noise barriers where applicable
- Activities that may cause greater disruption will not be allowed during the hours of 6pm and 8am
- The use of water sprays for works that may produce excess dust
- Advise our operative to be mindful of the local community during works

Speak with your local engagement team

You can contact our local engagement team via the HS2 Helpdesk. We are also available to speak with you at monthly virtual one to ones in Old Oak and Park Royal on the following dates

- Wednesday 27 April, 3pm to 6pm
- Wednesday 25 May, 3pm to 6pm

To register for the next drop in please visit www.hs2.org.uk/events/. If you are not able to attend a virtual 1:1 please contact the Helpdesk so we can arrange another time to speak with you.

Keeping you informed

We are committed to keeping you informed about work on HS2. This includes ensuring you know what to expect and when to expect it, as well as how we can help you.

The Residents' Commissioner

The independent Residents' Commissioner oversees and monitors our commitments to you.

The commissioner's reports and our responses can be found at www.gov.uk/government/collections/hs2-ltd-residents-commissioner

The Residents' Commissioner makes sure we fulfil the commitments in the HS2 Community Engagement Strategy (<https://bit.ly/3oOA25j>).

The Residents' Commissioner can be contacted on: residentscommissioner@hs2.org.uk

Construction Commissioner

The independent Construction Commissioner regularly meets our Chief Executive Officer to raise any concerns or emerging trends across HS2.

The Construction Commissioner's role has been developed to monitor the way we manage and respond to construction complaints.

The commissioner mediates on disputes about construction, involving individuals and organisations, that we can't resolve. The commissioner advises members of the public about how to make a complaint about construction.

The Construction Commissioner can be contacted on: complaints@hs2-cc.org.uk

Property and compensation

You can find out about HS2 and properties along the route by visiting:

www.gov.uk/government/collections/hs2-property

Find out if you can claim compensation at:

www.gov.uk/claim-compensation-if-affected-by-hs2

Holding us to account

If you are unhappy for any reason you can make a complaint by contacting the HS2 Helpdesk. For more details on our complaints process, please visit:

www.hs2.org.uk/in-your-area/contact-us/how-to-complain/

Contact us

Contact our HS2 Helpdesk team all day, every day of the year on:

 Freephone **08081 434 434**

 Minicom **08081 456 472**

 Email **HS2enquiries@hs2.org.uk**

Write to:

FREEPOST

HS2 Community Engagement

Website **www.hs2.org.uk**

To keep up to date with what is happening in your local area, visit: **www.HS2inyourarea.co.uk**

Please contact us if you'd like a free copy of this document in large print, Braille, audio or 'easy read' format. You can also contact us for help and information in a different language.

HS2 Ltd is committed to protecting personal information. If you wish to know more about how we use your personal information please see our Privacy Notice: <https://www.gov.uk/government/publications/high-speed-two-ltd-privacy-notice>

Reference number: HS2-EW-SCS-Ph1-Ar-So-S1-Prog-works-1-05/04/2022

High Speed Two (HS2) Limited, registered in England and Wales.

Registered office: Two Snowhill, Snow Hill Queensway, Birmingham B4 6GA.

Company registration number: 06791686. VAT registration number: 888 8512 56