

Update - Construction of the TBM conveyor north of the Chiltern Line

May 2022 | www.hs2.org.uk

High Speed Two (HS2) is the new high speed railway for Britain.

We are following Government and Public Health England (PHE) advice on working safely during the pandemic. As we increase face to face engagement, in addition to virtual engagement, we will ensure all events and meetings adhere to the guidelines. The health and safety of our workforce and the communities we work within is our priority. If you have any questions about this, please contact our Helpdesk to find out more.

You can sign up for regular updates in your local area at www.hs2inHillingdon.co.uk

What we are doing

We wrote to you recently to let you know that we would be carrying out the construction of the TBM conveyor from 27 March to 1 July 2022. However, these works have been rescheduled and will now start on 21 May until 30 September 2022.

In the coming months, we will be carrying out works to construct and install the conveyor that will transport earth excavated from the tunnels at West Ruislip Portal to the treatment area, south of the Chiltern Line railway and the Copthall Tunnel for backfill. The area is shown on the map overleaf.

We will start constructing the foundation base and assembling the conveyor along the northern side of the Chiltern Line. This will require us to install four bridges, as shown overleaf.

Due to the proximity of these works to the Chiltern Line and for safety reasons, some activities will be carried out at night when trains are not running.

The first excavated earth from the tunnel will be stored in a designated area within the site boundary at West Ruislip Portal until November 2022. This will allow us to complete the construction of the conveyor up to the treatment area. The excavated earth will also be used for landscaping the golf course.

If you have a question about HS2 or our works, please contact our HS2 Helpdesk team on 08081 434 434 or email hs2enquiries@hs2.org.uk

Notification



Duration of works

From 21 May 2022 to 30 September 2022

Working hours are detailed on the page below

We may be on site for an hour before the start and/or end of each shift

What to expect

A gradual increase in the number of operatives and machinery in the area

Delivery of conveyor sections and set up of equipment, including excavators, cranes and concrete pumps

What we will do

Continue to monitor our work methods and minimise disruption

Instruct our staff to be mindful of our neighbours

Provide updates at HS2inHillingdon.co.uk

Update - Construction of the TBM conveyor north of the Chiltern Line

Notification



www.hs2.org.uk

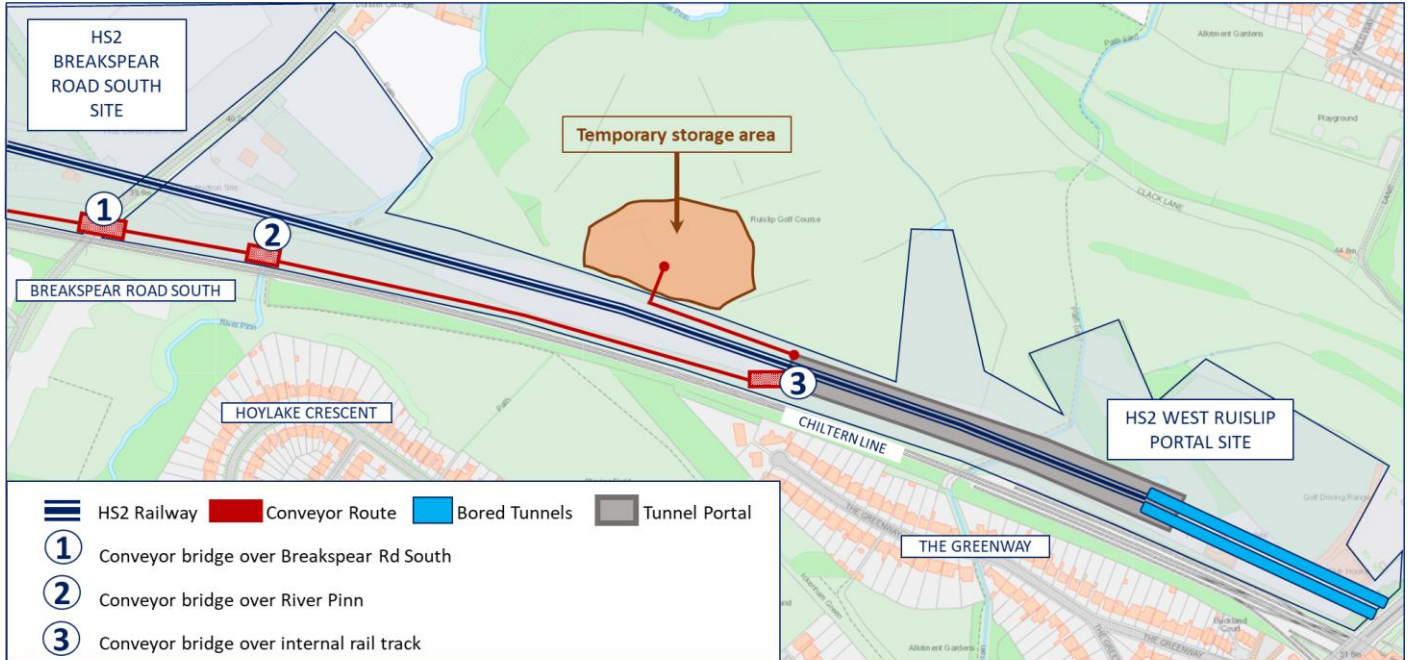
Upcoming works

Working hours	Location	Description of works
21 May to 5 June 2022 Monday to Saturday 8am to 6pm Monday to Friday and Sunday 10pm to 7am	North and south of the Chiltern line between Harvil road and Breakspear South	Preparation works and installation of abutments and bridges using a crane to lift into place during overnight rail possession
27 June to 5 September 2022 Monday to Saturday 8am to 6pm Monday to Friday 10pm to 7am	East of Breakspear Road South and west of the River Pinn	Excavation works for the foundation base installation
22 August to 26 September 2022 Monday to Saturday 8am to 6pm Monday to Friday 10pm to 7am	North of the rail bridge at Breakspear Road South	Lift and install the conveyor bridge over the road. A temporary road closure will be in place to ensure the installation can be carried out safely
20 June to 8 August 2022 Monday to Saturday 8am to 6pm Monday to Friday 10pm to 7am	River Pinn, north of the Chiltern Line	Excavation works for the foundation base installation
18 July to 29 August 2022 Monday to Saturday 8am to 6pm Monday to Friday 10pm to 7am	River Pinn, north of the Chiltern Line	Lift and install the conveyor bridge over the River Pinn
6 June to 11 July 2022 Monday to Saturday 8am to 6pm Monday to Friday 10pm to 7am	West Ruislip portal - Internal rail track overbridge	Excavation works for the foundation base installation, each side of the internal rail track west of the portal
25 July to 26 August 2022 These activities will be 24/7	West Ruislip portal - Internal rail track overbridge	Lifting of the conveyor bridge over the internal rail track
21 May to 27 August 2022 Monday to Saturday 8am to 6pm Monday to Friday 10pm to 7am	Extended storage conveyor area	Installation of foundation base and the conveyor

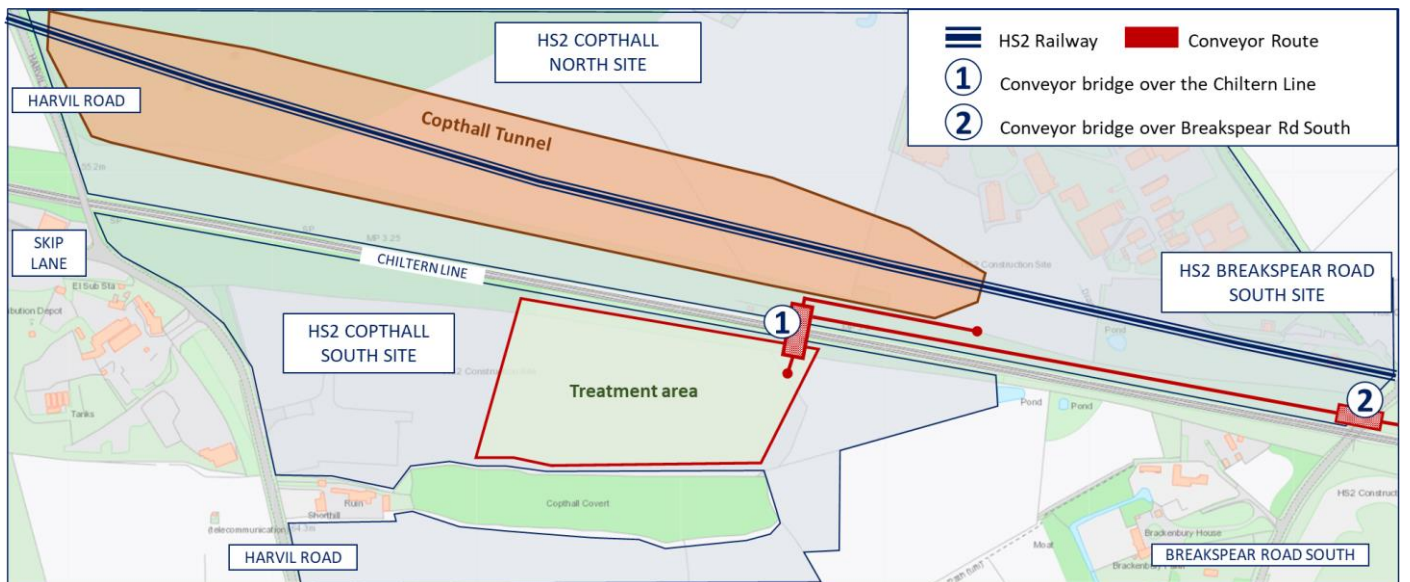
Contact our HS2 Helpdesk team on **08081 434 434**

Approximate location of conveyor installation

West Ruislip Portal to Breakspear Road South



Breakspear Road South to Treatment Area



Keeping you informed

We are committed to keeping you informed about work on HS2. This includes ensuring you know what to expect and when to expect it, as well as how we can help.

Residents' Charter and Commissioner

The Residents' Charter is our promise to communicate as clearly as we possibly can with people who live along or near the HS2 route.
www.gov.uk/government/publications/hs2-residents-charter

We also have an independent Residents' Commissioner whose job is to make sure we keep to the promises we make in the Charter and to keep it under constant review. Find reports at:
www.gov.uk/government/collections/hs2-ltd-residents-commissioner

You can contact the Commissioner at:
residentscommissioner@hs2.org.uk

Construction Commissioner

The Construction Commissioner's role is to mediate and monitor the way in which HS2 Ltd manages and responds to construction complaints. You can contact the Construction Commissioner by emailing:
complaints@hs2-cc.org.uk

Property and compensation

You can find out all about HS2 and properties along the line of route by visiting:
www.gov.uk/government/collections/hs2-property
Find out if you're eligible for compensation at:
www.gov.uk/claim-compensation-if-affected-by-hs2

Holding us to account

If you are unhappy for any reason you can make a complaint by contacting our HS2 Helpdesk team. For more details on our complaints process, please visit our website:
www.hs2.org.uk/how-to-complain

Contact Us

Contact our HS2 Helpdesk team all day, every day of the year on:

 Freephone **08081 434 434**

 Minicom **08081 456 472**

 Email **hs2enquiries@hs2.org.uk**

Write to:

FREEPOST

HS2 Community Engagement

Website **www.hs2.org.uk**

To keep up to date with what is happening in your local area, visit:
www.hs2inyourarea.co.uk

Please contact us if you'd like a free copy of this document in large print, Braille, audio or easy read. You can also contact us for help and information in a different language.

HS2 Ltd is committed to protecting personal information. If you wish to know more about how we use your personal information please see our Privacy Notice
<https://www.gov.uk/government/publications/high-speed-two-ltd-privacy-notice>

Reference number: HS2-MW-SCS-Ph1-Ar-So-S2-Prog-works-17-03/03/2022_02

High Speed Two (HS2) Limited, registered in England and Wales.
Registered office: Two Snowhill, Snow Hill Queensway, Birmingham B4 6GA.
Company registration number: 06791686. VAT registration number: 888 8512 56.

Call our HS2 Helpdesk team on **08081 434 434**