



Working on  
behalf of

# HS2

## Notification



# Overnight road closure and temporary lights, Birmingham Road, Coleshill

March 2022 | [www.hs2.org.uk](http://www.hs2.org.uk)

High Speed Two (HS2) is the new high speed railway for Britain. Early works for HS2 are carried out by a joint venture between Laing O'Rourke and Murphy & Sons known as LM.

## There will be a temporary road closure

As part of our continuing work to demolish and dismantle buildings in Coleshill and carry out vegetation clearance there will be a temporary overnight closure of the B4114 Birmingham Road from 8pm on Tuesday 29 March to 6am on Wednesday 30 March. A signed diversion will be in place and access to properties will be maintained.

## Temporary traffic lights and layby closure

This overnight closure will be followed by the closure of the eastbound lane of Birmingham Road and the installation of temporary traffic lights from Wednesday 30 March to the end of September. In addition, the layby off the westbound lane of Birmingham Road will also be closed. This traffic management will be clearly signed.

We are continually reviewing works on our construction sites in line with Government and Public Health England (PHE) advice on dealing with COVID-19. The Government's current COVID-19 strategy makes clear that construction activity can continue as long as it complies with this guidance.

The health and safety of our workforce and the communities we affect is our key priority. Please be assured that those sites that are currently still working are doing so because they can operate within PHE and construction industry guidelines.

**If you have a question about HS2 or our works, please contact our helpdesk on 08081 434 434 or email [HS2enquiries@hs2.org.uk](mailto:HS2enquiries@hs2.org.uk)**

## Duration of works

Tuesday 29 March to the end of Sept (subject to weather and site conditions). Working hours: Monday to Friday, 8.00am to 5.00pm (we may be on site for up to one hour before and after to set-up and to make the site secure).

## What to expect

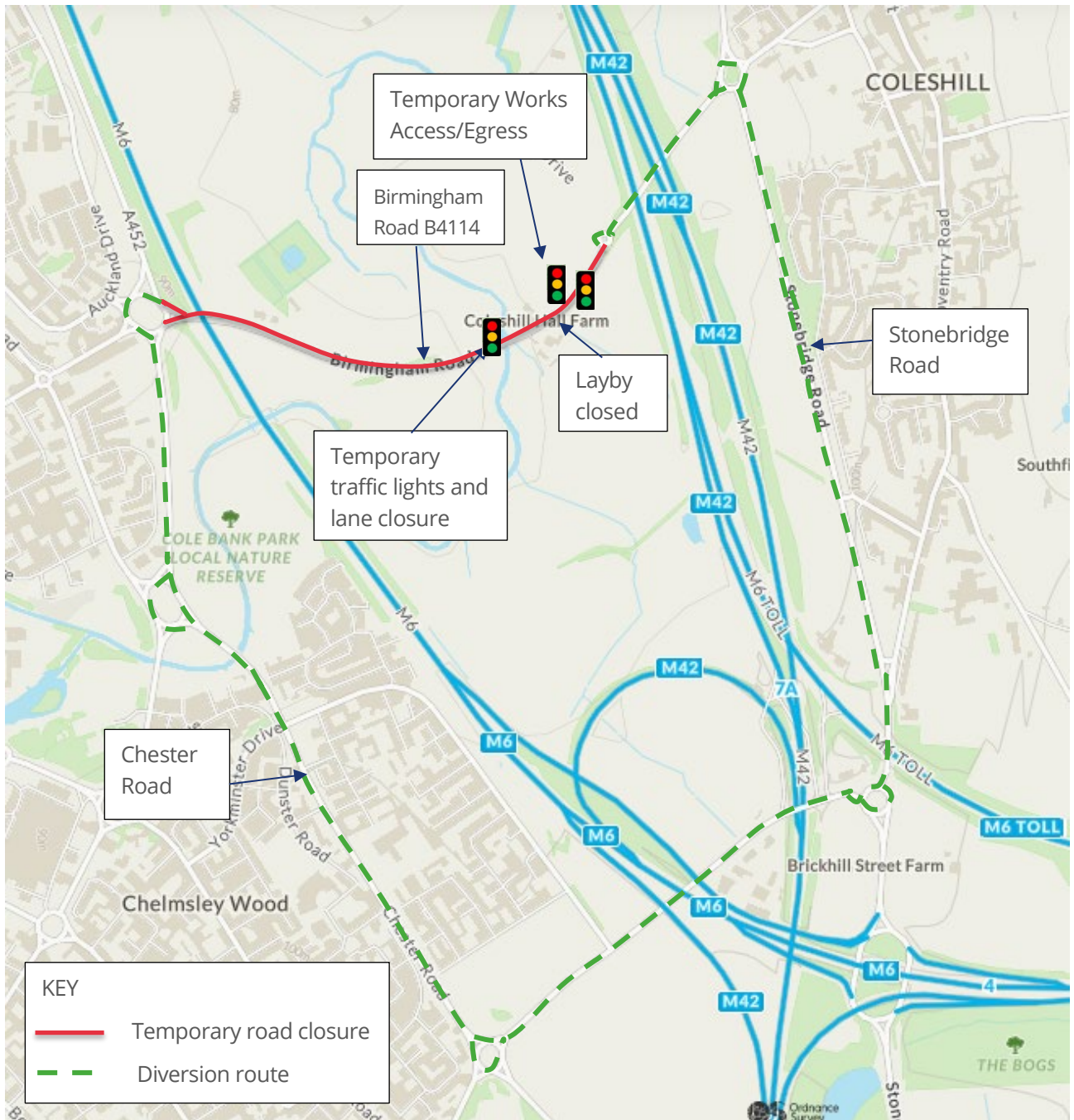
Temporary overnight closure of Birmingham Road between 8pm on Tuesday 29 March to 6am on Wednesday 30 March. Temporary traffic lights and closure of layby March 30 to end of September.

## What we will do

Keep sites safe and secure, disruption to a minimum and ensure traffic management is clearly signed.

Sign up for regular updates at: [hs2inwarwickshire.co.uk](http://hs2inwarwickshire.co.uk)

# Traffic management associated with demolition works



Contains Ordnance Survey ©Crown copyright and database right 2017

# What else is happening in your area?

## About our Community and Business Funds

We are offering two funds that are available to local communities and businesses in Birmingham and the West Midlands, to help with the disruption caused by our construction work. These are the Community and Environment Fund (CEF) and the Business and Local Economy Fund (BLEF).

The CEF is designed to give communities the opportunity to share in the benefits of HS2. It is an allocated fund that communities are able to apply for, to help to support local projects that aim to improve their local area.

The BLEF is designed to support local economies that may be disrupted by the construction of HS2. BLEF grants are for local business support organisations and local authorities to help maintain business activity in local communities.

For more information about each of these funds, including how to apply, please visit: [www.groundwork.org.uk/hs2funds](http://www.groundwork.org.uk/hs2funds)



## About our community websites

The planning and construction of HS2 is a huge operation – it is currently the largest infrastructure project in Europe.

It's important to us that you are kept up to date about the progress of the Project and any work that may impact you or your community. We have a series of community-focused websites where you can find out what is happening in your local area and sign up for updates about our activities. Our community sites currently serve Birmingham, Solihull, Staffordshire and Warwickshire. More sites are being prepared to serve other areas.

To find your local community website, visit: <https://hs2.commonplace.is/>

For further information about Phase 2a and Phase 2b, visit:

<https://www.gov.uk/government/organisations/high-speed-two-limited>



# Keeping you informed

We are committed to keeping you informed about work on HS2. This includes ensuring you know what to expect and when to expect it, as well as how we can help.

## Residents' Charter and Commissioner

The Residents' Charter is our promise to communicate as clearly as we possibly can with people who live along or near the HS2 route.  
[www.gov.uk/government/publications/hs2-residents-charter](http://www.gov.uk/government/publications/hs2-residents-charter)

We also have an independent Residents' Commissioner whose job is to make sure we keep to the promises we make in the Charter and to keep it under constant review. Find reports at:  
[www.gov.uk/government/collections/hs2-ltd-residents-commissioner](http://www.gov.uk/government/collections/hs2-ltd-residents-commissioner)  
You can contact the Commissioner at:  
[residentscommissioner@hs2.org.uk](mailto:residentscommissioner@hs2.org.uk)

## Construction Commissioner

The Construction Commissioner's role is to mediate and monitor the way in which HS2 Ltd manages and responds to construction complaints. You can contact the Construction Commissioner by emailing:  
[complaints@hs2-cc.org.uk](mailto:complaints@hs2-cc.org.uk)

## Property and compensation

You can find out all about HS2 and properties along the line of route by visiting:  
[www.gov.uk/government/collections/hs2-property](http://www.gov.uk/government/collections/hs2-property)  
Find out if you're eligible for compensation at:  
[www.gov.uk/claim-compensation-if-affected-by-hs2](http://www.gov.uk/claim-compensation-if-affected-by-hs2)

## Holding us to account

If you are unhappy for any reason you can make a complaint via the helpline. For more details on our complaints process, please visit our website:  
[www.hs2.org.uk/how-to-complain](http://www.hs2.org.uk/how-to-complain)

## Contact Us

If you have any questions about this notification of works, please get in touch.



24/7 Freephone **08081 434 434**



Minicom **08081 456 472**



Email **[HS2enquiries@hs2.org.uk](mailto:HS2enquiries@hs2.org.uk)**

Write to:

**FREEPOST**

**HS2 Community Engagement**

Website **[www.hs2.org.uk](http://www.hs2.org.uk)**

To keep up to date with what is happening in your local area, visit:  
[hs2inwarwickshire.co.uk](http://hs2inwarwickshire.co.uk)

**Please contact us if you'd like a free copy of this document in large print, Braille, audio or easy read. You can also contact us for help and information in a different language.**

HS2 Ltd is committed to protecting personal information. If you wish to know more about how we use your personal information please see our Privacy Notice  
<https://www.gov.uk/government/publications/high-speed-two-ltd-privacy-notice>

Reference number: HS2-EW-LM-Ph1-Ar-No-N2-Prog-works-42-16/12/2021

High Speed Two (HS2) Limited, registered in England and Wales.

Registered office: Two Snow Hill, Snow Hill Queensway, Birmingham B4 6GA.

Company registration number: 06791686. VAT registration number: 181 4312 30.

24/7 Community Freephone Helpline **08081 434 434**