

# Notice of concrete batching plant installation

March 2022 | [www.hs2.org.uk](http://www.hs2.org.uk)

## Notification



High Speed Two (HS2) is the new high speed railway for Britain.

We are continually reviewing the works on our construction sites in line with Government and Public Health England (PHE) advice on dealing with COVID-19. The Government's current strategy makes it clear that construction activity can continue as long as it complies with this guidance. Please be assured that only sites that can operate within the guidelines are operational. All sites will remain under constant review.

## Installation of concrete batching plant

We are installing a temporary concrete batching plant on-site that will be used to manufacture ready-mixed concrete for the construction of the new Old Oak Common Station. All work will take place within the existing Old Oak Common worksite.

We will deliver steelwork components by road using HGV lorries during normal working hours. The batching plant will be erected using a mobile crane and will include four steel silo tanks which will be installed vertically, and will be approximately 15.5 metres high.

## Constructing aggregate storage bays

While the batching plant is being erected and commissioned, we will also be installing precast concrete panels that will form the storage bays for the materials being used to make the concrete. This will involve lifting panels into place to form the bays. These will be drilled into place.

### Duration of works

Work will start from 12 March until 30 June, between 8am- 6pm Monday to Friday, and 8am to 1pm on Saturdays. On 12 March works are anticipated to be completed by 1pm. Due to the type of work taking place the working hours may need to be extended

### What to expect

Deliveries of batching plant equipment and machinery involving cranes to put machinery together.

The temporary machinery and equipment will include four tall silos used to store materials to make concrete.

### What we will do

Erect and commission a temporary concrete batching plant for the construction of Old Oak Common.

# Notice of concrete batching plant installation

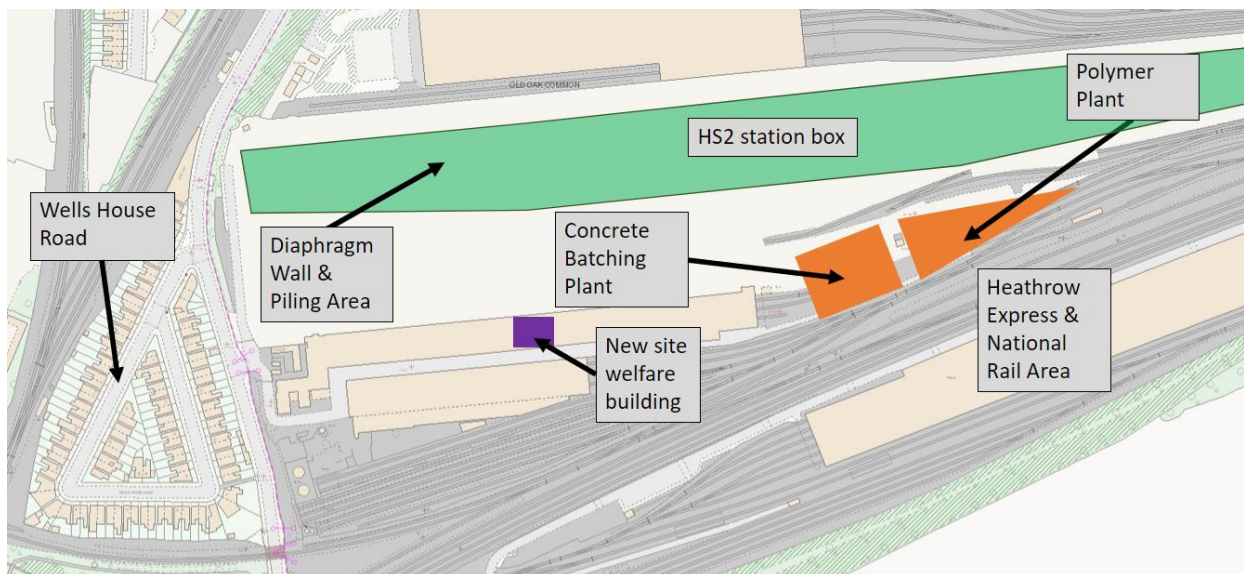
Notification



[www.hs2.org.uk](http://www.hs2.org.uk)

## Commissioning the plant

When the concrete batching plant has been set-up, there will be a period of commissioning that will involve deliveries of cement and other materials. These will be used to produce trial mixes of the ready-mix concrete required to build Old Oak Common station. The commissioning process will start from 16 April until 30 June. The batching plant will be fully operational on 1 July.



Contact our HS2 Helpdesk team on **08081 434 434**

# Keeping you informed

We are committed to keeping you informed about work on HS2. This includes ensuring you know what to expect and when to expect it, as well as how we can help you.

## The Residents' Commissioner

The independent Residents' Commissioner oversees and monitors our commitments to you.

The commissioner's reports and our responses can be found at [www.gov.uk/government/collections/hs2-ltd-residents-commissioner](http://www.gov.uk/government/collections/hs2-ltd-residents-commissioner)

The Residents' Commissioner makes sure we fulfil the commitments in the HS2 Community Engagement Strategy (<https://bit.ly/3oOA25j>).

The Residents' Commissioner can be contacted on: [residentscommissioner@hs2.org.uk](mailto:residentscommissioner@hs2.org.uk)

## Construction Commissioner

The independent Construction Commissioner regularly meets our Chief Executive Officer to raise any concerns or emerging trends across HS2.

The Construction Commissioner's role has been developed to monitor the way we manage and respond to construction complaints.

The commissioner mediates on disputes about construction, involving individuals and organisations, that we can't resolve. The commissioner advises members of the public about how to make a complaint about construction.

The Construction Commissioner can be contacted on: [complaints@hs2-cc.org.uk](mailto:complaints@hs2-cc.org.uk)

## Property and compensation

You can find out about HS2 and properties along the route by visiting:

[www.gov.uk/government/collections/hs2-property](http://www.gov.uk/government/collections/hs2-property)

Find out if you can claim compensation at:

[www.gov.uk/claim-compensation-if-affected-by-hs2](http://www.gov.uk/claim-compensation-if-affected-by-hs2)

## Holding us to account

If you are unhappy for any reason you can make a complaint by contacting the HS2 Helpdesk. For more details on our complaints process, please visit:

[www.hs2.org.uk/in-your-area/contact-us/how-to-complain/](http://www.hs2.org.uk/in-your-area/contact-us/how-to-complain/)

## Contact us

Contact our HS2 Helpdesk team all day, every day of the year on:

 Freephone **08081 434 434**

 Minicom **08081 456 472**

 Email **HS2enquiries@hs2.org.uk**

Write to:

**FREEPOST**

**HS2 Community Engagement**

Website **[www.hs2.org.uk](http://www.hs2.org.uk)**

To keep up to date with what is happening in your local area, visit:  
**[www.HS2inyourarea.co.uk](http://www.HS2inyourarea.co.uk)**

**Please contact us if you'd like a free copy of this document in large print, Braille, audio or 'easy read' format. You can also contact us for help and information in a different language.**

HS2 Ltd is committed to protecting personal information. If you wish to know more about how we use your personal information please see our Privacy Notice:

<https://www.gov.uk/government/publications/high-speed-two-ltd-privacy-notice>

**Reference number:** HS2-MW-BBVS-Ph1-OOC-St-S4-prog-works-09-25/03/2022

High Speed Two (HS2) Limited, registered in England and Wales.

Registered office: Two Snowhill, Snow Hill Queensway, Birmingham B4 6GA.

Company registration number: 06791686. VAT registration number: 888 8512 56