

Notice of works to install additional welfare facilities at Adelaide Road

February 2022 | www.hs2.org.uk

High Speed Two (HS2) is the new high speed railway for Britain.

We are continually reviewing the works on our construction sites in line with Government and Public Health England (PHE) advice on dealing with COVID-19. You can sign up for regular updates in your local area at www.hs2.org.uk.

Installation of site offices and welfare units

As part of our works to prepare for the construction of the ventilation shaft, we wrote to you last year about the installation of temporary welfare and office facilities on the eastern end of the Adelaide Road site. However, as part of our ongoing works to set up our site, we will now be installing additional permanent site office and welfare units next to the current temporary units.

To allow the additional welfare and offices to be installed, we have removed the eastern access gate and closed this section with the site hoarding. These works are due to take place from 7 March 2022 for up to 3 weeks.

What might you see?

There will be an increase in construction vehicles to the Adelaide Road site during these works, but we will not exceed the level of vehicles movements agreed with Camden Council.

We will use a 90-tonne crane to lift the units into site. The crane will be located on the eastern end of our site, near Beaumont Walk and Constable House.

All works will be completed within the current lane closure on Adelaide Road. No additional lane closures or traffic lights will be required.

The units will be two storeys high with a staircase on the side for access onto the first floor. A map showing the location can be found on page two.

If you have a question about HS2 or our works, please contact our HS2 Helpdesk team on 08081 434 434 or email HS2enquiries@hs2.org.uk

Notification



Duration of works

From 7 March 2022 until 27 March 2022

8am to 6pm, Monday to Fridays and 8am to 1pm, Saturdays

We may be on site for an hour before the start and/or end of each shift

What to expect

Works will take place inside the current lane closure on Adelaide Road

90-tonne crane located on the eastern end of our site

Removal of the eastern access gate and installation of additional welfare and office facilities

You may notice additional noise during parts of these works

What we will do

Advise our staff to be mindful of our neighbours

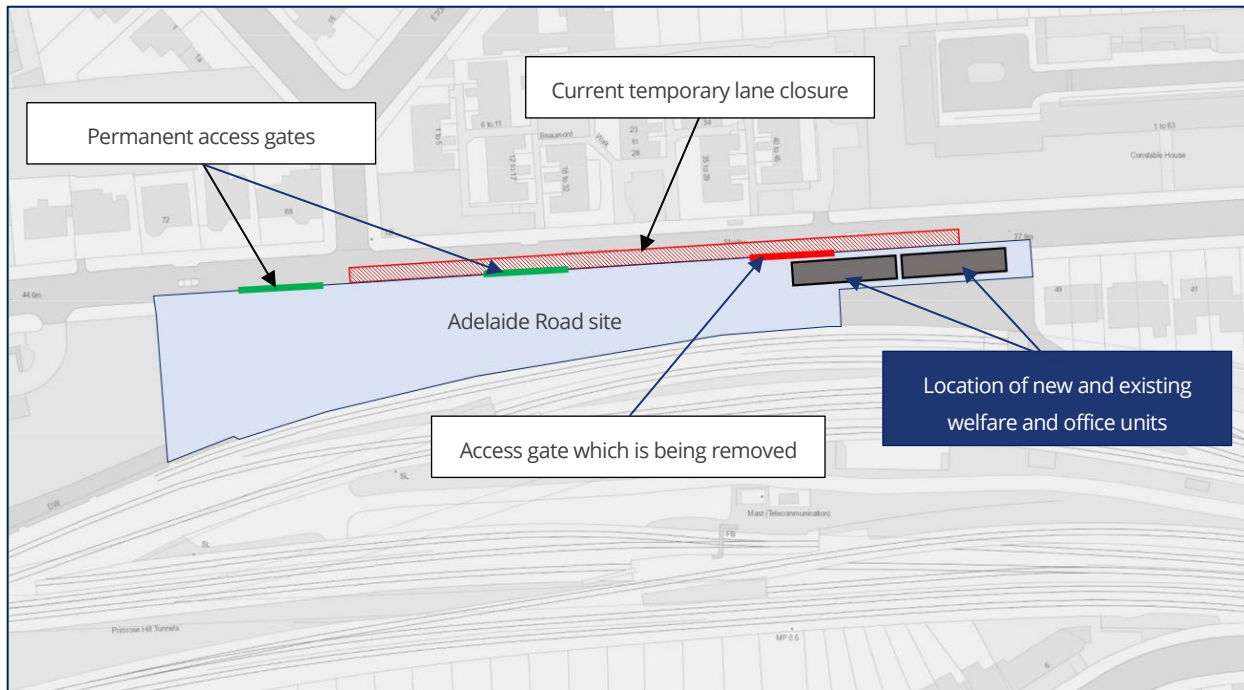
We'll provide updates at HS2.org.uk/in-your-area/

Notice of works to install additional welfare facilities at Adelaide Road

Notification



www.hs2.org.uk



Community update event

We will be holding an online information event on 24 February 2022 from 6pm to 7pm to talk about works at our Adelaide Road site.

At this event you will find out more about:

- upcoming works (within site)
- measures in place to minimise disruption to our neighbours

Our team of experts will provide a presentation at 6pm. Following this, you'll be able to ask any questions you may have about our works.

You can sign up by visiting hs2.org.uk/events/

Speak with our community engagement team

We are holding monthly virtual one to ones where you can speak with our community engagement team. Our next virtual one to one will be on **Wednesday 16 March between 3pm to 6pm**. You can book a 20-minute session to speak with our Community Engagement teams about works at the Adelaide Road site at hs2.org.uk/events. The sessions will take place on Microsoft Teams.

The dates mentioned in this notification may change due to unforeseen circumstances. We will provide updates about our works at HS2incamden.co.uk

Contact our HS2 Helpdesk team on **08081 434 434**

What else is happening in your area?

www.hs2.org.uk

Contact our HS2 Helpdesk team

Our team is here to listen and respond to your enquiry, complaint, or feedback to help us be a good neighbour.

You can contact our Helpdesk team all day, every day of the year on:

Freephone: **08081 434 434**

Minicom: **08081 456 472**

Email: hs2enquiries@hs2.org.uk

Keep up-to-date with your local community website

To find out more about what's happening in your area and receive regular email updates, you can sign up to our local community websites at: www.hs2inyourarea.co.uk.

About our Community and Business Funds

We are offering two funds that are available to local communities and businesses between the West Midlands and London, to help with the disruption caused by our construction work. These are the Community and Environment Fund (CEF) and the Business and Local Economy Fund (BLEF).

The CEF is designed to give communities the opportunity to share in the benefits of HS2. It is an allocated fund that communities are able to apply for, to help to support local projects that aim to improve their local area.

The BLEF is designed to support local economies that may be disrupted by the construction of HS2. BLEF grants are for local business support organisations and local authorities to help maintain business activity in local communities.

For more information about each of these funds, including how to apply, please visit: <https://www.groundwork.org.uk/hs2funds>



Keeping you informed

We are committed to keeping you informed about work on HS2. This includes ensuring you know what to expect and when to expect it, as well as how we can help you.

The Residents' Commissioner

The independent Residents' Commissioner oversees and monitors our commitments to you.

The commissioner's reports and our responses can be found at www.gov.uk/government/collections/hs2-ltd-residents-commissioner

The Residents' Commissioner makes sure we fulfil the commitments in the HS2 Community Engagement Strategy (<https://bit.ly/3oOA25j>).

The Residents' Commissioner can be contacted on: residentscommissioner@hs2.org.uk

Construction Commissioner

The independent Construction Commissioner regularly meets our Chief Executive Officer to raise any concerns or emerging trends across HS2.

The Construction Commissioner's role has been developed to monitor the way we manage and respond to construction complaints.

The commissioner mediates on disputes about construction, involving individuals and organisations, that we can't resolve. The commissioner advises members of the public about how to make a complaint about construction.

The Construction Commissioner can be contacted on: complaints@hs2-cc.org.uk

Property and compensation

You can find out about HS2 and properties along the route by visiting: www.gov.uk/government/collections/hs2-property

Find out if you can claim compensation at: www.gov.uk/claim-compensation-if-affected-by-hs2

Holding us to account

If you are unhappy for any reason you can make a complaint by contacting the HS2 Helpdesk. For more details on our complaints process, please visit:

www.hs2.org.uk/in-your-area/contact-us/how-to-complain/

Reference number: HS2-EW-SCS-Ph1-Ar-So-S1-Prog-works-1-03/02/2022

Somali

Fadlan nala soo xiriir haddii bug-yarahaan bilaashka ah ku rabtid daabacad far waa-wayn, qoraalka indhoolaha, hab maqal ah ama si fudud loo akhrin karo. Waxaan xittaa macluumaadka ku bixin karnaa luqado kala duwan. Qof ayaad ka codsan kartaa inuu wakiil ka noqdo markaad la hadlayso HS2 Ltd.

Español

Póngase en contacto con nosotros en caso de que desee recibir una copia gratuita de este folleto en caracteres grandes, braille, audio o en formato de lectura fácil. También podemos proporcionar la información en distintos idiomas. No dude en pedirle a alguien que le represente en cualquier conversación con HS2, Ltd.

Français

Merci de nous contacter si vous désirez une copie de cette brochure en grands caractères, en braille, en version audio, ou en lecture simplifiée. Nous pouvons également vous fournir des informations dans différentes langues. Vous pouvez demander d'être représenté(e) par un tiers pour tout échange avec HS2 Ltd.

Bengali

যদি আপনি এই প্রচারপত্রটির বড় অক্ষরে, ব্রেইলে, অডিও বা সহজ পাঠযোগ্য বিনামূল্যের প্রতিলিপি পেতে চান তবে অনুগ্রহ করে আমাদের সাথে যোগাযোগ করুন। এছাড়াও আমরা বিভিন্ন ভাষায় তথ্য প্রদান করতে পারি। এইচএস২ লিমিটেড (HS2 Ltd.)-এর সাথে কোন আলোচনায় আপনাকে প্রতিনিধিত্ব করার জন্য আপনি কাউকে জিজ্ঞাসা করায় আপনাকে স্বাগত জানাই।

Contact us

Contact our HS2 Helpdesk team all day, every day of the year on:

 Freephone **08081 434 434**

 Minicom **08081 456 472**

 Email **HS2enquiries@hs2.org.uk**

Write to:

FREEPOST

HS2 Community Engagement

Website **www.hs2.org.uk**

To keep up to date with what's happening in your local area, visit: **www.HS2inyourarea.co.uk**

Please contact us if you'd like a free copy of this document in large print, Braille, audio or 'easy read' format. You can also contact us for help and information in a different language.

HS2 Ltd is committed to protecting personal information. If you wish to know more about how we use your personal information please see our Privacy Notice <https://www.gov.uk/government/publications/high-speed-two-ltd-privacy-notice>

High Speed Two (HS2) Limited, registered in England and Wales. Registered office: Two Snowhill, Snow Hill Queensway, Birmingham B4 6GA. Company registration number: 06791686. VAT registration number: 888 8512 56