

Notice of survey works at Wood End Lane, Lichfield

January 2022 | www.hs2.org.uk

High Speed Two (HS2) is the new high speed railway for Britain. Working on behalf of HS2 Ltd, Balfour Beatty is carrying out surveys and investigating ground conditions along the Phase 2a route.

What we are doing

HS2 Ltd is proposing changes to the junction of the A515 and Wood End Lane, with further widening to Wood End Lane. This is to improve traffic flows during the construction of HS2. To design the changes, Balfour Beatty has been carrying out ongoing surveys during late-2021.

To complete these surveys safely along the A515 and in the adjacent fields, we need to set up 3-way temporary traffic lights during the day at the junction of the A515 and Wood End Lane from Monday 31 January for three days.

The 3-way lights will allow us to keep the junction open as usual. There may be occasions when we are installing or amending the traffic management, where we have to stop all traffic for a few minutes for safety reasons. We will get you on your way as quickly as possible.

The work will involve some digging using equipment like excavators and small borehole rigs. Some of these activities are likely to generate some noise but this will not be persistent throughout the day. The work is taking place in fields, away from nearby houses. This should limit any effect this may have on people living and working from home during this time.

If you have a question about HS2 or our works, please contact our HS2 Helpdesk team on 08081 434 434 or email hs2enquiries@hs2.org.uk

Notification



Duration of works

31 January to
2 February 2022

Our working hours will be 8am to 6pm (Mon – Wed)

We will be onsite one hour either side of these times to set-up and close-down the worksite

What to expect

Some noise from our machinery during working hours

Temporary daytime traffic signals on A515/ Wood End Lane junction

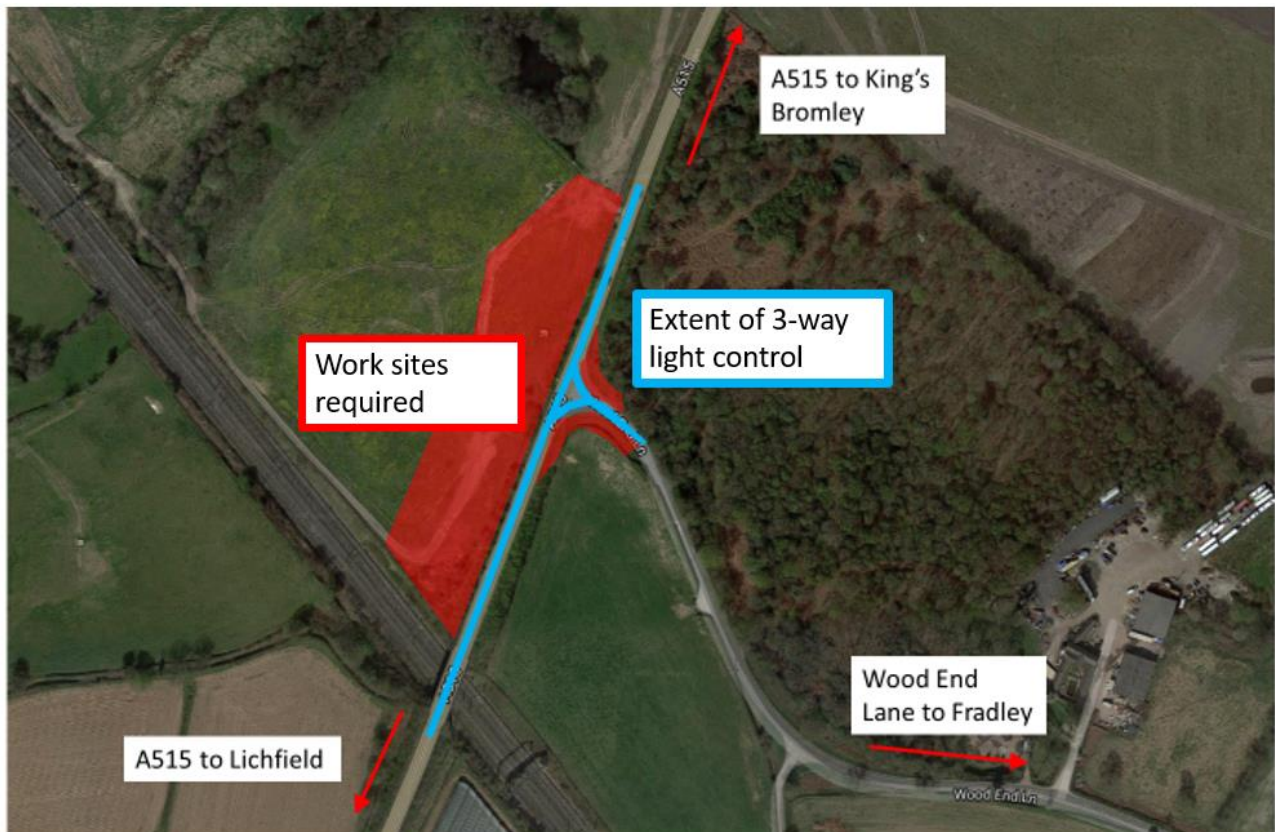
We will inform people of any changes in advance.

How will this affect you?

While there may be some low-level noise along with the temporary 3-way traffic lights, we will aim to minimise the disruption to the local community by installing sound barriers around the perimeter of excavation or drilling equipment to reduce noise levels.

The work will not affect access to residential properties.

Where we will be working



 3-way daytime traffic signals at the A515 junction.

What else is happening in your area?

www.hs2.org.uk

Contact our HS2 Helpdesk team

Our team is here to listen and respond to your enquiry, complaint or feedback to help us be a good neighbour.

You can contact our Helpdesk team all day, every day of the year on:

Freephone: **08081 434 434**

Minicom: **08081 456 472**

Email: hs2enquiries@hs2.org.uk

Keep up-to-date with your local community website

To find out more about what's happening in your area and receive regular email updates, you can sign up to our local community websites at: www.hs2inyourarea.co.uk.

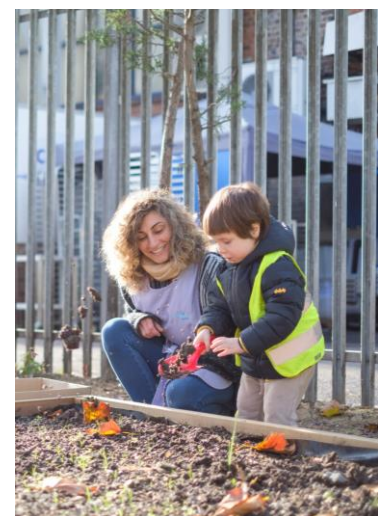
About our Community and Business Funds

Two funds are now open for applications from local communities and businesses affected by the construction of HS2. They are the Community and Environment Fund (CEF) and the Business and Local Economy Fund (BLEF). £5 million has been allocated to the funds for phase 2a of the railway.

The CEF is designed to give communities the opportunity to share in the benefits of HS2. It is an allocated fund that communities are able to apply for, to help to support local projects that aim to improve their local area.

The BLEF is designed to support local economies that may be disrupted by the construction of HS2. BLEF grants are for local business support organisations and local authorities to help maintain business activity in local communities.

For more information about each of these funds, including how to apply, please visit: <https://www.groundwork.org.uk/hs2funds>



Keeping you informed

We are committed to keeping you informed about work on HS2. This includes ensuring you know what to expect and when to expect it, as well as how we can help.

Residents' Charter and Commissioner

The Residents' Charter is our promise to communicate as clearly as we possibly can with people who live along or near the HS2 route.
www.gov.uk/government/publications/hs2-residents-charter

We also have an independent Residents' Commissioner whose job is to make sure we keep to the promises we make in the Charter and to keep it under constant review. Find reports at:
www.gov.uk/government/collections/hs2-ltd-residents-commissioner

You can contact the Commissioner at:
residentscommissioner@hs2.org.uk

Construction Commissioner

The Construction Commissioner's role is to mediate and monitor the way in which HS2 Ltd manages and responds to construction complaints. You can contact the Construction Commissioner by emailing:
complaints@hs2-cc.org.uk

Property and compensation

You can find out all about HS2 and properties along the line of route by visiting:
www.gov.uk/government/collections/hs2-property
Find out if you're eligible for compensation at:
www.gov.uk/claim-compensation-if-affected-by-hs2

Holding us to account

If you are unhappy for any reason you can make a complaint by contacting our HS2 Helpdesk team. For more details on our complaints process, please visit our website:
www.hs2.org.uk/how-to-complain

Contact Us

Contact our HS2 Helpdesk team all day, every day of the year on:

 Freephone **08081 434 434**

 Minicom **08081 456 472**

 Email **hs2enquiries@hs2.org.uk**

Write to:

FREEPOST

HS2 Community Engagement

Website **www.hs2.org.uk**

To keep up to date with what is happening in your local area, visit:
www.hs2instaffordshire.co.uk

Please contact us if you'd like a free copy of this document in large print, Braille, audio or easy read. You can also contact us for help and information in a different language.

HS2 Ltd is committed to protecting personal information. If you wish to know more about how we use your personal information please see our Privacy Notice
<https://www.gov.uk/government/publications/high-speed-two-ltd-privacy-notice>

Helpdesk reference: HS2-EW-BB-Ph2a-GI-01-13/01/2022

High Speed Two (HS2) Limited, registered in England and Wales.
Registered office: Two Snowhill, Snow Hill Queensway, Birmingham B4 6GA.
Company registration number: 06791686. VAT registration number: 181 4312 30.