



Notification of survey works on A446 Lichfield Road, Coleshill

January 2022 | www.hs2.org.uk

High Speed Two (HS2) is the new high speed railway for Britain. Balfour Beatty VINCI (BBV) is working in partnership with HS2 Ltd to build the new high speed railway in your area.

The work we will be doing

Subject to consents, we will be undertaking survey works on the A446 Lichfield Road, which will help us understand what is under the road surface.

When these works will take place

We will complete three nights of survey works from Tuesday 1 February to Friday 4 February from 9pm - 5am. To carry out our works safely we will implement a full closure northbound and southbound on the A446 between Gorsey Lane and Marsh Lane. As a result, the junction at Watton Lane will also be closed. There will be a diversion in place throughout these closures, this is shown in the below map.

HS2 during the COVID-19 pandemic

We are continually reviewing the works on our construction sites in line with the Government and Public Health England (PHE) advice on dealing with coronavirus. The Government's current coronavirus strategy makes clear that construction activity can continue as long as it complies with this guidance. The health and safety of our workforce and the communities we affect is our key priority. Please be assured that those sites that are currently still working are doing so because they can operate within PHE and construction industry guidelines.

If you have a question about HS2 or our works, please contact our HS2 Helpdesk team on 08081 434 434 or email hs2enquiries@hs2.org.uk

What work will we be doing?

- Subject to consents, we will complete survey works
- Implementation of a full overnight closure with a diversion in place

What to expect

- Three nights of survey works from 1 February to 4 February
- Working hours are 9pm until 5am
- Our workforce on site 1 hour before and after to set up and take down equipment

What we will do

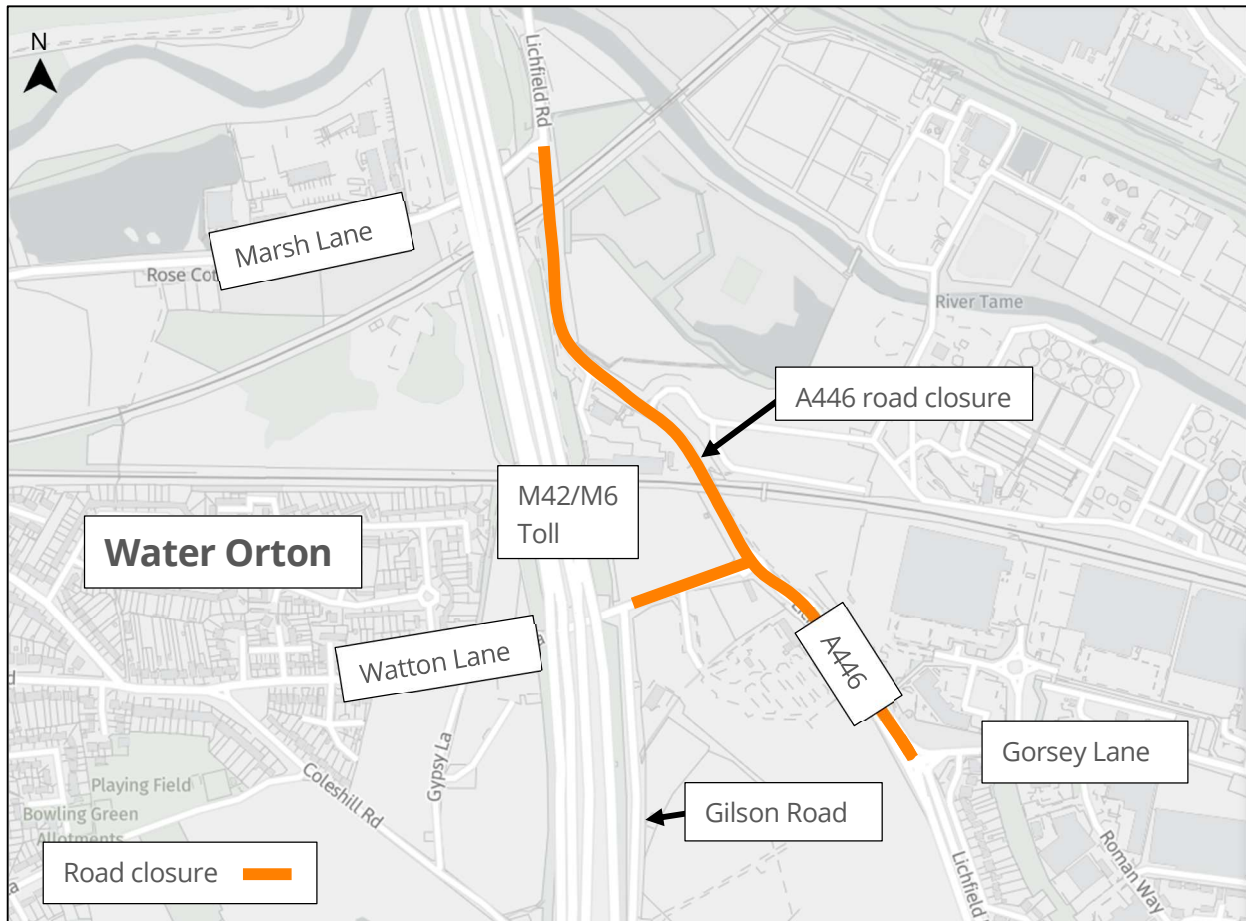
- Keep all work areas safe and secure
- Provide updates on hs2inwarwickshire.co.uk

Notification of survey works on A446 Lichfield Road, Coleshill

www.hs2.org.uk

Map to outline the location of works and closure

Notification



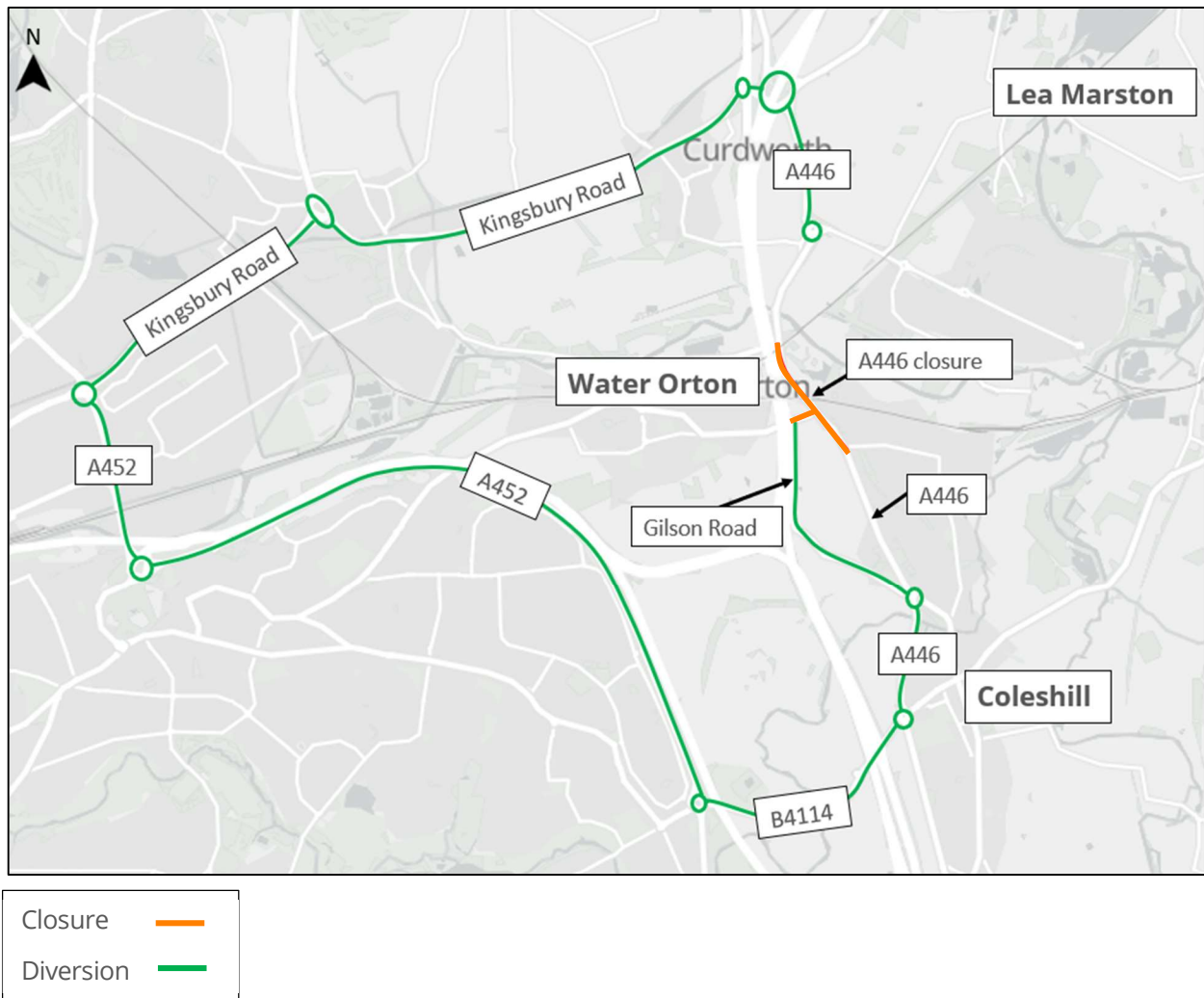
Contact our HS2 Helpdesk team on **08081 434 434**

Notice of survey works on A446 Lichfield Road, Coleshill

www.hs2.org.uk



Map to outline the diversion



Contact our HS2 Helpdesk team on **08081 434 434**

Keeping you informed

We are committed to keeping you informed about work on HS2. This includes ensuring you know what to expect and when to expect it, as well as how we can help.

Residents' Charter and Commissioner

The Residents' Charter is our promise to communicate as clearly as we possibly can with people who live along or near the HS2 route.
www.gov.uk/government/publications/hs2-residents-charter

We also have an independent Residents' Commissioner whose job is to make sure we keep to the promises we make in the Charter and to keep it under constant review. Find reports at:
www.gov.uk/government/collections/hs2-ltd-residents-commissioner

You can contact the Commissioner at:
residentscommissioner@hs2.org.uk

Construction Commissioner

The Construction Commissioner's role is to mediate and monitor the way in which HS2 Ltd manages and responds to construction complaints. You can contact the Construction Commissioner by emailing:
complaints@hs2-cc.org.uk

Property and compensation

You can find out all about HS2 and properties along the line of route by visiting:
www.gov.uk/government/collections/hs2-property
Find out if you're eligible for compensation at:
www.gov.uk/claim-compensation-if-affected-by-hs2

Holding us to account

If you are unhappy for any reason you can make a complaint by contacting our HS2 Helpdesk team. For more details on our complaints process, please visit our website:
www.hs2.org.uk/how-to-complain

Contact Us

Contact our HS2 Helpdesk team all day, every day of the year on:

 Freephone **08081 434 434**

 Minicom **08081 456 472**

 Email **hs2enquiries@hs2.org.uk**

Write to:

FREEPOST

HS2 Community Engagement

Website **www.hs2.org.uk**

To keep up to date with what is happening in your local area, visit:
www.hs2inyourarea.co.uk

Please contact us if you'd like a free copy of this document in large print, Braille, audio or easy read. You can also contact us for help and information in a different language.

HS2 Ltd is committed to protecting personal information. If you wish to know more about how we use your personal information please see our Privacy Notice
<https://www.gov.uk/government/publications/high-speed-two-ltd-privacy-notice>

Reference number: HS2-MW-BBV-Ph1-Ar-No-N2-Prog-works-13-13/01/2022

High Speed Two (HS2) Limited, registered in England and Wales.

Registered office: Two Snowhill, Snow Hill Queensway, Birmingham B4 6GA.

Company registration number: 06791686. VAT registration number: 888 8512 56.