

Notice of Installation of Open Cut Drainage in Wormwood Scrubs

January 2022 | www.hs2.org.uk

High Speed Two (HS2) is the new high speed railway for Britain

We are following Government and Public Health England (PHE) advice on working safely during the pandemic. As we increase face to face engagement, in addition to virtual engagement, we will ensure all events and meetings adhere to the guidelines. The health and safety of our workforce and the communities we work within is our priority. If you have any questions about this, please contact our Helpdesk to find out more.

We are continuing our work to divert utilities cables and an existing sewer on Wormwood Scrubs. You can find out more about our works, including our latest works updates here: <https://www.hs2.org.uk/in-your-area/local-community-webpages/hs2-in-old-oak-and-north-acton/wormwood-scrubs/>

Piping installation for sewer diversion on Wormwood Scrubs

We will be installing concrete piping as part of the sewer diversion works on Wormwood Scrubs. This will involve installing sheet piles to build a large diameter trench.

To complete this work a trench must be excavated to install each piece of pipe. Diggers will be used to dig the trench. Following completion of the trench, the digger will be used to backfill the ground around the trenches and to remove the piles. The sheet piles will be pushed into ground by a digger as shown in the image below. This will create a wall around where the trenches are being dug. The same digger will also excavate inside the trench to allow for the new sewer.



Notification



Duration of works

Construction will commence from 19 January 2022 until 7 March 2022, between 8am and 6pm Monday to Friday and 8am and 1pm on Saturdays if required.

What to expect

Digger movement, concrete wagons, muck away lorries, sheet piling and excavation.

What we will do

We will use best practicable means to minimise any impact on our site neighbours. Traffic management will also be in place to support this work.

Notice of Installation of Open Cut Drainage in Wormwood Scrubs

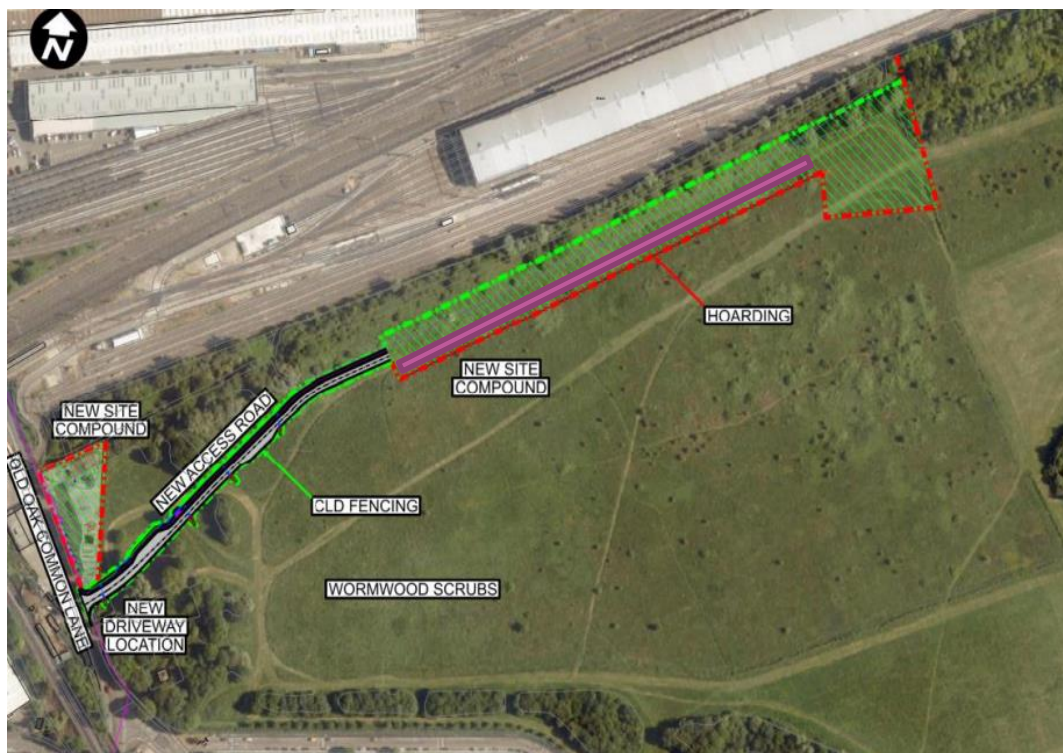
www.hs2.org.uk

Notification



The works will be carried out within the secure compound built in Wormwood Scrubs and no additional vegetation clearance will take place as part of this work. The location of works is shown on the image below.

You might notice an increase in noise levels from machinery and hand tools during this work. We will use best practicable means to minimise any impact on our site neighbours. The works will be completed within the site hoarding which will act as a barrier to reduce the noise. The works will be carried out between 8am – 6pm Monday to Friday and 8am – 1pm on Saturdays.



The above image shows the site working area. The purple line indicates where this work will be taking place.

Contact our HS2 Helpdesk team on **08081 434 434**

What else is happening in your area?

www.hs2.org.uk

Contact our HS2 Helpdesk team

Our team is here to listen and respond to your enquiry, complaint or feedback to help us be a good neighbour.

You can contact our Helpdesk team all day, every day of the year on:

Freephone: **08081 434 434**

Minicom: **08081 456 472**

Email: hs2enquiries@hs2.org.uk

Keep up-to-date with your local community website

To find out more about what's happening in your area and receive regular email updates, you can sign up to our local community websites at: www.hs2inyourarea.co.uk.

About our Community and Business Funds

We are offering two funds that are available to local communities and businesses between the West Midlands and London, to help with the disruption caused by our construction work. These are the Community and Environment Fund (CEF) and the Business and Local Economy Fund (BLEF).

The CEF is designed to give communities the opportunity to share in the benefits of HS2. It is an allocated fund that communities are able to apply for, to help to support local projects that aim to improve their local area.

The BLEF is designed to support local economies that may be disrupted by the construction of HS2. BLEF grants are for local business support organisations and local authorities to help maintain business activity in local communities.

For more information about each of these funds, including how to apply, please visit: <https://www.groundwork.org.uk/hs2funds>



Keeping you informed

We are committed to keeping you informed about work on HS2. This includes ensuring you know what to expect and when to expect it, as well as how we can help.

Residents' Charter and Commissioner

The Residents' Charter is our promise to communicate as clearly as we possibly can with people who live along or near the HS2 route.
www.gov.uk/government/publications/hs2-residents-charter

We also have an independent Residents' Commissioner whose job is to make sure we keep to the promises we make in the Charter and to keep it under constant review. Find reports at:
www.gov.uk/government/collections/hs2-ltd-residents-commissioner

You can contact the Commissioner at:
residentscommissioner@hs2.org.uk

Construction Commissioner

The Construction Commissioner's role is to mediate and monitor the way in which HS2 Ltd manages and responds to construction complaints. You can contact the Construction Commissioner by emailing:
complaints@hs2-cc.org.uk

Property and compensation

You can find out all about HS2 and properties along the line of route by visiting:
www.gov.uk/government/collections/hs2-property
Find out if you're eligible for compensation at:
www.gov.uk/claim-compensation-if-affected-by-hs2


Holding us to account

If you are unhappy for any reason you can make a complaint by contacting our HS2 Helpdesk team. For more details on our complaints process, please visit our website:
www.hs2.org.uk/how-to-complain

Contact Us

Contact our HS2 Helpdesk team all day, every day of the year on:

 Freephone **08081 434 434**

 Minicom **08081 456 472**

 Email hs2enquiries@hs2.org.uk

Write to:

FREEPOST

HS2 Community Engagement

Website www.hs2.org.uk

To keep up to date with what is happening in your local area, visit:
www.hs2inyourarea.co.uk

Please contact us if you'd like a free copy of this document in large print, Braille, audio or easy read. You can also contact us for help and information in a different language.

HS2 Ltd is committed to protecting personal information. If you wish to know more about how we use your personal information please see our Privacy Notice
<https://www.gov.uk/government/publications/high-speed-two-ltd-privacy-notice>

Reference number: HS2-MW-BBV-Ph1-Ar-No-N2-Prog-works-30-20/01/2021

High Speed Two (HS2) Limited, registered in England and Wales.
Registered office: Two Snowhill, Snow Hill Queensway, Birmingham B4 6GA.
Company registration number: 06791686. VAT registration number: 888 8512 56.