

Notice of Road Closure: Old Oak Common Lane

January 2022 | www.hs2.org.uk

High Speed Two (HS2) is the new high speed railway for Britain.

We are following Government and Public Health England (PHE) advice on working safely during the pandemic. As we increase face to face engagement, in addition to virtual engagement, we will ensure all events and meetings adhere to the guidelines. The health and safety of our workforce and the communities we work within is our priority. If you have any questions about this, please contact our Helpdesk to find out more.

Old Oak Common Lane temporary night-time closure: 4-5 January 2022

We are temporarily closing Old Oak Common Lane between Wells House Road and Wulfstan Street to all traffic, from 9pm on Tuesday 4 January to 6am on Wednesday 5 January 2022. During this time, we will be installing barriers and an additional set on traffic lights on Old Oak Common Lane, to extend the existing northbound lane closure in place for works on the Wells House Road boundary wall. A map is included on page two to show the traffic management that will be in place on Old Oak Common Lane from 5 January.

There will be a diversion in place via Victoria Road (map on page three). Bus stops on Old Oak Common Lane will be closed and buses will be on diversion during the works. Vehicle access to Wells House Road will be maintained throughout the closure. Access will be maintained for pedestrians, and cyclists will be asked to dismount and walk their bikes through the closure.

Although this activity is not anticipated to be noisy, there will be vehicle movements and people working on Old Oak Common Lane during the closure.

If you have a question about HS2 or our works, please contact our HS2 Helpdesk team on 08081 434 434 or email hs2enquiries@hs2.org.uk

Notification



Duration of works

Old Oak Common Lane temporary night-time closure from 9pm on 4 January to 6am on 5 January 2022.

What to expect

Old Oak Common Lane will be closed to all traffic between Wells House Road and Wulfstan Street. Vehicle access to Wells House Road will be maintained, and access will be maintained for pedestrians.

What we will do

We will be providing transport for Wells House Road residents who are older people, disabled people, those who have small children, or people with access needs. Details of this service will be sent separately to Wells House Road residents.

Notice of Road Closure: Old Oak Common Lane

Notification



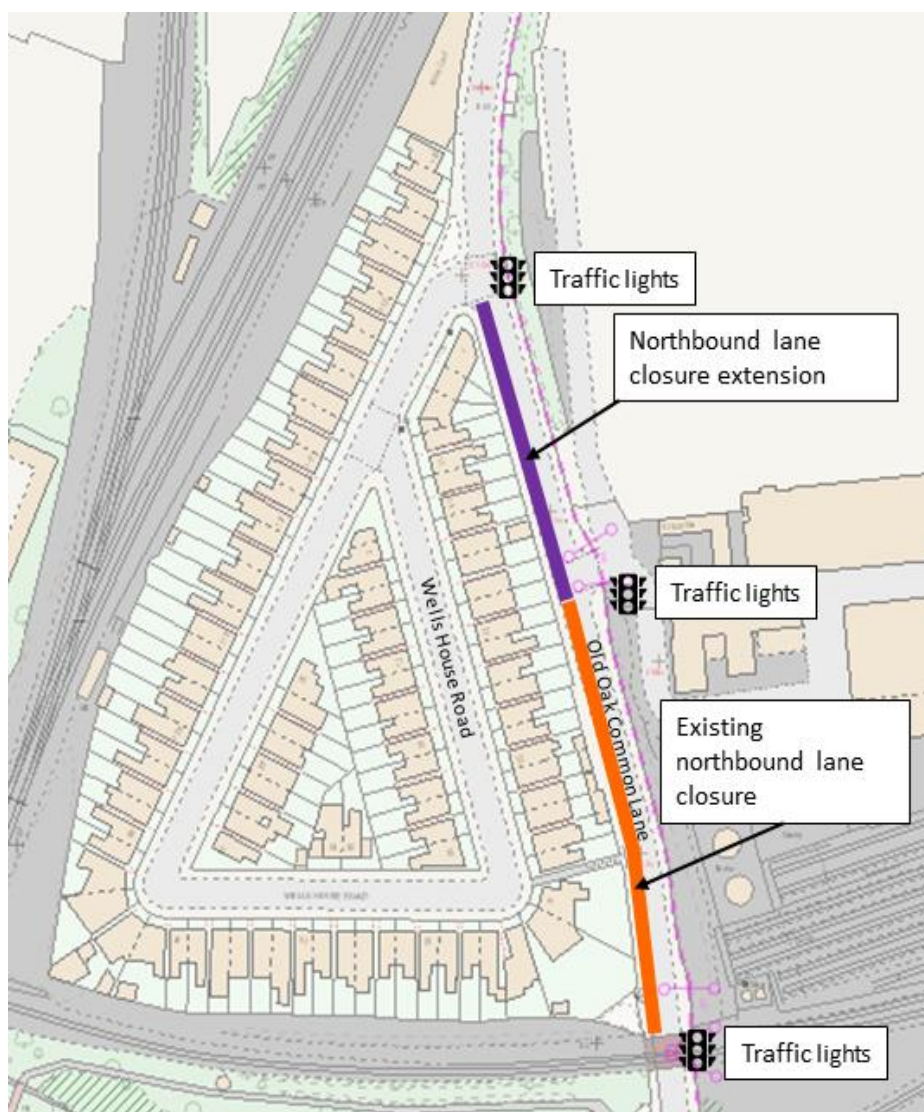
www.hs2.org.uk

Alternative transportation for Wells House Road residents

As a result of the closure and associated bus diversions, we will be providing transport for Wells House Road residents who are older people, disabled people, those who have small children, or people with access needs. Details of this service will be sent separately to Wells House Road residents.

Changes to traffic management on Old Oak Common Lane

To safely carry out the stabilisation works on the Wells House Road boundary wall, we need to reinstate the three-way traffic lights on Old Oak Common Lane, and extend the lane closure further North on the northbound carriageway. These changes will be implemented during the road closure on 4 January 2022, and remain in place until the completion of the works in April 2022. Further details are provided on the map below:



Contact our HS2 Helpdesk team on **08081 434 434**

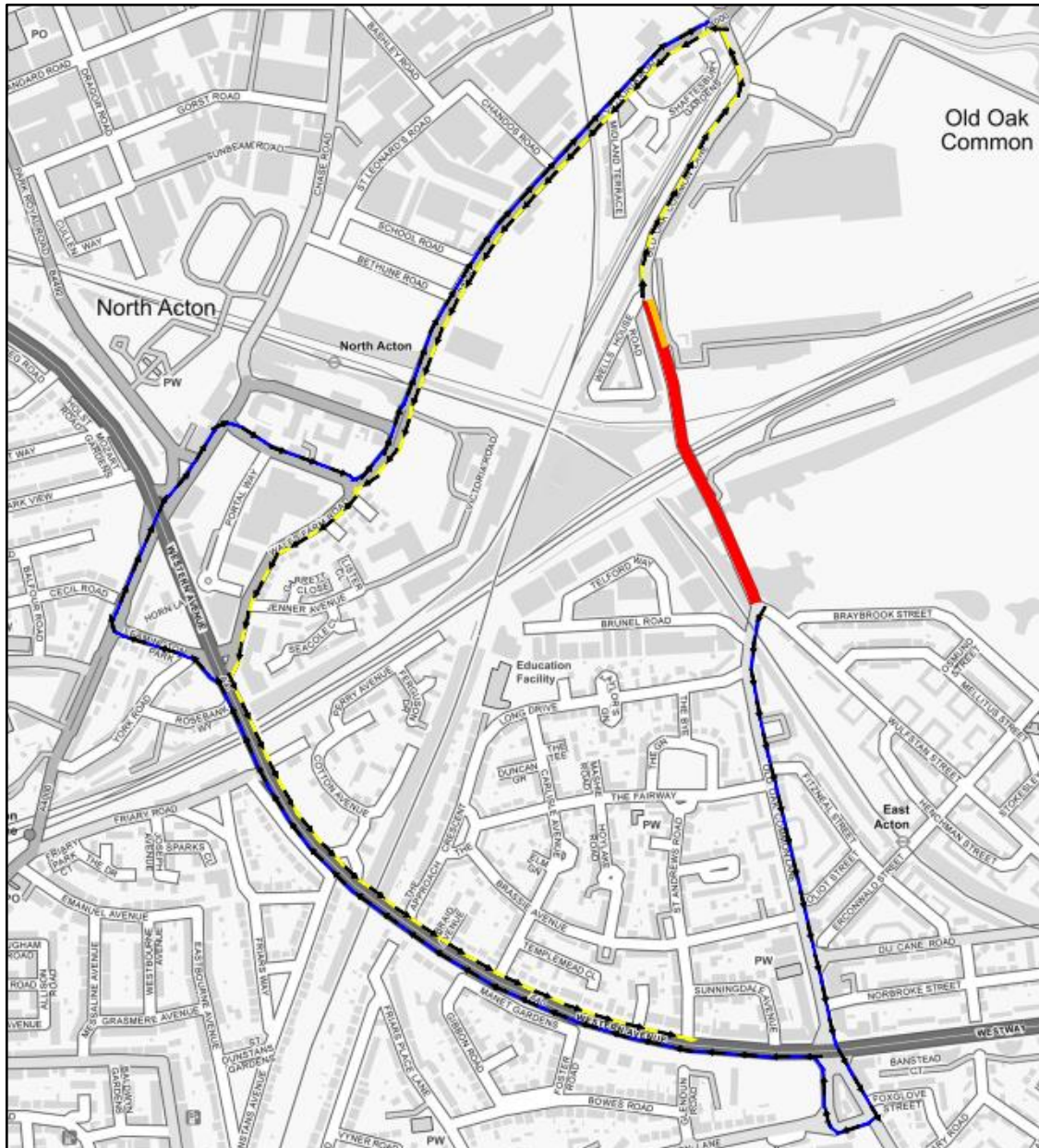
Notice of Road Closure: Old Oak Common Lane

Notification



www.hs2.org.uk

Road closure and diversion routes



- Road closed
- Access only
- Northbound diversion route
- Southbound diversion route

Contact our HS2 Helpdesk team on **08081 434 434**

Keeping you informed

We are committed to keeping you informed about work on HS2. This includes ensuring you know what to expect and when to expect it, as well as how we can help.

Residents' Charter and Commissioner

The Residents' Charter is our promise to communicate as clearly as we possibly can with people who live along or near the HS2 route.
www.gov.uk/government/publications/hs2-residents-charter

We also have an independent Residents' Commissioner whose job is to make sure we keep to the promises we make in the Charter and to keep it under constant review. Find reports at:
www.gov.uk/government/collections/hs2-ltd-residents-commissioner

You can contact the Commissioner at:
residentscommissioner@hs2.org.uk

Construction Commissioner

The Construction Commissioner's role is to mediate and monitor the way in which HS2 Ltd manages and responds to construction complaints. You can contact the Construction Commissioner by emailing:
complaints@hs2-cc.org.uk

Property and compensation

You can find out all about HS2 and properties along the line of route by visiting:
www.gov.uk/government/collections/hs2-property
Find out if you're eligible for compensation at:
www.gov.uk/claim-compensation-if-affected-by-hs2

Holding us to account

If you are unhappy for any reason you can make a complaint by contacting our HS2 Helpdesk team. For more details on our complaints process, please visit our website:
www.hs2.org.uk/how-to-complain

Contact Us

Contact our HS2 Helpdesk team all day, every day of the year on:

 Freephone **08081 434 434**

 Minicom **08081 456 472**

 Email **hs2enquiries@hs2.org.uk**

Write to:

FREEPOST

HS2 Community Engagement

Website **www.hs2.org.uk**

To keep up to date with what is happening in your local area, visit:
www.hs2inyourarea.co.uk

Please contact us if you'd like a free copy of this document in large print, Braille, audio or easy read. You can also contact us for help and information in a different language.

HS2 Ltd is committed to protecting personal information. If you wish to know more about how we use your personal information please see our Privacy Notice
<https://www.gov.uk/government/publication>

Reference number: HS2-MW-BBVS-Ph1-OOC-St-S4-CR-39-12/09/2021

High Speed Two (HS2) Limited, registered in England and Wales.
Registered office: Two Snowhill, Snow Hill Queensway, Birmingham B4 6GA.
Company registration number: 06791686. VAT registration number: 888 8512 56.