



Enabling works near Cappers Lane

November 2021 | www.hs2.org.uk

High Speed Two (HS2) is the new high speed railway for Britain. Balfour Beatty VINCI is working in partnership with HS2 Ltd to build the new high-speed railway in your area.

Continuing our enabling works

We will be continuing with our preparation for permanent construction works on our site near Cappers Lane until March 2022.

This work involves piling work which is the process of installing foundations for future structures. To install the piles, we will be using a piling machine to drill a vertical hole deep into the ground. We will then lower the reinforced steel into the hole using a crane, before filling the hole with concrete and finally capping them with a beam.

Additional overnight works

Additional site surveys and maintenance of monitoring equipment is now necessary. This will require two overnight closures of the West Coast Main Line and will be completed with hand tools and survey equipment. These closures will take place overnight on the following dates: -

- Saturday 15 January 2022 from 10:30pm until 9:00am Sunday 16 January 2022.
- Saturday 12 February 2022 from 10:30 pm until 9:00am Sunday 13 February 2022.

Our workforce maybe on site one hour before and one hour after to set-up and secure our equipment.

If you have a question about HS2 or our works, please contact our HS2 Helpdesk team on 08081 434 434 or email hs2enquiries@hs2.org.uk

Duration of works

These works will continue until March 2022

Additional Works

There will be two overnight closures on the West Coast Main Line: -

Saturday 15 January 2022
from 10:30pm until 9:00am
Sunday 16 January 2022

and

Saturday 12 February 2022
from 10:30pm until 9:00am
Sunday 13 February

Our workforce maybe on site one hour before and one hour after to set-up and secure our equipment

What to expect

Low-level noise

Lighting on site

What we will do

Inform you in advance of any changes to the dates shown.

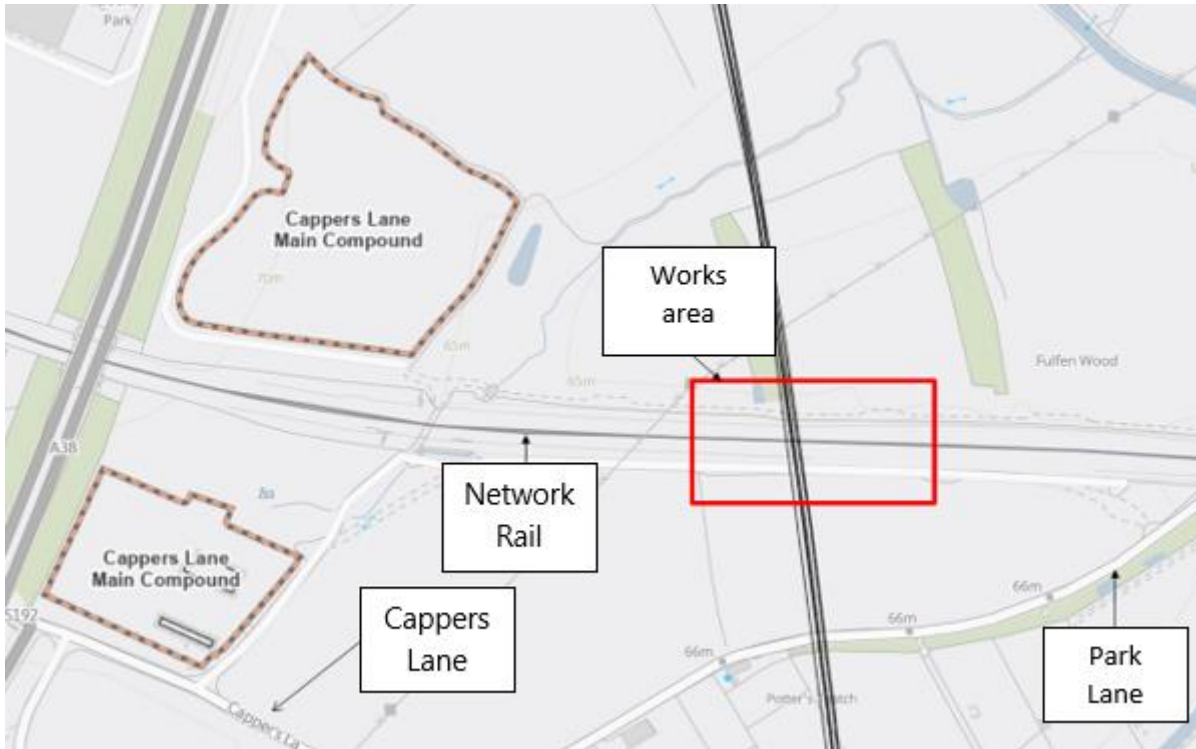
Keep all sites safe and secure.

Ask you to register with hs2instaffordshire.co.uk to receive updates.

Enabling works near Cappers Lane

www.hs2.org.uk

Notification



HS2 and the COVID-19 outbreak

We are continually reviewing the works on our construction sites in line with Government and Public Health England (PHE) advice on dealing with COVID-19. The Government's current COVID-19 strategy makes clear that construction activity can continue as long as it complies with this guidance. The health and safety of our workforce and the communities we affect is our key priority. Please be assured that those sites that are currently still working are doing so because they can operate within PHE and construction industry guidelines

Contact our HS2 Helpdesk team on **08081 434 434**

What else is happening in your area?

www.hs2.org.uk

Contact our HS2 Helpdesk team

Our team is here to listen and respond to your enquiry, complaint, or feedback to help us be a good neighbour.

You can contact our Helpdesk team all day, every day of the year on:

Freephone: **08081 434 434**

Minicom: **08081 456 472**

Email: hs2enquiries@hs2.org.uk

Keep up-to-date with your local community website

To find out more about what's happening in your area and receive regular email updates, you can sign up to our local community websites at: www.hs2inyourarea.co.uk.

About our Community and Business Funds

We are offering two funds that are available to local communities and businesses between the West Midlands and London, to help with the disruption caused by our construction work. These are the Community and Environment Fund (CEF) and the Business and Local Economy Fund (BLEF).

The CEF is designed to give communities the opportunity to share in the benefits of HS2. It is an allocated fund that communities are able to apply for, to help to support local projects that aim to improve their local area.

The BLEF is designed to support local economies that may be disrupted by the construction of HS2. BLEF grants are for local business support organisations and local authorities to help maintain business activity in local communities.

For more information about each of these funds, including how to apply, please visit: <https://www.groundwork.org.uk/hs2funds>



Keeping you informed

We are committed to keeping you informed about work on HS2. This includes ensuring you know what to expect and when to expect it, as well as how we can help.

Residents' Charter and Commissioner

The Residents' Charter is our promise to communicate as clearly as we possibly can with people who live along or near the HS2 route.

www.gov.uk/government/publications/hs2-residents-charter

We also have an independent Residents' Commissioner whose job is to make sure we keep to the promises we make in the Charter and to keep it under constant review. Find reports at:

www.gov.uk/government/collections/hs2-ltd-residents-commissioner

You can contact the Commissioner at:
residentscommissioner@hs2.org.uk

Construction Commissioner

The Construction Commissioner's role is to mediate and monitor the way in which HS2 Ltd manages and responds to construction complaints. You can contact the Construction Commissioner by emailing:
complaints@hs2-cc.org.uk

Property and compensation

You can find out all about HS2 and properties along the line of route by visiting:

www.gov.uk/government/collections/hs2-property

Find out if you're eligible for compensation at:

www.gov.uk/claim-compensation-if-affected-by-hs2

Holding us to account

If you are unhappy for any reason you can make a complaint by contacting our HS2 Helpdesk team. For more details on our complaints process, please visit our website:

www.hs2.org.uk/how-to-complain

Contact Us

Contact our HS2 Helpdesk team all day, every day of the year on:

 Freephone **08081 434 434**

 Minicom **08081 456 472**

 Email **hs2enquiries@hs2.org.uk**

Write to:

FREEPOST

HS2 Community Engagement

Website **www.hs2.org.uk**

To keep up to date with what is happening in your local area, visit:
www.hs2inyourarea.co.uk

Please contact us if you'd like a free copy of this document in large print, Braille, audio or easy read. You can also contact us for help and information in a different language.

HS2 Ltd is committed to protecting personal information. If you wish to know more about how we use your personal information please see our Privacy Notice
<https://www.gov.uk/government/publications/high-speed-two-ltd-privacy-notice>

Reference number: HS2-MW-BBV-Ph1-Ar-No-N2-Site-1-11/08/2021

High Speed Two (HS2) Limited, registered in England and Wales.

Registered office: Two Snowhill, Snow Hill Queensway, Birmingham B4 6GA.

Company registration number: 06791686. VAT registration number: 888 8512 56.