



Notice of Public Rights of Way Closures, Calvert and Quainton

November 2021 | www.hs2.org.uk

High Speed Two (HS2) is the new high speed railway for Britain. We continually reviewing the works on our construction sites in line with Government and Public Health England (PHE) advice on dealing with COVID-19. All sites will remain under constant review. You can sign up for regular updates in your local area at www.hs2inbucksandox.co.uk.

What are we doing?

As part of our works and for the safety of the public, we will be closing some Public Rights of Way (PRoW) in the area between Calvert and Quainton. This is to support the construction of our internal haul road, structures and the construction of the new HS2 rail line.

Bridleway and Footpath works

HS2 works will sometimes result in temporary changes to public rights of way (including footpaths and bridleways) and cycleways. Where HS2 contractors are impacting an official public right of way, we work with the relevant local authority to obtain consent or permission for any closures or diversions.

The map on the overleaf show the section of footpaths which is affected.

Which Public Rights of Way are you affecting?

The map on the overleaf shows the area in which PRoW's are affected by the HS2 works.

Map 1 – Area South of Calvert Green

1. The PRoW that are to the south of Calvert Green that run alongside the railway line have been closed for carrying out the early HS2 works and will remain closed. These are indicated on the map as SLC18/1, SLC18/2, CAG3/1, CAG3/2, CAG2/1 & GUN25.
2. We are demolishing/removing the bridge at location GUN28/1 and therefore this PRoW will need to be closed along with footpath crossing GUN31/1.
3. The bridge QUA36/2 is already closed due to its weak and dangerous condition.

Possible temporary routes are being explored to allow a safe crossing passage.

If you have a question about HS2 or our works, please contact our HS2 Helpdesk team on 08081 434 434 or email hs2enquiries@hs2.org.uk

Duration of works

Works on PRoWs are expected to continue through 2025

Normal working hours:

Monday to Friday

8.00am – 6.00pm

Saturdays

8.00am – 1.00pm

Our contractors may be on site for one hour's start-up and shutdown either side of these times.

What to expect

Varied activities with both quiet and busier periods.

Noise from plant and equipment used for the works.

Footpath closures and diversions.

What we will do

Manage any environmental impacts, such as traffic and noise.

Respond promptly to any complaints and take appropriate action.

Take care to respect the community.

Notice of Public Rights of Way Closures, Calvert and Quainton

Notification

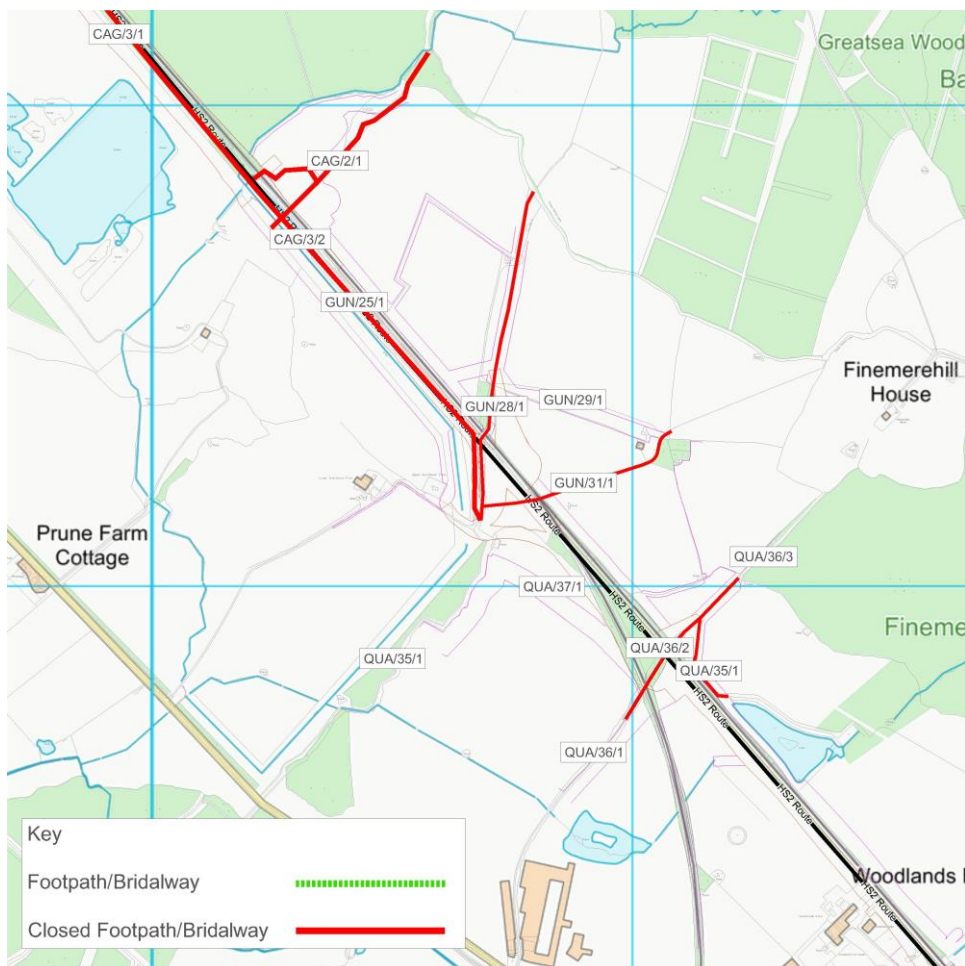


www.hs2.org.uk

Where will the new permanent diversion be located?

The map below, shows the path closures occurring in early December.

Area South of Calvert Green



Contact our HS2 Helpdesk team on **08081 434 434**

What else is happening in your area?

www.hs2.org.uk

Contact our HS2 Helpdesk team

Our team is here to listen and respond to your enquiry, complaint or feedback to help us be a good neighbour.

You can contact our Helpdesk team all day, every day of the year on:

Freephone: **08081 434 434**

Minicom: **08081 456 472**

Email: hs2enquiries@hs2.org.uk

Keep up-to-date with your local community website

To find out more about what's happening in your area and receive regular email updates, you can sign up to our local community websites at: www.hs2inyourarea.co.uk.

About our Community and Business Funds

We are offering two funds that are available to local communities and businesses between the West Midlands and London, to help with the disruption caused by our construction work. These are the Community and Environment Fund (CEF) and the Business and Local Economy Fund (BLEF).

The CEF is designed to give communities the opportunity to share in the benefits of HS2. It is an allocated fund that communities are able to apply for, to help to support local projects that aim to improve their local area.

The BLEF is designed to support local economies that may be disrupted by the construction of HS2. BLEF grants are for local business support organisations and local authorities to help maintain business activity in local communities.

For more information about each of these funds, including how to apply, please visit: <https://www.groundwork.org.uk/hs2funds>



Keeping you informed

We are committed to keeping you informed about work on HS2. This includes ensuring you know what to expect and when to expect it, as well as how we can help.

Residents' Charter and Commissioner

The Residents' Charter is our promise to communicate as clearly as we possibly can with people who live along or near the HS2 route.
www.gov.uk/government/publications/hs2-residents-charter

We also have an independent Residents' Commissioner whose job is to make sure we keep to the promises we make in the Charter and to keep it under constant review. Find reports at:
www.gov.uk/government/collections/hs2-ltd-residents-commissioner

You can contact the Commissioner at:
residentscommissioner@hs2.org.uk

Construction Commissioner

The Construction Commissioner's role is to mediate and monitor the way in which HS2 Ltd manages and responds to construction complaints. You can contact the Construction Commissioner by emailing:
complaints@hs2-cc.org.uk

Property and compensation

You can find out all about HS2 and properties along the line of route by visiting:
www.gov.uk/government/collections/hs2-property
Find out if you're eligible for compensation at:
www.gov.uk/claim-compensation-if-affected-by-hs2

Holding us to account

If you are unhappy for any reason you can make a complaint by contacting our HS2 Helpdesk team. For more details on our complaints process, please visit our website:
www.hs2.org.uk/how-to-complain

Contact Us

Contact our HS2 Helpdesk team all day, every day of the year on:

 Freephone **08081 434 434**

 Minicom **08081 456 472**

 Email **hs2enquiries@hs2.org.uk**

Write to:

FREEPOST

HS2 Community Engagement

Website **www.hs2.org.uk**

To keep up to date with what is happening in your local area, visit:
www.hs2inyourarea.co.uk

Please contact us if you'd like a free copy of this document in large print, Braille, audio or easy read. You can also contact us for help and information in a different language.

HS2 Ltd is committed to protecting personal information. If you wish to know more about how we use your personal information please see our Privacy Notice
<https://www.gov.uk/government/publications/high-speed-two-ltd-privacy-notice>

Reference number: HS2-MW-EK-Ph1-Ar-Ce-C2-Traf-10-11/09/2021
1MC12-EKF-IN-NTE-CS08-000013

High Speed Two (HS2) Limited, registered in England and Wales.
Registered office: Two Snowhill, Snow Hill Queensway, Birmingham B4 6GA.
Company registration number: 06791686. VAT registration number: 888 8512 56.