



Notice of GPR Surveys –A47, Mainstream Way and Arley Road

November 2021 | www.hs2.org.uk

High Speed Two (HS2) is the new high speed railway for Britain. Balfour Beatty Vinci is working in partnership with HS2 Ltd to build the new railway in your area.

Upcoming Ground Penetrating Radar Surveys

We will be carrying out Ground Penetrating Radar (GPR) surveys in locations along Adderley Road and Adderley Gardens from Monday 13 December until Thursday 16 December. Dates are subject to the progress of the surveys programme.

GPR surveys are non-intrusive, they are completed using a machine which transmits an electromagnetic pulse into the ground. These pulses reflect off features in the ground, allowing us to identify the location and depth of buried utility services.

Road and lane closures

To be able to carry out these inspections safely and effectively, we will need to put in place the following traffic management:

- **13 December** a road closure on a section of Mainstream Way
- **14 December – 15 December** lane closures on a section of A47 Heartlands Parkway
- **16 December** a lane closure with temporary lights on a section of Arley Road.

These will be in place from 9.00pm to 5.00am. Access to properties and businesses will be maintained at all times.

If you have a question about HS2 or our works, please contact our HS2 Helpdesk team on 08081 434 434 or email hs2enquiries@hs2.org.uk

Duration of works

13 - 16 December
(four nights)

13 December

Road closure on
Mainstream Way

14 – 15 December a lane
closures along a section of
A47 Heartlands Parkway.

16 December

Lane closure with
temporary lights along a
section of Arley Road.
9.00pm -5.00am.

Our workforce can be on
site up to 1 hour before and
1 hour after, to set up and
take down equipment.

What to expect

Road Closure along
Mainstream Way Lane, lane
closures on A47 Heartlands
Parkway and a lane closure
with temporary traffic lights
along a section of Arley
Road

Clear signage in place.

What we will do

Ensure all work areas are
safe and secure.

Keep you up-to-date via
www.hs2inbirmingham.co.uk

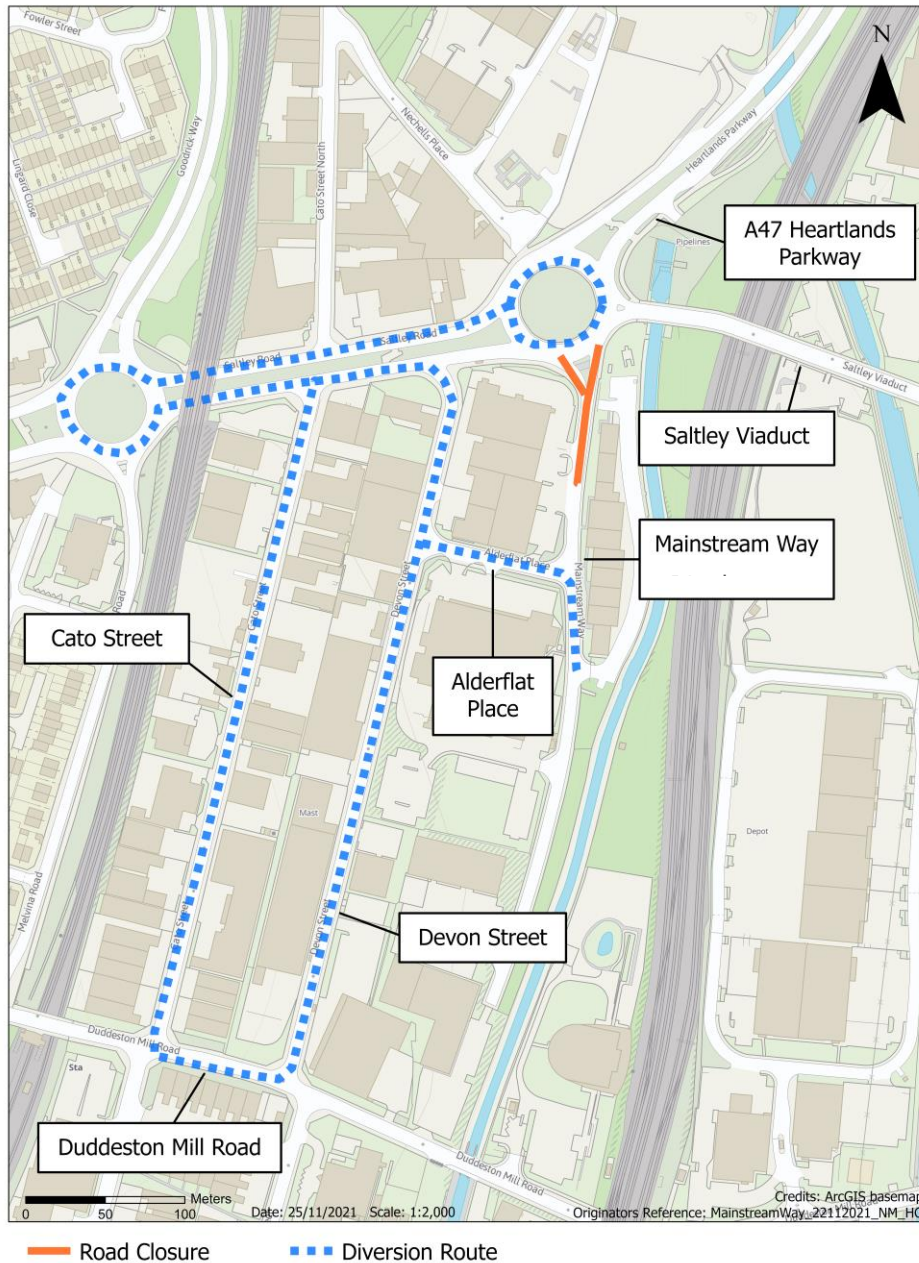
Notice of GPR Surveys –A47, Mainstream Way and Arley Road

Notification



www.hs2.org.uk

Map showing road closure and diversion route Mainstream Way– 13 December



Contact our HS2 Helpdesk team on **08081 434 434**

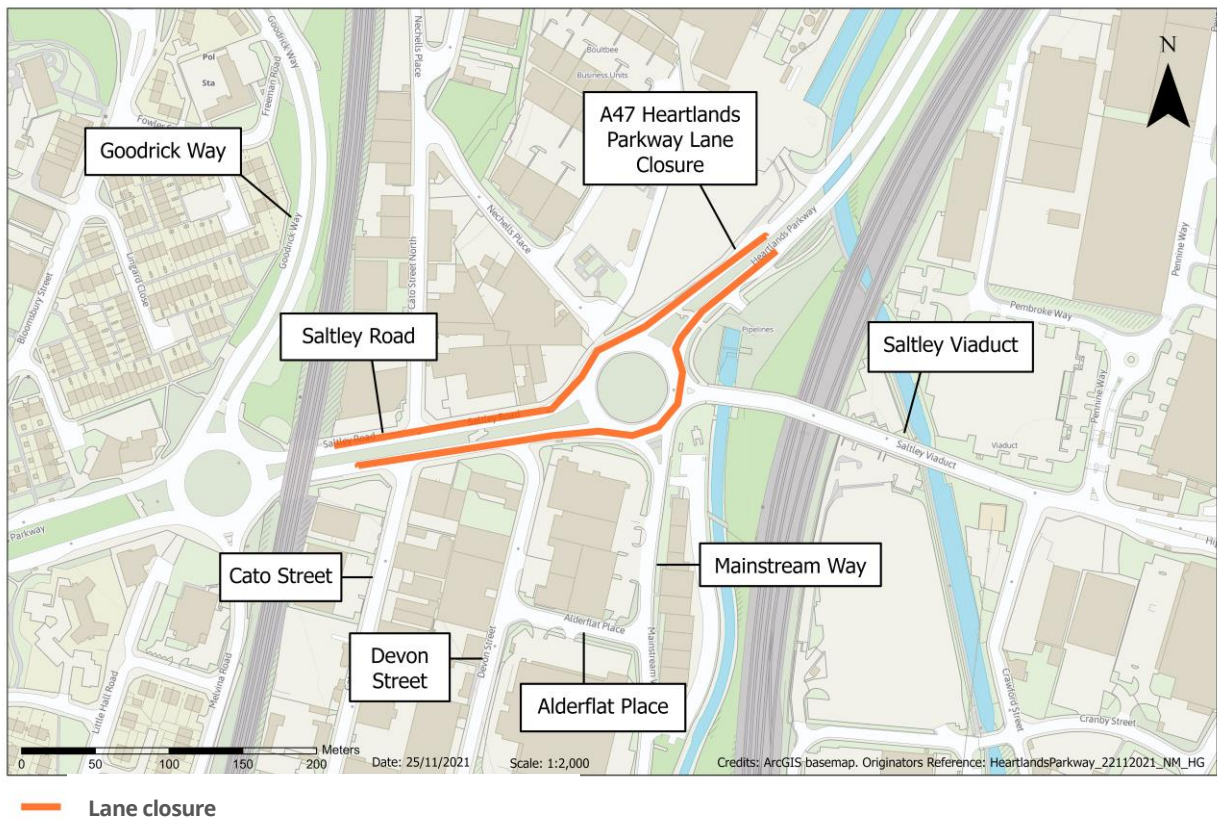
Notice of GPR Surveys –A47, Mainstream Way and Arley Road

Notification



www.hs2.org.uk

Map showing lane closures on A47 Heartlands Parkway – 14 -15 December



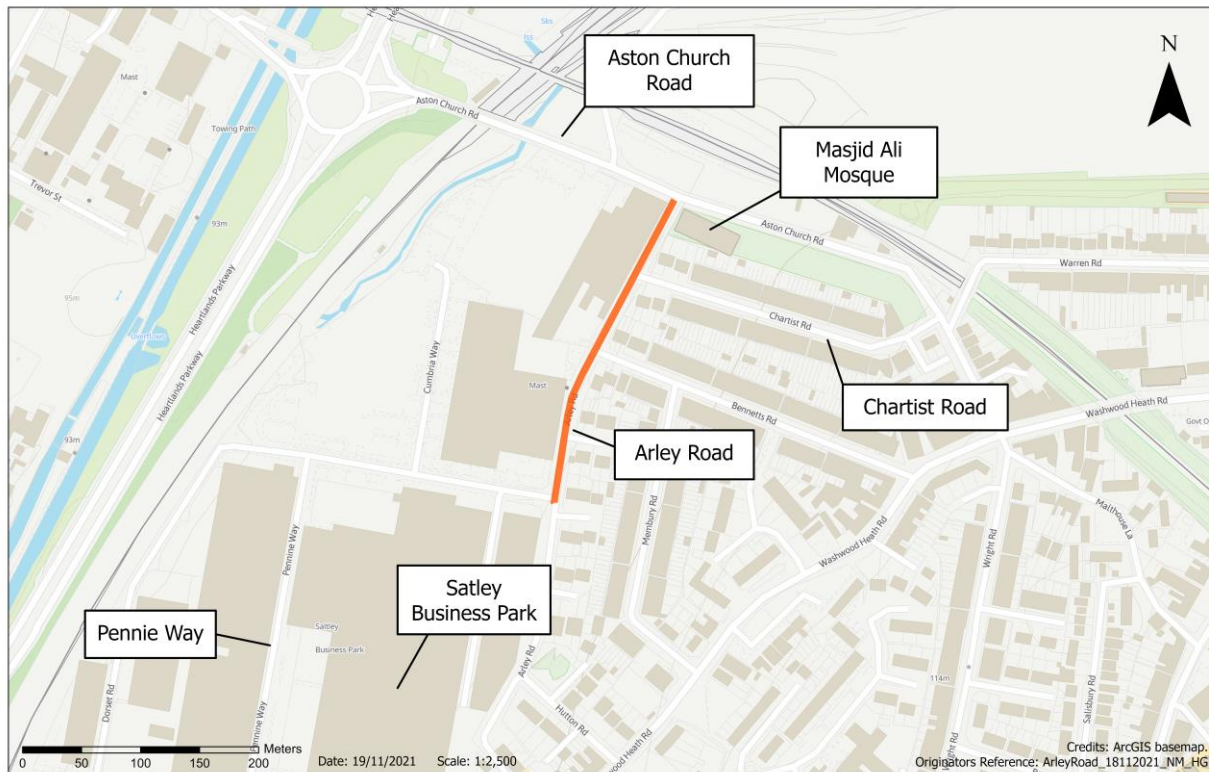
Contact our HS2 Helpdesk team on **08081 434 434**

Notice of GPR Surveys –A47, Mainstream Way and Arley Road

www.hs2.org.uk

Map showing lane closure on Arley Road – 16 December

Notification



— Temporary Road Closure

Contact our HS2 Helpdesk team on **08081 434 434**

What else is happening in your area?

www.hs2.org.uk

Contact our HS2 Helpdesk team

Our team is here to listen and respond to your enquiry, complaint or feedback to help us be a good neighbour.

You can contact our Helpdesk team all day, every day of the year on:

Freephone: **08081 434 434**

Minicom: **08081 456 472**

Email: hs2enquiries@hs2.org.uk

Keep up-to-date with your local community website

To find out more about what's happening in your area and receive regular email updates, you can sign up to our local community websites at: www.hs2inyourarea.co.uk.

About our Community and Business Funds

We are offering two funds that are available to local communities and businesses between the West Midlands and London, to help with the disruption caused by our construction work. These are the Community and Environment Fund (CEF) and the Business and Local Economy Fund (BLEF).

The CEF is designed to give communities the opportunity to share in the benefits of HS2. It is an allocated fund that communities are able to apply for, to help to support local projects that aim to improve their local area.

The BLEF is designed to support local economies that may be disrupted by the construction of HS2. BLEF grants are for local business support organisations and local authorities to help maintain business activity in local communities.

For more information about each of these funds, including how to apply, please visit: <https://www.groundwork.org.uk/hs2funds>



Keeping you informed

We are committed to keeping you informed about work on HS2. This includes ensuring you know what to expect and when to expect it, as well as how we can help.

Residents' Charter and Commissioner

The Residents' Charter is our promise to communicate as clearly as we possibly can with people who live along or near the HS2 route.
www.gov.uk/government/publications/hs2-residents-charter

We also have an independent Residents' Commissioner whose job is to make sure we keep to the promises we make in the Charter and to keep it under constant review. Find reports at:
www.gov.uk/government/collections/hs2-ltd-residents-commissioner

You can contact the Commissioner at:
residentscommissioner@hs2.org.uk

Construction Commissioner

The Construction Commissioner's role is to mediate and monitor the way in which HS2 Ltd manages and responds to construction complaints. You can contact the Construction Commissioner by emailing:
complaints@hs2-cc.org.uk

Property and compensation

You can find out all about HS2 and properties along the line of route by visiting:
www.gov.uk/government/collections/hs2-property
Find out if you're eligible for compensation at:
www.gov.uk/claim-compensation-if-affected-by-hs2


Holding us to account

If you are unhappy for any reason you can make a complaint by contacting our HS2 Helpdesk team. For more details on our complaints process, please visit our website:
www.hs2.org.uk/how-to-complain

Contact Us

Contact our HS2 Helpdesk team all day, every day of the year on:

 Freephone **08081 434 434**

 Minicom **08081 456 472**

 Email **hs2enquiries@hs2.org.uk**

Write to:

FREEPOST

HS2 Community Engagement

Website **www.hs2.org.uk**

To keep up to date with what is happening in your local area, visit:
www.hs2inyourarea.co.uk

Please contact us if you'd like a free copy of this document in large print, Braille, audio or easy read. You can also contact us for help and information in a different language.

HS2 Ltd is committed to protecting personal information. If you wish to know more about how we use your personal information please see our Privacy Notice
<https://www.gov.uk/government/publications/high-speed-two-ltd-privacy-notice>

Reference number: HS2-MW-BBV-Ph1-Ar-No-N1-Prog-works-45-13/12/2021

High Speed Two (HS2) Limited, registered in England and Wales.

Registered office: Two Snowhill, Snow Hill Queensway, Birmingham B4 6GA.

Company registration number: 06791686. VAT registration number: 181 4312 30.