

# Notice of hedgerow translocation, Newton Purcell

November 2021 | [www.hs2.org.uk](http://www.hs2.org.uk)

High Speed Two (HS2) is the new high speed railway for Britain. We are continually reviewing the works on our construction sites in line with Government and Public Health England (PHE) advice on dealing with COVID-19. Further to the Covid-19 restrictions being relaxed we are now beginning to plan for future face-to-face engagement events and meetings. Whilst we continue to move forward, we will continue to communicate with communities via letters, online meetings and phone calls. You can sign up for regular updates in your local area at [www.hs2.org.uk/in-your-area](http://www.hs2.org.uk/in-your-area)

## What are we doing?

Ahead of the main construction works we need to prepare the line of route. Part of this work requires hedgerow translocation near Newton Purcell. The translocation of the hedge and soils will be undertaken by a specialist team using machinery and handheld tools into the east of the site. (Please see map included)

The works will take place between the 6 December until the 21 December 2021.

## How will this affect you?

Access to the site will be gained along the A4421 at the existing entrance point next to the Shelswell Inn.

You may notice extra traffic on the roads due to the workforce and equipment movements in the area. HS2 construction traffic, HGV's and all vehicles of 7.5 tonnes or greater making deliveries to the site will use the A4421.

**If you have a question about HS2 or our works, please contact our HS2 Helpdesk team on 08081 434 434 or email [hs2enquiries@hs2.org.uk](mailto:hs2enquiries@hs2.org.uk)**

## Notification



### Duration of works

Works will take place between 6 December until the 21 December 2021

(Monday to Saturday)

Normal working hours:  
Monday to Friday 8am – 6pm

Saturday 8am – 1pm

Our contractors may also be on site for one hour's quiet start up and shut down outside of these times.

### What to expect

Some additional traffic on local roads.

Noise from the equipment used for the works.

### What we will do

Manage impacts, such as traffic and noise with the aim of reducing or removing them.

# Notice of hedgerow translocation, Newton Purcell

[www.hs2.org.uk](http://www.hs2.org.uk)

Notification



## Continued- How will this affect you?

We will be closely monitoring the roads around the site and regular road sweeping will take place. We will take measures to ensure we keep mud off the local roads, such as cleaning dirty vehicles before they leave work areas.

There will be a mobile welfare unit, situated on the existing hard standing area located within the field.

## What consents do we have to undertake this work?

There have been extensive ecological surveys undertaken across the hedgerow / vegetation identified for translocation.

Before any hedgerow is translocated it will be thoroughly inspected by qualified ecologists. Any protected species found to be present will be recorded, the appropriate buffer established and no vegetation in that area will be cleared until the species have left the site. Any vegetation that cannot be removed due to the presence of protected ecology will be left until further surveys confirm that the ecology is no longer present.

Further details are available online.

- <https://www.gov.uk/government/publications/hs2-phase-one-environmental-statement-volume-5-ecology>

The work on HS2 is guided by High-Speed Rail (LondonWestMidlands) Act 2017.

## Public Rights of Way

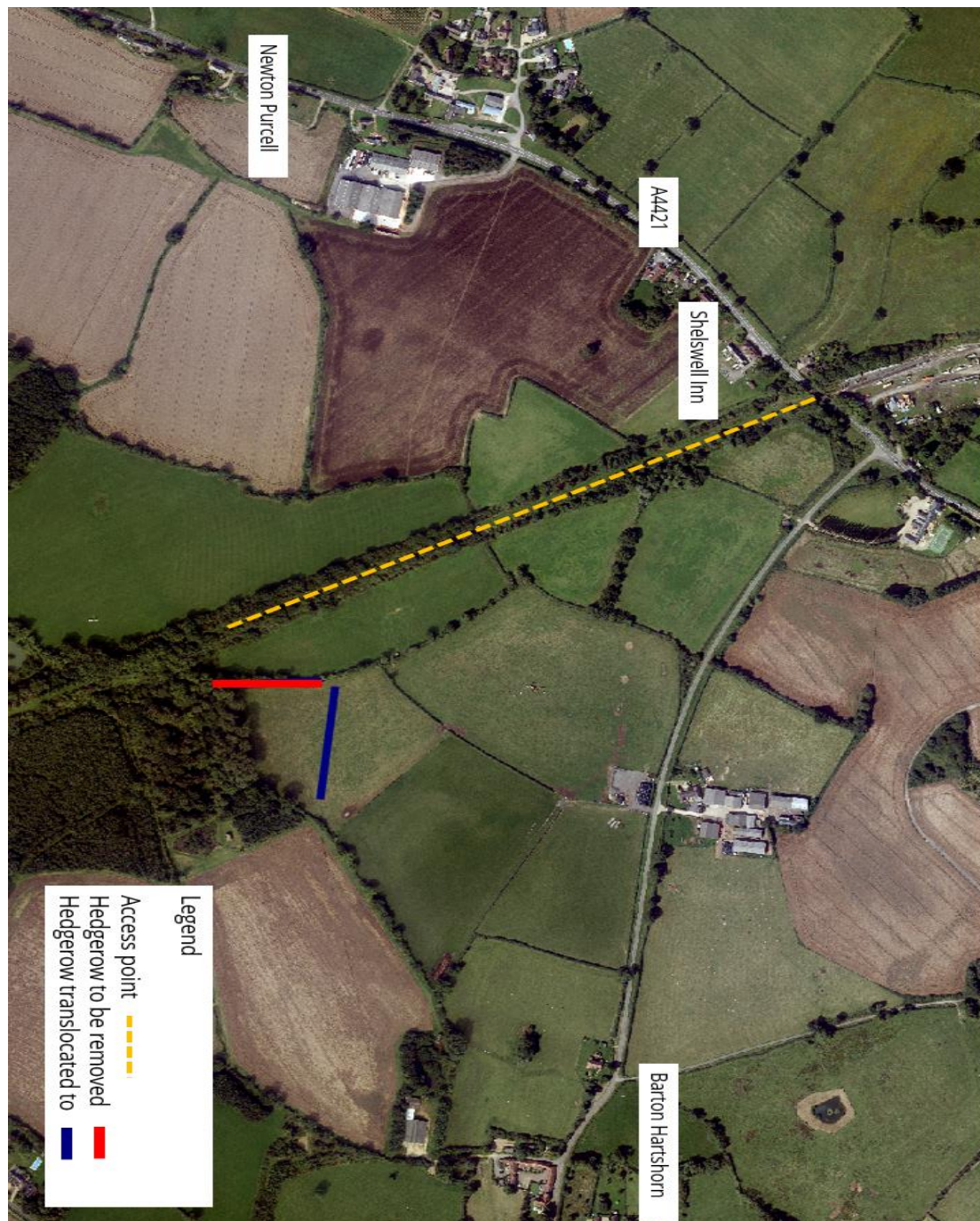
The Public Right of Way in this area will not be affected by any of these works and shall remain open as usual.

# Notice of hedgerow translocation, Newton Purcell

[www.hs2.org.uk](http://www.hs2.org.uk)

Location of works

Notification



Contact our HS2 Helpdesk team on **08081 434 434**

# Keeping you informed

We are committed to keeping you informed about work on HS2. This includes ensuring you know what to expect and when to expect it, as well as how we can help.

## Residents' Charter and Commissioner

The Residents' Charter is our promise to communicate as clearly as we possibly can with people who live along or near the HS2 route.  
[www.gov.uk/government/publications/hs2-residents-charter](http://www.gov.uk/government/publications/hs2-residents-charter)

We also have an independent Residents' Commissioner whose job is to make sure we keep to the promises we make in the Charter and to keep it under constant review. Find reports at:  
[www.gov.uk/government/collections/hs2-ltd-residents-commissioner](http://www.gov.uk/government/collections/hs2-ltd-residents-commissioner)

You can contact the Commissioner at:  
[residentscommissioner@hs2.org.uk](mailto:residentscommissioner@hs2.org.uk)

## Construction Commissioner

The Construction Commissioner's role is to mediate and monitor the way in which HS2 Ltd manages and responds to construction complaints. You can contact the Construction Commissioner by emailing:  
[complaints@hs2-cc.org.uk](mailto:complaints@hs2-cc.org.uk)

## Property and compensation

You can find out all about HS2 and properties along the line of route by visiting:  
[www.gov.uk/government/collections/hs2-property](http://www.gov.uk/government/collections/hs2-property)  
Find out if you're eligible for compensation at:  
[www.gov.uk/claim-compensation-if-affected-by-hs2](http://www.gov.uk/claim-compensation-if-affected-by-hs2)


## Holding us to account

If you are unhappy for any reason you can make a complaint by contacting our HS2 Helpdesk team. For more details on our complaints process, please visit our website:  
[www.hs2.org.uk/how-to-complain](http://www.hs2.org.uk/how-to-complain)

## Contact Us

Contact our HS2 Helpdesk team all day, every day of the year on:

 Freephone **08081 434 434**

 Minicom **08081 456 472**

 Email **[hs2enquiries@hs2.org.uk](mailto:hs2enquiries@hs2.org.uk)**

Write to:

**FREEPOST**

**HS2 Community Engagement**

Website **[www.hs2.org.uk](http://www.hs2.org.uk)**

To keep up to date with what is happening in your local area, visit:  
**[www.hs2inyourarea.co.uk](http://www.hs2inyourarea.co.uk)**

**Please contact us if you'd like a free copy of this document in large print, Braille, audio or easy read. You can also contact us for help and information in a different language.**

HS2 Ltd is committed to protecting personal information. If you wish to know more about how we use your personal information please see our Privacy Notice  
<https://www.gov.uk/government/publications/high-speed-two-ltd-privacy-notice>

**Reference number: FUS\_AWN\_0286HS2-EW-Fusion -Ph1-Ar-Ce-C23-Eco-42-16/11/2021**

High Speed Two (HS2) Limited, registered in England and Wales.  
Registered office: Two Snowhill, Snow Hill Queensway, Birmingham B4 6GA.  
Company registration number: 06791686. VAT registration number: 888 8512 56.