

A decorative graphic on the left side of the slide, consisting of a series of vertical blue bars connected by horizontal lines, resembling a fence or a stylized representation of a railway track.

Old Oak Common Network Rail HS2 Enabling Works

A decorative graphic on the right side of the slide, identical to the one on the left, consisting of a series of vertical blue bars connected by horizontal lines, resembling a fence or a stylized representation of a railway track.

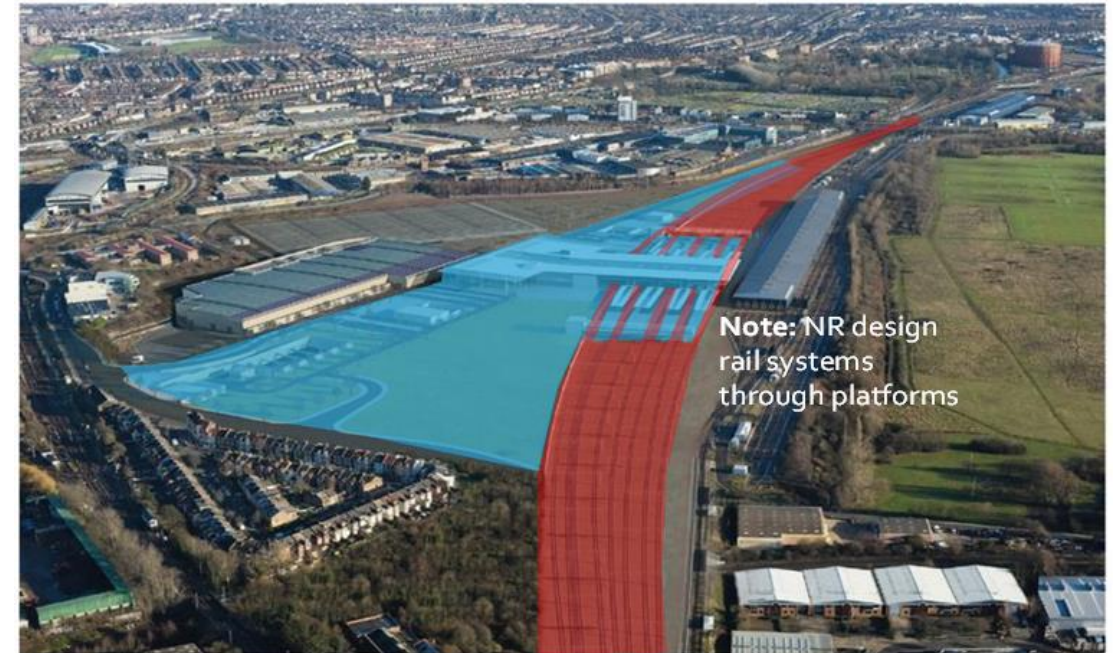
Community Notification Session

September 2021

Introductions

- Hazel Maguire – Senior Communications Manager
- Emily Hanlon – Community Relations Executive
- Andrew Fleming – SRSA Project Lead (Construction)

Background

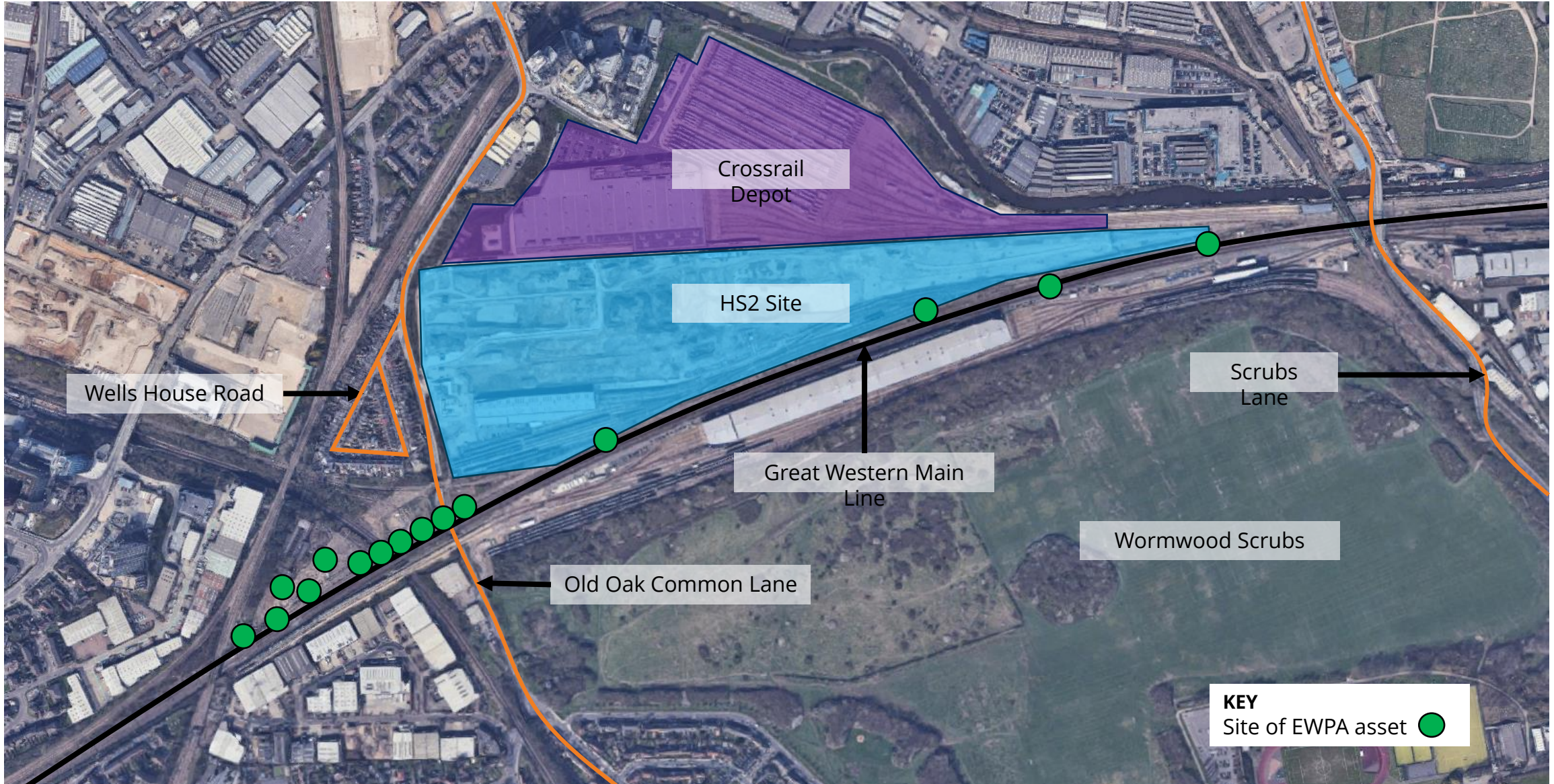


Old Oak Common Station will be a key interchange station on the HS2 network. It will connect HS2 services with Crossrail and GWR services running on the Great Western Main Line.

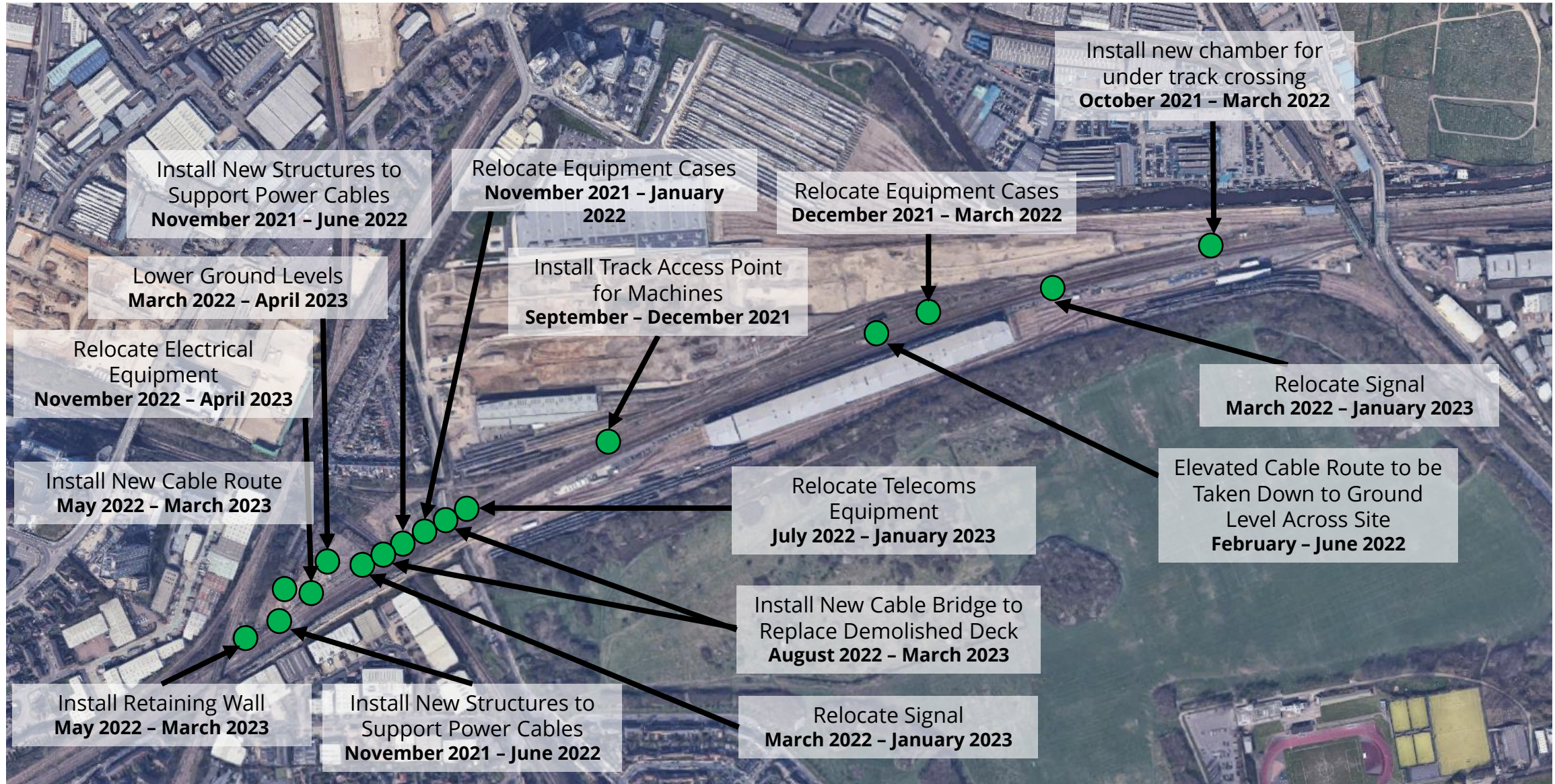
Changes will need to be made to the Network Rail infrastructure in the area to facilitate the construction of the new station and track alignment.

Work is commencing on the first stage of enabling works, known as Early Works Package A (EWPA). South Rail Systems Alliance (SRSA) has been contracted to complete the works.

Early Work



Early Work



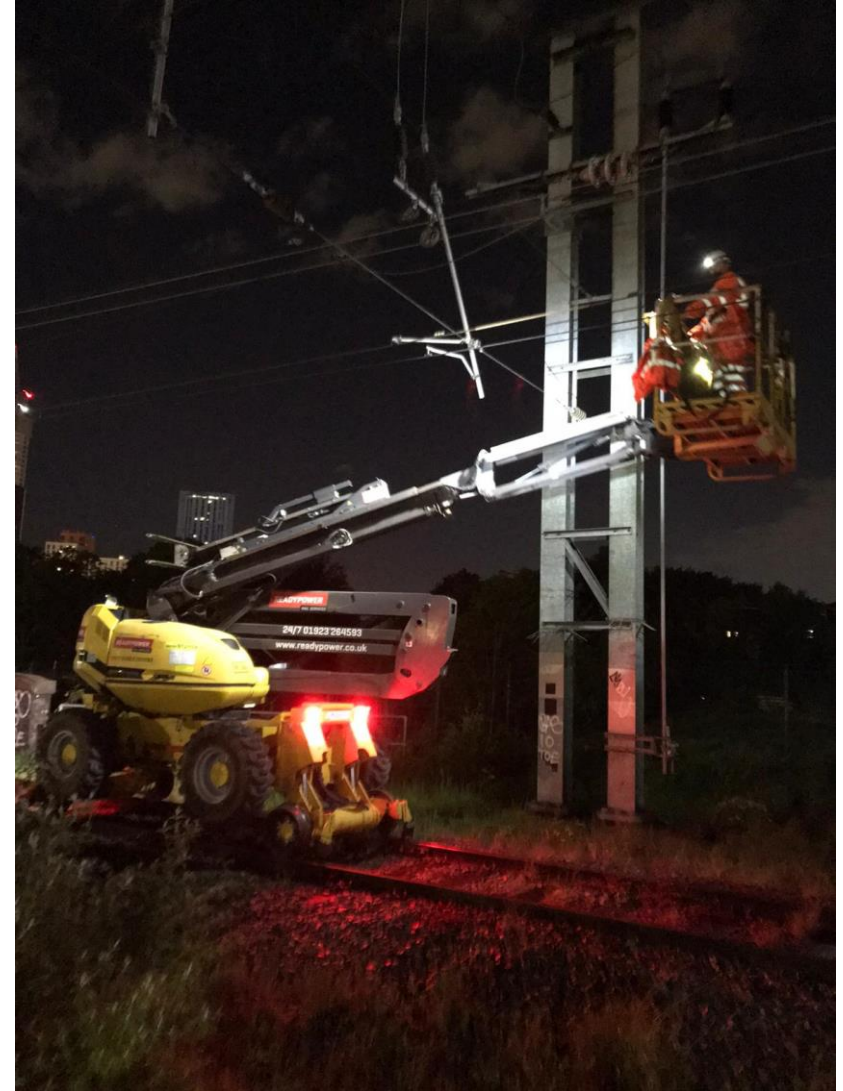
Construction Methodology

SRSA will use construction methodologies which minimise impact to the residents where safe to do so. Where possible the work will be done daytime, though due to the nature of the work, working on the existing infrastructure, night-time working in possessions will be required.

Work on installing piles will be undertaken at daytime in extended possessions to minimise disruption.

Noise reduction methods will be used where practicable and noise monitoring will be undertaken to ensure agreed limits are not exceeded.

Environmental Plan in place which sets out requirements for protection of flora & fauna.



Key Dates

18th September 2021

EWPA works start at Old Oak Common

20th November 2021

Piling Works Commence in Extended Possessions

12th February – 5th March 2022

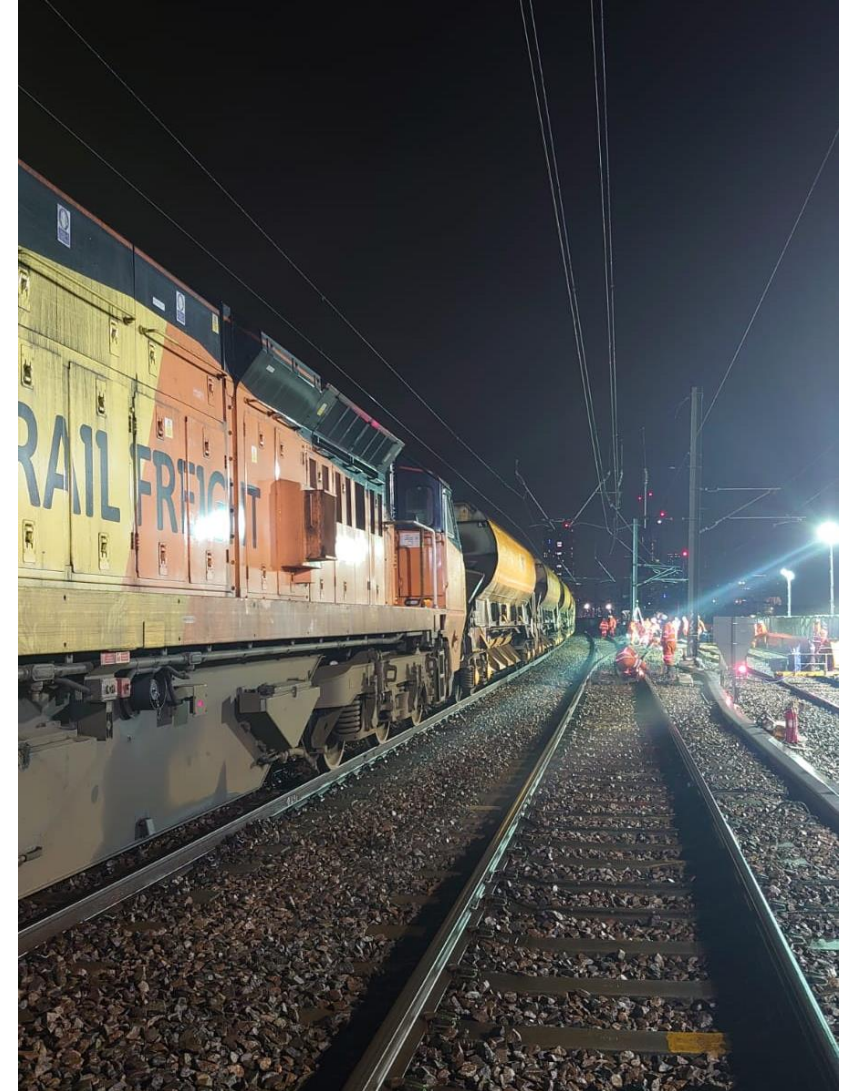
Weekend Extended Possessions to Install New Booms Across all GWML Tracks

Christmas 2022

Demolition of Bridge Deck over Old Oak Common Lane (by Others) and installation of new Cable Bridges

29th April 2023

EWPA works scheduled for completion



How to contact us:

Please do not hesitate to contact us:

Telephone our 24-hour national helpline on **03457 11 41 41**

You can also email myself and Emily the Network Rail Community Engagement team for Calvert at **NRHS2@networkrail.co.uk**

(please note this email is manned in working hours only)

Questions?