

Notice of temporary traffic management Hodgetts Lane, Burton Green

October 2021 | www.hs2.org.uk

High Speed Two (HS2) is the new high speed railway for Britain. Balfour Beatty VINCI (BBV) is working in partnership with HS2 Ltd to build the high-speed railway in your area

The work we will be doing

BBV will be carrying out trial hole excavations in the verge of Hodgetts Lane, Burton Green. This is to identify utility services and carry out ground condition surveys.

When these works will take place

On **15 November for one day**, we will be installing temporary traffic lights on Hodgetts Lane with a single lane closure in place, Hodgetts Lane on this day will remain open.

Between **6 December and 18 December**, we will be installing a **full road closure** from 9.30 am to 3.30 pm each day. This is to ensure the safety of our staff. During these hours a fully signed diversion will be in place. Outside of these hours temporary traffic lights will be used. Access to properties will be maintained at all times. There will be advanced warning signs placed in the area. These works are subject to weather conditions.

We will also keep you updated through www.hs2inwarwickshire.co.uk. **Please see maps overleaf.**

HS2 during the Coronavirus pandemic

We are continually reviewing the works on our construction sites in line with Government and Public Health England (PHE) advice on dealing with COVID-19. The Government's current COVID-19 strategy makes clear that construction activity can continue, as long as it complies with this guidance. The health and safety of our workforce and the communities we affect is our key priority. Please be assured that those sites that are currently still working are doing so because they can operate within PHE and construction industry guidelines.

If you have a question about HS2 or our works, please contact our HS2 Helpdesk team on 08081 434 434 or email hs2enquiries@hs2.org.uk

Notification



Duration of works

- Temporary traffic lights for one day on Hodgetts Lane on 15 November from 08.00am- 6.00 pm
- Road closure in place between 09:30am and 3.30pm from 6 December to 18 December, temporary traffic lights will be in place outside these hours
- Our workforce can be on site one hour before and after to set up and secure our equipment.

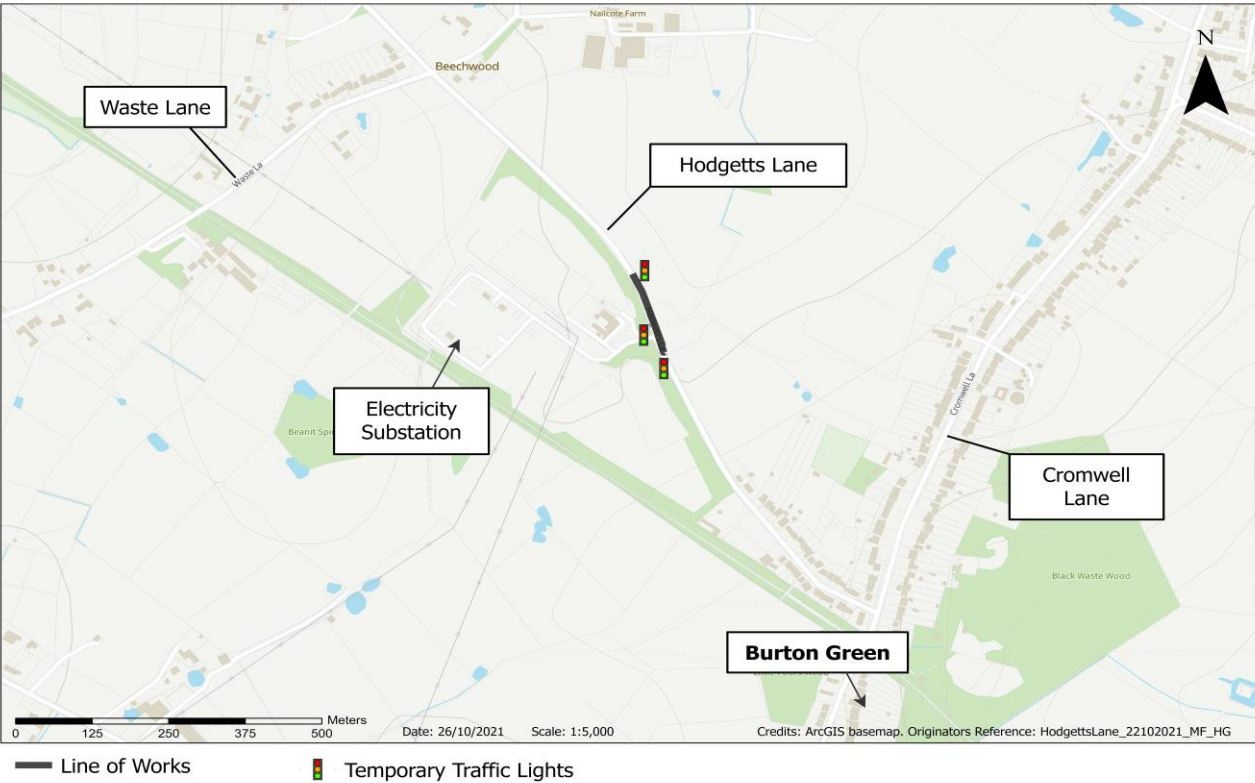
What to expect

- Diversion route in place
- Vacuum excavator, traffic management, welfare facilities and low levels of noise from the work we are completing.

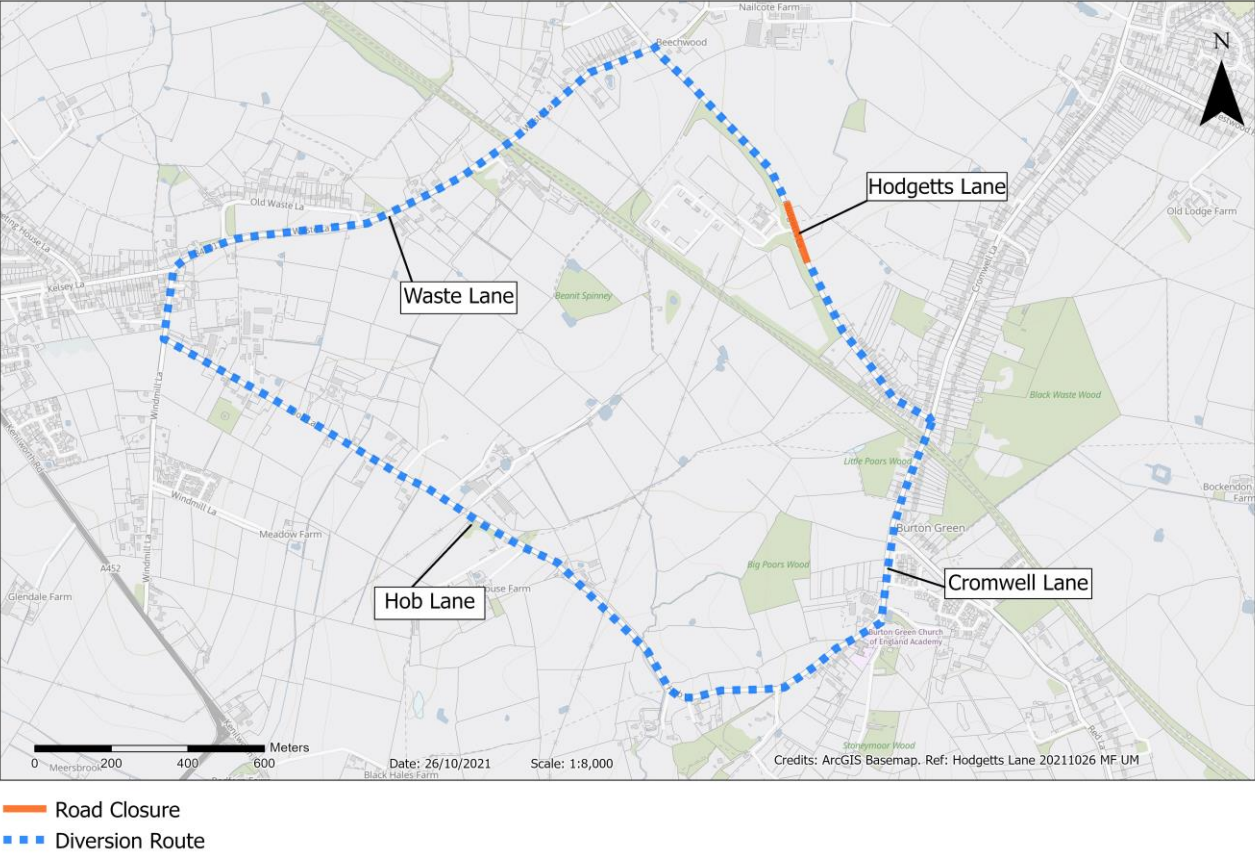
What we will do

- Keep you up to date with any changes at www.hs2inwarwickshire.co.uk
- Keep all sites safe and secure.

Location map 1: 15 November - Temporary traffic lights



Location map 2: 6 December to 18 December - Hodgetts Lane closure & diversion



What else is happening in your area?

Contact our HS2 Helpdesk team

Our team is here to listen and respond to your enquiry, complaint or feedback to help us be a good neighbour.

You can contact our Helpdesk team all day, every day of the year on:

Freephone: **08081 434 434**

Minicom: **08081 456 472**

Email: hs2enquiries@hs2.org.uk

Keep up-to-date with your local community website

To find out more about what's happening in your area and receive regular email updates, you can sign up to our local community websites at: www.hs2inyourarea.co.uk.

About our Community and Business Funds

We are offering two funds that are available to local communities and businesses between the West Midlands and London, to help with the disruption caused by our construction work. These are the Community and Environment Fund (CEF) and the Business and Local Economy Fund (BLEF).

The CEF is designed to give communities the opportunity to share in the benefits of HS2. It is an allocated fund that communities are able to apply for, to help to support local projects that aim to improve their local area.

The BLEF is designed to support local economies that may be disrupted by the construction of HS2. BLEF grants are for local business support organisations and local authorities to help maintain business activity in local communities.

For more information about each of these funds, including how to apply, please visit: <https://www.groundwork.org.uk/hs2funds>



Keeping you informed

We are committed to keeping you informed about work on HS2. This includes ensuring you know what to expect and when to expect it, as well as how we can help.

Residents' Charter and Commissioner

The Residents' Charter is our promise to communicate as clearly as we possibly can with people who live along or near the HS2 route.
www.gov.uk/government/publications/hs2-residents-charter

We also have an independent Residents' Commissioner whose job is to make sure we keep to the promises we make in the Charter and to keep it under constant review. Find reports at:
www.gov.uk/government/collections/hs2-ltd-residents-commissioner
You can contact the Commissioner at:
residentscommissioner@hs2.org.uk

Construction Commissioner

The Construction Commissioner's role is to mediate and monitor the way in which HS2 Ltd manages and responds to construction complaints. You can contact the Construction Commissioner by emailing:
complaints@hs2-cc.org.uk

Property and compensation

You can find out all about HS2 and properties along the line of route by visiting:
www.gov.uk/government/collections/hs2-property
Find out if you're eligible for compensation at:
www.gov.uk/claim-compensation-if-affected-by-hs2

Holding us to account

If you are unhappy for any reason you can make a complaint via the helpline. For more details on our complaints process, please visit our website:
www.hs2.org.uk/how-to-complain

Reference Number: HS2-MW-BBV-Ph1-Ar-No-N1-Prog-works-19-20/11/2021

High Speed Two (HS2) Limited, registered in England and Wales.
Registered office: Two Snowhill, Snow Hill Queensway, Birmingham B4 6GA.
Company registration number: 06791686. VAT registration number: 181 4312 30.

Contact Us

If you have any questions about this notification of works, please get in touch.



24/7 Freephone **08081 434 434**



@ Minicom **08081 456 472**



Email **HS2enquiries@hs2.org.uk**

Write to:

FREEPOST

HS2 Community Engagement

Website **www.hs2.org.uk**

To keep up to date with what is happening in your local area, visit:
www.hs2inyourarea.co.uk

Please contact us if you'd like a free copy of this document in large print, Braille, audio or easy read. You can also contact us for help and information in a different language.

HS2 Ltd is committed to protecting personal information. If you wish to know more about how we use your personal information please see our Privacy Notice
<https://www.gov.uk/government/publications/high-speed-two-ltd-privacy-notice>