



Update notice: work on Wormwood Scrubs

October 2021 | www.hs2.org.uk

High Speed Two (HS2) is the new high speed railway for Britain.

We are continually reviewing the works on our construction sites in line with Government and Public Health England (PHE) advice on dealing with COVID-19.

Stamford Brook Sewer vegetation clearance and hoarding installation update

We previously notified the community about upcoming clearance of vegetation from along the Stamford Brook Sewer (SBS) site boundary, to facilitate the installation of hoarding. You can find further details about this work on our previous notification letter here:

<https://www.hs2.org.uk/work-items/update-notice-work-on-wormwood-scrubs-3/>

In order to mitigate the impact of additional footfall on the remaining main east-west footpath across the scrubs due to the loss of access & footpaths on the northern side of the scrubs whilst the sewer works are undertaken, we will be clearing a footpath adjacent to our site boundary. This is intended to reduce muddy and unsafe walking conditions for users of the scrubs over the winter months. Up to two metres will be cleared along the site boundary to create this path. No trees will be removed as part of this work. Grass and shrubs will be removed under the watching brief of an Ecological Clerk of Works.

This work will take place from Monday 18 October 2021.

If you have a question about HS2 or our works, please contact our HS2 Helpdesk team on 08081 434 434 or email hs2enquiries@hs2.org.uk

Duration of works

Vegetation clearance from the SBS site boundary from week commencing 18 October 2021

What to expect

Vegetation will be cleared in phases under the watching brief of an Ecological Clerk of Works

What we will do

All vegetation will be cleared with appropriate ecological checks by an Ecological Clerk of Works

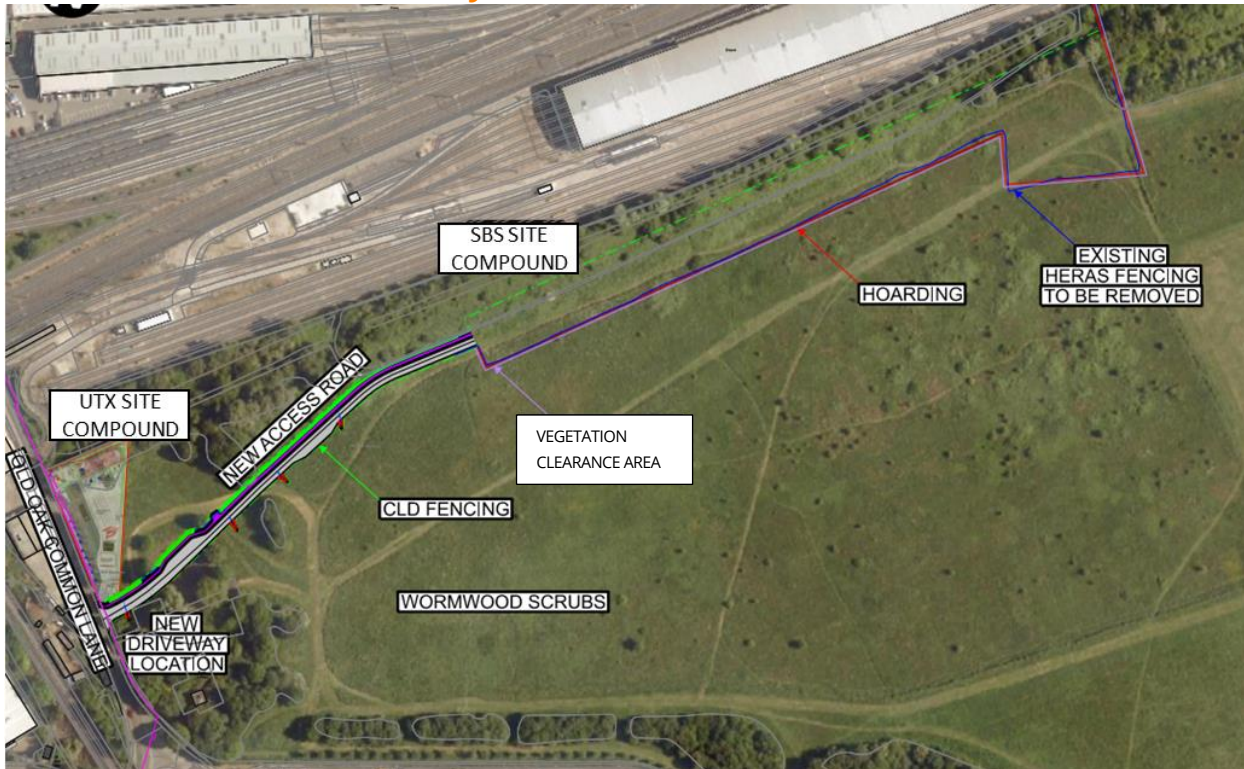
Update notice of work on Wormwood Scrubs

www.hs2.org.uk

Notification



Wormwood Scrubs Site Activity



Contact our HS2 Helpdesk team on **08081 434 434**

What else is happening in your area?

www.hs2.org.uk

Contact our HS2 Helpdesk team

Our team is here to listen and respond to your enquiry, complaint or feedback to help us be a good neighbour.

You can contact our Helpdesk team all day, every day of the year on:

Freephone: **08081 434 434**

Minicom: **08081 456 472**

Email: hs2enquiries@hs2.org.uk

Keep up-to-date with your local community website

To find out more about what's happening in your area and receive regular email updates, you can sign up to our local community websites at: www.hs2inyourarea.co.uk.

About our Community and Business Funds

We are offering two funds that are available to local communities and businesses between the West Midlands and London, to help with the disruption caused by our construction work. These are the Community and Environment Fund (CEF) and the Business and Local Economy Fund (BLEF).

The CEF is designed to give communities the opportunity to share in the benefits of HS2. It is an allocated fund that communities are able to apply for, to help to support local projects that aim to improve their local area.

The BLEF is designed to support local economies that may be disrupted by the construction of HS2. BLEF grants are for local business support organisations and local authorities to help maintain business activity in local communities.

For more information about each of these funds, including how to apply, please visit: <https://www.groundwork.org.uk/hs2funds>



Contact our HS2 Helpdesk team on **08081 434 434**

Keeping you informed

We are committed to keeping you informed about work on HS2. This includes ensuring you know what to expect and when to expect it, as well as how we can help.

Residents' Charter and Commissioner

The Residents' Charter is our promise to communicate as clearly as we possibly can with people who live along or near the HS2 route.
www.gov.uk/government/publications/hs2-residents-charter

We also have an independent Residents' Commissioner whose job is to make sure we keep to the promises we make in the Charter and to keep it under constant review. Find reports at:
www.gov.uk/government/collections/hs2-ltd-residents-commissioner

You can contact the Commissioner at:
residentscommissioner@hs2.org.uk

Construction Commissioner

The Construction Commissioner's role is to mediate and monitor the way in which HS2 Ltd manages and responds to construction complaints. You can contact the Construction Commissioner by emailing:
complaints@hs2-cc.org.uk

Property and compensation

You can find out all about HS2 and properties along the line of route by visiting:
www.gov.uk/government/collections/hs2-property
Find out if you're eligible for compensation at:
www.gov.uk/claim-compensation-if-affected-by-hs2

Holding us to account

If you are unhappy for any reason you can make a complaint by contacting our HS2 Helpdesk team. For more details on our complaints process, please visit our website:
www.hs2.org.uk/how-to-complain

Contact Us

Contact our HS2 Helpdesk team all day, every day of the year on:



Freephone **08081 434 434**



Minicom **08081 456 472**



Email **hs2enquiries@hs2.org.uk**

Write to:

FREEPOST

HS2 Community Engagement

Website **www.hs2.org.uk**

To keep up to date with what is happening in your local area, visit:
www.hs2inyourarea.co.uk

Please contact us if you'd like a free copy of this document in large print, Braille, audio or easy read. You can also contact us for help and information in a different language.

HS2 Ltd is committed to protecting personal information. If you wish to know more about how we use your personal information please see our Privacy Notice
<https://www.gov.uk/government/publication>

Reference number: HS2-MW-BBVS-Ph1-OOC-St-S4-Prog-works-32-15/10/2021

High Speed Two (HS2) Limited, registered in England and Wales.
Registered office: Two Snowhill, Snow Hill Queensway, Birmingham B4 6GA.
Company registration number: 06791686. VAT registration number: 888 8512 56.