

## Notice of Works, Calves Close Spinney (Culworth Road), Chipping Warden

October 2021 | [www.hs2.org.uk](http://www.hs2.org.uk)

High Speed Two (HS2) is the new high speed railway for Britain. We are continually reviewing the works on our construction sites in line with Government and Public Health England (PHE) advice on dealing with COVID-19. Further to the Covid-19 restrictions being relaxed we are now beginning to plan for future face-to-face engagement events and meetings. Whilst we continue to move forward, we will continue to communicate with communities via letters, online meetings and phone calls. You can sign up for regular updates in your local area at [www.hs2.org.uk/in-your-area](http://www.hs2.org.uk/in-your-area)

### What we are doing?

Further to our last newsletter in April 2021 regarding ecology mitigation works we will now begin the next stage of our enabling works to part of Calves Close Spinney woodland within HS2 Act Limits. These works will include:

- Ecology mitigation (bats)
- Tree clearance

### What does this work involve?

The ecology and vegetation need to be cleared now due to different ecology seasons. This activity needs to take place ahead of the main construction activity starting later this year, which includes the construction of the internal access road. We are continuing our established programme of bat surveys and we will be undertaking works to remove the required trees along the line of route, based upon the survey data, these works will begin during October and continue until early November 2021.

Work will be conducted in compliance with all applicable HS2 and Natural England licenses for protected species. Before any trees and vegetation is cleared it will be thoroughly inspected by qualified ecologists.

**If you have a question about HS2 or our works, please contact our HS2 Helpdesk team on 08081 434 434 or email [hs2enquiries@hs2.org.uk](mailto:hs2enquiries@hs2.org.uk)**

### Notification



#### Duration of works

Bat mitigation works will take place between October and early November 2021

#### What to expect

Public Rights of Way diversions between 1 and 10 November 2021

Our normal working hours are between 8:00am and 6:00pm Monday – Friday

Saturday 8:00am and 1:00pm

We may also be on site for one hour's start up and shutdown outside of these times. You may notice some extra traffic on the roads and noise from the machinery.

#### What we will do

We will be working hard to ensure any impact on residents is kept to a minimum during these works.

# Notice of Works, Calves Close Spinney (Culworth Road), Chipping Warden

[www.hs2.org.uk](http://www.hs2.org.uk)

Notification



## What does this work involve? (continued)

Any protected species found to be present will be recorded, appropriate buffers established, and no vegetation will be cleared until the species have left the site, including any nesting birds. The vegetation clearance will be undertaken in accordance with:

- Licencing applications to Natural England for bats

Further details are available online.

<https://www.gov.uk/government/publications/hs2-phase-one-environmental-statement-volume-5-ecology>

The work on HS2 is guided by High-Speed Rail (LondonWestMidlands) Act 2017.

## What consents do we have to undertake this work?

There have been extensive ecological and tree surveys undertaken for the areas identified for clearance. Before any vegetation and trees are cleared the area will be thoroughly inspected by qualified ecologists. Any protected species found to be present will be recorded and no vegetation will be cleared within the buffer areas until the species have left the site, this includes nesting birds.

Public Rights of Way (PRoW) around Calves Close Spinney will be closed during some of this work with diversions using the existing surrounding PRoW network. Diversion routes will be clearly signed and are subject to final consents and approvals.

The below consented diversion via AE12 will be put in place again on Thursday and Friday 11 and 12 November as we have not completed the work. This is subject to weather and may have to extend into Saturday morning 13 November and the start of the following week. (works are wind dependant). We will advise when the works are complete.

**No road closures are required for this work. Access will be from the Culworth Road.**

**Path AE21 will be closed and access diverted onto the AE12 Path between 1 and 3 November 2021**

**Path AE21 will be reopened and act as a diversion for the AE12 closed path between 4 and 10 November 2021**

Please note that between 18 and 29 October 2021 we will have work near to the public right of way AE20 that links path AE21 and AE12. Pedestrian access will be maintained in the AE20 area.

Contact our HS2 Helpdesk team on **08081 434 434**

Please see map enclosed for more information

## **Notice of Works, Calves Close Spinney (Airsoft wood), Chipping Warden**

[www.hs2.org.uk](http://www.hs2.org.uk)

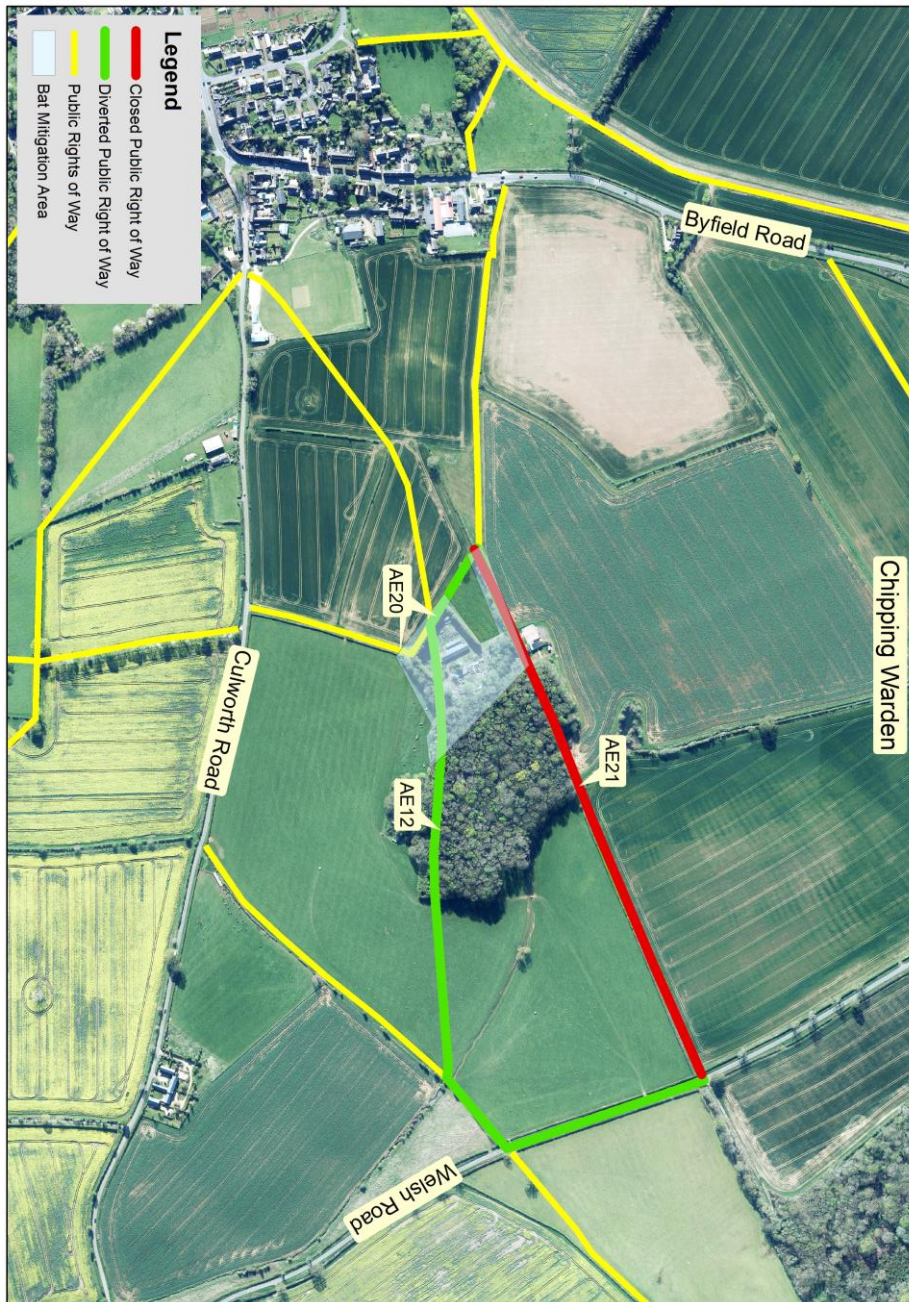
**Notification**



Contact our HS2 Helpdesk team on **08081 434 434**

---

**Location of works and Public Right of Way closure (AE21) and diversion (AE12)  
1 until 3 November 2021**



## Notice of Works, Calves Close Spinney (Airsoft wood), Chipping Warden

[www.hs2.org.uk](http://www.hs2.org.uk)

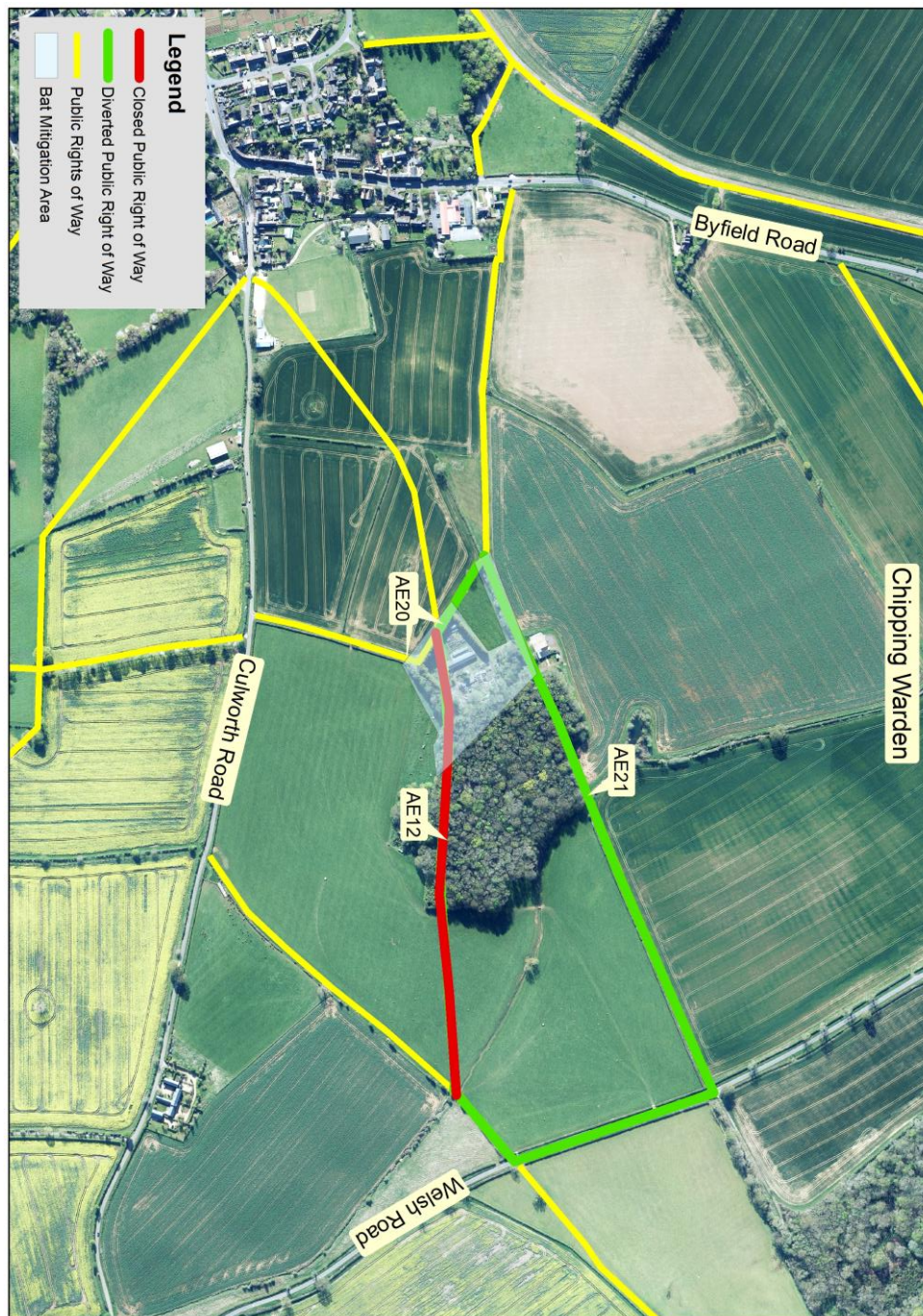
Notification



Contact our HS2 Helpdesk team on **08081 434 434**



**Location of works and Public Right of Way closure (AE12) and diversion (AE21)  
4 until 10 November 2021**



# Keeping you informed

We are committed to keeping you informed about work on HS2. This includes ensuring you know what to expect and when to expect it, as well as how we can help.

## Residents' Charter and Commissioner

The Residents' Charter is our promise to communicate as clearly as we possibly can with people who live along or near the HS2 route.  
[www.gov.uk/government/publications/hs2-residents-charter](http://www.gov.uk/government/publications/hs2-residents-charter)

We also have an independent Residents' Commissioner whose job is to make sure we keep to the promises we make in the Charter and to keep it under constant review. Find reports at:  
[www.gov.uk/government/collections/hs2-ltd-residents-commissioner](http://www.gov.uk/government/collections/hs2-ltd-residents-commissioner)

You can contact the Commissioner at:  
[residentscommissioner@hs2.org.uk](mailto:residentscommissioner@hs2.org.uk)

## Construction Commissioner

The Construction Commissioner's role is to mediate and monitor the way in which HS2 Ltd manages and responds to construction complaints. You can contact the Construction Commissioner by emailing:  
[complaints@hs2-cc.org.uk](mailto:complaints@hs2-cc.org.uk)

## Property and compensation

You can find out all about HS2 and properties along the line of route by visiting:  
[www.gov.uk/government/collections/hs2-property](http://www.gov.uk/government/collections/hs2-property)  
Find out if you're eligible for compensation at:  
[www.gov.uk/claim-compensation-if-affected-by-hs2](http://www.gov.uk/claim-compensation-if-affected-by-hs2)


## Holding us to account

If you are unhappy for any reason you can make a complaint by contacting our HS2 Helpdesk team. For more details on our complaints process, please visit our website:  
[www.hs2.org.uk/how-to-complain](http://www.hs2.org.uk/how-to-complain)

## Contact Us

Contact our HS2 Helpdesk team all day, every day of the year on:

 Freephone **08081 434 434**

 Minicom **08081 456 472**

 Email **[hs2enquiries@hs2.org.uk](mailto:hs2enquiries@hs2.org.uk)**

Write to:

**FREEPOST**

**HS2 Community Engagement**

Website **[www.hs2.org.uk](http://www.hs2.org.uk)**

To keep up to date with what is happening in your local area, visit:  
**[www.hs2inyourarea.co.uk](http://www.hs2inyourarea.co.uk)**

**Please contact us if you'd like a free copy of this document in large print, Braille, audio or easy read. You can also contact us for help and information in a different language.**

HS2 Ltd is committed to protecting personal information. If you wish to know more about how we use your personal information please see our Privacy Notice  
<https://www.gov.uk/government/publications/high-speed-two-ltd-privacy-notice>

**Reference number: FUS\_AWN\_0270 HS2-EW-Fusion -Ph1-Ar-Ce-C3-Prog-works-30-10/08/2021**

High Speed Two (HS2) Limited, registered in England and Wales.  
Registered office: Two Snowhill, Snow Hill Queensway, Birmingham B4 6GA.  
Company registration number: 06791686. VAT registration number: 888 8512 56.