

## Notice of works Upper Boddington

October 2021 | [www.hs2.org.uk](http://www.hs2.org.uk)

### Notification



High Speed Two (HS2) is the new high speed railway for Britain. We are continually reviewing the works on our construction sites in line with Government and Public Health England (PHE) advice on dealing with COVID-19. Further to the Covid-19 restrictions being relaxed we are now beginning to plan for future face-to-face engagement events and meetings. Whilst we continue to move forward, we will still continue to communicate with communities via letters, online meetings and phone calls. You can sign up for regular updates in your local area at [www.hs2.org.uk/in-your-area](http://www.hs2.org.uk/in-your-area)

### What are we doing?

We have a number of preparatory activities taking place over the coming months ahead of the future construction of the railway. We are carrying out the next phase of works which includes ecology mitigation, vegetation clearance and the translocation of a section of woodland near Upper Boddington. The enabling works required are detailed below;

#### October to December 2021

- Ecology mitigation and vegetation clearance
- Glyn Davies Wood woodland / soil transfer

**If you have a question about HS2 or our works, please contact our HS2 Helpdesk team on 08081 434 434 or email [hs2enquiries@hs2.org.uk](mailto:hs2enquiries@hs2.org.uk)**

### Duration of works

Works will take place from October until the end of 2021

### What to expect

To complete this work we need to undertake; ecology mitigation, tree and vegetation clearance,

You may notice some extra traffic on the roads and noise from the machinery

Our normal working hours are between 8:00am and 6:00pm Monday – Friday and Saturday 8:00am – 1:00pm

### What we will do

We will be working hard to ensure any impact on residents is kept to a minimum during these work

# Notice of works Upper Boddington

Notification



[www.hs2.org.uk](http://www.hs2.org.uk)

**October to December 2021**

## Ecology surveys and vegetation clearance

We are continuing our established programme of bat surveys and we will be undertaking works to remove the required trees along the line of route in the coming months. Based upon the survey data, these works will continue through October 2021.

There will be further ecological and tree surveys undertaken of the vegetation and trees that we need to subsequently remove.

Work will be conducted in compliance with all applicable HS2 and Natural England licenses for protected species. Before any vegetation is cleared it will be thoroughly inspected by qualified ecologists. Any protected species found to be present will be recorded, appropriate buffers established and no vegetation will be cleared until the species have left the site, including any nesting birds. The tree and vegetation clearance will be undertaken in accordance with:

- Licencing applications to Natural England for bats

Further details are available online.

<https://www.gov.uk/government/publications/hs2-phase-one-environmental-statement-volume-5-ecology>

The work on HS2 is guided by High-Speed Rail (LondonWestMidlands) Act 2017.

## Glyn Davies Wood wood/soil transfer

Ahead of the main construction works we need to prepare the line of route. This includes the partial clearance of Glyn Davies Wood. Details of the clearance areas, areas of soils translocation and planting can be found on the map in this notification. The vegetation and ancient woodland soils will be removed by a specialist team using machinery and handheld tools. We will be installing track matting between Glyn Davies Wood donor site (where the soil is taken from) and the receptor site (where the soil is taken to) to protect the soils.

# Notice of works, Upper Boddington

Notification



[www.hs2.org.uk](http://www.hs2.org.uk)

## How will you ensure that you do not affect nesting birds and other ecology?

An ecologist will survey the area to be cleared and record any findings. Any vegetation that cannot be removed, due to the presence of protected ecology, will be left undisturbed with the appropriate buffer until further surveys confirm that the ecology is no longer present.

## Ancient woodland clearance

Where effects on ancient woodland cannot be reasonably avoided, we have committed to provide a range of compensation measures, in line with advice provided by Natural England and the Forestry Commission, including ancient woodland soil transfer and new planting. The compensatory planting in our plans aims to join up existing ancient woodlands to deliver a more joined environment that will support biodiversity. We will maintain, monitor and manage these sites for up to 50 years to ensure they are established correctly.

We have published an Ancient Woodland Strategy, outlining each directly impacted ancient woodland and the specific compensation measures to be taken in response to any losses at these woodlands. This is based on the impacts identified in the Environmental Statement and taking account of the Supplementary Environmental Statements and Additional Provisions.

# Notice of works, Upper Boddington

Notification



[www.hs2.org.uk](http://www.hs2.org.uk)

## Seasonality of ancient woodland soils translocation

Ancient woodlands are extremely important for the environment, typically, they are areas that have been continuously wooded since 1600 AD and provide complex and unique ecosystems. The aim of ancient woodland soils transfer is to create a woodland that replicates as much as possible the characteristics of ancient woodland, acknowledging that it will never be possible to directly compensate for ancient woodland loss. We will transfer the soil by excavating it from the area known as the donor site and moving it to a suitable new area known as the receptor site.

A suitable open field area receptor site adjacent to Glyn Davies Wood has been chosen to allow this. Adjacent vegetation, woodland trees and the existing tree canopy will be retained to provide connectivity.

The receptor site design has been informed by site surveys carried out by experienced surveyors. During this process the team has identified woodland items such as deadwood, coppice stools and saplings that are to be translocated to the new site. The donor site will now be cleared of trees and vegetation and the pre-identified key woodland items are to be translocated. Soil is then carefully excavated and transferred to the receptor site. The new site will then be monitored and managed to ensure that new vegetation can become established.

We are working with a team of experienced habitat translocation contractors to ensure that protected species, deadwood habitats and the unique flora associated with these environments are transferred successfully.

The receptor site will be enclosed with deer and rabbit proof fencing to protect the planted saplings and soils that have been transferred.

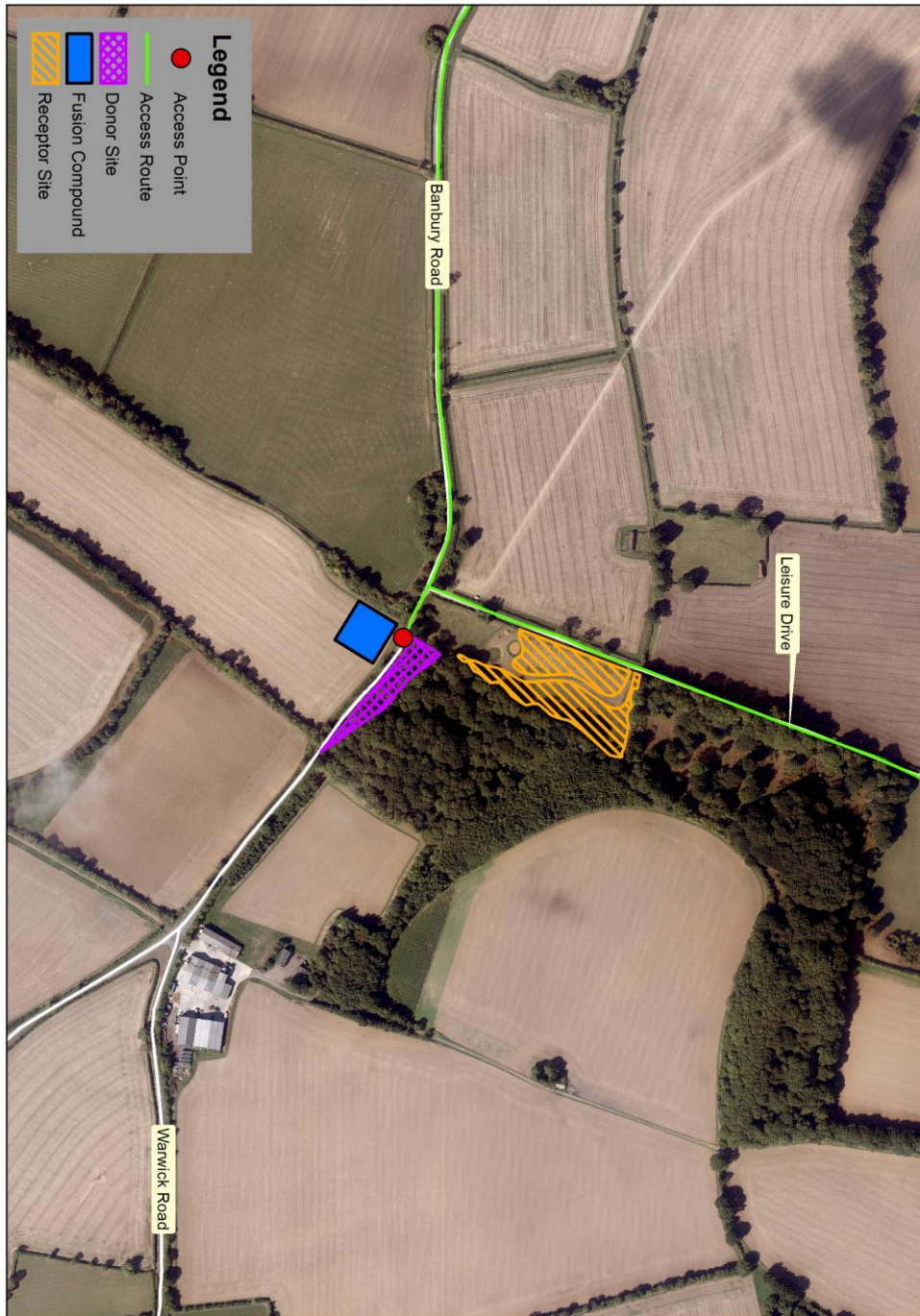
# Notice of works Wood, Boddington

Notification



[www.hs2.org.uk](http://www.hs2.org.uk)

Location of donor and receptor sites



Contact our HS2 Helpdesk team on **08081 434 434**

# Keeping you informed

We are committed to keeping you informed about work on HS2. This includes ensuring you know what to expect and when to expect it, as well as how we can help.

## Residents' Charter and Commissioner

The Residents' Charter is our promise to communicate as clearly as we possibly can with people who live along or near the HS2 route.  
[www.gov.uk/government/publications/hs2-residents-charter](http://www.gov.uk/government/publications/hs2-residents-charter)

We also have an independent Residents' Commissioner whose job is to make sure we keep to the promises we make in the Charter and to keep it under constant review. Find reports at:  
[www.gov.uk/government/collections/hs2-ltd-residents-commissioner](http://www.gov.uk/government/collections/hs2-ltd-residents-commissioner)

You can contact the Commissioner at:  
[residentscommissioner@hs2.org.uk](mailto:residentscommissioner@hs2.org.uk)

## Construction Commissioner

The Construction Commissioner's role is to mediate and monitor the way in which HS2 Ltd manages and responds to construction complaints. You can contact the Construction Commissioner by emailing:  
[complaints@hs2-cc.org.uk](mailto:complaints@hs2-cc.org.uk)

## Property and compensation

You can find out all about HS2 and properties along the line of route by visiting:  
[www.gov.uk/government/collections/hs2-property](http://www.gov.uk/government/collections/hs2-property)  
Find out if you're eligible for compensation at:  
[www.gov.uk/claim-compensation-if-affected-by-hs2](http://www.gov.uk/claim-compensation-if-affected-by-hs2)

## Holding us to account

If you are unhappy for any reason you can make a complaint by contacting our HS2 Helpdesk team. For more details on our complaints process, please visit our website:  
[www.hs2.org.uk/how-to-complain](http://www.hs2.org.uk/how-to-complain)

## Contact Us

Contact our HS2 Helpdesk team all day, every day of the year on:

 Freephone **08081 434 434**

 Minicom **08081 456 472**

 Email **[hs2enquiries@hs2.org.uk](mailto:hs2enquiries@hs2.org.uk)**

Write to:

**FREEPOST**

**HS2 Community Engagement**

Website **[www.hs2.org.uk](http://www.hs2.org.uk)**

To keep up to date with what is happening in your local area, visit:  
**[www.hs2inyourarea.co.uk](http://www.hs2inyourarea.co.uk)**

**Please contact us if you'd like a free copy of this document in large print, Braille, audio or easy read. You can also contact us for help and information in a different language.**

HS2 Ltd is committed to protecting personal information. If you wish to know more about how we use your personal information please see our Privacy Notice  
<https://www.gov.uk/government/publications/high-speed-two-ltd-privacy-notice>

**Reference number: FUS\_AWN\_0245 HS2-EW-Fusion -Ph1-Ar-Ce-C2-Prog-works-9-20/07/2021**

High Speed Two (HS2) Limited, registered in England and Wales.  
Registered office: Two Snowhill, Snow Hill Queensway, Birmingham B4 6GA.  
Company registration number: 06791686. VAT registration number: 888 8512 56.