

# Notice of road closures, Wormleighton

September 2021 | [www.hs2.org.uk](http://www.hs2.org.uk)

High Speed Two (HS2) is the new high speed railway for Britain. We are continually reviewing the works on our construction sites in line with Government and Public Health England (PHE) advice on dealing with COVID-19. Further to the Covid-19 restrictions being relaxed we are now beginning to plan for future face-to-face engagement events and meetings. Whilst we continue to move forward, we will still continue to communicate with communities via letters, online meetings and phone calls. You can sign up for regular updates in your local area at [www.hs2.org.uk/in-your-area](http://www.hs2.org.uk/in-your-area)

## What we will be doing?

Following on from the earlier completed ecology surveys we will now be continuing our established programme of bat and ecology mitigation. To enable this to happen safely we will complete the works over eight phases of highway closures. We will need to have daily closures, including some Saturdays, between 27 September and 19 November 2021, during the hours of 09.30am and 3.30pm (Mon – Fri) and 08.00am to 1.00pm (Sat). This is to allow ecologists to safely observe and where necessary climb roadside trees to check for habitat. Subject to the outcome of these surveys tree limbs / trees may be felled at this time. We will also be undertaking roadside vegetation clearance as part of the great crested newt mitigation works. The programme, location and type of traffic management required is detailed below:

**Full road closures between the hours of 09.30am and 3.30pm that will include bat mitigation and vegetation clearance. Closures on Banbury Road will also include HS2 highway improvement works by EKFB.**

**If you have a question about HS2 or our works, please contact our HS2 Helpdesk team on 08081 434 434 or email [hs2enquiries@hs2.org.uk](mailto:hs2enquiries@hs2.org.uk)**

## Notification



### Duration of works

We will be closing the following roads;

Banbury Road and Stoneton Lane /Leisure Drive, Claydon Road and Lower Boddington Road over 8 phases between

Monday 27 September and Friday 19 November 2021

### Working Hours

Monday to Friday 9.30am and 3.30pm

Saturday 08.00am until 1.00pm

### What to expect

Some additional traffic on local roads. Some noise from equipment used for the works

Traffic diversion route

### What we will do

Manage any impacts, such as traffic and noise with the aim of reducing or removing them

# Notice of road closures, Wormleighton

[www.hs2.org.uk](http://www.hs2.org.uk)

Notification



## What we will be doing continued

Please see enclosed maps for details, diversion routes are in accordance with highway standards and subject to final consent.

### Phase 1

Stoneton Lane/Leisure Drive

Monday 27 September until Thursday 30 September 2021 (4 weekdays)

### Phase 2

Warwick Road (between Banbury Road junction and towards Upper Boddington) local diversion

Friday 1 October and Monday 4 October 2021 (2 weekdays)

### Phase 3

Banbury Road (between Warwick Road junction and Boddington Road) longer diversion

Tuesday 5 October to Friday 8 October and Monday 11 October 2021 (5 weekdays)

### Phase 4

Boddington Road

Tuesday 12 October until Friday 15 October 2021 (4 weekdays)

### Phase 5 and 6

Banbury Road (two different locations for each phase)

Monday 18 October until Thursday 21 October 2021 (4 weekdays)

### Phase 7 to include Saturday working

Banbury Road (between Stoneton Lane/Leisure Drive and junction with Warwick Road)

Friday 22 October until Friday 12 November 2021 (16 weekdays and 3 Saturday shifts)

### Phase 8 (5 weekdays)

Claydon Road

Monday 15 November until Friday 19 November 2021

---

Contact our HS2 Helpdesk team on **08081 434 434**

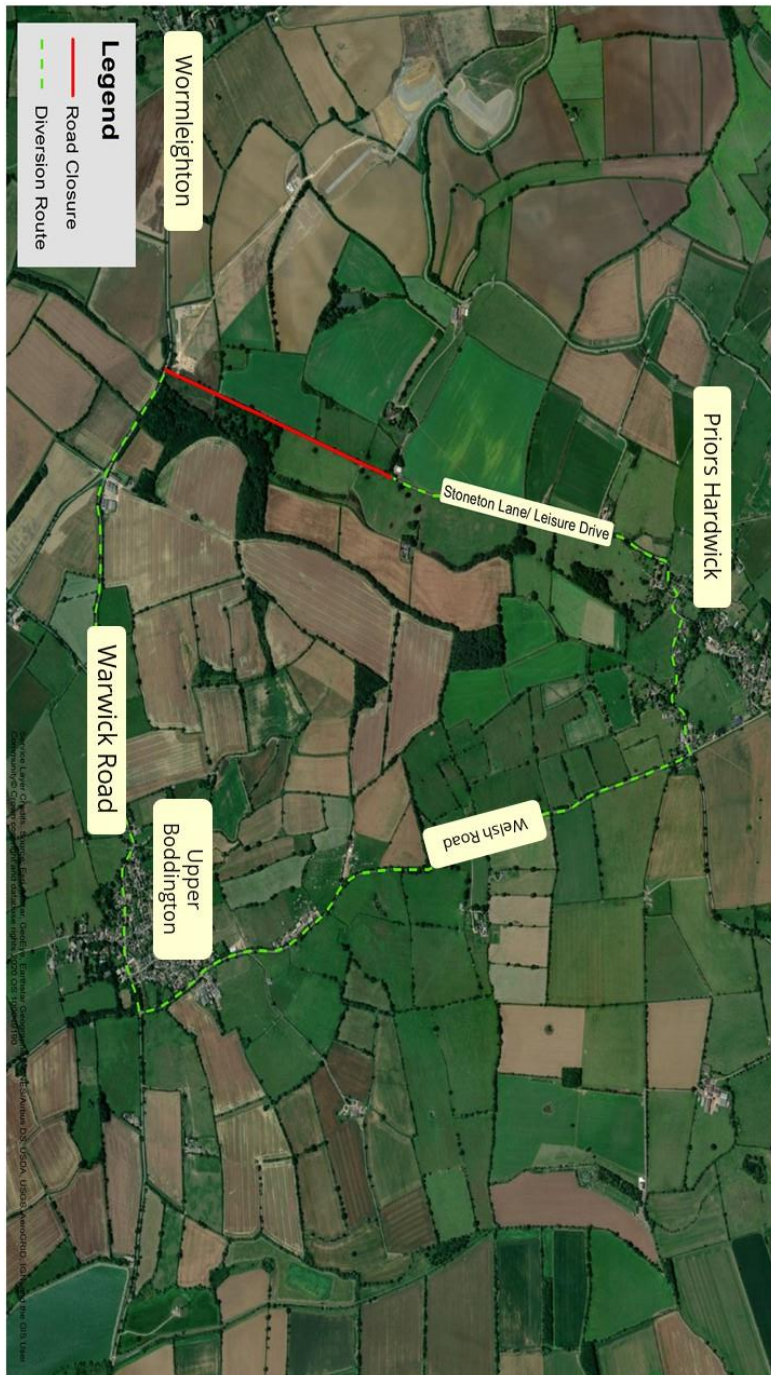
# Notice of road closures, Wormleighton

Notification



[www.hs2.org.uk](http://www.hs2.org.uk)

**Phase 1 Stoneton Lane/Leisure Drive 27 – 30 September 2021**



Contact our HS2 Helpdesk team on **08081 434 434**



# Notice of road closures, Wormleighton

## Notification



[www.hs2.org.uk](http://www.hs2.org.uk)

## Phase 2

### Warwick Road (between Banbury Road junction and towards Upper Boddington)

## 1 October and 4 October 2021



Contact our HS2 Helpdesk team on **08081 434 434**

# Notice of road closures, Wormleighton

Notification



[www.hs2.org.uk](http://www.hs2.org.uk)

## Phase 3

**Banbury Road (between Warwick Road junction and Boddington Road)**

**5 October until 8 October and 11 October 2021**



Contact our HS2 Helpdesk team on **08081 434 434**



# Notice of road closures, Wormleighton

Notification



[www.hs2.org.uk](http://www.hs2.org.uk)

Phase 4

Boddington Road 12 until 15 October 2021



Contact our HS2 Helpdesk team on **08081 434 434**

# Notice of road closures, Wormleighton

Notification



[www.hs2.org.uk](http://www.hs2.org.uk)

**Phase 5 Banbury Road 18 and 19 October 2021**

**Between Claydon and Upper Boddington crossroads and Lower Boddington**



Contact our HS2 Helpdesk team on **08081 434 434**



# Notice of road closures, Wormleighton

Notification



[www.hs2.org.uk](http://www.hs2.org.uk)

**Phase 6 Banbury Road 20 and 21 October 2021**  
**(Between Stoneton Lane/Leisure Drive and Wormleighton)**



Contact our HS2 Helpdesk team on **08081 434 434**



# Notice of road closures, Wormleighton

Notification



[www.hs2.org.uk](http://www.hs2.org.uk)

**Phase 7 to include Saturday working Banbury Road (between Stoneton Lane / Leisure Drive and junction with Warwick Road)**  
**22 October until 12 November 2021**



Contact our HS2 Helpdesk team on **08081 434 434**

# Notice of road closures, Wormleighton

Notification



[www.hs2.org.uk](http://www.hs2.org.uk)

**Phase 8 Claydon Road 15 until 19 November 2021**



Contact our HS2 Helpdesk team on **08081 434 434**



# Keeping you informed

We are committed to keeping you informed about work on HS2. This includes ensuring you know what to expect and when to expect it, as well as how we can help.

## Residents' Charter and Commissioner

The Residents' Charter is our promise to communicate as clearly as we possibly can with people who live along or near the HS2 route.  
[www.gov.uk/government/publications/hs2-residents-charter](http://www.gov.uk/government/publications/hs2-residents-charter)

We also have an independent Residents' Commissioner whose job is to make sure we keep to the promises we make in the Charter and to keep it under constant review. Find reports at:  
[www.gov.uk/government/collections/hs2-ltd-residents-commissioner](http://www.gov.uk/government/collections/hs2-ltd-residents-commissioner)

You can contact the Commissioner at:  
[residentscommissioner@hs2.org.uk](mailto:residentscommissioner@hs2.org.uk)

## Construction Commissioner

The Construction Commissioner's role is to mediate and monitor the way in which HS2 Ltd manages and responds to construction complaints. You can contact the Construction Commissioner by emailing:  
[complaints@hs2-cc.org.uk](mailto:complaints@hs2-cc.org.uk)

## Property and compensation

You can find out all about HS2 and properties along the line of route by visiting:  
[www.gov.uk/government/collections/hs2-property](http://www.gov.uk/government/collections/hs2-property)  
Find out if you're eligible for compensation at:  
[www.gov.uk/claim-compensation-if-affected-by-hs2](http://www.gov.uk/claim-compensation-if-affected-by-hs2)

## Holding us to account

If you are unhappy for any reason you can make a complaint by contacting our HS2 Helpdesk team. For more details on our complaints process, please visit our website:  
[www.hs2.org.uk/how-to-complain](http://www.hs2.org.uk/how-to-complain)

## Contact Us

Contact our HS2 Helpdesk team all day, every day of the year on:

 Freephone **08081 434 434**

 Minicom **08081 456 472**

 Email **[hs2enquiries@hs2.org.uk](mailto:hs2enquiries@hs2.org.uk)**

Write to:

**FREEPOST**

**HS2 Community Engagement**

Website **[www.hs2.org.uk](http://www.hs2.org.uk)**

To keep up to date with what is happening in your local area, visit:  
**[www.hs2inyourarea.co.uk](http://www.hs2inyourarea.co.uk)**

**Please contact us if you'd like a free copy of this document in large print, Braille, audio or easy read. You can also contact us for help and information in a different language.**

HS2 Ltd is committed to protecting personal information. If you wish to know more about how we use your personal information please see our Privacy Notice  
<https://www.gov.uk/government/publications/high-speed-two-ltd-privacy-notice>

**Reference number: HS2-EW-Fusion -Ph1-Ar-Ce-C3-Traf-24-09/03/2021 FUS\_AWN\_0256**

High Speed Two (HS2) Limited, registered in England and Wales.  
Registered office: Two Snowhill, Snow Hill Queensway, Birmingham B4 6GA.  
Company registration number: 06791686. VAT registration number: 888 8512 56.