

# Notice of vegetation works Addison Road

September 2021 | [www.hs2.org.uk](http://www.hs2.org.uk)

High Speed Two (HS2) is the new high speed railway for Britain. We are continually reviewing the works on our construction sites in line with Government and Public Health England (PHE) advice on dealing with COVID-19. Further to the Covid-19 restrictions being relaxed we are now beginning to plan for future face-to-face engagement events and meetings. Whilst we continue to move forward, we will continue to communicate with communities via letters, online meetings and phone calls. You can sign up for regular updates in your local area at [www.hs2.org.uk/in-your-area](http://www.hs2.org.uk/in-your-area)

## What will we be doing?

Before the main railway construction works for the realignment and reconstruction of the new bridge commences on Addison Road, we need to carry out the removal of roadside hedgerows and vegetation clearance along the highway boundary. Where appropriate some sections of vegetation will be replaced with boundary fencing, this will help keep the site secure ahead of future construction activities.

We will also be refreshing the road line markings along the highway.

As some of these works will need to be carried out on or adjacent to the carriageway we will need to put in place a temporary road closure to undertake these works safely.

The works will take place from Monday 20 September to Friday 1 October 2021 (including Saturday 25 September 2021).

Addison Road will be closed from 8am till 6pm weekdays and 8am to 1pm on a Saturday where the local diversion route advised overleaf will be in place. Outside of these times Addison Road will be open as normal.

Through access to emergency services will be permitted during this road closure. Local access to properties and farmers fields near to the works will be maintained and the scheduled bus service will be permitted access through the closure.

**If you have a question about HS2 or our works, please contact our HS2 Helpdesk team on 08081 434 434 or email [hs2enquiries@hs2.org.uk](mailto:hs2enquiries@hs2.org.uk)**

## Notification



### Duration of works

The works will start from Monday 20 September 2021 until the Friday 1 October 2021 (including Saturday 25 September 2021).

Normal working hours:  
Monday to Friday 8am – 6pm and Saturday 8am – 1pm

Our contractors may also be on site for one hour's quiet start up and shut down outside of these times

### What to expect

Daily full road closure of Addison Road from Monday 20 September 2021 to Friday 1 October 2021 from 8am to 6pm and including Saturday 25 September 8am – 1pm

Outside of these times each night Addison Road will be open to traffic as normal.

Signposted local diversion route in place.

Some additional traffic on local roads.

# Notice of vegetation works Addison Road

Notification



[www.hs2.org.uk](http://www.hs2.org.uk)

## What consents do we have to undertake these works?

There have been extensive ecological and tree surveys undertaken for the vegetation identified for clearance.

Before any vegetation is cleared it will be thoroughly inspected by qualified ecologists. Any protected species found to be present will be recorded and no vegetation will be cleared until the species have left the site. Any vegetation that cannot be removed due to the presence of protected ecology will be left until further surveys confirm that the ecology is no longer present.

The vegetation clearance will be undertaken in accordance with:

HS2 Organisational European Protected Species Great for Crested Newt Licences WML025. First issued March 2017.

HS2 Organisational European Protected Species Licence for Badger WML024. First issued February 2018.

Further details are available online.

<https://www.gov.uk/government/publications/hs2-phase-one-environmental-statement-volume-5-ecology>

The work on HS2 is guided by High-Speed Rail (LondonWestMidlands) Act 2017.

<http://www.legislation.gov.uk/ukpga/2017/7/contents/enacted>

## How will this works affect you?

You may notice extra traffic on the roads due to the workforce and equipment movements in the area. HS2 construction traffic, HGV's and all vehicles of 7.5 tonnes or greater making deliveries to the site will use The Broadway from the A41 along Perry Hill/ Gawcott Road/ Werner Terrace to Addison Road.

We will be closely monitoring the roads around the site and regular road sweeping will take place.

Access to the working areas will be along Addison Road. Temporary Road closure and diversion verge access signage will be installed. These will be on standard A-frames and secured with ballasted sandbags which will be placed on the roadside verges. These will be in place during the diversion.

Access to businesses and farms to the south of the existing Addison Road rail overbridge will be provided from the Werner Terrace junction access only. Signage will be erected advising of this diversion route.

Contact our HS2 Helpdesk team on **08081 434 434**

# Notice of vegetation works

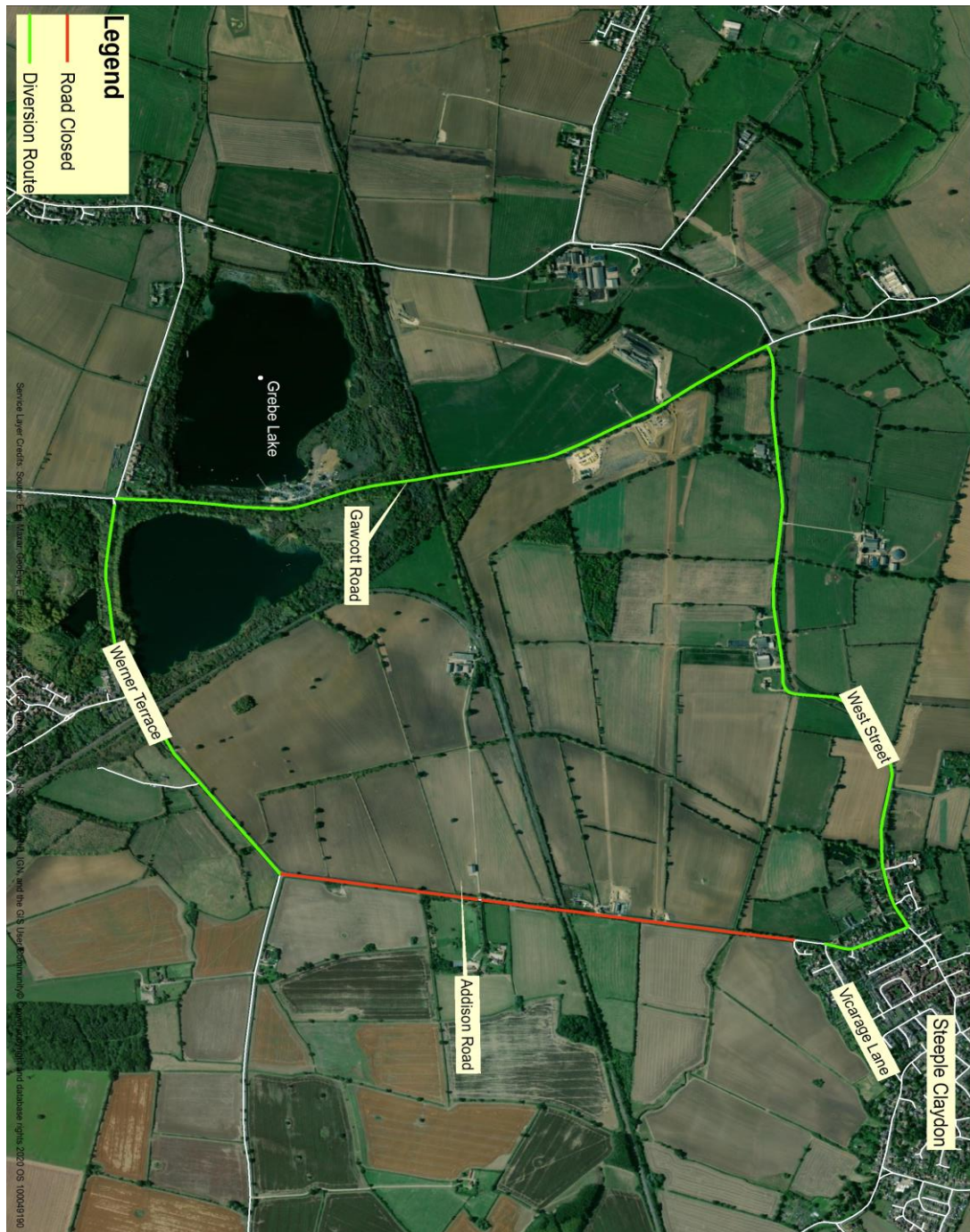
## Addison Road

Notification



[www.hs2.org.uk](http://www.hs2.org.uk)

Map below shows the diversion route that will be in place between  
20 September to 1 October 2021



Contact our HS2 Helpdesk team on **08081 434 434**

# Keeping you informed

We are committed to keeping you informed about work on HS2. This includes ensuring you know what to expect and when to expect it, as well as how we can help.

## Residents' Charter and Commissioner

The Residents' Charter is our promise to communicate as clearly as we possibly can with people who live along or near the HS2 route.  
[www.gov.uk/government/publications/hs2-residents-charter](http://www.gov.uk/government/publications/hs2-residents-charter)

We also have an independent Residents' Commissioner whose job is to make sure we keep to the promises we make in the Charter and to keep it under constant review. Find reports at:  
[www.gov.uk/government/collections/hs2-ltd-residents-commissioner](http://www.gov.uk/government/collections/hs2-ltd-residents-commissioner)

You can contact the Commissioner at:  
[residentscommissioner@hs2.org.uk](mailto:residentscommissioner@hs2.org.uk)

## Construction Commissioner

The Construction Commissioner's role is to mediate and monitor the way in which HS2 Ltd manages and responds to construction complaints. You can contact the Construction Commissioner by emailing:  
[complaints@hs2-cc.org.uk](mailto:complaints@hs2-cc.org.uk)

## Property and compensation

You can find out all about HS2 and properties along the line of route by visiting:  
[www.gov.uk/government/collections/hs2-property](http://www.gov.uk/government/collections/hs2-property)  
Find out if you're eligible for compensation at:  
[www.gov.uk/claim-compensation-if-affected-by-hs2](http://www.gov.uk/claim-compensation-if-affected-by-hs2)

## Holding us to account

If you are unhappy for any reason you can make a complaint by contacting our HS2 Helpdesk team. For more details on our complaints process, please visit our website:  
[www.hs2.org.uk/how-to-complain](http://www.hs2.org.uk/how-to-complain)

## Contact Us

Contact our HS2 Helpdesk team all day, every day of the year on:

 Freephone **08081 434 434**

 Minicom **08081 456 472**

 Email **[hs2enquiries@hs2.org.uk](mailto:hs2enquiries@hs2.org.uk)**

Write to:

**FREEPOST**

**HS2 Community Engagement**

Website **[www.hs2.org.uk](http://www.hs2.org.uk)**

To keep up to date with what is happening in your local area, visit:  
**[www.hs2inyourarea.co.uk](http://www.hs2inyourarea.co.uk)**

**Please contact us if you'd like a free copy of this document in large print, Braille, audio or easy read. You can also contact us for help and information in a different language.**

HS2 Ltd is committed to protecting personal information. If you wish to know more about how we use your personal information please see our Privacy Notice  
<https://www.gov.uk/government/publications/high-speed-two-ltd-privacy-notice>

**Reference number: FUS\_AWN\_0257 HS2-EW-Fusion -Ph1-Ar-Ce-C2-Prog-works-19-26/08/2021**

High Speed Two (HS2) Limited, registered in England and Wales.  
Registered office: Two Snowhill, Snow Hill Queensway, Birmingham B4 6GA.  
Company registration number: 06791686. VAT registration number: 888 8512 56.