

Notice of building demolition and preparation of bat house update, Lower Thorpe

August 2021 | www.hs2.org.uk

High Speed Two (HS2) is the new high speed railway for Britain. Further to the Covid-19 restrictions being relaxed we are now beginning to plan for future face-to-face engagement events and meetings. Whilst we continue to move forward we will still continue to communicate with communities via letters, online meetings and phone calls. You can sign up for regular updates in your local area at www.hs2.org.uk/in-your-area

What we will be doing?

In December 2020 we advised you of our continuing works in your area in relation to archaeology and the construction of a bat house. The archaeological works are now complete, and construction of the bat house is now planned to commence in September 2021.

- Bat mitigation and off peak road closure
- Demolition work
- Construction of a bat house

Bat Mitigation and road closure

Part of the work at Twin Oaks and Lower Thorpe involves the removal of the roof tiles from existing buildings ahead of their demolition. The works will be supervised by an ecologist who will be present on site and provide the appropriate approvals for all protected species prior to the works commencement. Works will be undertaken in accordance with the approved licence methodology. In order to complete the removal of the roof tiles safely we will need to close Banbury Lane between 09.30am and 3.30pm on the 11 October 2021 until 22 October 2021. We are not planning to close Banbury Lane on Saturdays during this period. The road will be open as normal outside of these hours.

If you have a question about HS2 or our works, please contact our HS2 Helpdesk team on 08081 434 434 or email hs2enquiries@hs2.org.uk

Notification



Duration of works

Works will begin in September 2021 and continue until Winter 2021

What to expect

To complete this work we need to demolish existing buildings and construct a new bat house.

Banbury Lane closure and local diversion weekdays between 11 October until 22 October 2021 Daily between 9.30am until 3.30pm

You may notice some extra traffic on the roads and noise from the machinery. Our normal working hours alongside this work are between Monday to Friday 8.00am – 6.00pm, and Saturday 8.00 am– 1.00pm

What we will do

We will be working hard to ensure any impact on residents is kept to a minimum during these works.

Notice of Twin Oaks / Lower Thorpe building demolition and preparation of bat house update

www.hs2.org.uk

Notification



Demolition work

Our ecology surveys identified that local HS2 owned properties are used by bats as a roost site. These buildings will need to be demolished ahead of the construction of the railway and we will be constructing a new bat house to accommodate these bats.

The buildings due to be demolished are Lower Thorpe Farmhouse (grade II listed building) and Twin Oaks (historic building). Due to the heritage sensitivities of these structures all the work will be monitored and recorded by our archaeological contractor in line with the agreed scope of work with Historic England. We are additionally working with the local authority's Conservation Officer regarding the removal and salvage of the waterwheel within the waterwheel house.

Bat house construction

The new bat house design is currently under review by the local authority and will be constructed within a pre identified and segregated mitigation site.

Subject to final approvals construction will begin in September 2021 and be completed by winter 2021 (subject to consents)

Working hours

Our normal working hours are between
8:00am and 6:00pm Monday – Friday and
Saturday 8:00am – 1:00pm

There may be some intermittent ambient noise from the construction activity with a small number of work force on site.

Access and site welfare

Access to the buildings will be via the existing access driveway on Banbury Lane.

Access to the work site for bat house construction is via the internal access road directly from Banbury Lane.

The public right of way will remain open throughout construction.

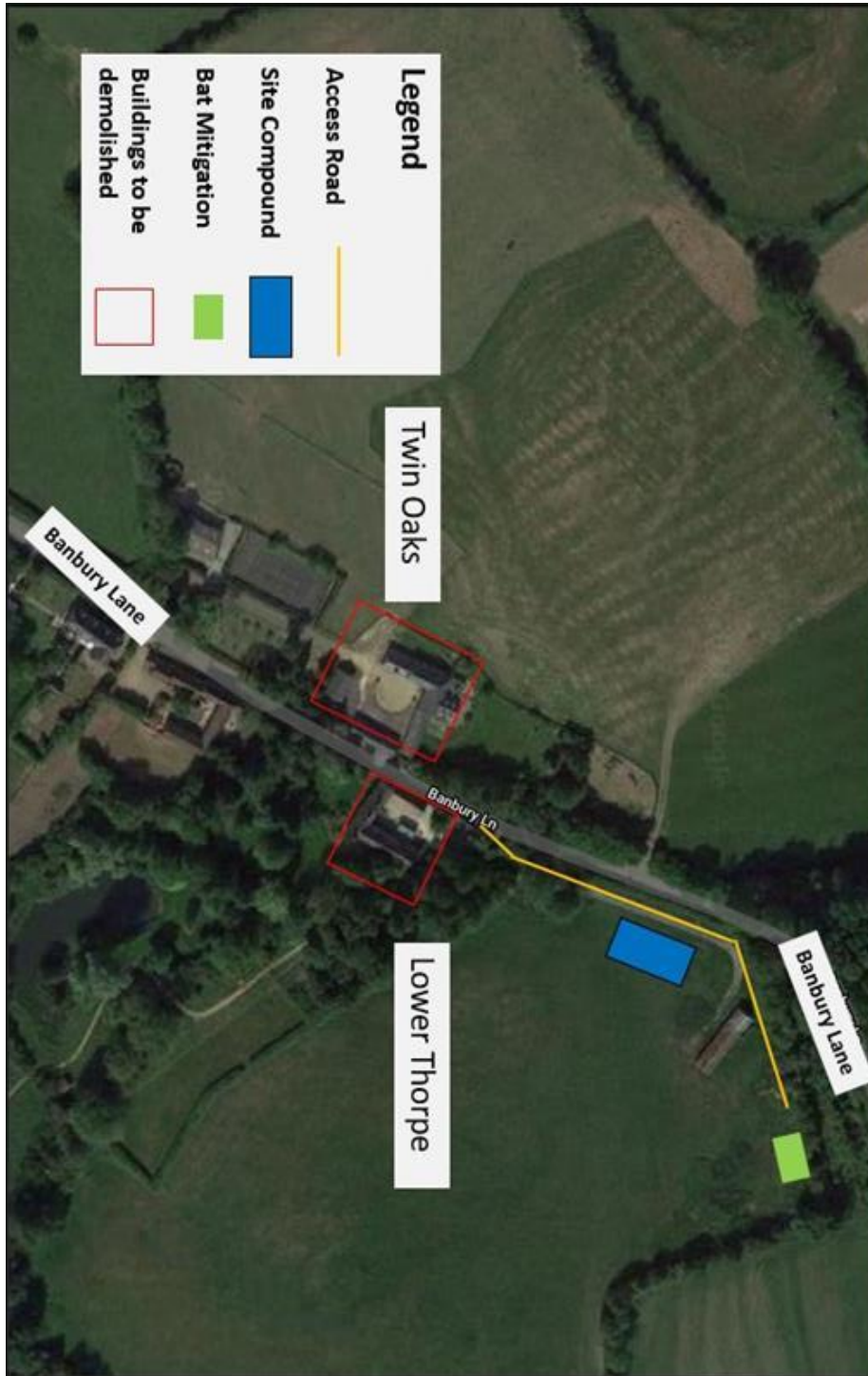
Please see attached map for details.

Notice of Twin Oaks / Lower Thorpe building demolition and preparation of bat house update

www.hs2.org.uk

Twin Oaks/Lower Thorpe worksite map

Notification



Contact our HS2 Helpdesk team on **08081 434 434**

Keeping you informed

We are committed to keeping you informed about work on HS2. This includes ensuring you know what to expect and when to expect it, as well as how we can help.

Residents' Charter and Commissioner

The Residents' Charter is our promise to communicate as clearly as we possibly can with people who live along or near the HS2 route.
www.gov.uk/government/publications/hs2-residents-charter

We also have an independent Residents' Commissioner whose job is to make sure we keep to the promises we make in the Charter and to keep it under constant review. Find reports at:
www.gov.uk/government/collections/hs2-ltd-residents-commissioner

You can contact the Commissioner at:
residentscommissioner@hs2.org.uk

Construction Commissioner

The Construction Commissioner's role is to mediate and monitor the way in which HS2 Ltd manages and responds to construction complaints. You can contact the Construction Commissioner by emailing:
complaints@hs2-cc.org.uk

Property and compensation

You can find out all about HS2 and properties along the line of route by visiting:
www.gov.uk/government/collections/hs2-property
Find out if you're eligible for compensation at:
www.gov.uk/claim-compensation-if-affected-by-hs2


Holding us to account

If you are unhappy for any reason you can make a complaint by contacting our HS2 Helpdesk team. For more details on our complaints process, please visit our website:
www.hs2.org.uk/how-to-complain

Contact Us

Contact our HS2 Helpdesk team all day, every day of the year on:

 Freephone **08081 434 434**

 Minicom **08081 456 472**

 Email **hs2enquiries@hs2.org.uk**

Write to:

FREEPOST

HS2 Community Engagement

Website **www.hs2.org.uk**

To keep up to date with what is happening in your local area, visit:
www.hs2inyourarea.co.uk

Please contact us if you'd like a free copy of this document in large print, Braille, audio or easy read. You can also contact us for help and information in a different language.

HS2 Ltd is committed to protecting personal information. If you wish to know more about how we use your personal information please see our Privacy Notice
<https://www.gov.uk/government/publications/high-speed-two-ltd-privacy-notice>

Reference number: FUS_AWN_0247 HS2-MW-Fusion -Ph1-Ar-Ce-C3-Traf-16-19/08/2021

Company registration number: 06791686. VAT registration number: 888 8512 56.