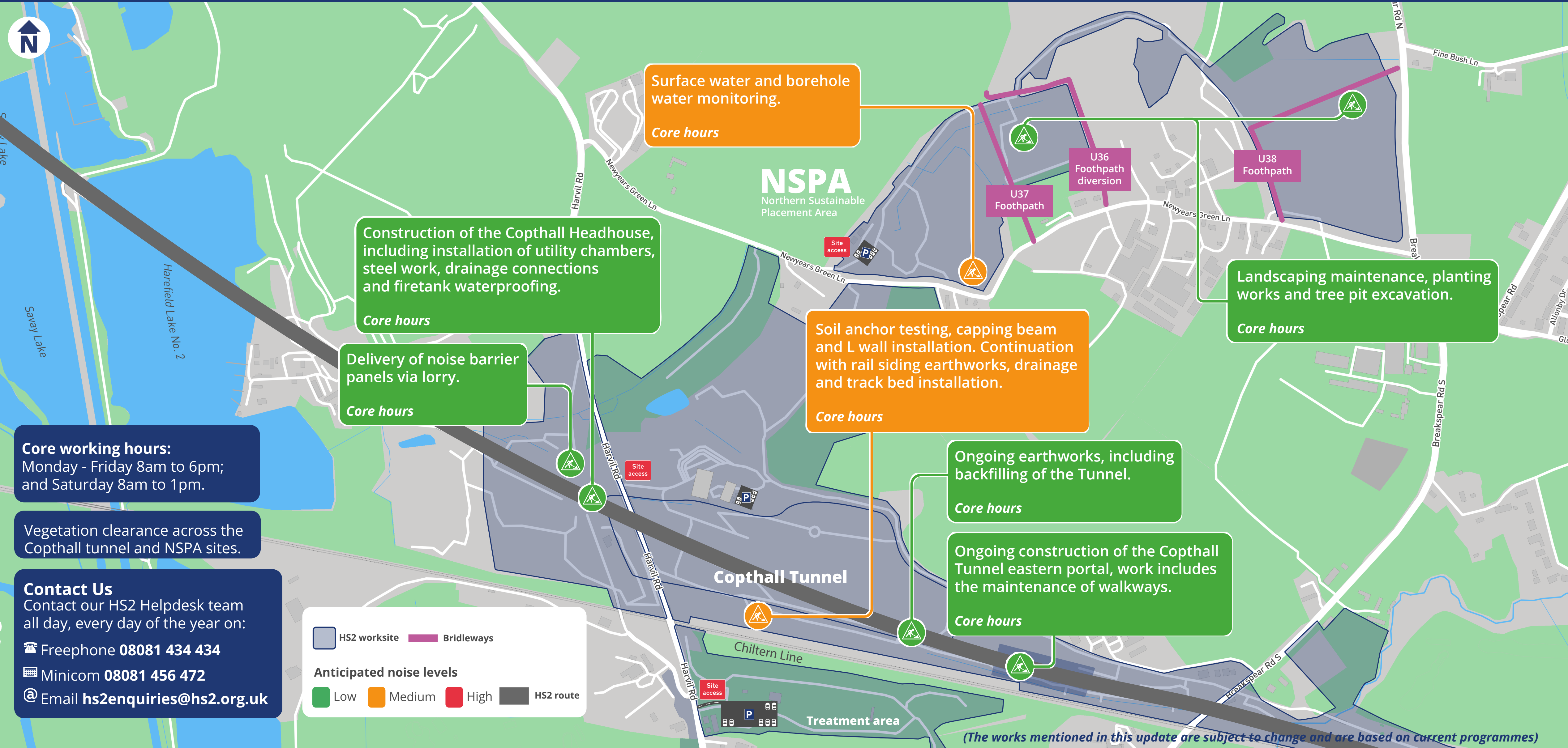


Copthall Tunnel and Northern Sustainable Placement Area works

Main site activities during the week commencing 20 April 2026



Working in partnership with



Surface water and borehole water monitoring.
Core hours

Construction of the Copthall Headhouse, including installation of utility chambers, steel work, drainage connections and firetank waterproofing.
Core hours

Delivery of noise barrier panels via lorry.
Core hours

Soil anchor testing, capping beam and L wall installation. Continuation with rail siding earthworks, drainage and track bed installation.
Core hours

Landscaping maintenance, planting works and tree pit excavation.
Core hours

Ongoing earthworks, including backfilling of the Tunnel.
Core hours

Ongoing construction of the Copthall Tunnel eastern portal, work includes the maintenance of walkways.
Core hours

Core working hours:
Monday - Friday 8am to 6pm;
and Saturday 8am to 1pm.

Vegetation clearance across the Copthall tunnel and NSPA sites.

Contact Us
Contact our HS2 Helpdesk team all day, every day of the year on:
 Freephone **08081 434 434**
 Minicom **08081 456 472**
 Email **hs2enquiries@hs2.org.uk**

HS2 worksite
 Bridleways

Anticipated noise levels

Low
 Medium
 High
 HS2 route

(The works mentioned in this update are subject to change and are based on current programmes)