

## Network Rail retaining wall works

February 2021 | [www.hs2.org.uk](http://www.hs2.org.uk)

High Speed Two (HS2) is the new high speed railway for Britain. Before excavations and tunnelling in the Euston Approaches, we are carrying out works to strengthen the ground behind the existing Network Rail retaining wall. These works include ground anchors in the retaining wall paired with earthworks at track level. Together this will ensure the wall can safely withstand the movement caused by HS2 works.

- Ground anchors are steel rods drilled through the wall, cemented into the earth behind and tightened from the track-side between Parkway and Granby Terrace
- A 'berm' is a supportive bank of earth and concrete built against the retaining wall at track-level.
- A large beam is added to the retaining wall to add support and strength to the ground anchors.

Anchors remain in the ground but will be de-tensioned once all movement from HS2 works has reduced sufficiently. Anchors are not visible and do not prevent building works in the area in future.

We are monitoring ground movement and will continue to do so during and after the works to ensure all movement is within safe levels.

### Ground anchors in Euston Approaches from Parkway to Granby Terrace

Together with supporting structures against the retaining wall, anchors add strength prior to works that will cause movement. Anchors are designed and installed to avoid underground structures such as basements, foundations and utilities.

The ground anchors in Euston Approaches are typically about 20-25m long, but may be up to 35m long in some cases.

To install the anchors, we drill a hole from track-side to pass through the retaining wall and several metres beneath the street and foundations of properties. We then insert a steel cable into the hole, followed by a coating of concrete to protect and strengthen it. Anchors are installed in sections and each anchor is completed within one shift to protect against settlement of the ground above.

Installing the anchors creates minimal vibration, which is unlikely to be felt at ground level.

## SCS FACTSHEET



- Anchors are being installed along the length of the Network Rail retaining wall from Parkway to Granby Terrace
- Anchors are up to 35 meters long and about 1-2 meters apart within land permitted through the High Speed Rail Act
- Anchor lengths, depths and spacings were confirmed following the results of test anchors at track level
- Anchors are carefully designed to avoid underground structures and services
- Anchors do not cause any meaningful changes in ground level – much less than caused by the changing seasons
- Track-level structures add support and stability and will use onsite spoil where possible to reduce the number of vehicle movements
- The trackside berm will be about 3m high and a minimum of 6m wide
- Six boreholes in the footpath or road to monitor ground water
- We are happy to provide properties above the anchors with more detail upon request

## What is a berm and ground beam?

A berm and ground beam combined with ground anchors provide adequate strength to the retaining wall during HS2 works.

The berm is a permanent structure made of earth and concrete. It is built against the retaining wall at track level to add support.

The berm will be separated from the track by a safety wall, and will be used as an onsite road. We will re-use excavated material from site where possible in the berm's construction to help reduce the number of lorries removing spoil and making deliveries to and from our site.

The ground beam is a concrete support that forms part of the berm where there will be tunnels underneath.

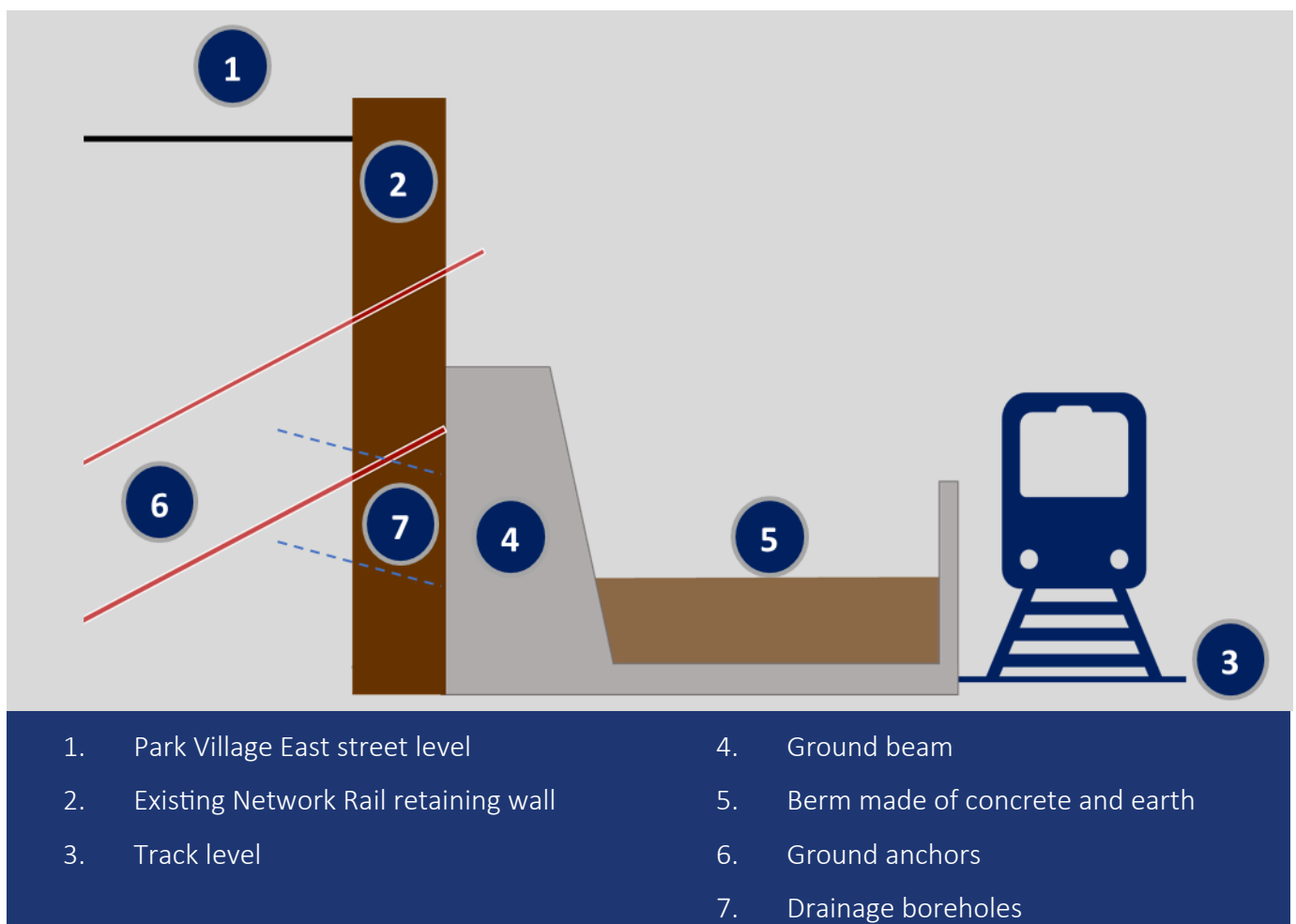
The berm and ground beam will be visible from the trackside so we will ensure their appearance is similar to the railway cutting's surroundings.

## Additional drainage

When ground gets wet, it gets heavier. We are improving the drainage of the earth behind the Network Rail retaining wall by inserting short drainage pipes to let any excess water escape. This water will be channeled away via existing drainage systems.

To help monitor water levels in the ground behind the wall, a small number of holes are required on Park Village East for monitoring equipment. These will be covered.

## Network Rail retaining wall works—indicative layout



# Keeping you informed

We are committed to keeping you informed about work on HS2. This includes ensuring you know what to expect and when to expect it, as well as how we can help.

## Residents' Charter and Commissioner

The Residents' Charter is our promise to communicate as clearly as we possibly can with people who live along or near the HS2 route.

[www.gov.uk/government/publications/hs2-residents-charter](http://www.gov.uk/government/publications/hs2-residents-charter)

We also have an independent Residents'

Commissioner whose job is to make sure we keep to the promises we make in the Charter and to keep it under constant review. Find reports at:

[www.gov.uk/government/collections/hs2-ltd-residents-commissioner](http://www.gov.uk/government/collections/hs2-ltd-residents-commissioner)

You can contact the Commissioner at:  
[residentscommissioner@hs2.org.uk](mailto:residentscommissioner@hs2.org.uk)

## Construction Commissioner

The Construction Commissioner's role is to mediate and monitor the way in which HS2 Ltd manages and responds to construction complaints. You can contact the Construction Commissioner by emailing:  
[complaints@hs2-cc.org.uk](mailto:complaints@hs2-cc.org.uk)

## Property and compensation

You can find out all about HS2 and properties along the line of route by visiting:

[www.gov.uk/government/collections/hs2-property](http://www.gov.uk/government/collections/hs2-property)

Find out if you're eligible for compensation at:

[www.gov.uk/claim-compensation-if-affected-by-hs2](http://www.gov.uk/claim-compensation-if-affected-by-hs2)

## Holding us to account

If you are unhappy for any reason you can make a complaint by contacting our HS2 Helpdesk team. For more details on our complaints process, please visit our website:

[www.hs2.org.uk/how-to-complain](http://www.hs2.org.uk/how-to-complain)

HS2-EW-SCS-Ph1-Ca-S1-Prog-works-12-17/02/2021

## Somali

Fadlan nala soo xiriir haddii bug-yarahaan bilaashka ah ku rabtid daabacad far waa-wayn, qoraalka indhoolaha, hab maqal ah ama si fudud loo akhrin karo. Waxaan xittaa macluumaadka ku bixin karnaa luqado kala duwan. Qof ayaad ka codsan kartaa inuu wakiil ka noqdo markaad la hadlayso HS2 Ltd.

## Español

Póngase en contacto con nosotros en caso de que desee recibir una copia gratuita de este folleto en caracteres grandes, braille, audio o en formato de lectura fácil. También podemos proporcionar la información en distintos idiomas. No dude en pedirle a alguien que le represente en cualquier conversación con HS2, Ltd.

## Français

Merci de nous contacter si vous désirez une copie de cette brochure en grands caractères, en braille, en version audio, ou en lecture simplifiée. Nous pouvons également vous fournir des informations dans différentes langues. Vous pouvez demander d'être représenté(e) par un tiers pour tout échange avec HS2 Ltd.


## Bengali

যদি আপনাকে এই প্রচারপত্রটির বড় অক্ষর, ব্রাইল, অডিও বা সহজ পাঠযোগ্য বৈশিষ্ট্যের প্রতিলিপির প্রয়োজন হয় তবে আমাদের সাথে যোগাযোগ করে আমাদের সার্বিক প্রতিকারের ব্যবস্থা করতে পারবেন। এইচএস২ লিমিটেড (HS2 Ltd.)-এর সার্বিক প্রতিকারের আবেদনটি আপনাকে প্রতিকারের জন্য আপনাকে কাউন্সিল জিজ্ঞাসা করায় আপনাকে সর্বাঙ্গীণ জাতি।

## Contact Us

Contact our HS2 Helpdesk team all day, every day of the year on:

 Freephone **08081 434 434**

 Minicom **08081 456 472**

 Email **HS2enquiries@hs2.org.uk**

Write to:

**FREEPOST**

**HS2 Community Engagement**

Visit us at the former National Temperance Hospital at **112 Hampstead Road, London NW1 2PS.**

Websites: **www.hs2.org.uk**  
**www.hs2inCamden.co.uk**

**Please contact us if you'd like a free copy of this document in large print, Braille, audio or easy read. You can also contact us for help and information in a different language.**

HS2 Ltd is committed to protecting personal information. If you wish to know more about how we use your personal information please see our Privacy Notice <https://www.gov.uk/government/publications/high-speed-two-ltd-privacy-notice>

High Speed Two (HS2) Limited, registered in England and Wales. Registered office: Two Snowhill, Snow Hill Queensway, Birmingham B4 6GA. Company registration number: 06791686. VAT registration number: 181 4312 30.