



Notice of overnight road closures for the resurfacing of Moorfield Road, Denham

August 2021 | www.hs2.org.uk

High Speed Two (HS2) is the new high speed railway for Britain. We are continually reviewing the works on our construction sites in line with Government and Public Health England (PHE) advice on dealing with COVID-19. All sites will remain under constant review. Following the lifting of restrictions, we will once again be having face-to-face engagement events and meetings which will be publicized on local community websites. You can sign up for regular updates in your local area at www.hs2inbucksandbox.co.uk

Why are we doing these works?

To safely carry out repair work to Moorfield Road in Denham we need to close the road overnight in two phases. During the road closures access will be maintained for residents and emergency services. All other traffic will be diverted away from Moorfield Road. Please see the diversion map overleaf.

What will we be doing?

The first phase of resurfacing will take place from Monday 16th August to Saturday 21st August 2021. We will close the road from 9pm to 5am overnight whilst we strip and resurface the damaged road. We will return from Monday 13 September 2021 to Thursday 16 September 2021 to install anti-skid surfaces and traffic sensors. We will close the road from 9pm to 5am every night.

During both phases of work the road will be opened daily between 6am and 9pm. Advanced diversion notices will be in place two weeks prior and a signed diversion route will be created for motorists travelling between Harefield and Denham during the road closures.

Public Rights of Way will be maintained wherever possible, and access for residents and businesses will be managed by on site staff with signage and traffic marshalling for pedestrians. Traffic will be diverted between Denham to Harefield via Harvil Road, Swakeleys Road, High Road / Ickenham Road, Ducks Hill Road, Denham Avenue/Orbital Way.

If you have a question about HS2 or our works, please contact our HS2 Helpdesk team on 08081 434 434 or email hs2enquiries@hs2.org.uk

Duration of works

Phase 1

Monday 16th to Saturday 21st August 2021

Phase 2

Monday 13th September to Thursday 16th September 2021

Hours of work

9pm to 5am (road will reopen at 6am each morning)

What to expect

Traffic diversion and management

Managed access for residents on Moorfield Road

Noise from road resurfacing equipment during night works.

What we will do

We will manage environmental impacts such as traffic and noise during works.

Moorfield Road overnight closures and diversion

www.hs2.org.uk



Figure 1: Map of road closure location and diversion route

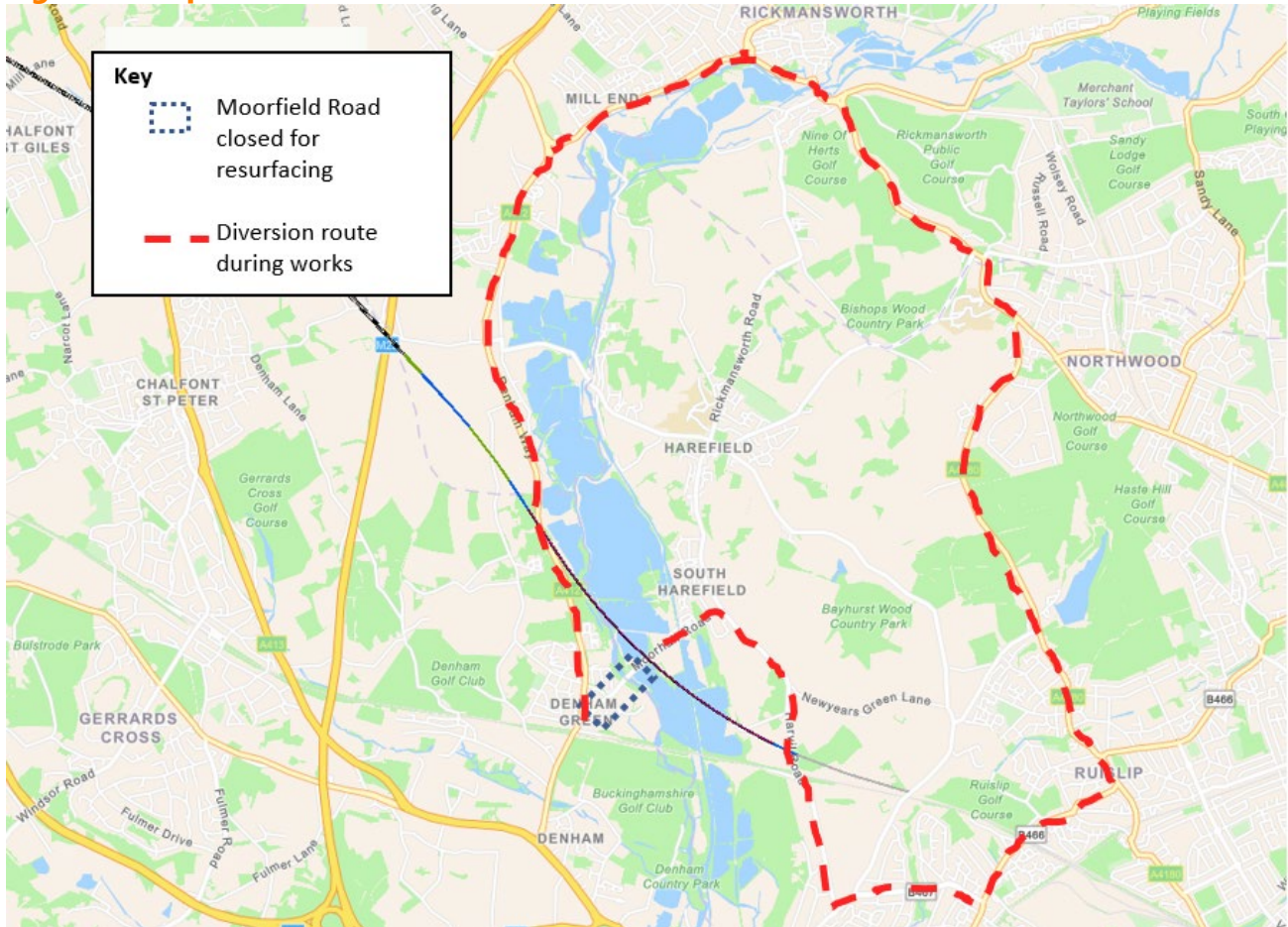
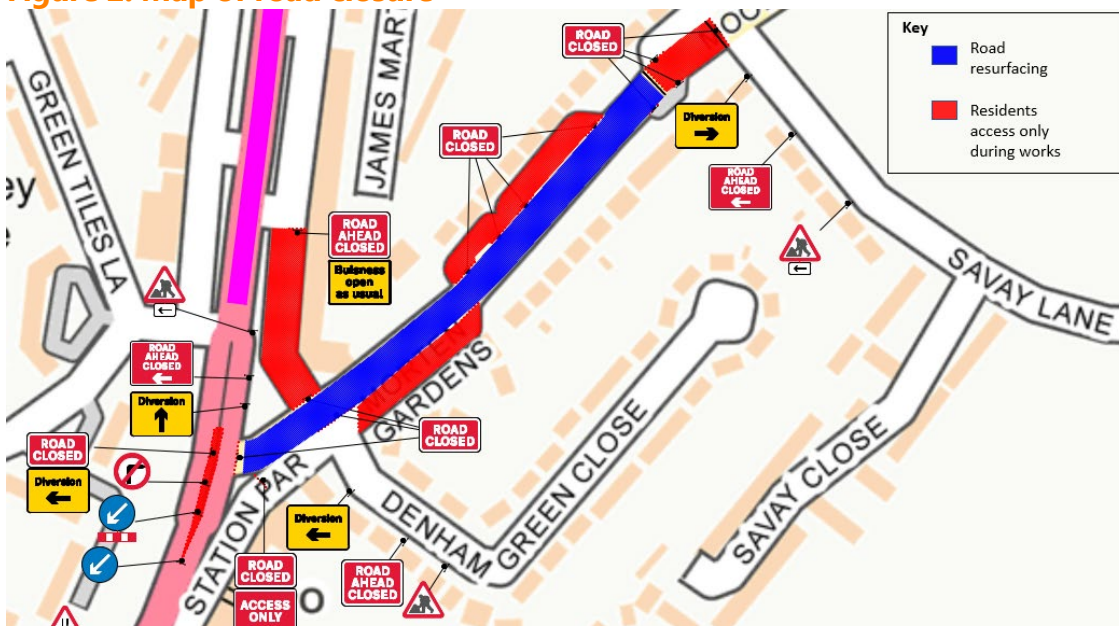


Figure 2: Map of road closure



Contact our HS2 Helpdesk team on **08081 434 434**

What else is happening in your area?

www.hs2.org.uk

Contact our new HS2 Helpdesk team

Our team is here to listen and respond to your enquiry, complaint or feedback to help us be a good neighbour.

You can contact our Helpdesk team all day, every day of the year on:

Freephone: **08081 434 434**

Minicom: **08081 456 472**

Email: hs2enquiries@hs2.org.uk

Keep up to date with your local community website

To find out more about what's happening in your area and receive regular email updates, you can sign up to our local community websites at: www.hs2inyourarea.co.uk.

About our Community and Business Funds

We are offering two funds that are available to local communities and businesses between the West Midlands and London, to help with the disruption caused by our construction work. These are the Community and Environment Fund (CEF) and the Business and Local Economy Fund (BLEF).

The CEF is designed to give communities the opportunity to share in the benefits of HS2. It is an allocated fund that communities are able to apply for, to help to support local projects that aim to improve their local area.

The BLEF is designed to support local economies that may be disrupted by the construction of HS2. BLEF grants are for local business support organisations and local authorities to help maintain business activity in local communities.

For more information about each of these funds, including how to apply, please visit: <https://www.groundwork.org.uk/hs2funds>



Keeping you informed

We are committed to keeping you informed about work on HS2. This includes letting you know what to expect and when to expect it, as well as how we can help.

Residents' Charter and Commissioner

The Residents' Charter is our promise to communicate as clearly as we possibly can with people who live along or near the HS2 route.

www.gov.uk/government/publications/hs2-residents-charter

We also have an independent Residents' Commissioner whose job is to make sure we keep to the promises we make in the Charter and to keep it under constant review. Find reports at: www.gov.uk/government/collections/hs2-ltd-residents-commissioner

You can contact the Commissioner at: residentscommissioner@hs2.org.uk

Construction Commissioner

The Construction Commissioner's role is to mediate and monitor the way in which HS2 Ltd manages and responds to construction complaints. You can contact the Construction Commissioner by emailing: complaints@hs2-cc.org.uk

Property and compensation

You can find out all about HS2 and properties along the line of route by visiting:

www.gov.uk/government/collections/hs2-property

Find out if you're eligible for compensation at:

www.gov.uk/claim-compensation-if-affected-by-hs2

Holding us to account

If you are unhappy for any reason you can make a complaint by contacting our HS2 Helpdesk team. For more details on our complaints process, please visit our website:

www.hs2.org.uk/how-to-complain

Contact Us

Contact our HS2 Helpdesk team all day, every day of the year on:

 Freephone **08081 434 434**

 Minicom **08081 456 472**

 Email **hs2enquiries@hs2.org.uk**

Write to:

FREEPOST

HS2 Community Engagement

Website **www.hs2.org.uk**

To keep up to date with what is happening in your local area, visit: **www.hs2inbucksandox.co.uk**

Please contact us if you'd like a free copy of this document in large print, Braille, audio or easy read. You can also contact us for help and information in a different language.

HS2 Ltd is committed to protecting personal information. If you wish to know more about how we use your personal information please see our Privacy Notice

<https://www.gov.uk/government/publications/high-speed-two-ltd-privacy-notice>

Reference number: HS2-EW-Align-Ph1-Ar-Ce-C2-Traf-5-19/08/2021

High Speed Two (HS2) Limited, registered in England and Wales.

Registered office: Two Snowhill, Snow Hill Queensway, Birmingham B4 6GA.

Company registration number: 06791686. VAT registration number: 888 8512 56.