

Contact our HS2 Helpdesk team on **08081 434 434**

HS2 Update

Wormleighton to Southam area | August 2021

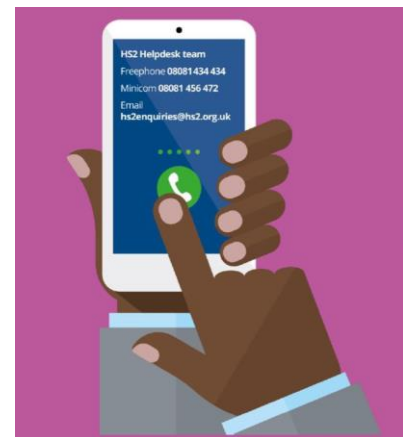
High Speed Two (HS2) is the new high speed railway for Britain. In response to COVID -19 we have worked hard to ensure that our working practices are fully aligned with the Site Operating Procedures produced by the Construction Leadership Council. These procedures have been endorsed by Public Health England. Our local website, www.hs2inwarwickshire.co.uk, will be kept up to date with information on our works in the local area.

Update on our continuing works

Our activity in the area from Wormleighton to Southam is well under way. Between Wormleighton and Ladbroke, we will soon start on the construction of our site access roads and main earthworks. We have now constructed the entrance junction to our compound on the A423 Banbury Road and have started to construct our compound buildings.

Over the summer and autumn, our activity will increase. You can expect to see the following works in the local area:

- Ground investigations, utility and trial hole works as well as land surveying;
- Construction of the office and welfare facilities at the A423 Southam construction compound;
- Further clearance of vegetation and fencing work;
- Construction of access and haul roads to move people and materials along the line of the new railway, rather than on local roads;
- Construction of a plant crossing area where our access road meets the B4451 Kineton Road;
- Excavation, movement and storage of earthworks near Wormleighton, Ladbroke and Southam;
- Temporary footpath closures and diversions near the Southam compound and Ladbroke Hill Lane area.



Join us online...

Virtual one-to-one engagement event

September 2021

Sign up for our next virtual one-to-one engagement session via the HS2 events page.

You can book a meeting with our engagement team, who are available to answer your questions about the HS2 works in your area. During these sessions we can also provide more information about community funding and job opportunities.

www.hs2.org.uk/events

Update on works

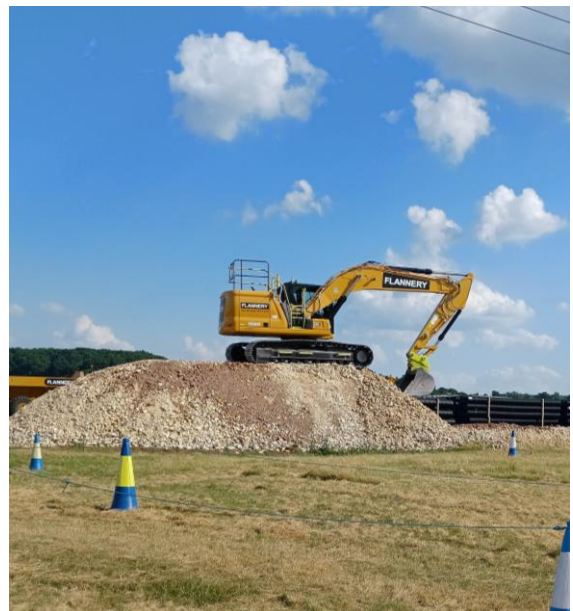
Southam compound

The construction of the Southam compound on the A423 Banbury Road is progressing well. We have installed temporary office and welfare facilities for our staff and as the site develops, more facilities will be installed to accommodate our increasing staff numbers. At the rear of the compound, we are creating plant and equipment storage areas, as well as areas to store materials that are required to build our internal construction roads.

In July, we completed the entrance junction to the compound, known as a 'break from highway.' This involved installing curb stones and resurfacing the road at the entry point. The construction of an exit junction and plant crossing area are due to start at the beginning of September. This may require some lane closures and temporary traffic lights.

Road construction

We will create temporary roads to provide access for people and materials along the line of the new railway, helping to keep construction vehicles off local roads. Plant crossing areas are being constructed, where our access roads meet the local road network. These crossings use traffic lights and barriers to provide safety to both public road users and our construction staff. In late August and September 2021, we will be building plant crossing areas on Kineton Road, A423 Banbury Road, Ladbroke Hill Lane and Wormleighton Road. We will provide further updates to explain traffic management arrangements once they are finalised. Details about this will be on our website, www.hs2inwarwickshire.co.uk.



Roads and Public Rights of Way closures and diversions

We are working hard to minimise our impact on the local public rights of way network. We have kept several footpaths open for as long as possible while our construction has started on nearby sites. However, we will soon need to close or divert some of the public rights of way that cross the HS2 line.

In late August 2021, we will close a section of footpath SM33, which is the footpath that crosses the HS2 rail line between Ladbroke and Southam. We will also close a section of the footpath that crosses the south section of the Southam compound towards Ladbroke. The paths will remain closed for the duration of our construction works. When our Banbury Road overbridge is constructed, Footpath SM33 will be permanently redirected over the bridge.

We will soon start earthworks near Ladbroke Hill Lane. The Harry Green Way, which is footpath SM90, will be closed in the area where it crosses our construction area north of Ladbroke Hill Lane. We are finalising the details of this closure and will publish more information about this on our website, www.hs2inwarwickshire.co.uk.

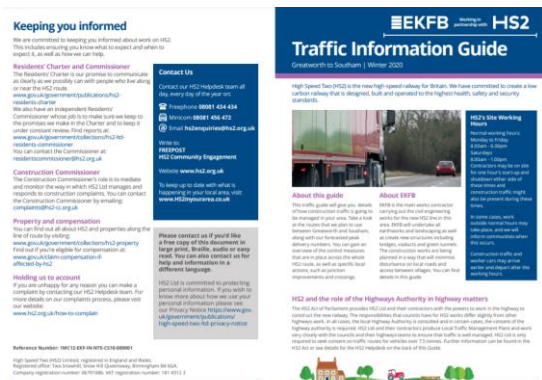
Demolitions

Demolition work is taking place near the A423 Banbury Road at the former Willow Car Sales, Greenleaf Nursery and at Harps Farm. The modern processes used to demolish the buildings will minimise the impact of dust and noise. Further demolition activity will continue throughout the summer and local residents, as well as the local parish councils, have been kept regularly updated.

Earthworks

We are now stepping up our earthwork activity and in August we will be removing topsoil from areas where the railway line is to be constructed. Topsoil will be stored in low earth bunds near the perimeter of our construction areas. These earth mounds help to provide a visual screen from our construction activity and allow the topsoil to be stored in a healthy condition. The soil will be returned to the land when our construction nears completion.

Remember to visit our community webpages to view or download a copy of our traffic information guide for Warwickshire,
www.HS2inwarwickshire.co.uk



Above is the example layout of the traffic guide. We recommend printing in A3 for best quality.

If you have a question about HS2 or our works, please contact our HS2 Helpdesk team on 08081 434 434 or email hs2enquiries@hs2.org.uk

Keep up to date with our works

We're moving your local website within the HS2 website

This summer we will be moving the contents of [HS2inwarwickshire.co.uk](https://www.hs2inwarwickshire.co.uk) over to the 'In your area' section of the main HS2 website [HS2.org.uk/in-your-area](https://www.hs2.org.uk/in-your-area). We are also changing the way that we issue email updates about the project and giving you more choice about how you would like to receive information from us.

We have published local community landing pages for each section of the route between London, the West Midlands and Crewe. These provide information about HS2 within each area. Over the coming weeks we will be adding further pages and information to each area. We are aiming to complete this exercise in July this year.

You can continue visiting [HS2inwarwickshire.co.uk](https://www.hs2inwarwickshire.co.uk) for all information about our works in your area.

We're asking you to sign up for notifications to continue to receive updates from HS2

As part of the move, we will stop issuing email updates via Commonplace. We will continue to produce regular email updates about the project, including notifications of our upcoming works, how it's being constructed and what we're doing to make it less disruptive. If you are signed up to receive updates from us or would like to, we are asking that you sign up to receive information from HS2 directly.

If you would like to continue to receive updates from HS2 you can sign up for email notifications at [engagement.hs2.org.uk/join-mailing-list](https://www.engagement.hs2.org.uk/join-mailing-list).

Frequently Asked Questions

Some of our most commonly asked questions in your area

Q: How are you protecting birds during nesting season?

A: Before any work close to trees or vegetation is undertaken, an ecologist attends the site and carries out a detailed survey to ensure no bats, birds or nests are present. If any wildlife or nests are discovered, the tree is left alone until the bird leaves the nest, and a boundary is put in place to ensure they are not disturbed.

Q: Are you tracking your HGVs to ensure they follow approved routes?

A: We have a vehicle management system in place to ensure we can track all regular vehicles and hauliers delivering to our sites. We can monitor the routes taken, reroute vehicles where necessary, and reject any vehicles who do not comply with our strict criteria.

Q: How are you managing dust at your work sites?

A: We are using dust suppression systems at our sites. We spray down work areas, haul routes and plant using water bowsers to prevent dust from becoming airborne. We also use dust monitoring techniques to ensure we can monitor air quality levels close to our work sites.

Community Investment

We have been active in getting to know the local communities. We have participated in local charity walks, Dementia Friends training, donated items for local foodbanks and have even held fundraising days to raise money.

Recently, we have been in communication with a local football club. Football is one of the leading sports for children and is often found to be at the heart of local communities. We at EKFB are excited to be collaborating with coaches from Southam United Football Club and look forward to creating a positive and meaningful affiliation.

We are keen to support with volunteering and fundraising work for local charities and organisations. If you would like to know more then please contact the HS2 Helpdesk.



HS2 funds for the community

There are two funds which are available to local communities to help with disruption that will be caused by the construction of Phase one of HS2 – **The Community and Environmental Fund (CEF)** and the **Business and Local Economy Fund (BLEF)**.

Community and business groups along the HS2 route have been awarded over £9.6 million for projects since the funds began running in March 2017. So far in the area, HS2 has provided funding to Byfield Parish Council to upgrade Brightwell Pavilion in Northamptonshire. Already a base for sports clubs, this upgrade will allow the Brightwell Pavilion to expand, creating an opportunity to invite new members and for new sports clubs to be formed. Additionally, it will also become a space for children’s parties, coffee mornings and charity events, creating a place for people to meet and socialise for different occasions.



Keeping you informed

We are committed to keeping you informed about work on HS2. This includes ensuring you know what to expect and when to expect it, as well as how we can help.

Residents' Charter and Commissioner

The Residents' Charter is our promise to communicate as clearly as we possibly can with people who live along or near the HS2 route.

www.gov.uk/government/publications/hs2-residents-charter

We also have an independent Residents' Commissioner whose job is to make sure we keep to the promises we make in the Charter and to keep it under constant review. Find reports at:

www.gov.uk/government/collections/hs2-ltd-residents-commissioner

You can contact the Commissioner at:
residentscommissioner@hs2.org.uk

Construction Commissioner

The Construction Commissioner's role is to mediate and monitor the way in which HS2 Ltd manages and responds to construction complaints. You can contact the Construction Commissioner by emailing:
complaints@hs2-cc.org.uk

Property and compensation

You can find out all about HS2 and properties along the line of route by visiting:

www.gov.uk/government/collections/hs2-property

Find out if you're eligible for compensation at:

www.gov.uk/claim-compensation-if-affected-by-hs2

Holding us to account


If you are unhappy for any reason you can make a complaint by contacting our HS2 Helpdesk team. For more details on our complaints process, please visit our website:

www.hs2.org.uk/how-to-complain

Contact Us

Contact our HS2 Helpdesk team all day, every day of the year on:

 Freephone **08081 434 434**

 Minicom **08081 456 472**

 Email **HS2enquiries@hs2.org.uk**

Write to:

FREEPOST

HS2 Community Engagement

Website www.hs2.org.uk

To keep up to date with what is happening in your local area, visit:
www.HS2inyourarea.co.uk

Please contact us if you'd like a free copy of this document in large print, Braille, audio or easy read. You can also contact us for help and information in a different language.

HS2 Ltd is committed to protecting personal information. If you wish to know more about how we use your personal information please see our Privacy Notice
<https://www.gov.uk/government/publications/high-speed-two-ltd-privacy-notice>

Reference numbers: HS2-MW-EK-Ph1-Ar-Ce-C3-CR-34-21/07/2021

High Speed Two (HS2) Limited, registered in England and Wales.

Registered office: Two Snowhill, Snow Hill Queensway, Birmingham B4 6GA.

Company registration number: 06791686. VAT registration number: 888 8512 56