

SKANSKA



STRABAG

Working in  
partnership with

HS2

---

# Euston Approaches Design Update

29 & 30 March 2022

# Areas within the Euston Approaches

Skanska Costain STRABAG (SCS) is the HS2 main works contractor responsible for building the section of HS2 between Parkway and Hampstead Road.

This area is known as the Euston Approaches.

We have divided the Euston Approaches worksite into three areas to help us communicate which works are closest and most relevant to you.

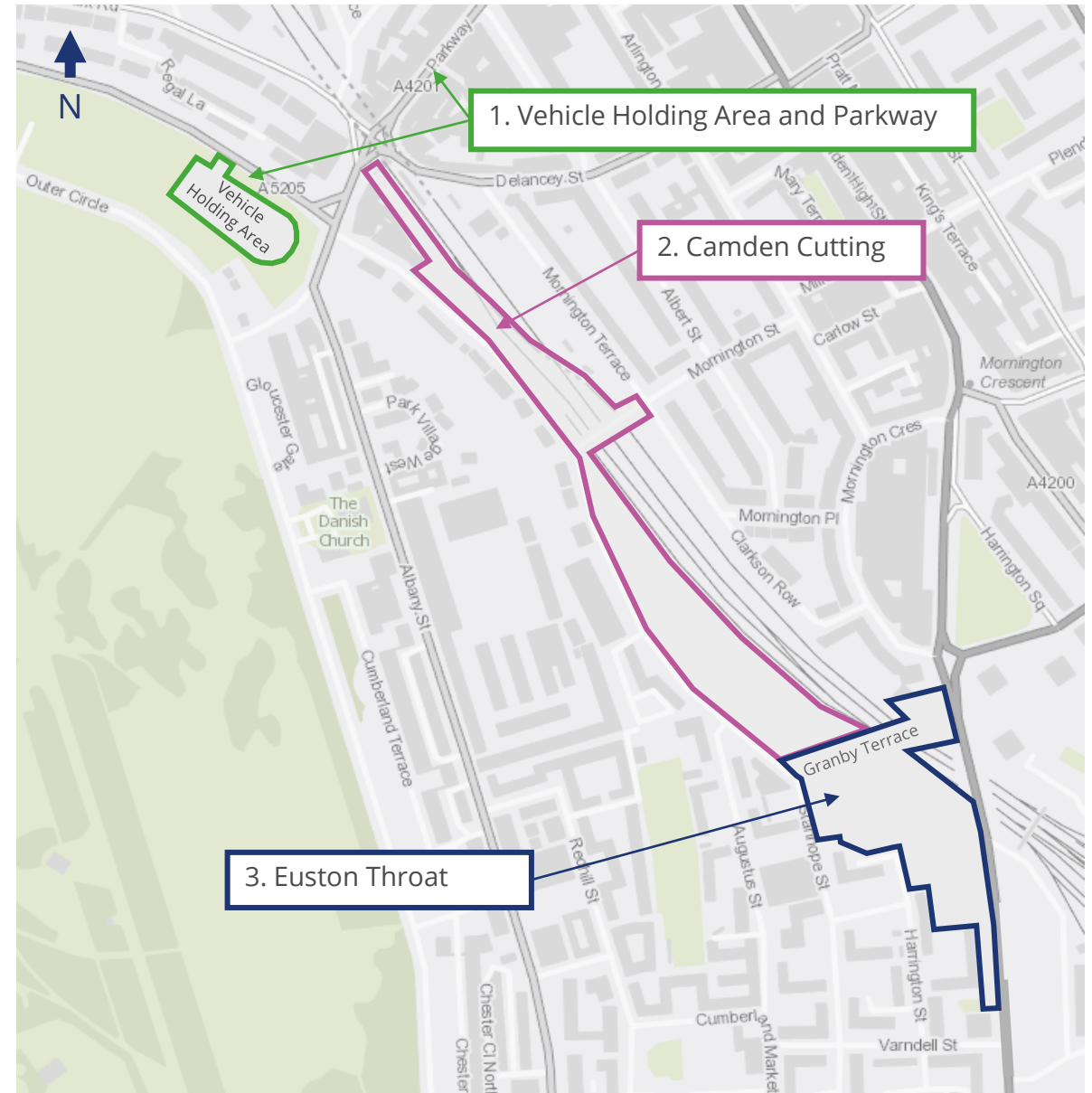
## 1. Vehicle Holding Area and Parkway

## 2. Camden Cutting - between Parkway and Granby Terrace bridge

- Camden Cutting north
- Mornington Street bridge
- Camden Cutting south

## 3. Euston Throat - Granby Terrace to Hampstead Road

- Granby Terrace bridge
- Euston Throat main site
- Hampstead Road bridge



# Planned engagement in Euston Approaches

We host regular pop-up sessions both online and in-person to meet with local community members and answer questions or talk about our works

Please join us at any of the sessions below

## 1. Weekly pop-up - various locations

Pop-ups every Wednesday on streets surrounding Camden Cutting and Euston Throat worksites from 3pm to 4.30pm

## 2. Fortnightly pop-up - various locations

Pop-ups every first and third Monday of the month, on streets surrounding Camden Cutting and Euston Throat worksites from 9am to 10.30am

## 3. Monthly virtual pop-up

Starting in April, we will host an online pop-up on the last Thursday of the month from 5pm to 6pm. Register at [HS2.org.uk/events](https://www.hs2.org.uk/events)

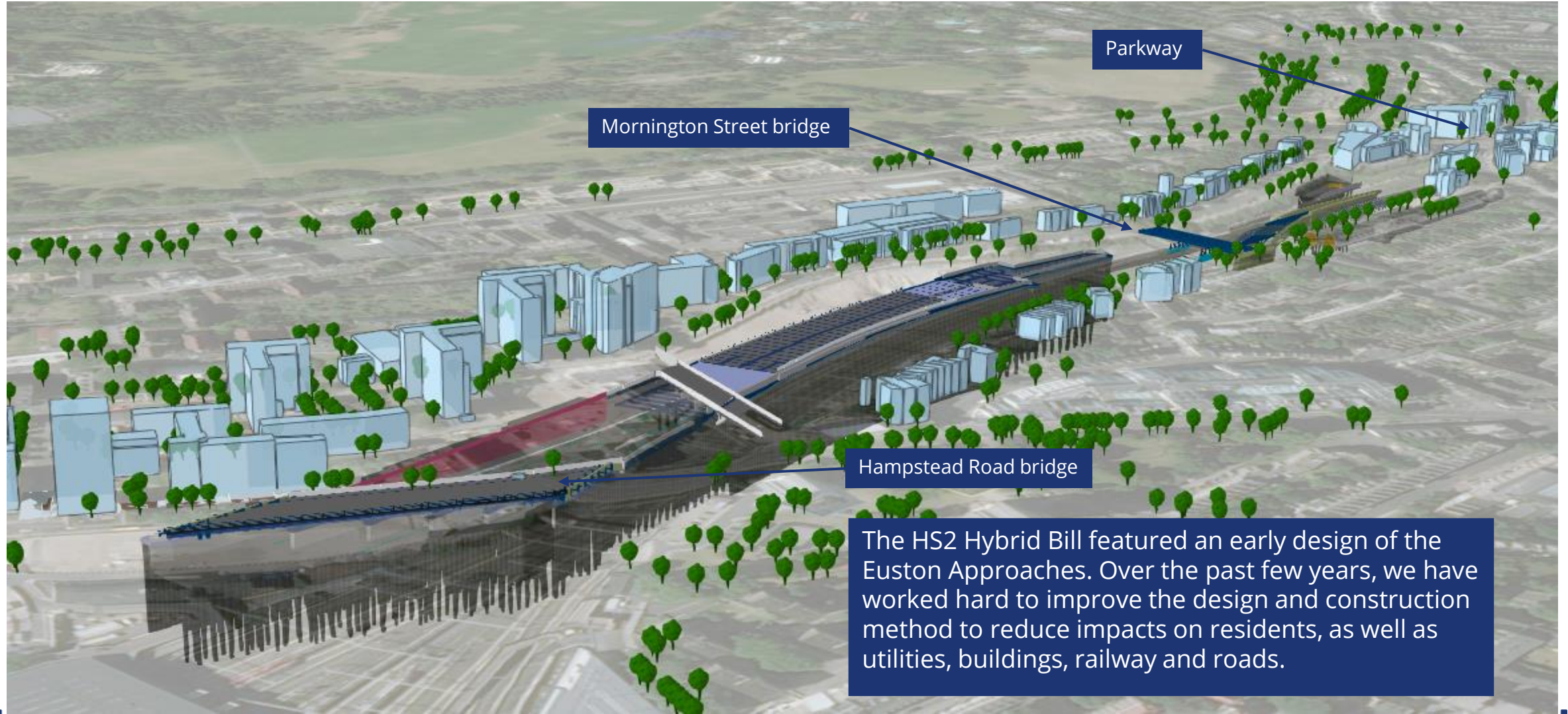


# Euston Approaches design update

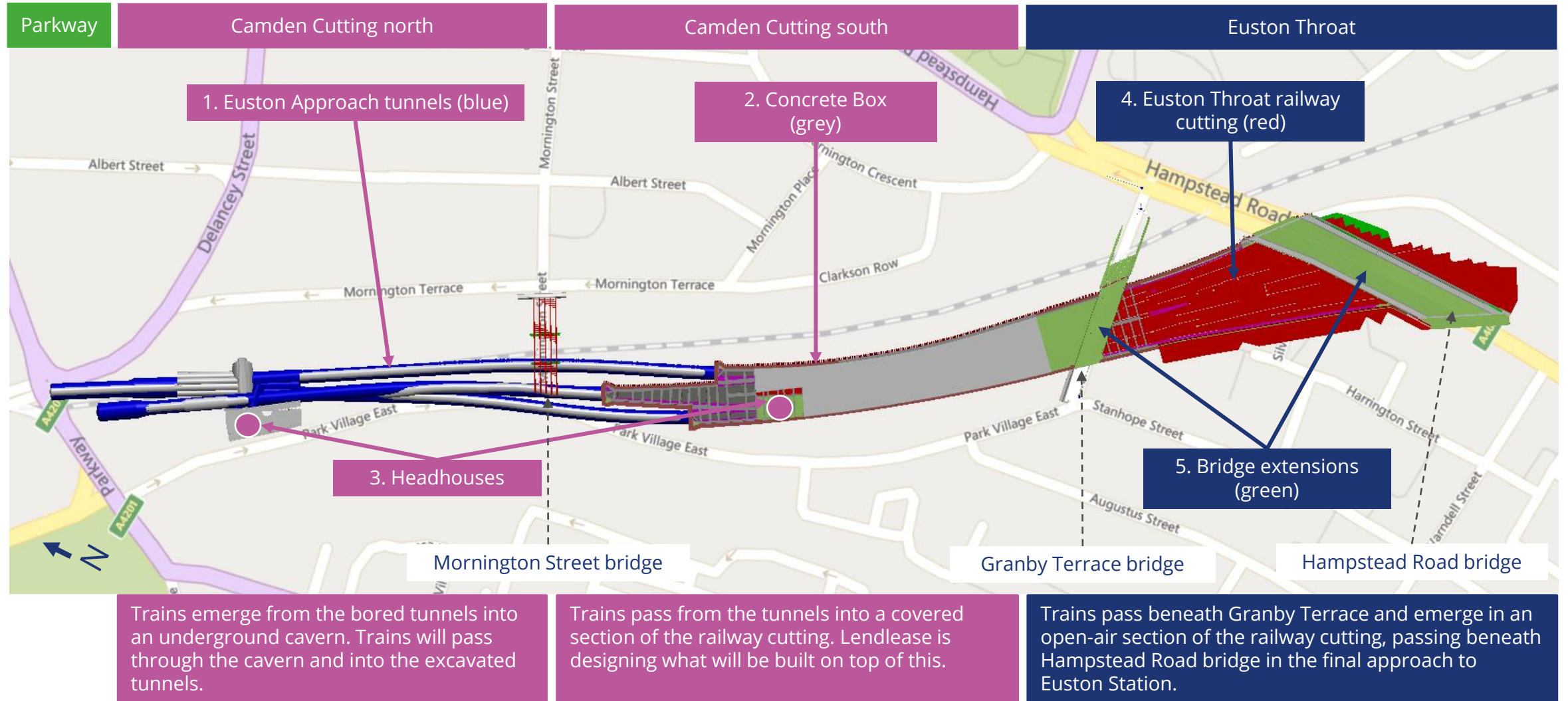




# Euston Approaches



# Structures within Euston Approaches





# 1. Euston Approach tunnels

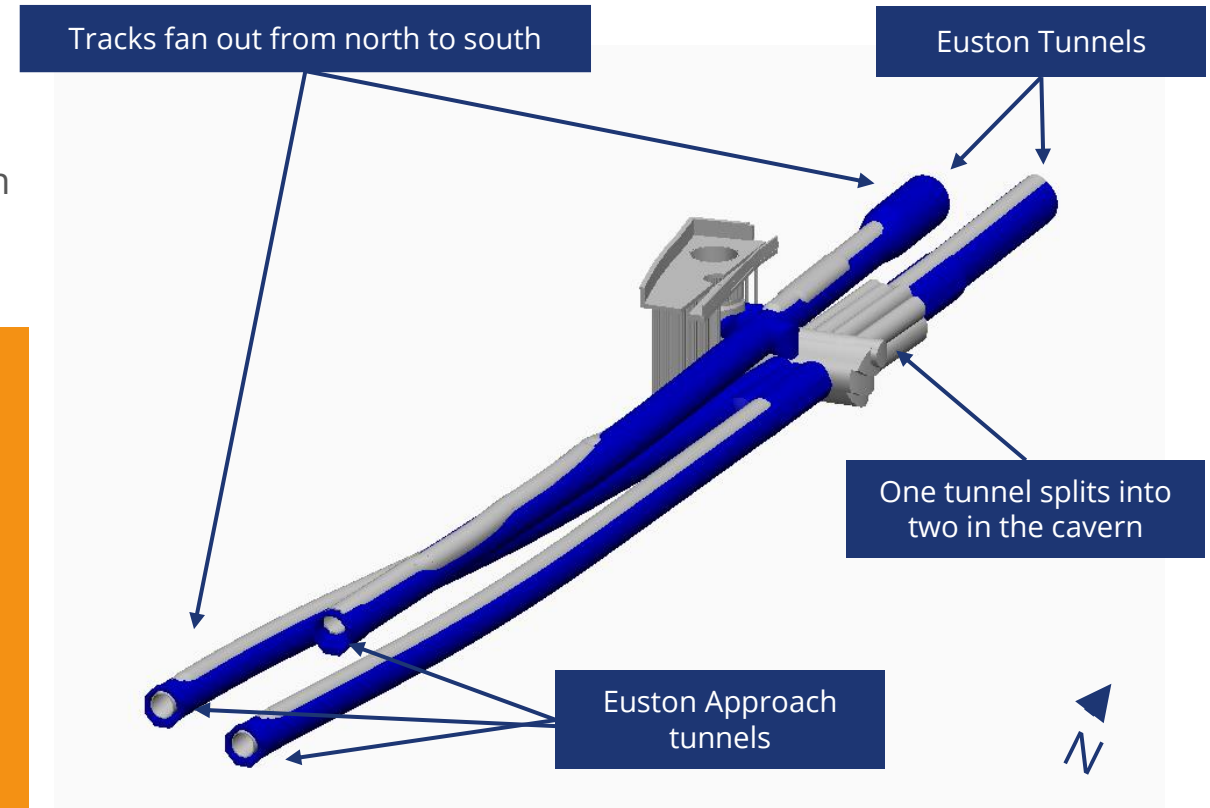
Starting in 2023, we will excavate three tunnels between Parkway and just south of Mornington Street bridge.

- Two tunnels used by trains travelling from Birmingham to London
- One tunnel used by trains travelling from London to Birmingham

## Why three tunnels?

The tracks in the Euston Approaches will fan out from north to south and cross over to enable trains to access and exit multiple platforms.

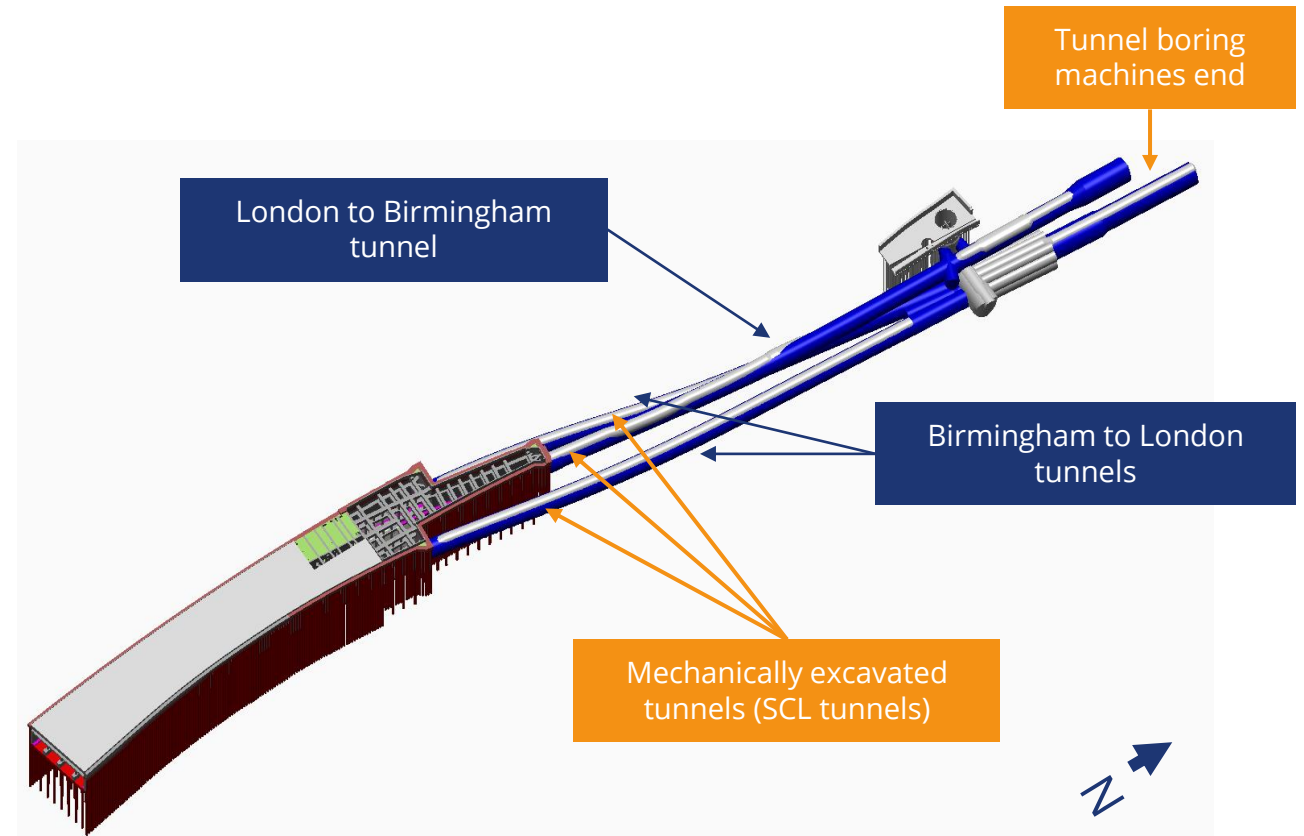
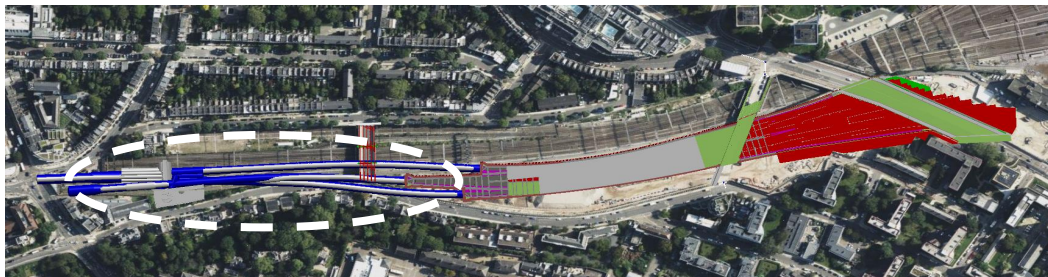
- Two HS2 tunnels, built in neighbouring section extend to just south of Parkway
- One of these tunnels splits into two between Parkway and Mornington Street bridge
- The other tunnel doesn't split (fan out) until south of Mornington Street



# 1a. Euston Approach tunnels

## Constructing the Euston Approach Tunnels

- We are not using a tunnel-boring machine to construct the Euston Approach tunnels
- We will excavate the three tunnels using sprayed concrete lining method (SCL tunnelling)
- HS2's tunnel boring machines used in the neighbouring section will arrive just south of Parkway junction and be dismantled
- Euston Approach tunnels will be located beneath the railway cutting and small section of the road on Park Village East, but not beneath any houses or flats





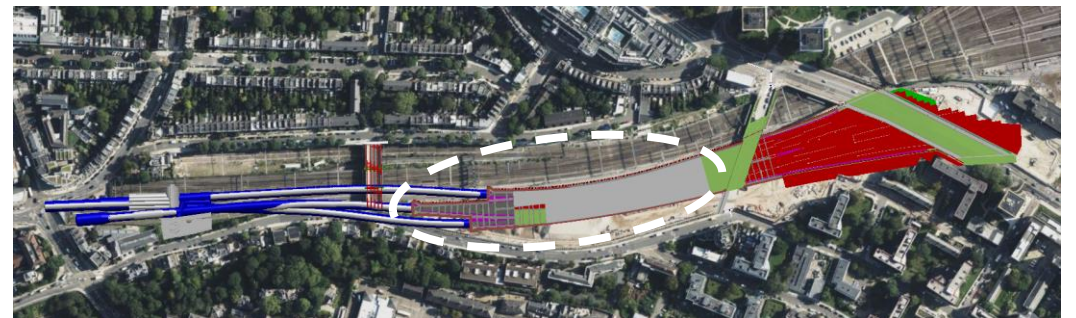
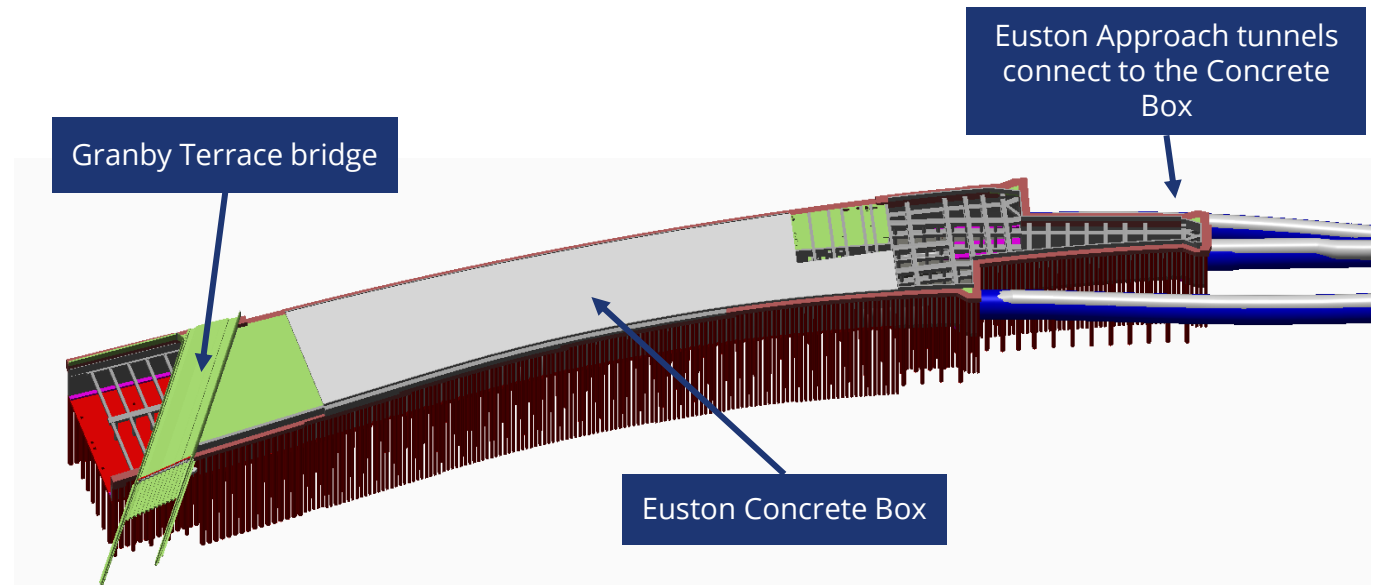
## 2. Euston Concrete Box

- Covered section of the railway cutting, like an open-ended box
- Extends from south of Mornington Street bridge to Granby Terrace bridge
- Positioned partly above, partly below ground

### Euston Over-Station Development

The top of the box will provide the foundation for future buildings due to be built above the railway cutting as part of the Euston Over-Station Development. Lendlease is responsible for planning this oversite development.

Find out more about plans for this future development and how to get involved in shaping them at [eustonosd.commonplace.is/](http://eustonosd.commonplace.is/)



# 3. Headhouses

A headhouse is a building located above-ground, which contains rail machinery and provides access to the tracks or tunnels below ground for maintenance or emergencies.

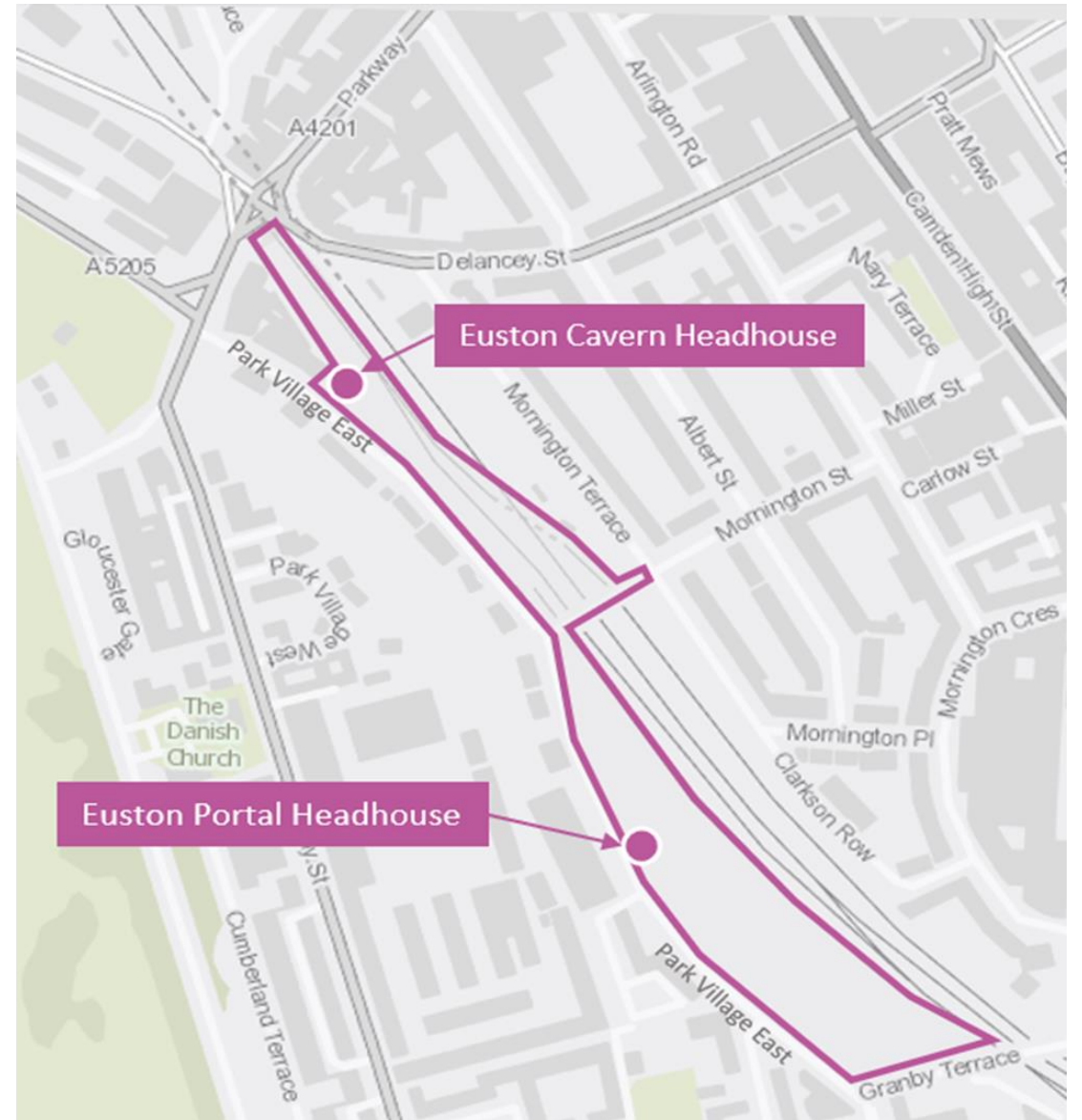
Both headhouses will provide safe access to the tunnels for maintenance and emergency services from Park Village East.

## A. Euston Cavern Headhouse

- Located over the intervention shaft next to 1 Park Village East
- Planning application will be submitted in late spring 2022

## B. Euston Portal Headhouse

- Will sit on top of the concrete box, where the tunnels connect to the box south of Mornington Street bridge
- Once we have an initial design we will share it with you and gather your feedback



# 3a. Euston Cavern Headhouse



Euston Cavern Headhouse from Park Village East

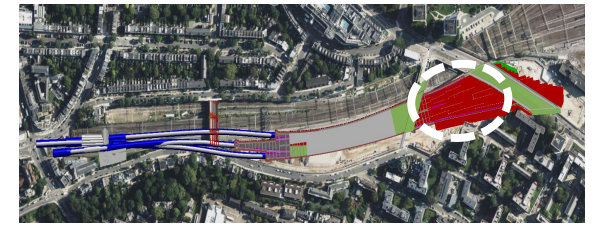


Euston Cavern Headhouse from Mornington Terrace



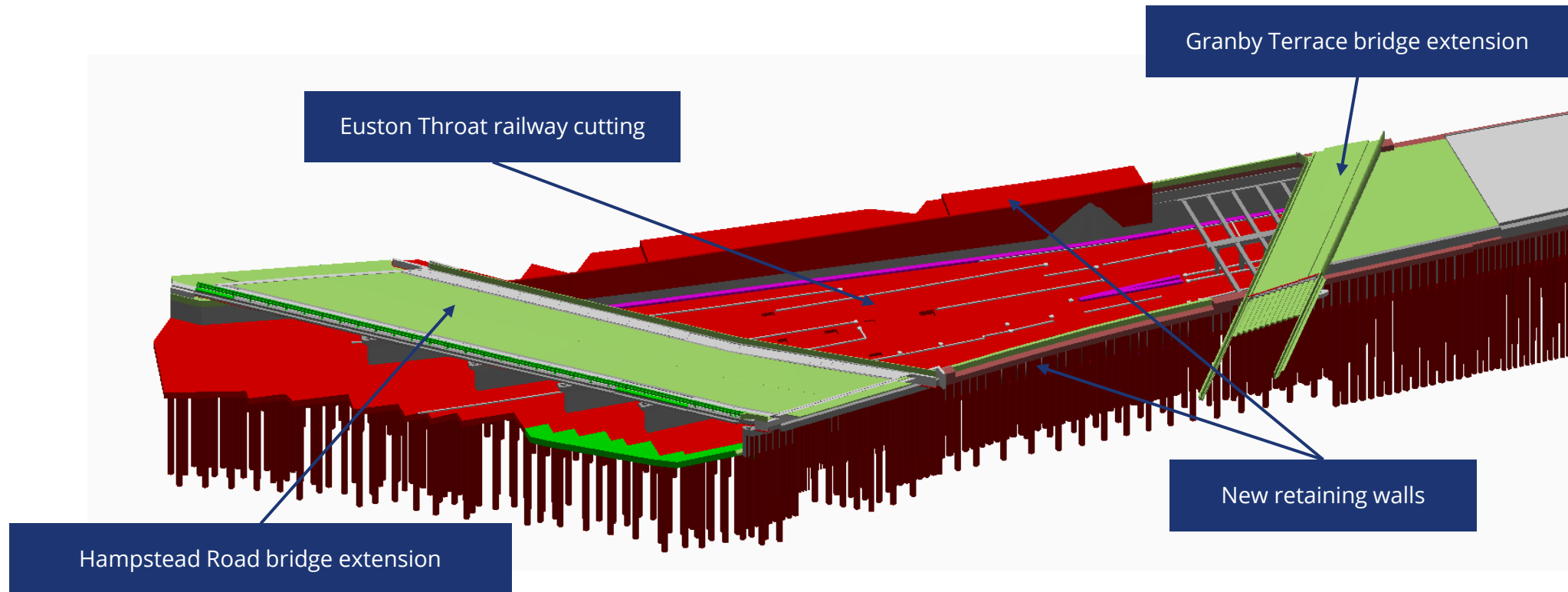


# 4. Euston Throat Railway Cutting



We are creating a wider, deeper railway cutting in front of Regent's Park Estate to make way for the new HS2 railway.

There will be two new, parallel retaining walls between Granby Terrace and Hampstead Road bridges to separate HS2 from the Network Rail tracks.



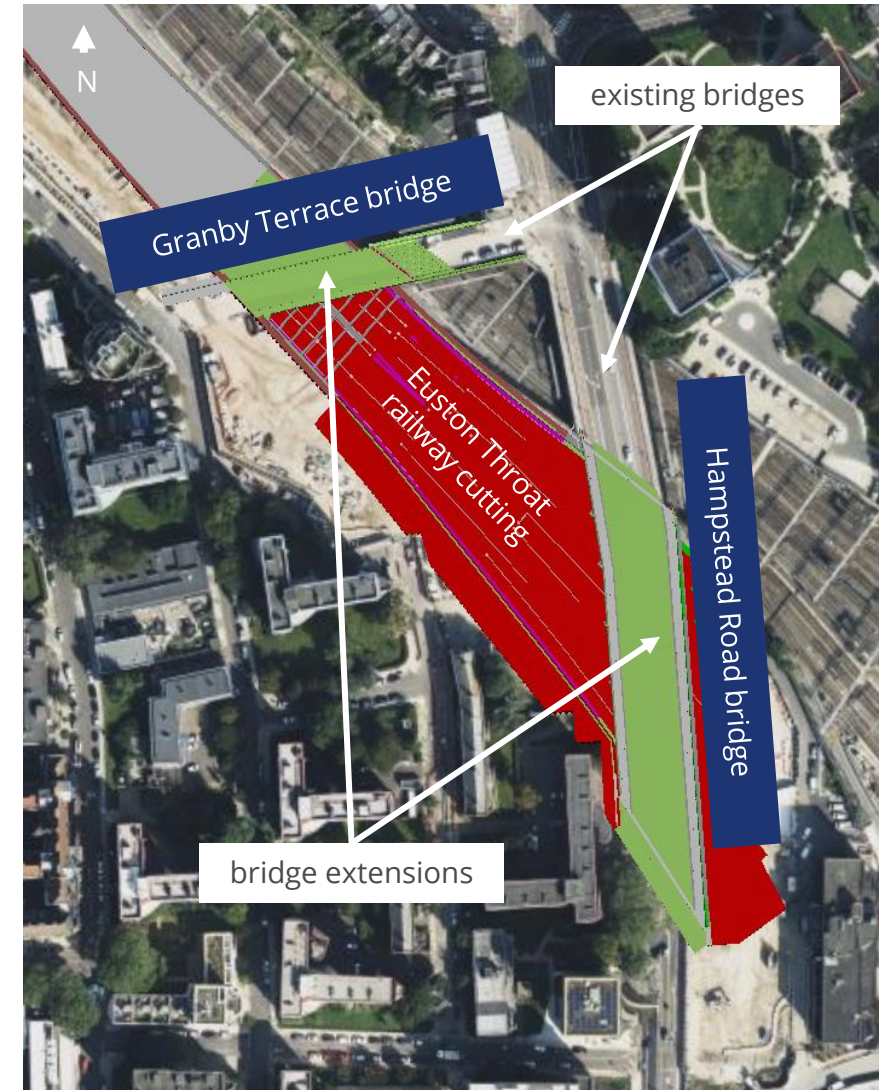
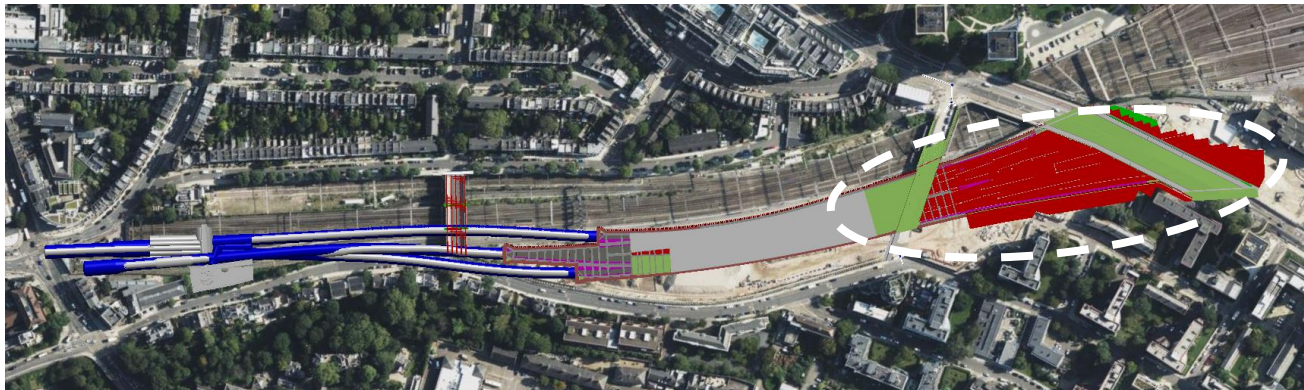


# 5. Bridge extensions

We will extend both Granby Terrace and Hampstead Road bridge over the new railway cutting to make way for the HS2 trains to pass beneath.

## Mitigating construction impacts

- We are carrying out extensive utility diversions to prevent disruption to local services
- We will construct a temporary road to reduce traffic impacts while we extend Hampstead Road bridge



# HS2 Helpdesk

For all enquiries, compliments or complaints please contact the HS2 Helpdesk

- Freephone **08081 434 434**
- Email [HS2enquiries@hs2.org.uk](mailto:HS2enquiries@hs2.org.uk)

You can sign up to receive updates about HS2 works in your local area at [www.hs2inyourarea.co.uk](http://www.hs2inyourarea.co.uk)

---