



Notice of Footpath Closures and Diversions in Ladbroke and Southam

August 2021 | www.hs2.org.uk

High Speed Two (HS2) is the new high speed railway for Britain. We continually reviewing the works on our construction sites in line with Government and Public Health England (PHE) advice on dealing with COVID-19. The Government's current strategy makes it clear that construction activity can continue as long as it complies with this guidance. Please be assured that only sites that can operate within the guidelines are operational. All sites will remain under constant review. You can sign up for regular updates in your local area at www.hs2inwarwickshire.co.uk.

What are we doing?

As we progress our works, we will need to close some footpaths in the areas around Southam and Ladbroke. This is to allow for our main earthworks to commence and for the construction of our internal access roads.

This September, we will begin excavating and moving earth with large plant and machinery. These works will cross footpath SM33, between Southam and Ladbroke. Once our construction is near completion, this footpath will reopen and will cross the HS2 rail line using the A423 Southam Road overbridge. Due to the location of this footpath, a diversion route is not possible during the closure period and it will be fully closed, 24 hours a day.

A small section of the Harry Green Way near Ladbroke, will also be closed. This footpath will be diverted along a nearby farm access road. This is to allow us to commence earthworks in the area. We will be using large plant and machinery in close proximity to the diversion route. The diversion will remain in place for as long as possible. The safety of users is paramount and further alterations or closures may be required as the earthworks continue.

When will these works take place?

Footpath SM33 will be fully closed, 24 hours a day, from Southam Football club to an area just north of Ladbroke. This closure will start in early September 2021 for a period of approximately three years. Footpath SM90 (The Harry Green Way) will be diverted for a short section near Ladbroke Hill Lane, from early September 2021 for a period of approximately three years.

If you have a question about HS2 or our works, please contact our HS2 Helpdesk team on 08081 434 434 or email hs2enquiries@hs2.org.uk

Duration of works

Starting September 2021

What to expect

Varied activities with both quiet and busier periods

Footpath closures and diversions

Noise from plant and equipment used for the earthworks

What we will do

Manage any environmental impacts, such as traffic and noise

Respond promptly to any complaints and take appropriate action

Take care to respect the community

Notice of Footpath Closures and Diversions in Ladbrooke and Southam

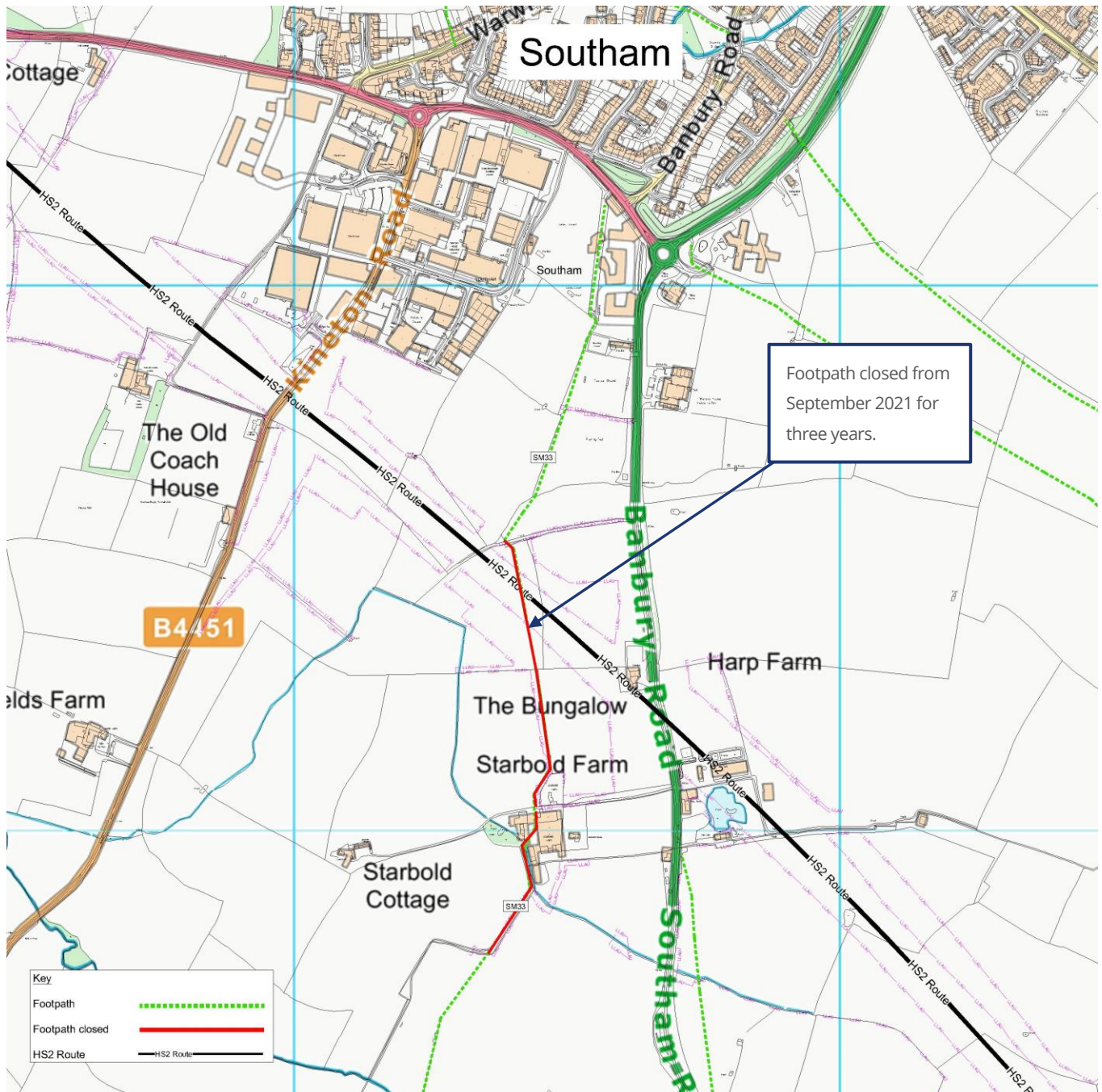
Notification



www.hs2.org.uk

Where will the works take place?

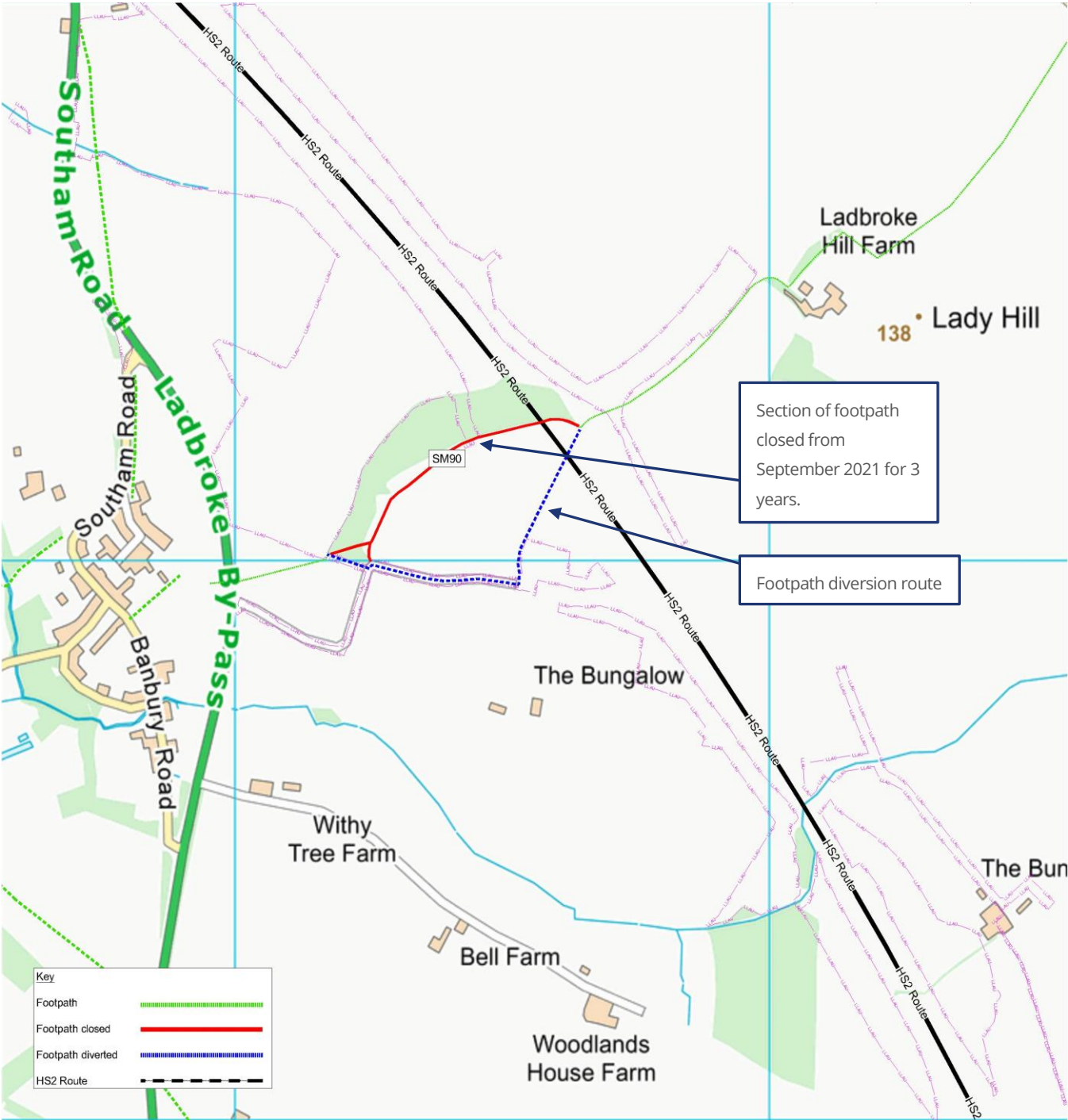
The map below, shows the section of footpath SM33 that is closed. Signage on the footpath will indicate the closure.



Contact our HS2 Helpdesk team on **08081 434 434**

Where will the works take place?

The map below, shows the section of footpath SM90 that is closed with diversion in place, to maintain access along the footpath. Signage on the footpath will indicate the section of footpath that is closed and the diversion.



Keeping you informed

We are committed to keeping you informed about work on HS2. This includes ensuring you know what to expect and when to expect it, as well as how we can help.

Residents' Charter and Commissioner

The Residents' Charter is our promise to communicate as clearly as we possibly can with people who live along or near the HS2 route.
www.gov.uk/government/publications/hs2-residents-charter

We also have an independent Residents' Commissioner whose job is to make sure we keep to the promises we make in the Charter and to keep it under constant review. Find reports at:
www.gov.uk/government/collections/hs2-ltd-residents-commissioner

You can contact the Commissioner at:
residentscommissioner@hs2.org.uk

Construction Commissioner

The Construction Commissioner's role is to mediate and monitor the way in which HS2 Ltd manages and responds to construction complaints. You can contact the Construction Commissioner by emailing:
complaints@hs2-cc.org.uk

Property and compensation

You can find out all about HS2 and properties along the line of route by visiting:
www.gov.uk/government/collections/hs2-property
Find out if you're eligible for compensation at:
www.gov.uk/claim-compensation-if-affected-by-hs2

Holding us to account

If you are unhappy for any reason you can make a complaint by contacting our HS2 Helpdesk team. For more details on our complaints process, please visit our website:
www.hs2.org.uk/how-to-complain

Contact Us

Contact our HS2 Helpdesk team all day, every day of the year on:

 Freephone **08081 434 434**

 Minicom **08081 456 472**

 Email **hs2enquiries@hs2.org.uk**

Write to:

FREEPOST

HS2 Community Engagement

Website **www.hs2.org.uk**

To keep up to date with what is happening in your local area, visit:
www.hs2inyourarea.co.uk

Please contact us if you'd like a free copy of this document in large print, Braille, audio or easy read. You can also contact us for help and information in a different language.

HS2 Ltd is committed to protecting personal information. If you wish to know more about how we use your personal information please see our Privacy Notice
<https://www.gov.uk/government/publications/high-speed-two-ltd-privacy-notice>

Reference number: HS2-MW-EK-Ph1-Ar-Ce-C2-Traf-43-17/08/2021

High Speed Two (HS2) Limited, registered in England and Wales.
Registered office: Two Snowhill, Snow Hill Queensway, Birmingham B4 6GA.
Company registration number: 06791686. VAT registration number: 888 8512 56.