

Update Notice: Access and site compounds on Wormwood Scrubs

High Speed Two (HS2) is the new high speed railway for Britain.

We are continually reviewing the works on our construction sites in line with Government and Public Health England (PHE) advice on dealing with COVID-19. The Government's current strategy makes it clear that construction activity can continue as long as it complies with this guidance. Please be assured that only sites that can operate within the guidelines are operational. All sites will remain under constant review.

New vehicle access off Old Oak Common Lane

From the 5 July, we will be constructing a new access road from Old Oak Common Lane on to Wormwood Scrubs. The road will provide access to the HS2 site compounds on the Scrubs. Please see the map on page 3 for details of the new access road.

The new access will help us bring deliveries of materials and equipment in safely, so that we can later divert the utility services and the Stamford Brooks Sewer.

Signage will be placed along Old Oak Common Lane to indicate the new site entrances.

If you have a question about HS2 or our works, please contact our HS2 Helpdesk team on 08081 434 434 or email hs2enquiries@hs2.org.uk

Notification



Duration of works

Construction of a new access road from 5 July until October 2021. We will work between 8am-6pm Monday to Friday. We may also work on Saturdays between 8am-1pm if required

What to expect

An increase in activity on Old Oak Common Lane, including additional vehicles entering and leaving site

What we will do

Construction of a new access road from Old Oak Common Lane into Wormwood Scrubs. Installation of a site compound including site cabins, hoarding, and fencing in Wormwood Scrubs

We will use best practicable means to minimise any impact on our site neighbours

Update Notice: Access and site compounds on Wormwood Scrubs

www.hs2.org.uk

Notification



Site compounds and hoarding on Wormwood Scrubs

From the 5 July, we will install a site compound in the north west corner of Wormwood Scrubs. Site hoarding and vehicle access gates will be installed. The site compound will be used to house our two-storey site cabin as well as the equipment, such as cranes and diggers, to support utility diversion works in this area. The site compound is adjacent to Old Oak Common Lane.

From early August we will be installing another site compound to the north of Wormwood Scrubs. We will erect timber hoarding around the site compound, and a two-storey site cabin will also be housed in this compound. The site compound will also be used to support the sewer diversion works.

Please see the map on page 3 for details of the site compounds.

Update Notice: Access and site compounds on Wormwood Scrubs

www.hs2.org.uk

Notification



Virtual drop-in events in 2021

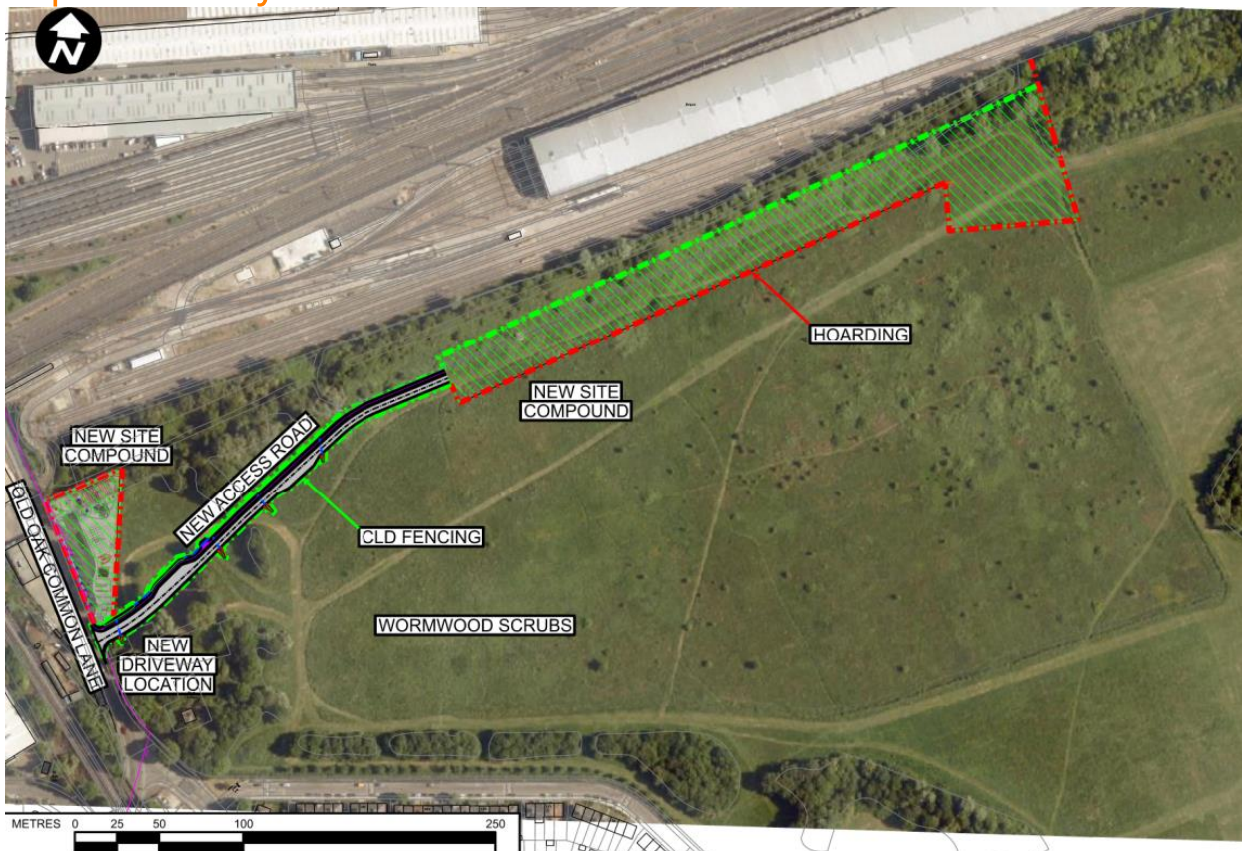
HS2 will continue with its programme of monthly virtual drop-in events. Dates for the end of 2021 are as follows:

- Wednesday 30 June 2021
- Wednesday 28 July 2021
- Wednesday 25 August 2021
- Wednesday 29 September 2021
- Wednesday 27 October 2021
- Wednesday 24 November

Further information on the topics featured and how to register will be sent to residents closer to the time.

More information can be found at www.hs2inoldoak.co.uk.

Map of site activity



Contact our HS2 Helpdesk team on **08081 434 434**

Keeping you informed

We are committed to keeping you informed about work on HS2. This includes ensuring you know what to expect and when to expect it, as well as how we can help.

Residents' Charter and Commissioner

The Residents' Charter is our promise to communicate as clearly as we possibly can with people who live along or near the HS2 route.
www.gov.uk/government/publications/hs2-residents-charter

We also have an independent Residents' Commissioner whose job is to make sure we keep to the promises we make in the Charter and to keep it under constant review. Find reports at:
www.gov.uk/government/collections/hs2-ltd-residents-commissioner

You can contact the Commissioner at:
residentscommissioner@hs2.org.uk

Construction Commissioner

The Construction Commissioner's role is to mediate and monitor the way in which HS2 Ltd manages and responds to construction complaints. You can contact the Construction Commissioner by emailing:
complaints@hs2-cc.org.uk

Property and compensation

You can find out all about HS2 and properties along the line of route by visiting:
www.gov.uk/government/collections/hs2-property
Find out if you're eligible for compensation at:
www.gov.uk/claim-compensation-if-affected-by-hs2


Holding us to account

If you are unhappy for any reason you can make a complaint by contacting our HS2 Helpdesk team. For more details on our complaints process, please visit our website:
www.hs2.org.uk/how-to-complain

Contact Us

Contact our HS2 Helpdesk team all day, every day of the year on:

 Freephone **08081 434 434**

 Minicom **08081 456 472**

 Email hs2enquiries@hs2.org.uk

Write to:

FREEPOST

HS2 Community Engagement

Website www.hs2.org.uk

To keep up to date with what is happening in your local area, visit:
www.hs2inoldoak.co.uk

Please contact us if you'd like a free copy of this document in large print, Braille, audio or easy read. You can also contact us for help and information in a different language.

HS2 Ltd is committed to protecting personal information. If you wish to know more about how we use your personal information please see our Privacy Notice
<https://www.gov.uk/government/publications/high-speed-two-ltd-privacy-notice>

Reference number: HS2-MW-BBVS-Ph1-OOC-St-S4-Prog-works-20-30/06/2021

High Speed Two (HS2) Limited, registered in England and Wales.
Registered office: Two Snowhill, Snow Hill Queensway, Birmingham B4 6GA.
Company registration number: 06791686. VAT registration number: 888 8512 56.