

Notice of ecology works, Southam

June 2021 | www.hs2.org.uk

High Speed Two (HS2) is the new high speed railway for Britain. We are continually reviewing the works on our construction sites in line with Government and Public Health England (PHE) advice on dealing with COVID-19. The Government's current strategy makes it clear that construction activity can continue as long as it complies with this guidance.

Please be assured that only sites that can operate within the guidelines are operational. All sites will remain under constant review. We have postponed all face-to-face engagement events and meetings and have put in place a number of channels to communicate with communities, such as letters and phone calls, as well as updates and alerts from each of the local community websites. You can sign up for regular updates in your local area at www.hs2inwarwickshire.co.uk.

What are we doing?

In preparation for the main construction works we have built a number of new habitat sites along the HS2 route that will be populated not just by protected species, but also by a naturally diverse range of plants and animals. Ecological surveys have been completed in relation to species such as great crested newts, reptiles, badgers, owls and bats.

Following on from these surveys we will continue to carry out further ecological seasonal mitigation works during July 2021.

In order to complete these works, we will need to put in place an intermittent lane closure with traffic lights on Banbury Road, Southam between 5 -30 July 2021. The lane closure will be in place between the hours of 9.30am – 3.30pm, the road will be fully open outside of these hours. The lane closure is to provide a safe working area to allow further survey and ecology mitigation works to be completed. Please see map enclosed for further location details near to the former Willows Car Sales premises

If you have a question about HS2 or our works, please contact our HS2 Helpdesk team on 08081 434 434 or email hs2enquiries@hs2.org.uk

Notification



Ecological Mitigation

July 2021

What to expect

Intermittent lane closure on Banbury Road, Southam between 5 – 30 July 2021

9.30am – 3.30pm

Some additional traffic on local roads.

Some noise from the equipment used for the works.

What we will do

Manage any impacts, such as traffic and noise with the aim of reducing or removing them

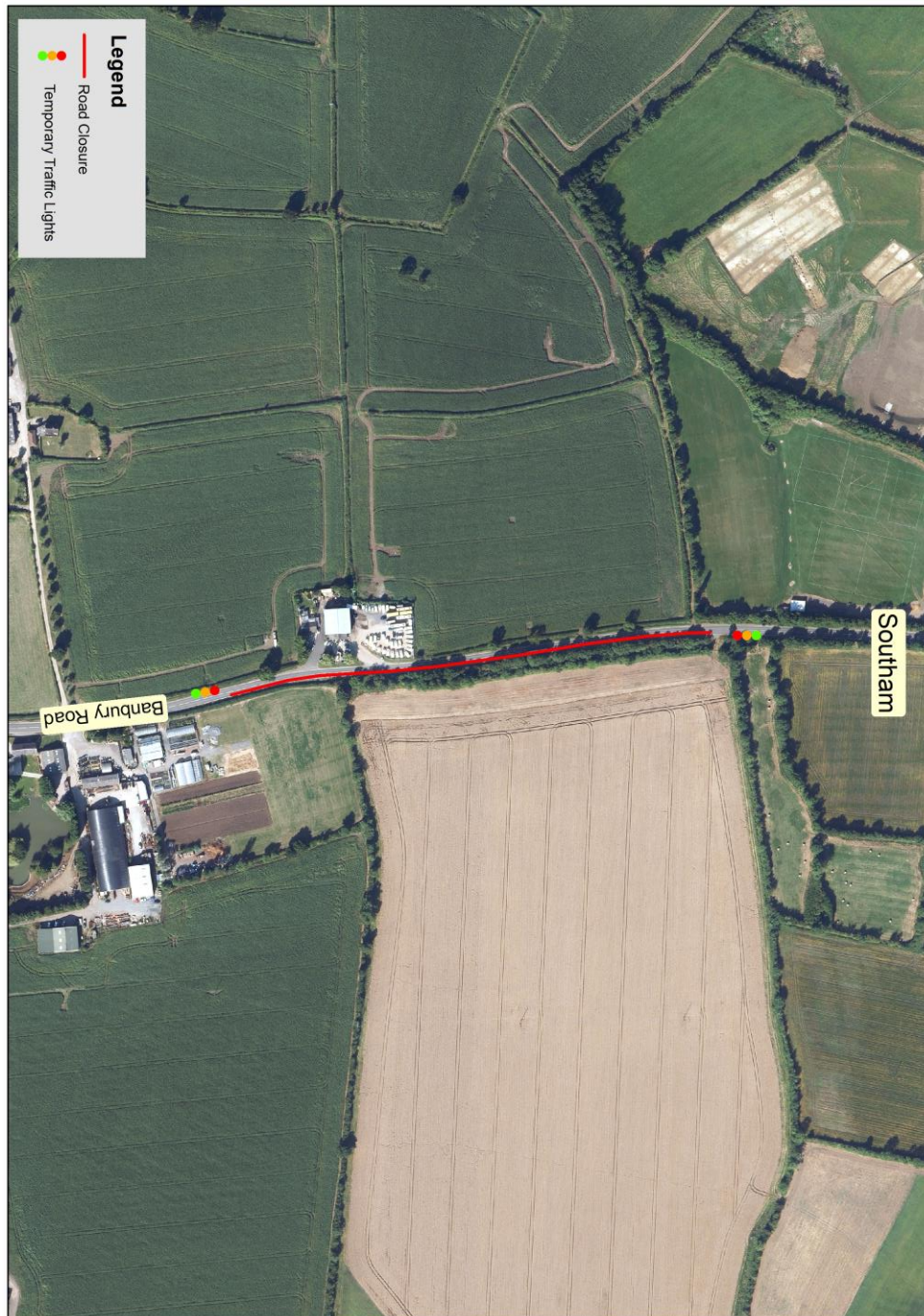
Notice of ecology works, Southam

Notification



www.hs2.org.uk

Location of lane closure, Banbury Road, Southam



Contact our HS2 Helpdesk team on **08081 434 434**

Keeping you informed

We are committed to keeping you informed about work on HS2. This includes ensuring you know what to expect and when to expect it, as well as how we can help.

Residents' Charter and Commissioner

The Residents' Charter is our promise to communicate as clearly as we possibly can with people who live along or near the HS2 route.
www.gov.uk/government/publications/hs2-residents-charter

We also have an independent Residents' Commissioner whose job is to make sure we keep to the promises we make in the Charter and to keep it under constant review. Find reports at:
www.gov.uk/government/collections/hs2-ltd-residents-commissioner

You can contact the Commissioner at:
residentscommissioner@hs2.org.uk

Construction Commissioner

The Construction Commissioner's role is to mediate and monitor the way in which HS2 Ltd manages and responds to construction complaints. You can contact the Construction Commissioner by emailing:
complaints@hs2-cc.org.uk

Property and compensation

You can find out all about HS2 and properties along the line of route by visiting:
www.gov.uk/government/collections/hs2-property
Find out if you're eligible for compensation at:
www.gov.uk/claim-compensation-if-affected-by-hs2


Holding us to account

If you are unhappy for any reason you can make a complaint by contacting our HS2 Helpdesk team. For more details on our complaints process, please visit our website:
www.hs2.org.uk/how-to-complain

Contact Us

Contact our HS2 Helpdesk team all day, every day of the year on:

 Freephone **08081 434 434**

 Minicom **08081 456 472**

 Email **hs2enquiries@hs2.org.uk**

Write to:

FREEPOST

HS2 Community Engagement

Website **www.hs2.org.uk**

To keep up to date with what is happening in your local area, visit:
www.hs2inyourarea.co.uk

Please contact us if you'd like a free copy of this document in large print, Braille, audio or easy read. You can also contact us for help and information in a different language.

HS2 Ltd is committed to protecting personal information. If you wish to know more about how we use your personal information please see our Privacy Notice
<https://www.gov.uk/government/publications/high-speed-two-ltd-privacy-notice>

Reference number: FUS_AWN_0226 HS2-EW-Fusion -Ph1-Ar-Ce-C3-Traf-45-23/06/2021

High Speed Two (HS2) Limited, registered in England and Wales.
Registered office: Two Snowhill, Snow Hill Queensway, Birmingham B4 6GA.
Company registration number: 06791686. VAT registration number: 888 8512 56.