

Notice of Brackley Road closure, Radstone update

July 2021 | www.hs2.org.uk

High Speed Two (HS2) is the new high speed railway for Britain. We are continually reviewing the works on our construction sites in line with Government and Public Health England (PHE) advice on dealing with COVID-19. The Government's current strategy makes it clear that construction activity can continue as long as it complies with this guidance.

Please be assured that only sites that can operate within the guidelines are operational. All sites will remain under constant review. We have postponed all face-to-face engagement events and meetings and have put in place a number of channels to communicate with communities, such as letters and phone calls, as well as updates and alerts from each of the local community websites. You can sign up for regular updates in your local area at www.hs2innorthants.co.uk

What will we be doing?

We are continuing our established programme of bat tree surveys. This will identify any future works to remove the required trees along the line of route in the coming months based upon the survey data.

Now that we have completed all surveys works, we need to undertake a series of mitigation works in accordance with the ecological seasonal calendar. To enable this to happen safely we will need to have a road closure between 09.30am until 3.30pm. This is to allow ecologists to safely observe and where necessary climb roadside trees to check for habitat before felling. The programme and road closure location are below

- **Road Closure** -Brackley Road, Radstone – 2 August 2021 to 4 August 2021

The road will be open as usual outside of these hours.

Details of the road closures and diversion routes can be found on the map enclosed.

If you have a question about HS2 or our works, please contact our HS2 Helpdesk team on 08081 434 434 or email hs2enquiries@hs2.org.uk

Notification



Duration of works

We will be closing the following road;

Brackley Road, Radstone

2 August 2021 to 4 August 2021

Off peak hours:

9.30am – 3.30pm

Our contractors may also be on site for one hour's start-up and shutdown outside of these times

What to expect

Some additional traffic on local roads.

Delays to your journey

What we will do

Manage any impacts, such as traffic and noise with the aim of reducing or removing them

Notice of Brackley Road closure, Radstone update

Notification



www.hs2.org.uk

What will we be doing continued,

To notify road users of the upcoming road closure, verge advance warning signs will be erected.

The diversion signage will be in place and operated during the working hours described, however road closed signs will be removed when non-working hours resume. These signs will be mounted on standard A frames and secured with ballasted sandbags.

The diversion routes for the road closure can be viewed on the next page or alternatively they can be found at www.hs2innorthants.co.uk

How may this affect you?

We will be working hard to ensure any impacts on residents are kept to a minimum during these and all our future works. You may notice a little extra traffic on the road immediately around the sites with workers and delivery vehicles moving to and from the site. There may be some noise from the machinery. All machinery will be restricted to running between the hours of 8am to 6pm.

For this stage of works we will not be closing any Public Rights of Way. For further updates about these works and HS2 in general, please visit www.hs2innorthants.co.uk where you can sign up to news alerts.

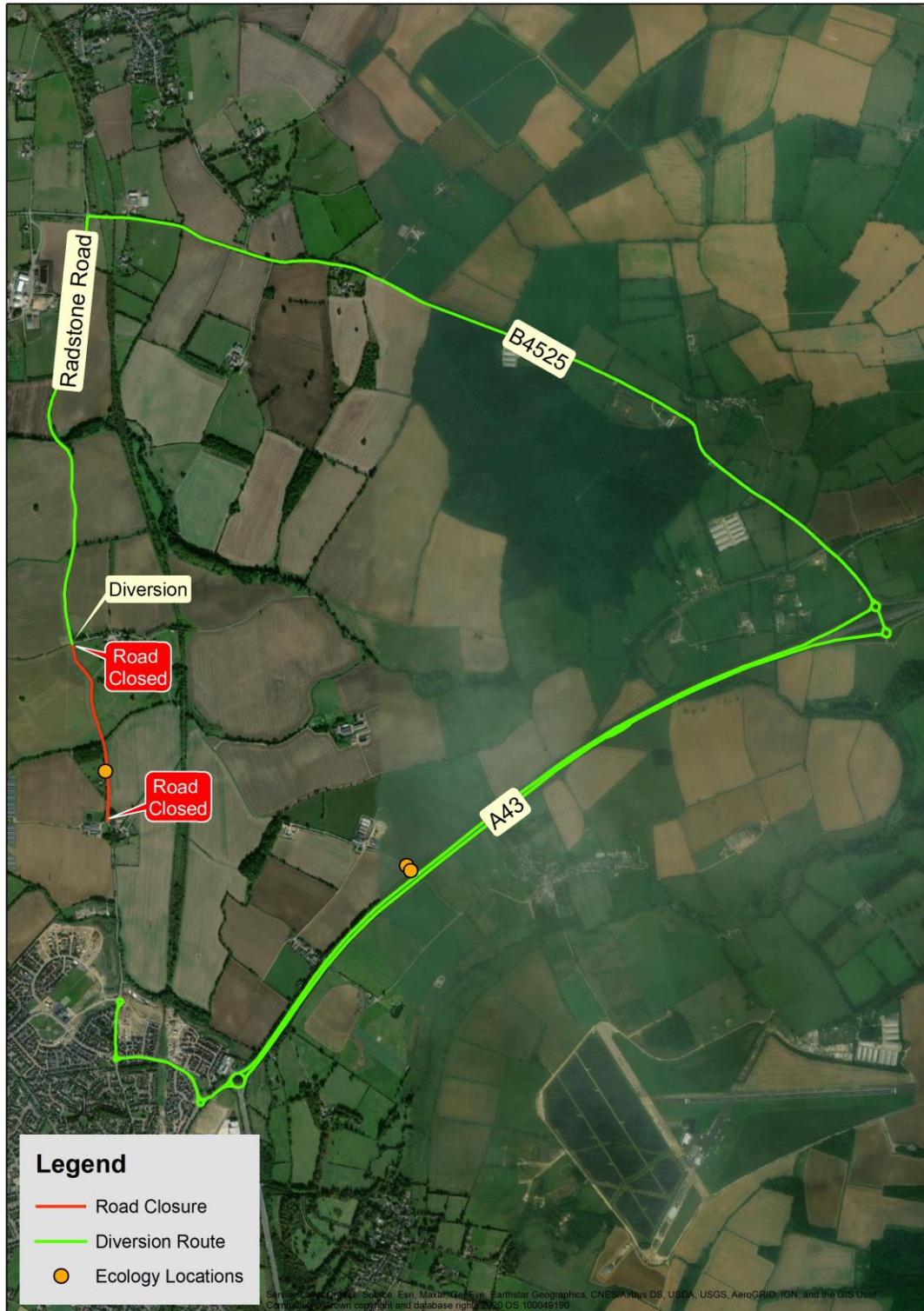
Notice of Brackley Road closure, Radstone update

Notification



www.hs2.org.uk

Brackley road closure and ecology mitigation



Contact our HS2 Helpdesk team on **08081 434 434**

Keeping you informed

We are committed to keeping you informed about work on HS2. This includes ensuring you know what to expect and when to expect it, as well as how we can help.

Residents' Charter and Commissioner

The Residents' Charter is our promise to communicate as clearly as we possibly can with people who live along or near the HS2 route.

www.gov.uk/government/publications/hs2-residents-charter

We also have an independent Residents' Commissioner whose job is to make sure we keep to the promises we make in the Charter and to keep it under constant review. Find reports at:

www.gov.uk/government/collections/hs2-ltd-residents-commissioner

You can contact the Commissioner at:
residentscommissioner@hs2.org.uk

Construction Commissioner

The Construction Commissioner's role is to mediate and monitor the way in which HS2 Ltd manages and responds to construction complaints. You can contact the Construction Commissioner by emailing:
complaints@hs2-cc.org.uk

Property and compensation

You can find out all about HS2 and properties along the line of route by visiting:

www.gov.uk/government/collections/hs2-property

Find out if you're eligible for compensation at:

www.gov.uk/claim-compensation-if-affected-by-hs2

Holding us to account

If you are unhappy for any reason you can make a complaint by contacting our HS2 Helpdesk team. For more details on our complaints process, please visit our website:

www.hs2.org.uk/how-to-complain

Contact Us

Contact our HS2 Helpdesk team all day, every day of the year on:

 Freephone **08081 434 434**

 Minicom **08081 456 472**

 Email **hs2enquiries@hs2.org.uk**

Write to:

FREEPOST

HS2 Community Engagement

Website **www.hs2.org.uk**

To keep up to date with what is happening in your local area, visit:
www.hs2inyourarea.co.uk

Please contact us if you'd like a free copy of this document in large print, Braille, audio or easy read. You can also contact us for help and information in a different language.

HS2 Ltd is committed to protecting personal information. If you wish to know more about how we use your personal information please see our Privacy Notice
<https://www.gov.uk/government/publications/high-speed-two-ltd-privacy-notice>

Reference number: FUS_AWN_0237

HS2-EW-Fusion -Ph1-Ar-Ce-C2-Traf-3-20/07/2021

High Speed Two (HS2) Limited, registered in England and Wales.

Registered office: Two Snowhill, Snow Hill Queensway, Birmingham B4 6GA.

Company registration number: 06791686. VAT registration number: 888 8512 56.