

## Update of works in Greatworth to Edgcote

May 2021 | [www.hs2.org.uk](http://www.hs2.org.uk)

High Speed Two (HS2) is the new high speed railway for Britain. We are continually reviewing the works on our construction sites in line with Government and Public Health England (PHE) advice on dealing with COVID-19. The Government's current strategy makes it clear that construction activity can continue as long as it complies with this guidance.

Please be assured that only sites that can operate within the guidelines are operational. All sites will remain under constant review. We have postponed all face-to-face engagement events and meetings and have put in place a number of channels to communicate with communities, such as letters and phone calls, as well as updates and alerts from each of the local community websites. You can sign up for regular updates in your local area at [www.hs2innorthants.co.uk](http://www.hs2innorthants.co.uk)

### What will we be doing?

As part of our continuing works ahead of the construction of the railway we are undertaking some further work in your area. These works consist of:

- Archaeological mitigation
- Ecology surveys and mitigation
- Boundary fencing

### Archaeological mitigation

We have carried out archaeological surveys and trial trench evaluation work locally to identify areas of possible archaeological interest. We have previously written about this work and this notice provides a further update. We are now in the next stage of our investigations which involves topsoil excavation, recording artefacts and mitigation work.

**If you have a question about HS2 or our works, please contact our HS2 Helpdesk team on 08081 434 434 or email [hs2enquiries@hs2.org.uk](mailto:hs2enquiries@hs2.org.uk)**

### Notification



#### Duration of works

The works are ongoing until November 2021.

Normal working hours are Monday to Friday 8am - 6pm.

Occasional Saturday working between 8am - 1pm.

#### What to expect

Some additional traffic on local roads.

Noise from equipment used for the works

Storage and welfare works areas, 24hr site security.

#### What we will do

Manage impacts of the work, reducing or the impact of traffic and noise.

Take care to respect your community and the environment.

# Update of works Greatworth to Edgcote

[www.hs2.org.uk](http://www.hs2.org.uk)

Notification



## Archaeological mitigation continued

These works will enable a greater understanding of the history of the area. The investigations will be undertaken at the following sites; Blackgrounds Farm and the Edgcote area by teams of archaeologists using mechanical excavators and hand tools.

Please see the maps enclosed for further detail.

### Blackgrounds Farm

The work in this location is underway and will continue until November 2021. Access for this site is off Culworth Road and Welsh Road, we have placed warning verge side 'A' frame signage to alert motorists to turning vehicles. At the sites busiest periods there will be 60 archaeologists working on site.

The site compound will contain temporary track matting, lighting, fencing, welfare units and 24/7 security personnel.

### Edgcote area

The work at this location is ongoing and will continue until October 2021.

For part of the works we are using an existing access tracks to access the excavation sites. At the busiest periods there will be 30 archaeologists working on each site.

The site compound will contain temporary track matting, lighting, fencing, welfare units and 24/7 security personnel. Signage has been erected to notify motorists warn of the works access points.

# Update of works Greatworth to Edgcote

Notification



[www.hs2.org.uk](http://www.hs2.org.uk)

## Ecology surveys and mitigation – Bat Roosts

We are continuing our established programme of tree surveys for potential bat roosts. This will identify any future works to remove the required trees along the line of route in the coming months based upon the survey data.

Ahead of any tree felling works we need to undertake a series of surveys in accordance with the ecological seasonal calendar.

To enable this to happen safely we will need to have a full road or a lane closure (traffic lights) between 9.30am until 3.30pm. This is to allow ecologists to safely observe and where necessary climb roadside trees to check for habitat. The location of the traffic management is as follows, B4525, Welsh Road, Sulgrave Road, Culworth Road, Banbury Road and Helmdon Road. Advance work notification signage will be erected on the verge to advertise these works to motorists.

Some of the survey works will also need to be undertaken at dawn and dusk so you may see our team on site outside of normal working hours this will only involve visual inspection, no plant or machinery will be used at these times.

## Reptile and newt mitigation

Ecological surveys have been completed in relation to species such as great crested newts and reptiles. Following on from these surveys we will continue to carry out the seasonal mitigation works for these species; these works will continue until September 2021 and will include vegetation clearance once all ecology has been removed.

The works will predominantly take place at Thorpe Mandeville, Lower Thorpe and Trafford Bridge. Works will involve a small team of up to 10 working from mobile welfare units. At site access points we will place warning verge side 'A' frame signage to alert motorists to turning vehicles.

# Update of works Greatworth to Edgcote

Notification



[www.hs2.org.uk](http://www.hs2.org.uk)

## Boundary Fencing

We have the final sections of boundary fencing to be completed between Greatworth and Edgcote these works will continue until August 2021.

These works will involve a small team of up to 10 people working from mobile welfare units.

## How may this affect you?

We will be working hard to ensure any impacts on residents are kept to a minimum during these and all our future works.

You may notice a little extra traffic on the road immediately around the sites with workers and delivery vehicles moving to and from the site.

There may be some noise from the machinery. All machinery will be restricted to running between the hours of 8am to 6pm Monday to Friday.

For this stage of works we will not be closing any Public Rights of Way. Temporary traffic management signage and limited lane closures will be used as detailed above. However, we aim to minimise to as and where required.

For further updates about these works and HS2 in general, please visit [www.hs2innorthants.co.uk](http://www.hs2innorthants.co.uk) where you can sign up to news alerts

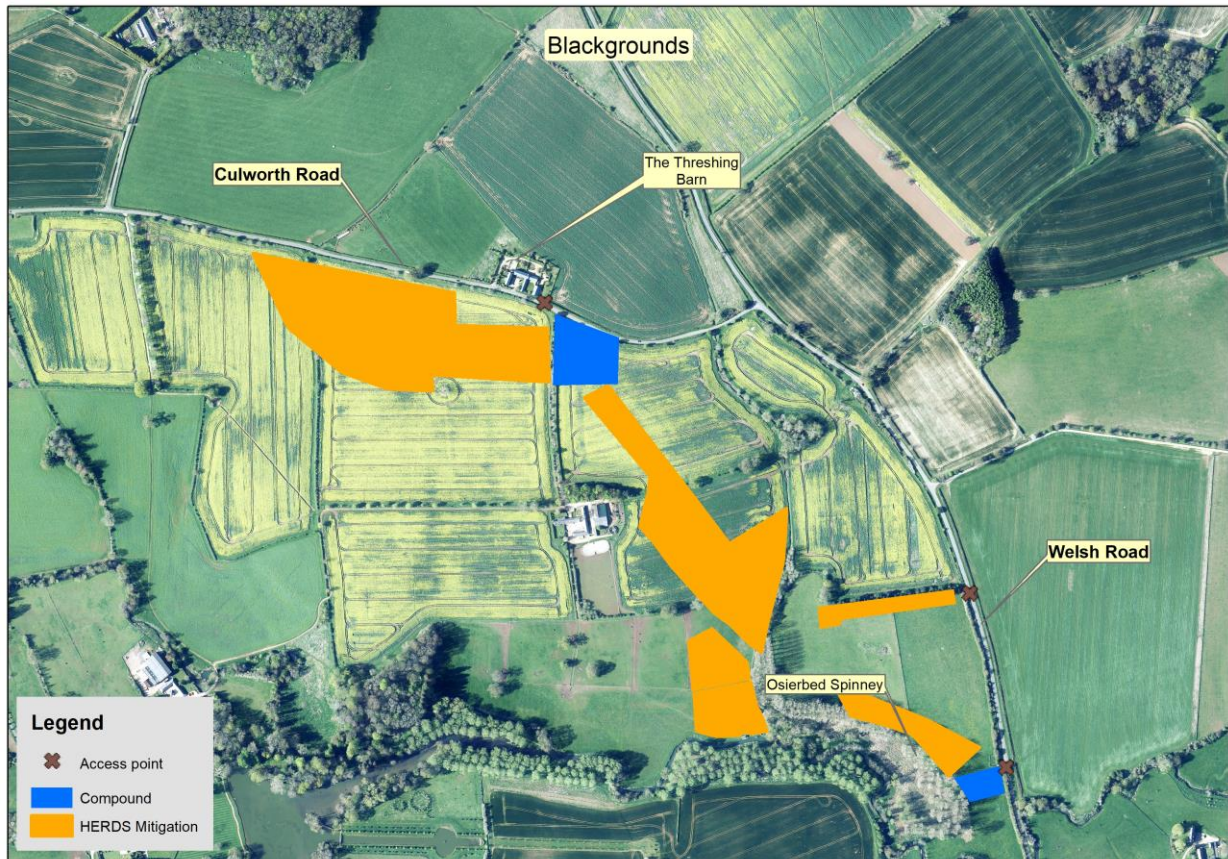
# Update of works in the Edgcote area

Notification



[www.hs2.org.uk](http://www.hs2.org.uk)

Location of archaeology works – Blackgrounds Farm



Contact our HS2 Helpdesk team on **08081 434 434**



# Update of works in the Edgcote area

Notification



[www.hs2.org.uk](http://www.hs2.org.uk)

Location of archaeology works – Edgcote area



Contact our HS2 Helpdesk team on **08081 434 434**

# Keeping you informed

We are committed to keeping you informed about work on HS2. This includes ensuring you know what to expect and when to expect it, as well as how we can help.

## Residents' Charter and Commissioner

The Residents' Charter is our promise to communicate as clearly as we possibly can with people who live along or near the HS2 route.  
[www.gov.uk/government/publications/hs2-residents-charter](http://www.gov.uk/government/publications/hs2-residents-charter)

We also have an independent Residents' Commissioner whose job is to make sure we keep to the promises we make in the Charter and to keep it under constant review. Find reports at:  
[www.gov.uk/government/collections/hs2-ltd-residents-commissioner](http://www.gov.uk/government/collections/hs2-ltd-residents-commissioner)

You can contact the Commissioner at:  
[residentscommissioner@hs2.org.uk](mailto:residentscommissioner@hs2.org.uk)

## Construction Commissioner

The Construction Commissioner's role is to mediate and monitor the way in which HS2 Ltd manages and responds to construction complaints. You can contact the Construction Commissioner by emailing:  
[complaints@hs2-cc.org.uk](mailto:complaints@hs2-cc.org.uk)

## Property and compensation

You can find out all about HS2 and properties along the line of route by visiting:  
[www.gov.uk/government/collections/hs2-property](http://www.gov.uk/government/collections/hs2-property)  
Find out if you're eligible for compensation at:  
[www.gov.uk/claim-compensation-if-affected-by-hs2](http://www.gov.uk/claim-compensation-if-affected-by-hs2)


## Holding us to account

If you are unhappy for any reason you can make a complaint by contacting our HS2 Helpdesk team. For more details on our complaints process, please visit our website:  
[www.hs2.org.uk/how-to-complain](http://www.hs2.org.uk/how-to-complain)

## Contact Us

Contact our HS2 Helpdesk team all day, every day of the year on:

 Freephone **08081 434 434**

 Minicom **08081 456 472**

 Email **[hs2enquiries@hs2.org.uk](mailto:hs2enquiries@hs2.org.uk)**

Write to:

**FREEPOST**

**HS2 Community Engagement**

Website **[www.hs2.org.uk](http://www.hs2.org.uk)**

To keep up to date with what is happening in your local area, visit:  
**[www.hs2inyourarea.co.uk](http://www.hs2inyourarea.co.uk)**

**Please contact us if you'd like a free copy of this document in large print, Braille, audio or easy read. You can also contact us for help and information in a different language.**

HS2 Ltd is committed to protecting personal information. If you wish to know more about how we use your personal information please see our Privacy Notice  
<https://www.gov.uk/government/publications/high-speed-two-ltd-privacy-notice>

**Reference number: FUS\_AWN\_0213 HS2-EW-Fusion -Ph1-Ar-Ce-C2-Prog-works-30-18/05/2021**

High Speed Two (HS2) Limited, registered in England and Wales.  
Registered office: Two Snowhill, Snow Hill Queensway, Birmingham B4 6GA.  
Company registration number: 06791686. VAT registration number: 888 8512 56.