

Turweston Manor and A43 lane closure - Update

May 2021 | www.hs2.org.uk

Notification



High Speed Two (HS2) is the new high speed railway for Britain. We are continually reviewing the works on our construction sites in line with Government and Public Health England (PHE) advice on dealing with COVID-19. The Government's current strategy makes it clear that construction activity can continue as long as it complies with this guidance.

Please be assured that only sites that can operate within the guidelines are operational. All sites will remain under constant review. We have postponed all face-to-face engagement events and meetings and have put in place a number of channels to communicate with communities, such as letters and phone calls, as well as updates and alerts from each of the local community websites. You can sign up for regular updates in your local area at www.hs2inbucksandbox.co.uk

This notice is to update you on the new A43 road closures dates and the continuing works at Turweston Manor.

What will we be doing?

As part of our continuing works ahead of the construction of the railway we need to undertake some further work in your area. We previously informed you about these works in September 2020 but due to unforeseen delays they have been rescheduled to begin in February 2021. These works will consist of:

- Archaeology works
- Boundary Fencing
- Ecological works- hedgerow removal
- Bat Mitigation

If you have a question about HS2 or our works, please contact our HS2 Helpdesk team on 08081 434 434 or email hs2enquiries@hs2.org.uk

Duration of works

The works will start in May 2021 and will be completed by mid-June 2021

Normal working hours
Monday to Friday 8am to 6pm and Saturday 8am - 1pm

What to expect

Night-time weekday single lane closures on the two lanes A43 between 8pm and 6am

Some additional traffic on local roads and noise from equipment. Site storage and welfare vehicles. Site operated with 24-hour security and temporary flood lighting

What we will do

Manage any impacts, such as traffic and noise with the aim of reducing or removing them

Turweston Manor and A43 road lane closure - update

Notification



www.hs2.org.uk

A43 night time lane closure

To complete the archaeology investigation and fencing works in this area, we need to use construction machinery. Due to the size of the equipment required and no alternative suitable access road available we will need to access the north of the site from the A43. This will require a night-time single lane closure to enable us to carry this out safely and with minimal disruption to users of the highway.

The night-time lane closures will take place between 20:00 and 06:00 from:

- Monday 04 May 2021 until Saturday 08 May 2021
- Monday 10 May 2021 until Saturday 15 May 2021

The following closures below will be identified by roadside signage and cones on the highway.

Once the closures are in place, we will bring construction equipment and materials to site and once works are completed, we will remove again using a lane closure. Construction operations will all take place during the day. The night operations are for localised delivery and removal only. Subsequent further distribution will be undertaken by day into the work area.

Installation of boundary fencing and Public Rights of Way

Our fencing works will begin in February 2021 and will be completed by the end of May 2021. For this stage of works we will not be closing any Public Rights of Way, but we will need to occasionally cross over them with machinery to access working areas. To ensure this happens safely we will have marshals in place who will suspend pedestrian access temporarily while the machinery passes through.

Turweston Manor and A43 road closure - update

www.hs2.org.uk

Notification



Archaeology trial trenching

The next phase of archaeological mitigation works following the trial trenches which took place in February, will begin in May. This is to give us a greater understanding of any archaeology that may be in your area. The excavations will be back filled once the works have been completed.

Access to the archaeology site will also be from the A422 compound, where we will cross the road and continue track matting past the former Ballabeg stables. Access will then continue to the archaeology work site work near to Versions Farm.

There may be some noise from the machinery, this will be restricted to running between the hours of 8am to 6pm Monday to Friday.

Please see map enclosed.

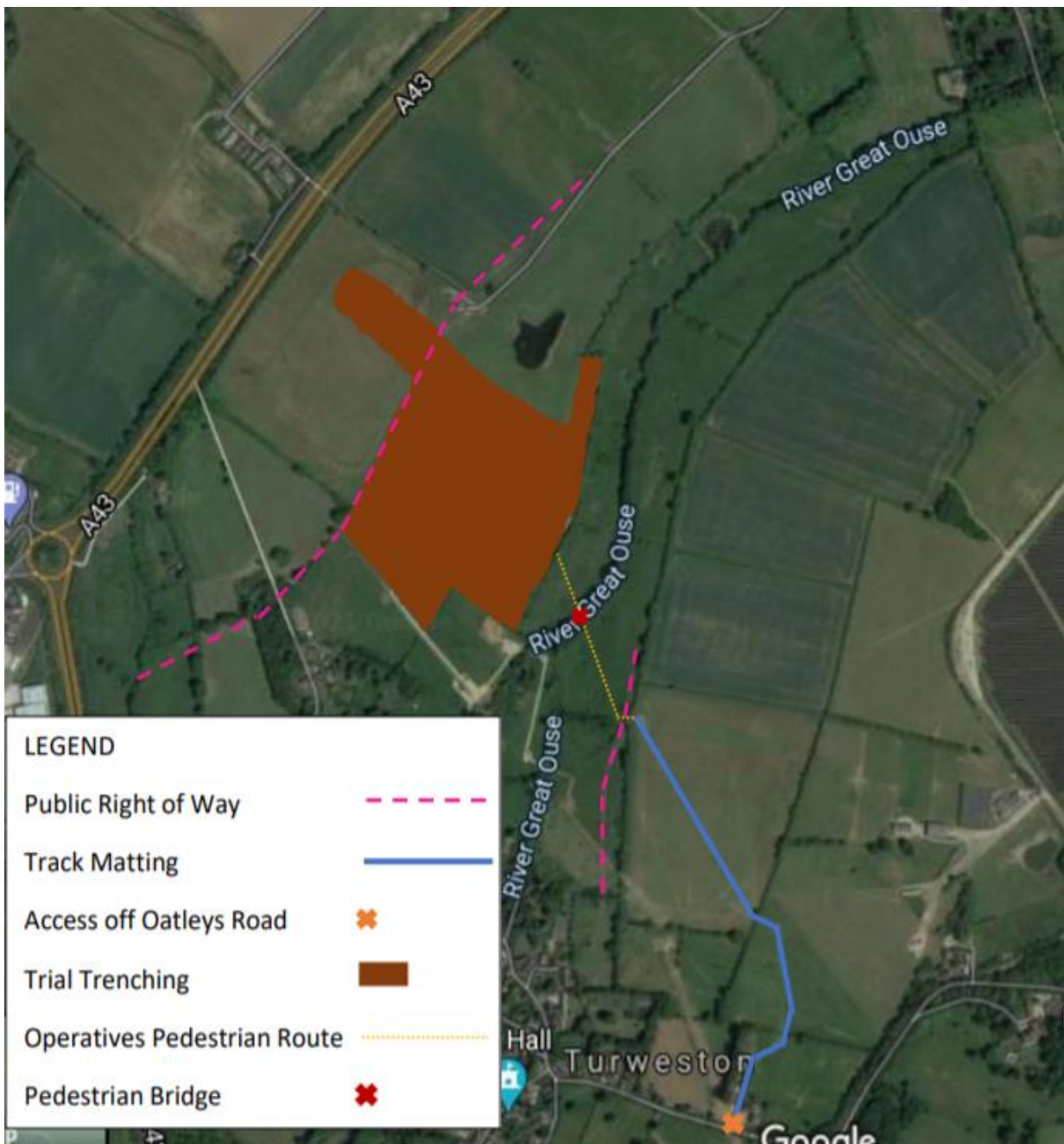
Turweston Manor and A43 road closure - update

Notification



www.hs2.org.uk

Location of archaeological works and access to site



Contact our HS2 Helpdesk team on **08081 434 434**

Keeping you informed

We are committed to keeping you informed about work on HS2. This includes ensuring you know what to expect and when to expect it, as well as how we can help.

Residents' Charter and Commissioner

The Residents' Charter is our promise to communicate as clearly as we possibly can with people who live along or near the HS2 route.

www.gov.uk/government/publications/hs2-residents-charter

We also have an independent Residents' Commissioner whose job is to make sure we keep to the promises we make in the Charter and to keep it under constant review. Find reports at:

www.gov.uk/government/collections/hs2-ltd-residents-commissioner

You can contact the Commissioner at:
residentscommissioner@hs2.org.uk

Construction Commissioner

The Construction Commissioner's role is to mediate and monitor the way in which HS2 Ltd manages and responds to construction complaints. You can contact the Construction Commissioner by emailing:
complaints@hs2-cc.org.uk

Property and compensation

You can find out all about HS2 and properties along the line of route by visiting:

www.gov.uk/government/collections/hs2-property

Find out if you're eligible for compensation at:

www.gov.uk/claim-compensation-if-affected-by-hs2

Holding us to account

If you are unhappy for any reason you can make a complaint by contacting our HS2 Helpdesk team. For more details on our complaints process, please visit our website:

www.hs2.org.uk/how-to-complain

Contact Us

Contact our HS2 Helpdesk team all day, every day of the year on:

 Freephone **08081 434 434**

 Minicom **08081 456 472**

 Email **hs2enquiries@hs2.org.uk**

Write to:

FREEPOST

HS2 Community Engagement

Website **www.hs2.org.uk**

To keep up to date with what is happening in your local area, visit:
www.hs2inyourarea.co.uk

Please contact us if you'd like a free copy of this document in large print, Braille, audio or easy read. You can also contact us for help and information in a different language.

HS2 Ltd is committed to protecting personal information. If you wish to know more about how we use your personal information please see our Privacy Notice
<https://www.gov.uk/government/publications/high-speed-two-ltd-privacy-notice>

Reference number: FUS_AWN_0167

HS2-EW-Fusion -Ph1-Ar-Ce-C3-Traf-28-05/06/2021

High Speed Two (HS2) Limited, registered in England and Wales.

Registered office: Two Snowhill, Snow Hill Queensway, Birmingham B4 6GA.

Company registration number: 06791686. VAT registration number: 888 8512 56.