



## Notice of short duration road/lane closures and diversion routes, Boddington

May 2021 | [www.hs2.org.uk](http://www.hs2.org.uk)

High Speed Two (HS2) is the new high speed railway for Britain. We are continually reviewing the works on our construction sites in line with Government and Public Health England (PHE) advice on dealing with COVID-19. The Government's current strategy makes it clear that construction activity can continue as long as it complies with this guidance.

Please be assured that only sites that can operate within the guidelines are operational. All sites will remain under constant review. We have postponed all face-to-face engagement events and meetings and have put in place a number of channels to communicate with communities, such as letters and phone calls, as well as updates and alerts from each of the local community websites. You can sign up for regular updates in your local area at [www.hs2innorthants.co.uk](http://www.hs2innorthants.co.uk)

### What will be doing?

We are continuing our established programme of bat tree surveys. This will identify any future works to remove the required trees along the line of route in the coming months based upon the survey data.

Ahead of any tree felling works we need to undertake a series of surveys in accordance with the ecological seasonal calendar.

To enable this to happen safely we will need to have a full road or a lane closure (traffic lights) between 09.30am until 3.30pm. This is to allow ecologists to safely observe and where necessary climb roadside trees to check for habitat. The programme of traffic management locations are below

### Full Road Closures

Boddington Road - 17, 18 and 31 May 2021

Culworth Road - 19 May 2021 and 2 June 2021

**If you have a question about HS2 or our works, please contact our HS2 Helpdesk team on 08081 434 434 or email [hs2enquiries@hs2.org.uk](mailto:hs2enquiries@hs2.org.uk)**

### Duration of works

We will be closing the following roads;

#### Boddington Road

17, 18, and 31 May 2021

#### Culworth Road

19 May 2021

#### Claydon Road

2 June, 16 June 2021

There will be a rolling lane closure on the following roads;

#### Welsh Road and Byfield Road

2 June, 16 June 2021

### Off peak hours:

9.30am – 3.30pm

Our contractors may also be on site for one hour's start-up and shutdown outside of these times.

### What to expect

Some additional traffic on local roads.

Delays to your journey

# Notice of short duration road/lane closures and diversion routes, Boddington

[www.hs2.org.uk](http://www.hs2.org.uk)

Notification



## What will we be doing continued,

### Full Road Closures

Claydon Road - 2 and 16 June 2021

The roads will be open as usual outside of these hours.

### Rolling Lane Closure with traffic lights

Welsh Road - 2 and 16 June 2021

Byfield Road - 2 June and 16 June 2021

Details of the road or lane closures and diversion routes can be found on the maps enclosed.

To notify road users of the upcoming road closure, verge advance warning signs will be erected.

The diversion signage will be in place and operated during the working hours described, however road closed signs will be removed when non-working hours resume. These signs will be mounted on standard A frames and secured with ballasted sandbags.

The diversion routes for the road closure can be viewed on the next page or alternatively they can be found at [www.hs2innorthants.co.uk](http://www.hs2innorthants.co.uk)

## How may this affect you?

We will be working hard to ensure any impacts on residents are kept to a minimum during these and all our future works. You may notice a little extra traffic on the road immediately around the sites with workers and delivery vehicles moving to and from the site. There may be some noise from the machinery. All machinery will be restricted to running between the hours of 8am to 6pm.

For this stage of works we will not be closing any Public Rights of Way.

For further updates about these works and HS2 in general, please visit [www.hs2innorthants.co.uk](http://www.hs2innorthants.co.uk) where you can sign up to news alerts.

# Notice of short duration road/lane closures and diversion routes, Boddington

Notification



[www.hs2.org.uk](http://www.hs2.org.uk)

Location of Boddington Road closure and diversion route  
17, 18 and 31 May 2021



Contact our HS2 Helpdesk team on **08081 434 434**

# Notice of short duration road/lane closures and diversion routes, Boddington

Notification



[www.hs2.org.uk](http://www.hs2.org.uk)

**Location of Culworth Road closure and diversion route  
19 May and 2 June 2021**



Contact our HS2 Helpdesk team on **08081 434 434**

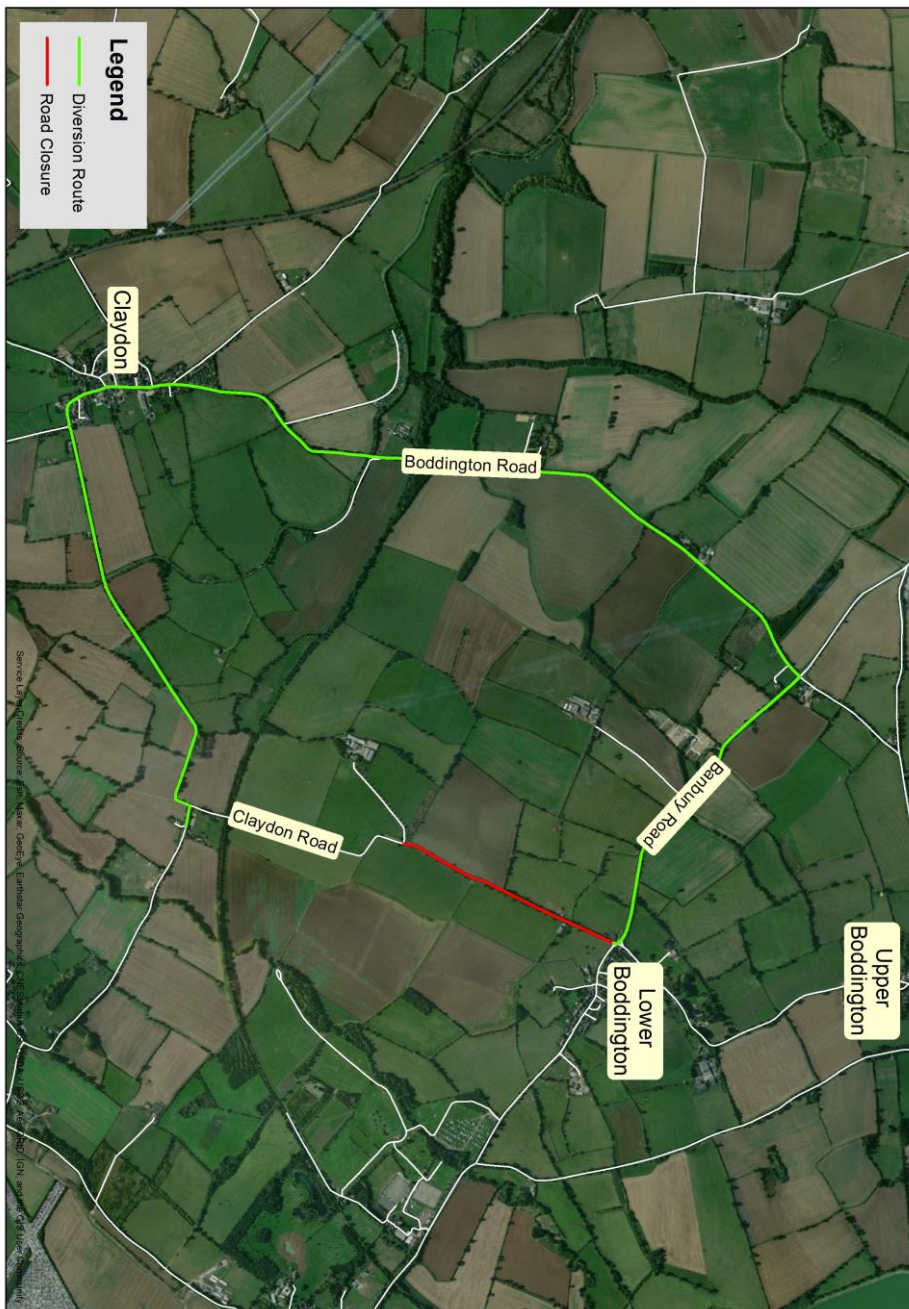
# Notice of short duration road/lane closures and diversion routes, Boddington

Notification



[www.hs2.org.uk](http://www.hs2.org.uk)

Location of Claydon Road closure and diversion route  
2 and 16 June 2021



Contact our HS2 Helpdesk team on **08081 434 434**

# Notice of short duration road/lane closures and diversion routes, Boddington

Notification



[www.hs2.org.uk](http://www.hs2.org.uk)

Six locations for the rolling lane closure with traffic lights – Welsh Road and Byfield Road, 2 and 16 June 2021 (first 4 locations below)



Contact our HS2 Helpdesk team on [08081 434 434](tel:08081434434)

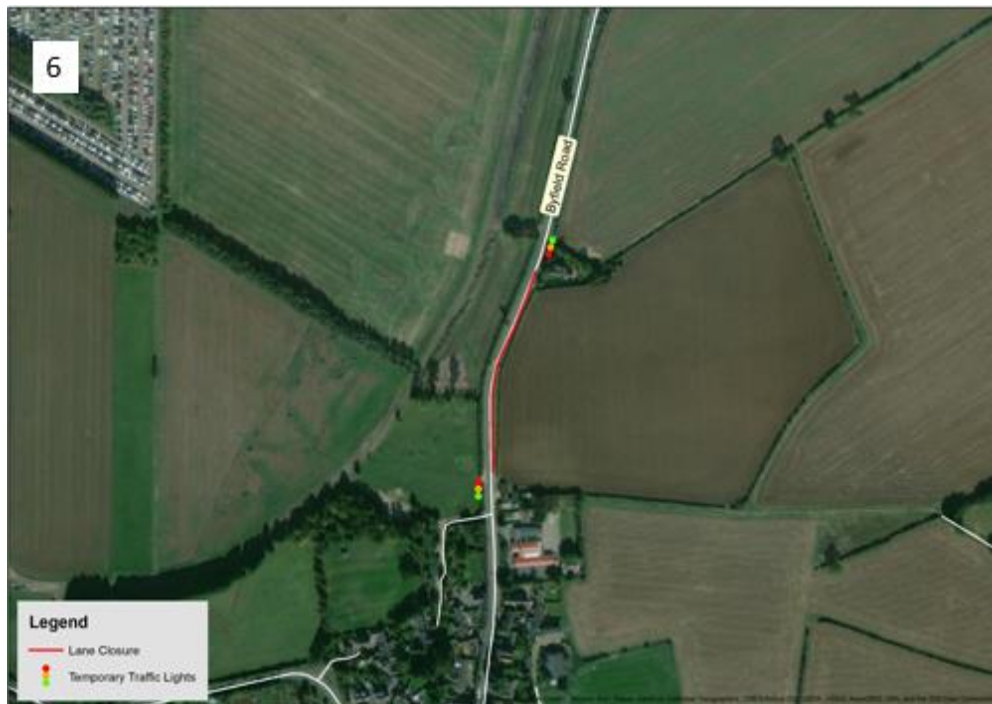
# Notice of short duration road/lane closures and diversion routes, Boddington

Notification



[www.hs2.org.uk](http://www.hs2.org.uk)

Six locations for the rolling lane closure with traffic lights – Welsh Road and Byfield Road, 2 and 16 June 2021 (last 2 locations below)



Contact our HS2 Helpdesk team on [08081 434 434](tel:08081434434)

# Keeping you informed

We are committed to keeping you informed about work on HS2. This includes ensuring you know what to expect and when to expect it, as well as how we can help.

## Residents' Charter and Commissioner

The Residents' Charter is our promise to communicate as clearly as we possibly can with people who live along or near the HS2 route. [www.gov.uk/government/publications/hs2-residents-charter](http://www.gov.uk/government/publications/hs2-residents-charter)

We also have an independent Residents' Commissioner whose job is to make sure we keep to the promises we make in the Charter and to keep it under constant review. Find reports at: [www.gov.uk/government/collections/hs2-ltd-residents-commissioner](http://www.gov.uk/government/collections/hs2-ltd-residents-commissioner)

You can contact the Commissioner at: [residentscommissioner@hs2.org.uk](mailto:residentscommissioner@hs2.org.uk)

## Construction Commissioner

The Construction Commissioner's role is to mediate and monitor the way in which HS2 Ltd manages and responds to construction complaints. You can contact the Construction Commissioner by emailing: [complaints@hs2-cc.org.uk](mailto:complaints@hs2-cc.org.uk)

## Property and compensation

You can find out all about HS2 and properties along the line of route by visiting: [www.gov.uk/government/collections/hs2-property](http://www.gov.uk/government/collections/hs2-property)  
Find out if you're eligible for compensation at: [www.gov.uk/claim-compensation-if-affected-by-hs2](http://www.gov.uk/claim-compensation-if-affected-by-hs2)

## Holding us to account

If you are unhappy for any reason you can make a complaint by contacting our HS2 Helpdesk team. For more details on our complaints process, please visit our website: [www.hs2.org.uk/how-to-complain](http://www.hs2.org.uk/how-to-complain)

## Contact Us

Contact our HS2 Helpdesk team all day, every day of the year on:

 Freephone **08081 434 434**

 Minicom **08081 456 472**

 Email **[hs2enquiries@hs2.org.uk](mailto:hs2enquiries@hs2.org.uk)**

Write to:

**FREEPOST**

**HS2 Community Engagement**

Website **[www.hs2.org.uk](http://www.hs2.org.uk)**

To keep up to date with what is happening in your local area, visit: **[www.hs2inyourarea.co.uk](http://www.hs2inyourarea.co.uk)**

**Please contact us if you'd like a free copy of this document in large print, Braille, audio or easy read. You can also contact us for help and information in a different language.**

HS2 Ltd is committed to protecting personal information. If you wish to know more about how we use your personal information please see our Privacy Notice <https://www.gov.uk/government/publications/high-speed-two-ltd-privacy-notice>

**Reference number: FUS\_AWN\_0206**

**HS2-EW-Fusion -Ph1-Ar-Ce-C3-Traf-23-26/04/2021**

High Speed Two (HS2) Limited, registered in England and Wales.

Registered office: Two Snowhill, Snow Hill Queensway, Birmingham B4 6GA.

Company registration number: 06791686. VAT registration number: 888 8512 56.