

Notice of utility diversion works Calvert

April 2021 | www.hs2.org.uk

High Speed Two (HS2) is the new high speed railway for Britain. We are continually reviewing the works on our construction sites in line with Government and Public Health England (PHE) advice on dealing with COVID-19. The Government's current strategy makes it clear that construction activity can continue as long as it complies with this guidance. Please be assured that only sites that can operate within the guidelines are operational. All sites will remain under constant review. We have postponed all face-to-face engagement events and meetings and have put in place a number of channels to communicate with communities, such as letters and phone calls, as well as updates and alerts from each of the local community websites. You can sign up for regular updates in your local area at www.hs2inbucksandox.co.uk

Why are we carrying out these works?

Ahead of the main works construction of the railway, the existing Calvert Road rail overbridge requires demolishing and then rebuilding. This bridge contains a number of existing utility services that require diverting under the HS2 railway and the existing railway line. This will be achieved using a construction technique called horizontal directional drilling. This avoids large open excavations and allows an undertrack crossing, (UTX) to be delivered with the least disruption.

There will be two banks of utility crossing corridors located to the south of Calvert Road, drilled towards Brackley Lane. Each bank will contain five horizontal drilling bores to allow each of the ten utility services to be diverted through. (See image enclosed in this notification)

These works will be delivered over five phases of work:

- Phase 1: Site establishment set up on Calvert Road and Brackley Lane
- Phase 2: Horizontal directional drilling
- Phase 3: Diversion and connections of utilities along Werner Terrace, Brackley Lane and Calvert Road
- Phase 4: Connections, testing and commissioning
- Phase 5: Demobilisation from site

If you have a question about HS2 or our works, please contact our HS2 Helpdesk team on 08081 434 434 or email hs2enquiries@hs2.org.uk

Notification



Duration of works

The works are due to start 19 April 2021 and will continue until Spring 2022.

Working hours:

Monday to Friday

8am – 8pm

Saturday 8am – 6pm

Sunday 9am – 4pm

Extended working hours subject to local authority consent

Our contractors may be on site for one hour's start-up and shut down either side of these works

What to expect

Temporary traffic signals

Horizontal directional drilling

What we will do

Manage any environmental impacts, such as traffic and noise

Respond promptly to any complaints and take appropriate action

Take care to respect your community

Notice of utility diversion works Calvert

Notification



www.hs2.org.uk

Phase 1: site establishment set up on Calvert Road and Brackley Lane: (Mid - April to the end of May 2021)

During the first phase of works, we need to establish a works compound on the east side of the existing railway line which will be accessed from the Calvert Road existing highway entrance. Temporary fencing will be erected around the compound area and drilling 'launch' points. Track matting will be laid across the work area.

Two temporary bell mouth highway entrances will also be constructed on Brackley Lane, for the north and south drilling site 'receptor' compounds. These receptor areas are the locations where the drilling works will emerge. The receptor sites will include a small storage area, welfare facilities and a vehicle turning area. The bell mouths will be constructed with a sealed surface entrance which will lead from the highway into the reception pit areas. Track matting will be laid within the compound areas.

During the construction of the bell mouths, Anglian Water will be in the area to undertake preparation works for the later connections of the clean and foul water supply diversions. Residents will be notified of these works and any disruption to services directly by Anglian Water.

To create the bell mouth entrances, three way temporary traffic lights will be in operation 24/7 during these construction works. Once these entrances are completed the temporary traffic lights will be removed. However, to facilitate the safe movement of larger vehicles entering and exiting from the site compounds on Brackley Lane we will use a 'Stop works sign' marshal who will temporarily hold the traffic to allow for the safe passage of vehicles onto the highway.

Once the temporary bell mouth entrances have been established, temporary hoardings, fencing and acoustic blankets will be erected around both of the compounds on Brackley Lane and around the drive chamber sites. The hoarding will also be used as visual screening to the works from the highway. The compound sites will be secured by 24/7 security and have temporary level low level lighting.

Settlement tanks will be installed at the compound on Calvert Road for the filtration of the drilling arisings and the drilling fluid during drilling operations. The tanks will be emptied as required by small waste removal trucks and will be disposed of at a licensed waste disposal facility.

Contact our HS2 Helpdesk team on **08081 434 434**

Notice of utility diversion works Calvert

Notification



www.hs2.org.uk

Location map showing Brackley Lane (Receptor) and Calvert Road (Launch) compounds



Contact our HS2 Helpdesk team on **08081 434 434**

Notice of utility diversion works Calvert

Notification



www.hs2.org.uk

Location map showing temporary traffic lights during
Site bell mouth construction – Phase 1



Contact our HS2 Helpdesk team on **08081 434 434**

Notice of utility diversion works Calvert

www.hs2.org.uk

Phase 2: Horizontal Directional Drilling May to Mid-November 2021

The start of the drilling works will take place from the Calvert Road compound on the east side of the railway line where a drilling rig will be set up. The drilling rig will drill ten direction drill bores, five from each 'launch' pit site.

	<u>Working Hours</u>	<u>Notes</u>
Weekday	8am to 8pm	Required for all 10 drills
Saturday	8am to 6pm	Required for 6 drills
Sunday	9am to 4pm	Required for 6 drills

Extended working hours after 6pm weekdays and weekends beyond Saturday 1pm subject to local authority consent.

Extended working hours are required to prevent collapse of the drilling bore, allowing the drills to be progressively enlarged in diameter during each drilling operation. The largest drilling bores are 60cm in diameter. We have a total of six bores of this diameter which require six instances of weekend working over the course of the drilling programme to complete. This weekend working will be staggered over the May to November drilling period. Successive weekend drilling operations will not be undertaken.

There will be two banks of utility crossing corridors located on Brackley Lane, where each bank will contain five horizontal drilling bores to allow the utility services to be diverted through. Drilling operations will only take place at one of the crossing corridors at a time. We are planning to begin the works at the southern corridor and then progress to the northern location on Brackley Lane. Please see location map enclosed.

Excavated material will be removed from the entry pit and receiving pits. The excavated sub soil from the pits will be stored off-site until required for backfilling the areas.

During the drilling works the noise will be monitored and controlled.

Once all drilling works are complete, all associated equipment for this activity will be taken away from site.

Notification



Notice of utility diversion works Calvert

www.hs2.org.uk

Notification



What is horizontal directional drilling?

Horizontal directional drilling is a recognised and common method of installing underground pipelines and cables beneath existing roads and train tracks. It involves the use of a directional drilling machine to accurately drill along the new diversion route. The new pipes will be drilled from the entry point and will follow the underground diversion route. A pipe will then be pulled through the drilled hole to the opposite side. During the drilling process, the drill will be circulated with water and earth based materials mixed together (slurry) to ensure that the drilling bore is kept open and lubricated. All necessary environmental consents have been gained for this operation.

The drilling rig will be located at the drive entrance pit which will be situated at the site compound on Calvert Road, along with associated equipment and space for tanks/ vehicles to provide lubrication water and processing of the liquid slurry. The area will also include storage and welfare facilities. The pipe sleeves for the drilling bores will be assembled on the east side and pulled through the completed bore by a second rig on the receptor site. This approach avoids having sleeving pipes delivered down Brackley Lane reducing disruption to residents. The second rig will also assist with the drilling rod disassembly at the receptor sites and is a quieter alternative to an excavator. The sleeving will be pulled through at the completion of each drill being at the required diameter. The sleeve will then be 'grouted' into position, the grout taking up the gap between the sleeve and the drilled ground.

On the eastern launch pit site there will also be working space which is required to carry out welding activities to the pipeline in order that the pipe is pulled through the drilled hole. The area will also include welfare facilities.

How does horizontal directional drilling work?

Stage 1 -The drill bit is connected to a rotating shaft and pushed into the ground at the entry point to the new diversion. It is then guided through the ground until it emerges on the opposite side at the new location. Finally, the drill bit will exit the borehole at the exit point.

Stage 2 - A reaming tool is then attached to the drill pipe and pulled back through the hole. Larger reaming tools are pulled back and forth through the borehole until the hole is about one and a half times the size of the pipe that will be installed.

Notice of utility diversion works Calvert

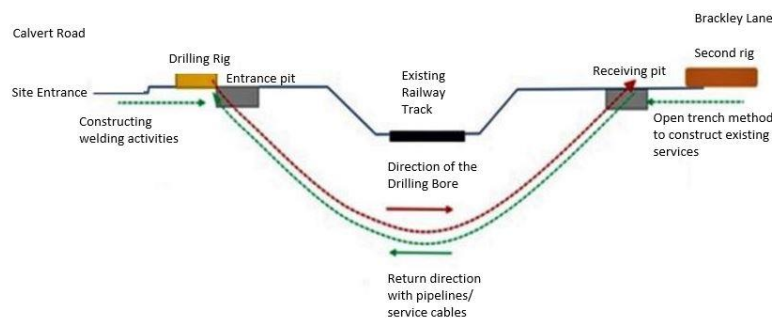
www.hs2.org.uk

Notification



Stage 3 – Plastic pipes are brought to the entry point and welded or fused together, coated and pressure-tested before it is pulled through the drilled hole.

Below shows the method for horizontal directional drilling



Below shows a typical horizontal directional drilling rig



Contact our HS2 Helpdesk team on **08081 434 434**

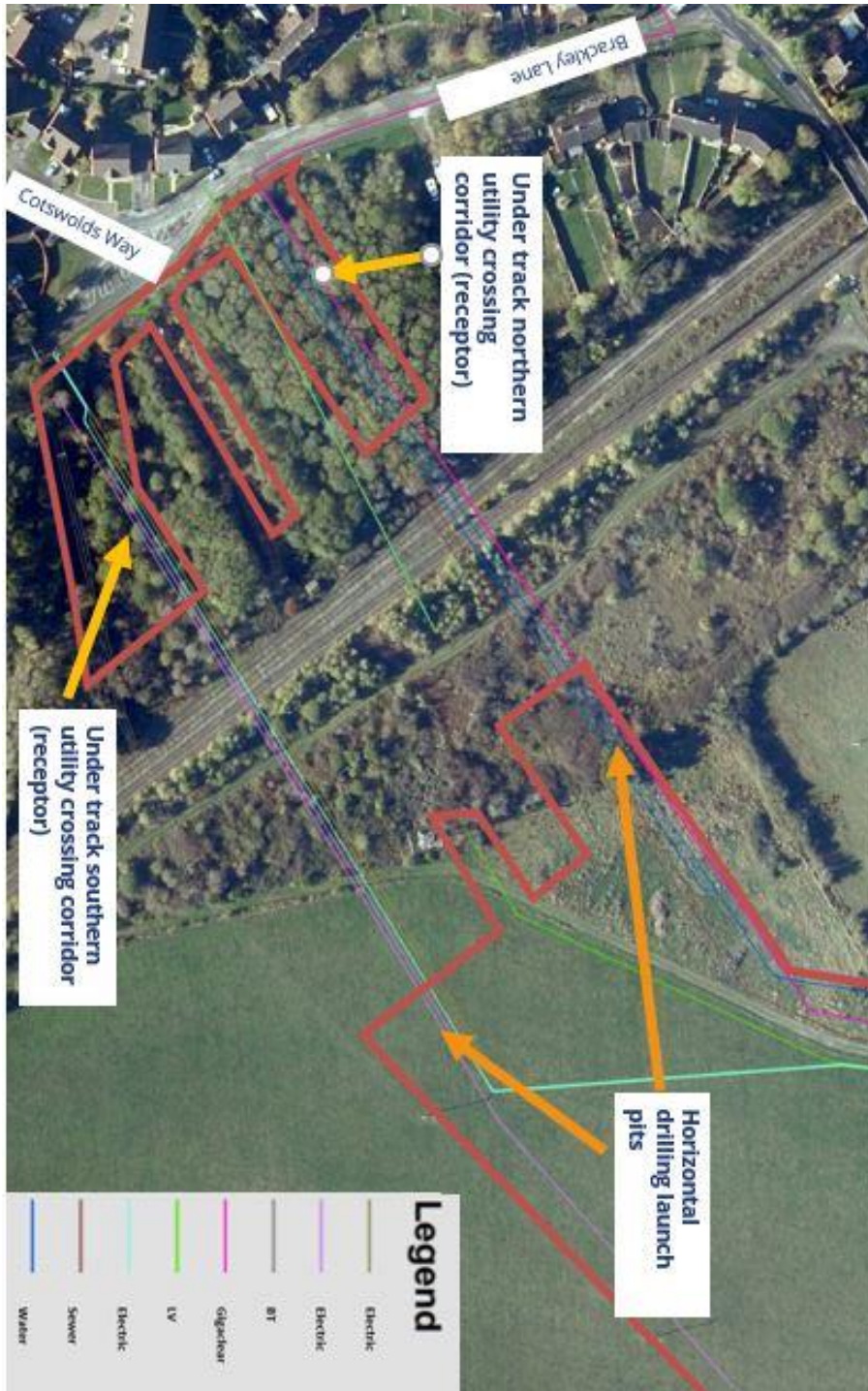
Notice of utility diversion works Calvert

Notification



www.hs2.org.uk

Map showing the horizontal directional drilling launch pits and receptor pits



Contact our HS2 Helpdesk team on **08081 434 434**

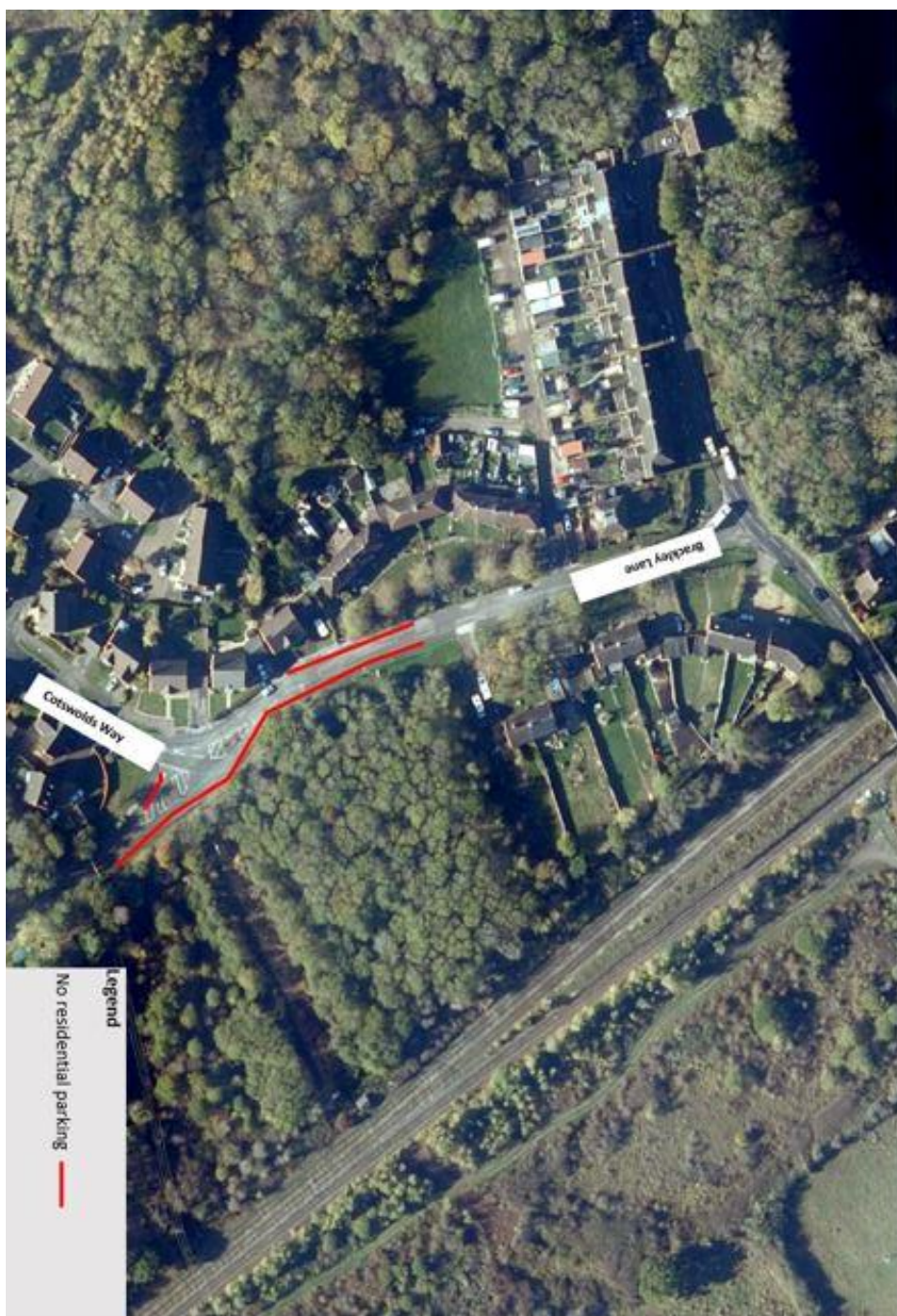
Notice of utility diversion works Calvert

Notification



www.hs2.org.uk

Parking restrictions in place during phase 2 horizontal directional drilling to allow construction vehicle access to the receptor site areas



Contact our HS2 Helpdesk team on **08081 434 434**

Notice of utility diversion works Calvert

www.hs2.org.uk

Notification



Phase 3: Diversion and connections of utilities along Werner Terrace, Brackley Lane and Calvert Road

(November to December 2021) (Subject to consents)

Diversion of the existing underground services shall be carried out using an open trench method using temporary support to the trenches. To undertake this works safely we will close Brackley Lane in two halves, the southern half excavated and reinstated first and then closure of the remaining section. The utilities will be diverted along the highway in two phases.

We are continuing to develop our programme of works for this phase and we will write to you later this year to provide further details ahead of the anticipated works commencing in November 2021.

Phase 4: Connections, testing & commissioning

(January to February 2022)

The new utility diversions will be connected and tested by each relevant utility provider. Once all utilities have completed this process they will be then commissioned, we will then reinstate the highway. We will keep you updated on this works closer to the time.

Phase 5: Demobilisation from site

(March 2022)

Once all works are completed, all plant and materials will be removed and the area will be reinstated. This will include the removal of the temporary bell mouths on Brackley Lane. We will keep you updated on this works closer to the time.

Notice of utility diversion works Calvert

Notification



www.hs2.org.uk

How will the utilities works affect you?

You may notice extra traffic on the roads due to workforce and equipment in the area. HS2 construction traffic HGV's will not access through the Cotswolds Way estate of Calvert. All vehicles of 7.5 tonnes or greater making deliveries to the site for the compounds will go along The Broadway from the A41 along Perry Hill/ Gawcott Road/ Werner Terrace to Brackley Lane and Calvert Road.

We will be closely monitoring the roads around the site for dust and regular road sweeping will take place. We will take measures to ensure we keep mud off the local roads, such as cleaning dirty vehicles before they leave work areas.

Our modern reduced noise working methods will be monitored for noise. We will work within the limits approved in our noise consent from the local authority.

Traffic management

During the construction of the bell mouth entrances on Brackley Lane, there will be temporary traffic management in place, in the form of three way traffic lights. The lights will be in operation 24/7 including weekends which will take place over a three week period. Whilst the lights are in operation there will be restricted residential parking on the highway.

When we have constructed the bell mouth entrances on Brackley Lane, to facilitate the safe movement of larger vehicles entering and exiting from the site compounds, we will use a 'Stop works sign' which will temporarily hold the traffic to allow for the safe passage of vehicles onto the highway.

Public rights of way

To undertake these works we will need to close the public rights of way SCL/12/1 for the duration of the works. The public right of way is located by the HS2 Calvert Road compound.

Notice of utility diversion works Calvert

www.hs2.org.uk

Virtual Exhibition

Due to COVID-19 we are not currently able to hold face-to-face public events. Instead we are also providing a Virtual Exhibition of these works.

The exhibition can be found at www.hs2inbucksandbox.co.uk and will be open for the duration of the works.

The virtual exhibition provides further provides further information on the works in the form of phasing plans and the programme of works.

Join our online events to find out more

We are also holding an online meeting to share information about these utility diversion works and the concrete batching plant works EKFB are undertaking. The online 'webinar' has been set up to give the community an opportunity to hear and question us about the works.

Our team of specialists will provide a presentation on the works and will be able to answer questions during the event. Please note that these are guided presentations.

Registration for the webinar will be available from at the local website, <https://www.eventbrite.co.uk/e/hs2-fusion-brackley-lane-and-surrounding-area-calvert-community-update-tickets-148025483205>

The event will be held on the following date:

Thursday 8 April 2021 6pm-7pm

Notification



Keeping you informed

We are committed to keeping you informed about work on HS2. This includes ensuring you know what to expect and when to expect it, as well as how we can help.

Residents' Charter and Commissioner

The Residents' Charter is our promise to communicate as clearly as we possibly can with people who live along or near the HS2 route.
www.gov.uk/government/publications/hs2-residents-charter

We also have an independent Residents' Commissioner whose job is to make sure we keep to the promises we make in the Charter and to keep it under constant review. Find reports at:
www.gov.uk/government/collections/hs2-ltd-residents-commissioner

You can contact the Commissioner at:
residentscommissioner@hs2.org.uk

Construction Commissioner

The Construction Commissioner's role is to mediate and monitor the way in which HS2 Ltd manages and responds to construction complaints. You can contact the Construction Commissioner by emailing:
complaints@hs2-cc.org.uk

Property and compensation

You can find out all about HS2 and properties along the line of route by visiting:
www.gov.uk/government/collections/hs2-property
Find out if you're eligible for compensation at:
www.gov.uk/claim-compensation-if-affected-by-hs2

Holding us to account

If you are unhappy for any reason you can make a complaint by contacting our HS2 Helpdesk team. For more details on our complaints process, please visit our website:
www.hs2.org.uk/how-to-complain

Contact Us

Contact our HS2 Helpdesk team all day, every day of the year on:

 Freephone **08081 434 434**

 Minicom **08081 456 472**

 Email **hs2enquiries@hs2.org.uk**

Write to:

FREEPOST

HS2 Community Engagement

Website **www.hs2.org.uk**

To keep up to date with what is happening in your local area, visit:
www.hs2inyourarea.co.uk

Please contact us if you'd like a free copy of this document in large print, Braille, audio or easy read. You can also contact us for help and information in a different language.

HS2 Ltd is committed to protecting personal information. If you wish to know more about how we use your personal information please see our Privacy Notice
<https://www.gov.uk/government/publications/high-speed-two-ltd-privacy-notice>

Reference number: FUS_AWN_0201 HS2-EW-Fusion -Ph1-Ar-Ce-C2-UT-20-30/03/2021

High Speed Two (HS2) Limited, registered in England and Wales.
Registered office: Two Snowhill, Snow Hill Queensway, Birmingham B4 6GA.
Company registration number: 06791686. VAT registration number: 888 8512 56.