

Wendover notice of demolition preparation and vegetation clearance

March 2021 | www.hs2.org.uk

High Speed Two (HS2) is the new high speed railway for Britain. We are continually reviewing the works on our construction sites in line with Government and Public Health England advice dealing with COVID-19. The Government's current strategy makes it clear that construction activity can continue as long as it complies with this guidance. Only sites operating within the guidelines are operational. All sites remain under constant review. We have postponed all face-to-face engagement and have put in place various channels to communicate with communities, such as letters, phone calls, local community websites updates. You can sign up for regular updates at www.hs2inbucksandox.co.uk

What will we be doing?

As part of our continuing works ahead of the construction of the railway we need to undertake some further work in your area, these works will consist of:

- Set up a temporary site compound
- Utility surveys and boundary fencing
- Preparation works
- Demolition preparation
- Bat surveys / mitigation
- Vegetation clearance

Site compound

To undertake the work at Road Barn Farm we need to construct a temporary compound. Please see enclosed map. To construct this compound we will initially use mobile welfare facilities. Once built, the compound will include:

- Temporary trackway matting
- Office and welfare facilities, machinery and materials storage
- Car parking and 24-hour security with temporary low level lighting

For the works at Durham Farm we will use the existing compound.

If you have a question about HS2 or our works, please contact our HS2 Helpdesk team on 08081 434 434 or email hs2enquiries@hs2.org.uk

Notification



Duration of works

Works will start in March 2021 and will continue until Spring 2021

Normal working hours:

Monday to Friday 8am – 6pm

Saturday 8am – 1pm

Our contractors will be on site for one hour's start-up and shut down either side of these times.

What to expect

Slight additional traffic on local roads.

Noise from the equipment used for the works.

Site storage and welfare vehicle operated with 24hr security and low level lighting.

Traffic management signage near our site entrance.

What we will do

Manage any impacts, such as traffic and noise with the aim of reducing or removing them.

Wendover notice of demolition preparation and vegetation clearance

www.hs2.org.uk

Notification



Utility surveys and boundary fencing

The utility surveys will involve the use of non-intrusive ground radar scanning of the area to detect the location of any services underground ahead of the fencing installation. Boundary and security fencing will be installed around the works areas.

Preparation works

A small workforce will use machinery and hand-held equipment to trim small areas of hedgerow and foliage around the access points and areas necessary for the initial building investigation and soft strip works.

Demolition preparation

Ahead of the railway construction works we need to safely prepare buildings for later demolition. These buildings are located at Road Barn Farm and Durham Farm. This will consist of the removal of roof tiles and internal fixtures. All appropriate materials identified in the pre-demolition survey will be recycled.

How may this affect you?

Two-way temporary traffic lights will be positioned on the A413 London Road to assist with the initial work site mobilisation for Road Barn Farm. This will be in place for up to 3 days from 10 March to 12 March. The traffic lights will operate between 9:30am and 3:30pm. Outside of these times the A413 will operate as normal. Please see the enclosed map.

Access to the established Durham Farm compound will continue to use the A413, accessing directly via Bowood Lane.

Bat surveys, bat mitigation and vegetation clearance

Part of the work at Road Barn Farm involves some localised vegetation clearance. The works will be supervised by an Ecologist who will be present on site and provide the appropriate approvals (for all protected species) prior to works commencement. Should any signs of bat roosts or other ecology be found, such as nesting birds, the vegetation will be left undisturbed with the appropriate buffer zone established until further surveys and mitigation is established to confirm that the ecology is no longer present. Identified bat roosts will be felled under licence and will follow the stated licence methodology.

Wendover notice of demolition preparation and vegetation clearance

www.hs2.org.uk

Notification



How will you ensure that you do not affect nesting birds and other protected and non-protected ecology?

Prior to any vegetation removal, an ecologist will survey the area to be cleared for ecology and record any findings.

Any vegetation that cannot be removed due to the presence of protected ecology will be left until further surveys confirm that the ecology is no longer present.

The vegetation clearance will be undertaken in accordance with:

HS2 Organisational European Protected Species Great for Crested Newt Licences WML025.

Licensing applications to Natural England including bats

Further details are available online.

<https://www.gov.uk/government/publications/hs2-phase-oneenvironmental-statement-volume-5-ecology>

The work on HS2 is guided by High-Speed Rail (LondonWestMidlands) Act 2017.

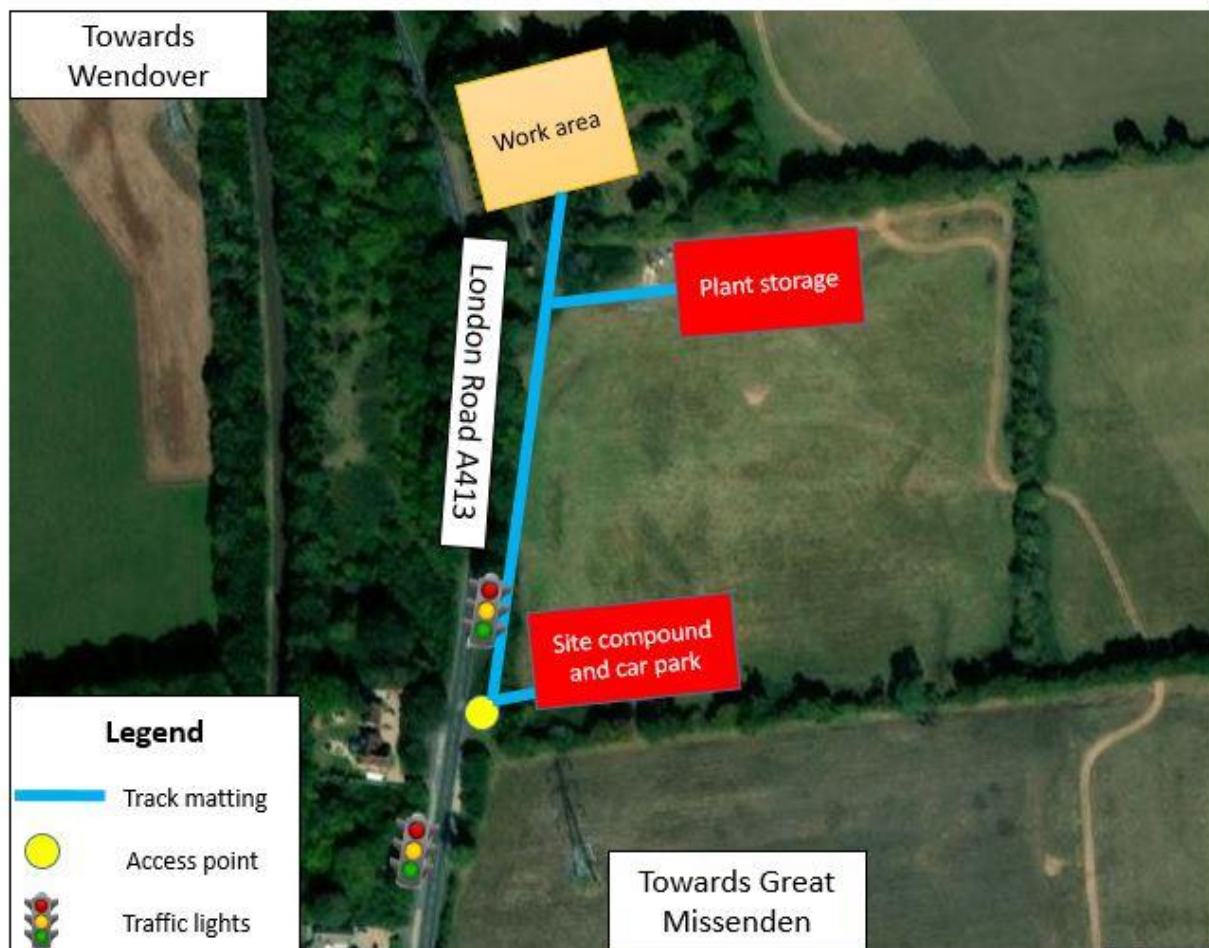
<http://www.legislation.gov.uk/ukpga/2017/7/contents/enacted>.

Wendover notice of demolition preparation and vegetation clearance

www.hs2.org.uk

Work site map for Road Barn Farm

Notification



Contact our HS2 Helpdesk team on **08081 434 434**

What else is happening in your area?

www.hs2.org.uk

Contact our new HS2 Helpdesk team

Our new Helpdesk team is based in our Head Office in Birmingham. This is so that we can provide you with the best service possible. Our team is here to listen and respond to your enquiry, complaint or feedback to help us be a good neighbour.

You can contact our Helpdesk team all day, every day of the year on:

Freephone: **08081 434 434**

Minicom: **08081 456 472**

Email: hs2enquiries@hs2.org.uk

Keep up-to-date with your local community website

To find out more about what's happening in your area and receive regular email updates, you can sign up to our local community websites at: www.hs2inyourarea.co.uk.

About our Community and Business Funds

We are offering two funds that are available to local communities and businesses between the West Midlands and London, to help with the disruption caused by our construction work. These are the Community and Environment Fund (CEF) and the Business and Local Economy Fund (BLEF).

The CEF is designed to give communities the opportunity to share in the benefits of HS2. It is an allocated fund that communities are able to apply for, to help to support local projects that aim to improve their local area.

The BLEF is designed to support local economies that may be disrupted by the construction of HS2. BLEF grants are for local business support organisations and local authorities to help maintain business activity in local communities.

For more information about each of these funds, including how to apply, please visit: <https://www.groundwork.org.uk/hs2funds>

Keeping you informed

We are committed to keeping you informed about work on HS2. This includes ensuring you know what to expect and when to expect it, as well as how we can help.

Residents' Charter and Commissioner

The Residents' Charter is our promise to communicate as clearly as we possibly can with people who live along or near the HS2 route.
www.gov.uk/government/publications/hs2-residents-charter

We also have an independent Residents' Commissioner whose job is to make sure we keep to the promises we make in the Charter and to keep it under constant review. Find reports at:
www.gov.uk/government/collections/hs2-ltd-residents-commissioner

You can contact the Commissioner at:
residentscommissioner@hs2.org.uk

Construction Commissioner

The Construction Commissioner's role is to mediate and monitor the way in which HS2 Ltd manages and responds to construction complaints. You can contact the Construction Commissioner by emailing:
complaints@hs2-cc.org.uk

Property and compensation

You can find out all about HS2 and properties along the line of route by visiting:
www.gov.uk/government/collections/hs2-property
Find out if you're eligible for compensation at:
www.gov.uk/claim-compensation-if-affected-by-hs2

Holding us to account

If you are unhappy for any reason you can make a complaint by contacting our HS2 Helpdesk team. For more details on our complaints process, please visit our website:
www.hs2.org.uk/how-to-complain

Contact Us

Contact our HS2 Helpdesk team all day, every day of the year on:

 Freephone **08081 434 434**

 Minicom **08081 456 472**

 Email **hs2enquiries@hs2.org.uk**

Write to:

FREEPOST

HS2 Community Engagement

Website **www.hs2.org.uk**

To keep up to date with what is happening in your local area, visit:
www.hs2inyourarea.co.uk

Please contact us if you'd like a free copy of this document in large print, Braille, audio or easy read. You can also contact us for help and information in a different language.

HS2 Ltd is committed to protecting personal information. If you wish to know more about how we use your personal information please see our Privacy Notice
<https://www.gov.uk/government/publications/high-speed-two-ltd-privacy-notice>

Reference number: FUS_AWN_0185

HS2-EW-Fusion -Ph1-Ar-Ce-C2-Eco-5-03/03/2021

High Speed Two (HS2) Limited, registered in England and Wales.

Registered office: Two Snowhill, Snow Hill Queensway, Birmingham B4 6GA.

Company registration number: 06791686. VAT registration number: 888 8512 56.