



Enabling Works at HS2

HS2

HS2 is a new, state-of-the-art, high-speed railway currently being built between London, Birmingham, Leeds and Manchester. It is one of the largest and most complex infrastructure projects ever undertaken in the UK and it will use the best of British skills and innovation. **Let's meet the team who are completing the enabling works and preparing the ground for construction.**

Ecologist

Feeling green? Us Ecologists are a vital part of the HS2 team, and we work to minimise the impact of construction on plants, animals and the environment. We study the habitats on and around the sites where we plan to build, and work with Civil Engineers to avoid, reduce or mitigate habitat disturbance.

As part of this process we are building a green corridor, which is a network of habitats built alongside HS2, including woodlands, meadows, wetlands and ponds.

These will replace and expand the majority of habitats affected or lost by the construction of HS2, while conserving and enhancing others. If you are passionate about wildlife and love Science and Geography, then this could be your ideal career.

Will



Archaeologist

As Archaeologists we research and assess the sites where HS2 plans to build and identify possible archaeological sites. Through our excavations we unearth remains and preserve the artefacts we find. By dating and interpreting what we find, we help to piece together our cultural history and add to the understanding of our past through the reports and publications we produce.

Our archaeology programme is the biggest ever in the UK. Since the work started, we have brought more than 10,000 years of history to the surface including tools, pottery, monuments and even an Iron Age crime scene! If you like solving the mysteries of the past this is the ideal job for you.

Neda

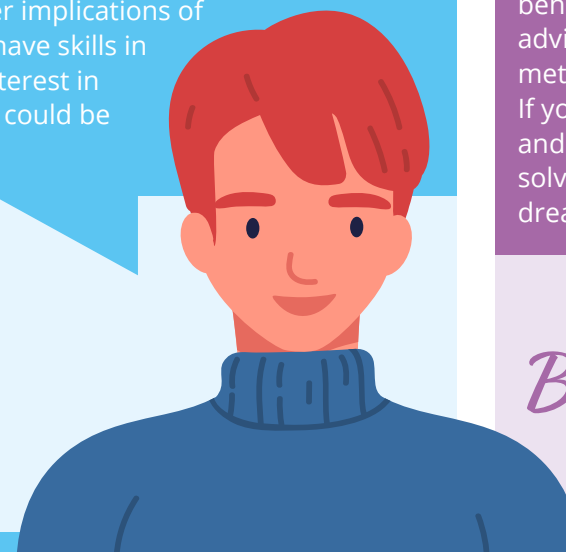


Geographic Information Systems (GIS) Co-ordinator

GIS Co-ordinators have a vital role in helping the rest of the team to access, navigate and analyse geographic information, which can exist as maps, photographs, measurements and other types of data.

Using specialist applications, we collate and overlay this data to create an interactive 'super map' that follows the footprint of HS2 and its surrounding area. This helps Civil Engineers to view and understand how the project will function within the landscape, and to calculate and analyse the wider implications of their designs. If you have skills in computing and an interest in Geography, then GIS could be the career for you.

Xavier



Geotechnical Engineer

As Geotechnical Engineers we combine our knowledge of engineering and geology to investigate the ground for any proposed construction works. We use the investigation results to design earthworks, ground improvement or foundations needed. Geotechnical Engineers are involved in the design and construction of anything interacting with the ground, including roads, railways, dams, earth retaining structures, bridge and building foundations, embankments and cuttings; we also investigate and manage landslides and failing slopes. We need to understand the behaviour and composition of the soils and rocks, to advise on the most suitable construction methods and materials for the site. If you are interested in Geology and like maths and problem-solving, then this could be your dream career.

Bhavani



Cross-Curricular Careers >>>>>

Few careers fit easily into one subject. Archaeology combines History and Engineering, whilst Geotechnical Engineering combines Engineering and Geography. **Combine your favourite subjects for the career of your dreams!**



Being an Apprentice

At HS2 we have many apprenticeship opportunities across many career areas. Find out about apprenticeship pathways into work:

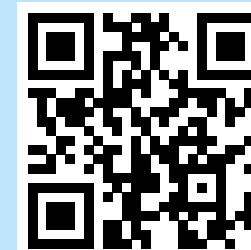
<https://www.hs2.org.uk/hs2-apprenticeship-journeys/>



Future You

Find out which HS2 career could be right for you:

<https://www.hs2.org.uk/future-you>



Join the Team

Find out about careers in the wider rail sector:

<https://routesintorail.org/>



Enabling Works at HS2

HS2



A journey of discovery like no other.

HS2 will leave a lasting skills legacy. We invest heavily in our people so we can develop and share best practice, innovation and excellence across a wide range of sectors.

<https://www.hs2.org.uk/building-hs2/archaeology/>



Designing Stations at HS2

HS2

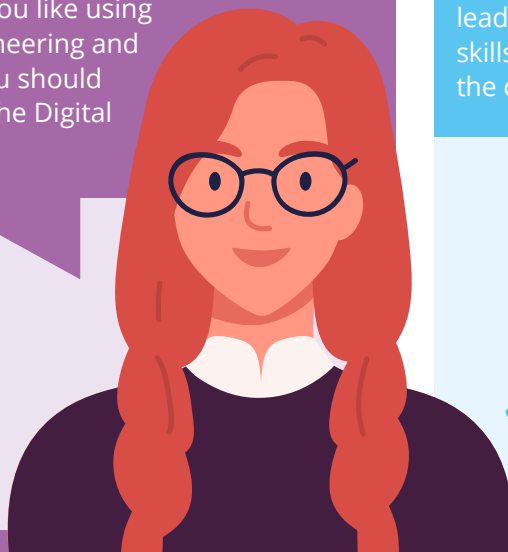
HS2 is a new, state-of-the-art, high-speed railway currently being built between London, Birmingham, Leeds and Manchester. It will serve over twenty-five stations connecting around thirty million people. **Let's meet the team of civil engineers and designers who are planning and designing these new stations.**

Building Information Modelling Technician

As Building Information Modelling (BIM) Technicians we use Computer-Aided Design (CAD) to model structures and buildings digitally in 3D. These models incorporate all of the information needed for the construction and maintenance of the structure.

Using digital models enables us to test out different materials and designs, simulate the construction process and even view models in virtual reality. Digital models can be easily shared between teams for collaborative working. If you like using CAD and like solving engineering and design problems, then you should think about joining us in the Digital Engineering team.

Geena



Civil Engineer

As Civil Engineers we oversee the design, construction and maintenance of infrastructure assets such as tunnels, bridges and railway stations. We also make sure that these projects are completed within budget, on time, sustainably and to the required quality.

Civil Engineers have many different roles at HS2. Senior Civil Engineers oversee large projects and make broad decisions that could affect the project as a whole. Junior Civil Engineers work on the design and engineering of specific assets, or on the initial preparation and surveying of a site. If you have leadership and problem-solving skills, civil engineering might be the career for you.

Lauren



Customer Experience Designer

As Customer Experience (CX) Designers at HS2 we are responsible for everything that a customer experiences when using the service, starting from the process of booking a train ticket to reaching their destination.

CX design involves making sure that every aspect of the experience is satisfying, modern and works well, taking into account the diverse needs of HS2's customers.

If you have an eye for design detail and are good at understanding other people's needs, then you should think about becoming a CX Designer.

Reuben



Urban Designer

Urban Designers research and design towns, cities and urban spaces. We are interested in how cities develop and function, and how we can make them more liveable and sustainable. We design road layouts, public squares and parks, connecting and creating the places that make up our towns and cities.

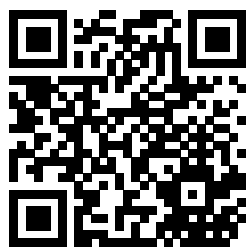
Working as an Urban Designer at HS2 involves integrating railway stations and other built assets into the urban environment and thinking about how they connect into the road system and other transport networks. This also involves designing the public spaces outside, including areas for recreation and leisure. If you like the idea of designing towns and cities, then Urban Design is the career for you.

Kwame



Routes into STEM >>>>>

There are many education routes into STEM careers, including graduate programmes, apprenticeships, vocational courses and academic qualifications. **Choose a route that suits how you like to learn.**



Being an Apprentice

At HS2 we have many apprenticeship opportunities across many career areas. Find out about apprenticeship pathways into work:

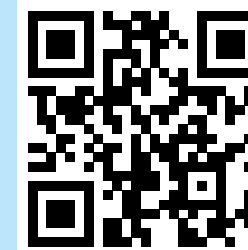
<https://www.hs2.org.uk/hs2-apprenticeship-journeys/>



Future You

Find out which HS2 career could be right for you:

<https://www.hs2.org.uk/future-you>



Join the Team

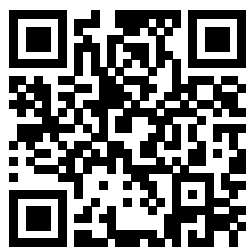
Find out about careers in the wider rail sector:

<https://routesintorail.org/>



Designing Stations at HS2

HS2



**THINK BIG. This is Europe's
largest infrastructure project.**

Our project is ground breaking and we apply the same principles in
our commitment and approach to recruiting and retaining our people.

<https://www.hs2.org.uk/design-vision/>



Construction Careers at HS2

HS2

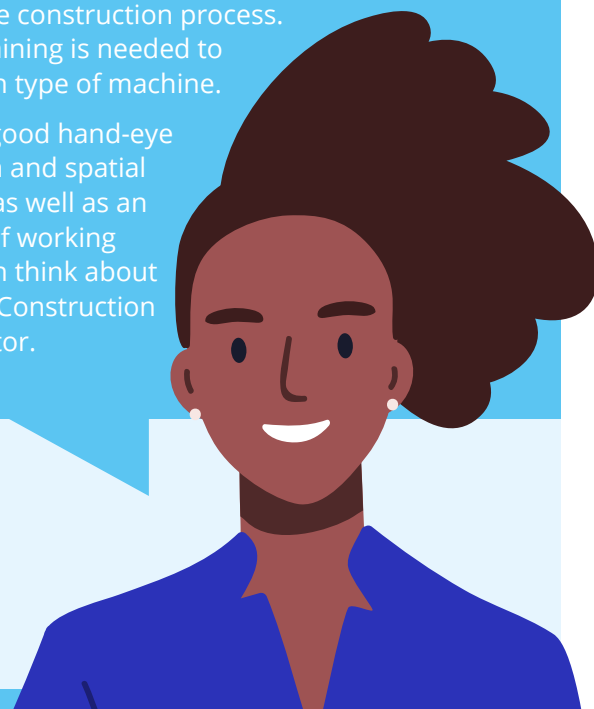
HS2 is a new, state-of-the-art, high-speed railway currently being built between London, Birmingham, Leeds and Manchester. It is one of the largest and most complex infrastructure projects ever undertaken in the UK and it will be built using innovative technology and world-leading construction techniques. **Let's meet the construction team.**

Construction Plant Operative

As Construction Plant Operatives we drive and operate the heavy machinery that is used to construct HS2, such as excavators, cranes, bulldozers, concrete pumps, dumpers and loaders. These machines are used to excavate, lift, move and install materials or components as part of the construction process. Specialist training is needed to operate each type of machine.

If you have good hand-eye coordination and spatial awareness, as well as an enjoyment of working outside, then think about becoming a Construction Plant Operator.

Femi



Health and Safety Advisor

As Health and Safety Advisors we have an important role: to keep everyone on a construction site safe and to protect their health. We do this by researching risks, solving problems and using our communication skills to win hearts and minds. Examples of this include delivering training sessions on mental health issues and making sure workers have the personal protective equipment (PPE) they need. We also investigate accidents and analyse data to develop policies.

If you are a good problem-solver, want to make a difference and like helping others to keep safe, then Health & Safety might be a good career for you.

John



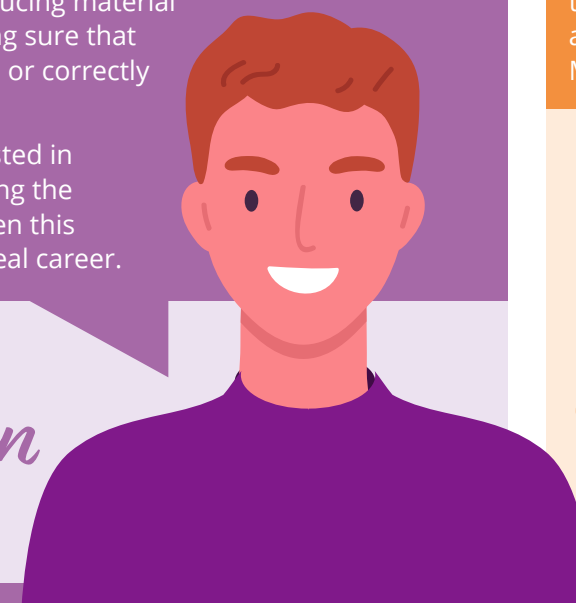
Environment Advisor

As Environment Advisors we work to minimise the environmental impact of construction, and work with site teams to make sure that the work complies with environmental regulations. This includes meeting specific targets for air quality, reducing noise pollution, preventing the contamination of soil and water, and making sure that the ecological and archaeological recommendations are carried out.

We also have a role in waste management. This involves reducing material waste and making sure that waste is recycled or correctly disposed of.

If you are interested in Science and saving the environment, then this could be your ideal career.

Jordan



Construction Site Manager

Construction Site Managers oversee the construction site. It is our job to supervise and organise the build, manage the construction teams, order materials, schedule construction work and record and report the progress of the build. We make sure that the build meets the engineer's specification and that work is carried out safely, sustainably, on time and within budget.

If you have leadership skills and like to make and build, then consider a career in Construction Site Management.

Nadia



Spaghetti Careers >>>>>

Careers paths are rarely linear. As your skills and interests develop, the path will grow and fork with unexpected opportunities and new directions. **Get ready for your first steps and be open to where your career path leads.**



Being an Apprentice

At HS2 we have many apprenticeship opportunities across many career areas. Find out about apprenticeship pathways into work:

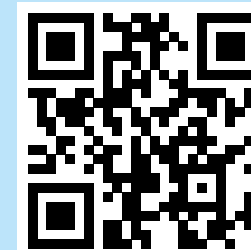
<https://www.hs2.org.uk/hs2-apprenticeship-journeys/>



Future You

Find out which HS2 career could be right for you:

<https://www.hs2.org.uk/future-you>



Join the Team

Find out about careers in the wider rail sector:

<https://routesintorail.org/>



Construction Careers at HS2

HS2



Play your part in our transformative journey.

Our Safe at Heart programme is embedded into our daily working lives to support and promote everyone's health, safety and wellbeing

<https://www.hs2.org.uk/building-hs2/phase-one-london-west-midlands/>



Office Careers at HS2

HS2

HS2 is a new, state-of-the-art, high-speed railway currently being built between London, Birmingham, Leeds and Manchester. HS2 Ltd is responsible for the design and build of the railway and operates at offices in Birmingham and London. **Let's meet the team that help to run our offices.**

Receptionist

As Receptionists we are the face of the company; welcoming visitors and staff at the front desk. It is our job to direct visitors, inform staff of visitor arrivals and help with any enquiries via phone and email.

If you are helpful, organised and have good communication skills, this could be the job for you.



Jay

Facilities Officer

As Facilities Officers we are responsible for the maintenance, safety and security of the HS2 offices. Day to day work involves general maintenance tasks and overseeing specialist contractors such as Cleaners, Window Cleaners, lift maintenance or Heating Engineers. Other tasks include moving furniture, setting up meeting rooms and organising refreshments, collecting parcels and organising fire evacuation procedures.

If you like manual work and are good at fixing things, then this could be your ideal role.

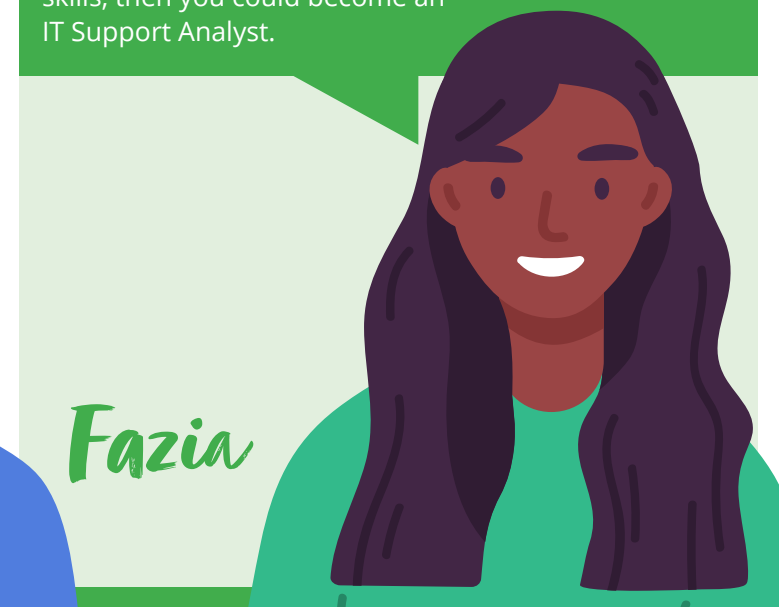


Guy

Information Technology (IT) Support Analyst

As IT Support Analysts we are the people responsible for running and maintaining the office IT and telecommunication systems and equipment, including the office networks, internet access, phones and computers. We also support office staff with advice and technical fixes for their IT problems via our service desk.

If you have excellent computing and IT skills, then you could become an IT Support Analyst.



Fazia

Office Administrator

Administrators oversee running the office and its administration, helping to make sure that everything works smoothly. Tasks include booking meeting rooms, managing the office budget, providing customer service and taking business enquiries. We are also in charge of document control, maintaining, storing and distributing project documents such as construction plans, blueprints, reports and budgets so that everyone has what they need.

If you have good organisation and teamwork skills, then you should consider being an Office Administrator.



Greta

Follow your skills >>>>>

Find a career that matches the skills that you like to use. **Speak to your Careers Advisor to find out where your skills could take you.**



Being an Apprentice

At HS2 we have many apprenticeship opportunities across many career areas. Find out about apprenticeship pathways into work:

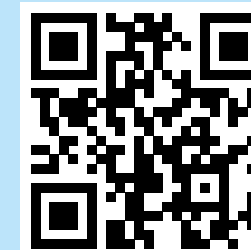
<https://www.hs2.org.uk/hs2-apprenticeship-journeys/>



Future You

Find out which HS2 career could be right for you:

<https://www.hs2.org.uk/future-you>



Join the Team

Find out about careers in the wider rail sector:

<https://routesintorail.org/>



Office Careers at HS2

HS2



Get your career moving in our direction.

We are positive, inclusive and proud to support our employees in reaching their personal and professional development aspirations.

<https://www.hs2.org.uk/careers/application-process/additional-support-and-information/>