

# Notice of road closure – Bockendon Rd, Kenilworth

March 2021 | [www.hs2.org.uk](http://www.hs2.org.uk)

High Speed Two (HS2) is the new high speed railway for Britain. Balfour Beatty VINCI (BBV) is working in partnership with HS2 Ltd to build the new high speed railway in your area.

## The work we will be doing

During March and April BBV will receive deliveries of stone to help in setting up the compound off Bockendon Road, Kenilworth.

In order to do this in safe and efficient manner we will need to temporarily close Bockendon Road, this is because the width of the road is unsafe to accommodate two-way traffic. Please note that the road will be closed between 9.30am and 3.30pm Monday to Fridays only.

There will be advanced warning signs placed on Bockendon Road and there will be a fully signed diversion in place during any temporary closures - please see map overleaf.

## When these works will take place

Works are scheduled to start on Tuesday 23 March through to Friday 30 April 2021. These works are subject to weather conditions.

## HS2 during the Coronavirus pandemic

We are continually reviewing the works on our construction sites in line with Government and Public Health England (PHE) advice on dealing with COVID-19. The Government's current COVID-19 strategy makes clear that construction activity can continue, as long as it complies with this guidance. The health and safety of our workforce and the communities we affect is our key priority. Please be assured that those sites that are currently still working are doing so because they can operate within PHE and construction industry guidelines.

**If you have a question about HS2 or our works, please contact our helpdesk on 08081 434 434 or email [HS2enquiries@hs2.org.uk](mailto:HS2enquiries@hs2.org.uk)**

## Notification



### Duration of works

- Works are scheduled to start from 23 March to 30 April 2021.
- Our working hours will be 9.30am until 3.30pm Monday to Friday.
- Our workforce can be on site one hour before and after to set up and take down our work equipment.

### What to expect

- Road closure on Bockendon Road in place from 9:30am – 3:30pm (when required).
- Short delays to journeys
- Our workforce to be on site 1 hour before and 1 hour after, to set up and take down equipment.

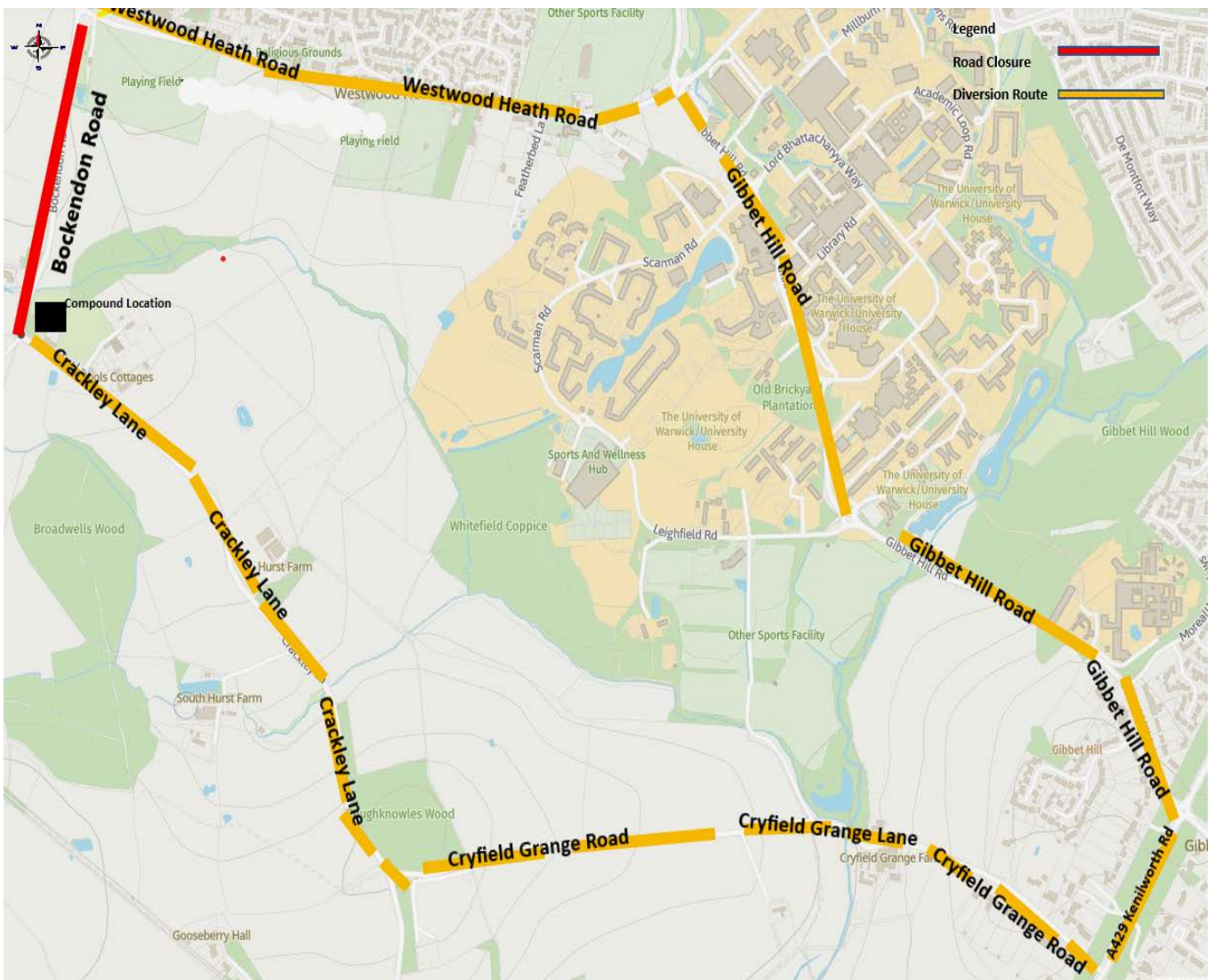
### What we will do

- Keep you up to date with any changes at [www.hs2inwarwickshire.co.uk](http://www.hs2inwarwickshire.co.uk)
- Keep all sites safe and secure.

# Notice of road closure – Bockendon Rd, Kenilworth

[www.hs2.org.uk](http://www.hs2.org.uk)

## Diversion map: Bockendon Road



# What else is happening in your area?

## Contact our HS2 Helpdesk team

Our team is here to listen and respond to your enquiry, complaint or feedback to help us be a good neighbour.

You can contact our Helpdesk team all day, every day of the year on:

Freephone: **08081 434 434**

Minicom: **08081 456 472**

Email: [hs2enquiries@hs2.org.uk](mailto:hs2enquiries@hs2.org.uk)



## Keep up-to-date with your local community website

To find out more about what's happening in your area and receive regular email updates, you can sign up to our local community websites at: [www.hs2inyourarea.co.uk](http://www.hs2inyourarea.co.uk).

## About our Community and Business Funds

We are offering two funds that are available to local communities and businesses between the West Midlands and London, to help with the disruption caused by our construction work. These are the Community and Environment Fund (CEF) and the Business and Local Economy Fund (BLEF).

The CEF is designed to give communities the opportunity to share in the benefits of HS2. It is an allocated fund that communities are able to apply for, to help to support local projects that aim to improve their local area.

The BLEF is designed to support local economies that may be disrupted by the construction of HS2. BLEF grants are for local business support organisations and local authorities to help maintain business activity in local communities.

For more information about each of these funds, including how to apply, please visit: <https://www.groundwork.org.uk/hs2funds>



# Keeping you informed

We are committed to keeping you informed about work on HS2. This includes ensuring you know what to expect and when to expect it, as well as how we can help.

## Residents' Charter and Commissioner

The Residents' Charter is our promise to communicate as clearly as we possibly can with people who live along or near the HS2 route.  
[www.gov.uk/government/publications/hs2-residents-charter](http://www.gov.uk/government/publications/hs2-residents-charter)

We also have an independent Residents' Commissioner whose job is to make sure we keep to the promises we make in the Charter and to keep it under constant review. Find reports at:  
[www.gov.uk/government/collections/hs2-ltd-residents-commissioner](http://www.gov.uk/government/collections/hs2-ltd-residents-commissioner)  
You can contact the Commissioner at:  
[residentscommissioner@hs2.org.uk](mailto:residentscommissioner@hs2.org.uk)

## Construction Commissioner

The Construction Commissioner's role is to mediate and monitor the way in which HS2 Ltd manages and responds to construction complaints. You can contact the Construction Commissioner by emailing:  
[complaints@hs2-cc.org.uk](mailto:complaints@hs2-cc.org.uk)

## Property and compensation

You can find out all about HS2 and properties along the line of route by visiting:  
[www.gov.uk/government/collections/hs2-property](http://www.gov.uk/government/collections/hs2-property)  
Find out if you're eligible for compensation at:  
[www.gov.uk/claim-compensation-if-affected-by-hs2](http://www.gov.uk/claim-compensation-if-affected-by-hs2)

## Holding us to account

If you are unhappy for any reason you can make a complaint via the helpline. For more details on our complaints process, please visit our website:  
[www.hs2.org.uk/how-to-complain](http://www.hs2.org.uk/how-to-complain)

## Contact Us

If you have any questions about this notification of works, please get in touch.

24/7 Freephone **08081 434 434**



Minicom **08081 456 472**



Email **[HS2enquiries@hs2.org.uk](mailto:HS2enquiries@hs2.org.uk)**



Write to:

**FREEPOST**

**HS2 Community Engagement**

Website **[www.hs2.org.uk](http://www.hs2.org.uk)**

To keep up to date with what is happening in your local area, visit:  
**[www.hs2.commonplace.warwickshire](http://www.hs2.commonplace.warwickshire)**

**Please contact us if you'd like a free copy of this document in large print, Braille, audio or easy read. You can also contact us for help and information in a different language.**

HS2 Ltd is committed to protecting personal information. If you wish to know more about how we use your personal information please see our Privacy Notice  
<https://www.gov.uk/government/publications/high-speed-two-ltd-privacy-notice>

Reference Number – HS2-MW-BBV-Ph1-Ar-No-N1-Traf-50-03/10/2021  
High Speed Two (HS2) Limited, registered in England and Wales.  
Registered office: Two Snowhill, Snow Hill Queensway, Birmingham B4 6GA.  
Company registration number: 06791686. VAT registration number: 181 4312 30.

24/7 Community Freephone Helpline **08081 434 434**