



Works update for Chalfont St Giles vent shaft site

March 2021 | www.hs2.org.uk

High Speed Two (HS2) is the new high speed railway for Britain. We are continually reviewing the works on our construction sites in line with Government and Public Health England (PHE) advice on dealing with COVID-19. The Government's current strategy makes it clear that construction activity can continue as long as it complies with this guidance.

Please be assured that only sites that can operate within the guidelines are operational. All sites will remain under constant review. We have postponed all face-to-face engagement events and meetings and have put in place a number of channels to communicate with communities, such as letters and phone calls, as well as updates and alerts from each of the local community websites. You can sign up for regular updates in your local area at www.hs2inbucksandbox.co.uk

What work will be taking place?

Works to prepare for and the start of diaphragm walling (D-walling) at the vent shaft site at Chalfont St Giles will start in March. The vent shaft is an important structure for the railway because it will provide ventilation for the Chiltern Tunnel under Chalfont St Giles. In March we will take the first steps in its construction.

The vent shaft walls are being built using a technique called diaphragm walling. This is a continuous wall, made up of 16 panels, which will be built to create the shaft. Each panel is constructed using a narrow trench dug into the ground, which is supported by engineering fluid while we remove the spoil and is finally replaced by reinforced concrete. The construction process for the vent shaft is illustrated on page 2. D-wall construction is expected to take several months and will be one of the busiest periods of our work at this site. During this time, we will need to extend our working hours to complete key activities, such as the concrete pours. The pours themselves last around 12 hours and are generally done overnight, after which we normally go back to normal working hours until the next one.

If you have a question about HS2 or our works, please contact our HS2 Helpdesk team on 08081 434 434 or email hs2enquiries@hs2.org.uk

Duration of works

March to July 2021

What to expect

Working hours Monday to Friday 8am to 6pm and Saturday 8am to 1pm. We will be on site for one hours start and shut down outside of those times.

For each concrete pour will need to work over night. We may also need to work extended hours at other times during construction

What we will do

We will be working hard to ensure any impacts on residents are kept to a minimum during these works

Update on works at Chalfont St Giles

Notification



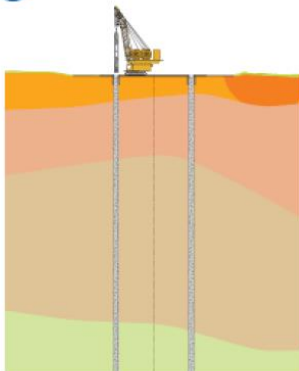
www.hs2.org.uk

D-walling

Picture 1 shows the D-wall process. Shaft excavation will start once this has been completed later on in late summer.

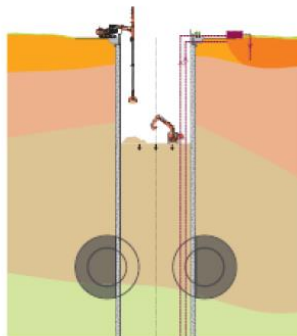
Vent shaft excavation process

1 Outer wall construction



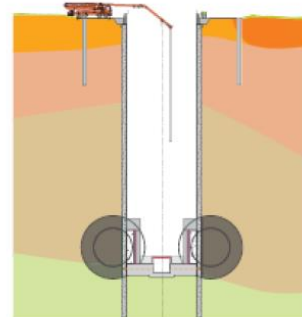
The outer walls of the vent shaft are created using Diaphragm Walls (or 'D'-Walls). These are constructed from the ground level (top-down). This protects the excavation work from lateral earth pressure and water pressure. These walls will form the external structure of the finished vent shaft.

2 Shaft excavation



The ground around the tunnel entry points is prepared for the arrival of the Tunnel Boring Machines (TBMs). Earth is removed from within the walls with excavators. Groundwater in the shaft is pumped out to local recharge wells.

3 Secant pile, base slab, and collar construction



The outer walls of the headhouse are constructed using a technique called secant piling. When the earth from within the shaft walls has been excavated, concrete is poured into the shaft to create the base slab. A structure called a collar is constructed to support the shaft when the TBMs arrive and pass through.

How will this impact local residents?

We will do all we can to keep residents informed of the dates of concrete pours and where we will be working outside our core hours of 8am to 6pm Monday to Friday and 8am to 1pm on Saturday.

As we have said D-walling is one of the busiest periods of the construction of the vent shaft. During this time, we will need to extend our working hours to complete key activities, such as the concrete pours. There may also be times where for engineering reasons we will need to work longer hours.

Update on works at Chalfont St Giles

Notification



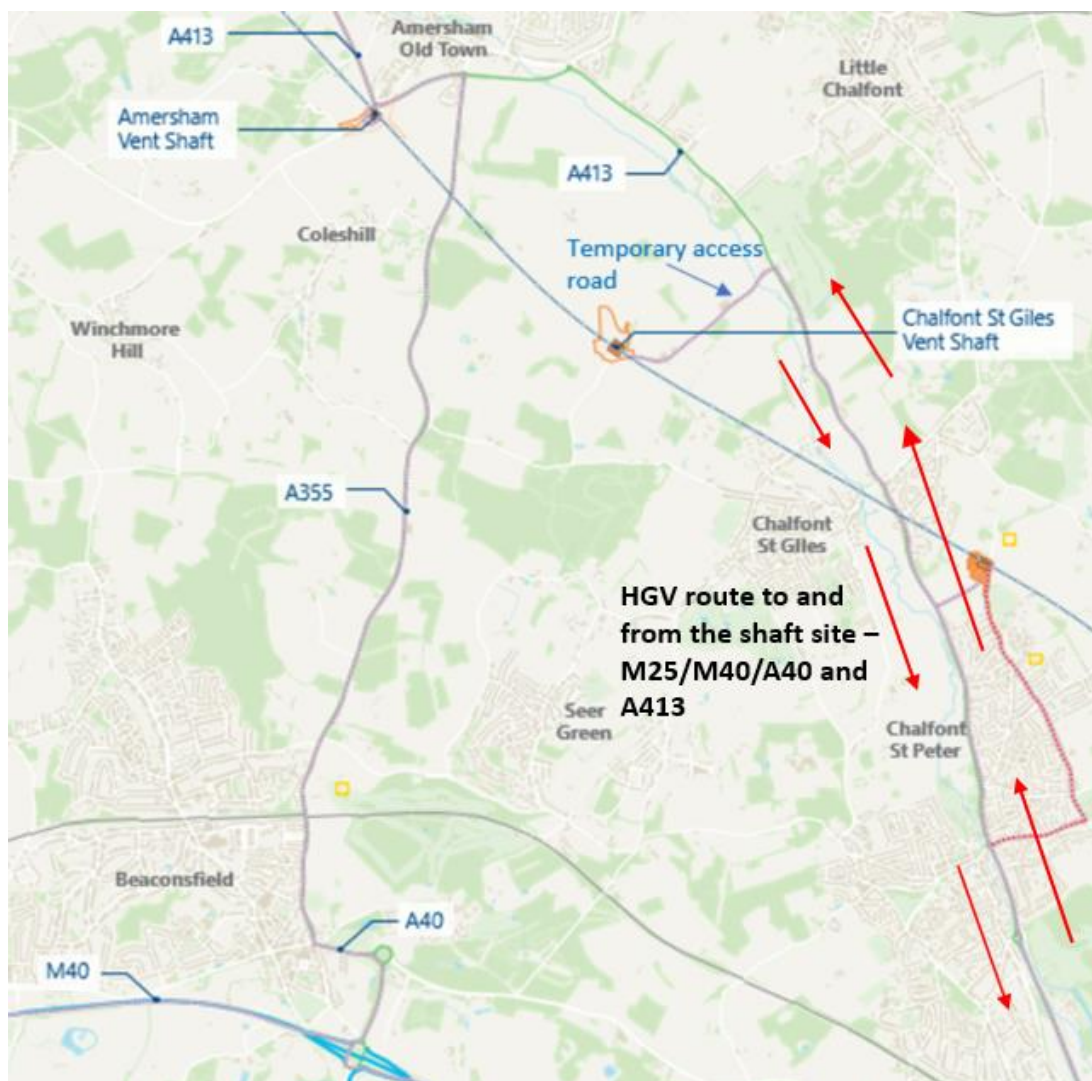
www.hs2.org.uk

Where are your HGVs coming from?

Our routes for HGVs to the Chalfont St Giles vent shaft site is from the south via the M25/M40/A40 and A413 and onto site via the temporary access road. On leaving the site they will turn right and head back along the A413/A40/M40 and M25. HS2 HGVs need to display an HS2 sign in their window.

If residents believe an HS2 HGV is using other roads in the area, they need to contact HS2 Enquiries, details on the last page of this notice, with the date, time and registration number of the vehicle. If they can obtain the name of the haulier that will also help.

Location of the vent shaft site and HGV route



Contact our HS2 Helpdesk team on **08081 434 434**

Keeping you informed

We are committed to keeping you informed about work on HS2. This includes ensuring you know what to expect and when to expect it, as well as how we can help.

Residents' Charter and Commissioner

The Residents' Charter is our promise to communicate as clearly as we possibly can with people who live along or near the HS2 route.

www.gov.uk/government/publications/hs2-residents-charter

We also have an independent Residents' Commissioner whose job is to make sure we keep to the promises we make in the Charter and to keep it under constant review. Find reports at:

www.gov.uk/government/collections/hs2-ltd-residents-commissioner

You can contact the Commissioner at:
residentscommissioner@hs2.org.uk

Construction Commissioner

The Construction Commissioner's role is to mediate and monitor the way in which HS2 Ltd manages and responds to construction complaints. You can contact the Construction Commissioner by emailing:
complaints@hs2-cc.org.uk

Property and compensation

You can find out all about HS2 and properties along the line of route by visiting:

www.gov.uk/government/collections/hs2-property

Find out if you're eligible for compensation at:

www.gov.uk/claim-compensation-if-affected-by-hs2

Holding us to account


If you are unhappy for any reason you can make a complaint by contacting our HS2 Helpdesk team. For more details on our complaints process, please visit our website:

www.hs2.org.uk/how-to-complain

Contact Us

Contact our HS2 Helpdesk team all day, every day of the year on:

 Freephone **08081 434 434**

 Minicom **08081 456 472**

 Email **hs2enquiries@hs2.org.uk**

Write to:

FREEPOST

HS2 Community Engagement

Website **www.hs2.org.uk**

To keep up to date with what is happening in your local area, visit:
www.hs2inbucksandbox.co.uk

Please contact us if you'd like a free copy of this document in large print, Braille, audio or easy read. You can also contact us for help and information in a different language.

HS2 Ltd is committed to protecting personal information. If you wish to know more about how we use your personal information please see our Privacy Notice
<https://www.gov.uk/government/publications/high-speed-two-ltd-privacy-notice>

Reference number: HS2-EW-Align-Ph1-Ar-Ce-C1-CR-27-26/02/2021

High Speed Two (HS2) Limited, registered in England and Wales.

Registered office: Two Snowhill, Snow Hill Queensway, Birmingham B4 6GA.

Company registration number: 06791686. VAT registration number: 888 8512 56.